

Product datasheet for **RG230727**

KIF21A (NM_001173463) Human Tagged ORF Clone

Product data:

Product Type:	Expression Plasmids
Product Name:	KIF21A (NM_001173463) Human Tagged ORF Clone
Tag:	TurboGFP
Symbol:	KIF21A
Synonyms:	CFEOM1; FEOM1; FEOM3A
Mammalian Cell Selection:	Neomycin
Vector:	pCMV6-AC-GFP (PS100010)
E. coli Selection:	Ampicillin (100 ug/mL)
ORF Nucleotide Sequence:	>RG230727 representing NM_001173463 Red=Cloning site Blue=ORF Green=Tags(s)

TTTTGTAATACGACTCACTATAGGGCGGCCGGAATTCGTCGACTGGATCCGGTACCGAGGAGATCTGCC
GCC**CGATCGCC**

ATGTTGGGCGCCCGGACGAGAGCTCCGTGCGGGTGGCTGTCAGAATAAGACCACAGCTTGCCAAAGAGA
AGATTGAAGGATGCCATATTTGTACATCTGTCACACCAGGAGAGCCTCAGGTCTTCTAGGGAAAGATAA
GGCTTTTACTTTGACTATGATTTGACATTGACTCCCAGCAAGAGCAGATCTACATTCAATGTATAGAA
AACTAATTGAAGTTGCTTTGAAGGATACAATGCTACAGTTTTGCTTATGGACAACTGGAGCTGGTA
AAACATACACAATGGGAACAGGATTTGATGTTAACATTGTTGAGGAAGAACTGGGTATTATTTCTCGAGC
TGTTAAACACCTTTTAAAGTATTGAAGAAAAAACACATAGCAATTAATAATGGGCTTCTGCTCCA
GATTTTAAAGTGAATGCCAATCTTAGAGCTCTATAATGAAGAGGTCCTTGACTTATTTGATACCACTC
GTGATATTGATGCAAAAAGTAAAAATCAATATAAGAATTCATGAAGATTCAACTGGAGGAATTTATAC
TGTGGGCGTTACAACACGTAAGTGAATACAGAATCAGAGATGATGCAGTGTTTGAAGTTGGGTGCTTTA
TCCCGGACAACTGCCAGTACCCAGATGAATGTTTCAGAGCTCTCGTTCACATGCCATTTTACCATTGATG
TGTGTCAAACAGAGTGTGTCCTCAATAGATGCTGACAATGCAACTGATAATAAATTTTCTGAATC
AGCACAGATGAATGAATTTGAAACCTGACTGCAAAGTCCATTTTGTGATCTCGCAGGATCTGAAAGA
CTGAAGCGTACTGGAGCTACAGGCGAGAGGGCAAAGAAGGCATTTCTATCAACTGTGGACTTTTGGCAC
TTGGCAATGTAATAAGTGCCTTGGGAGACAAGAGCAAGAGGGCCACACATGTCCCCTATAGAGATTCCAA
GCTAACAAAGACTACTACAGGATTCCTCGGGGTAAAGCCAAACAATCATGATAGCATGTGTCAGCCCT
TCAGACAGAGACTTTATGGAAACGTTAAACACCCTGAAATACGCCAATCGAGCTAGAAAATCAAGAATA
AGGTGATGGTCAATCAGGACAGAGCTAGTCAGCAATCAATGCACTTCGTAGTGAATCACACGACTTCA
GATGGAGCTCATGGAGTACAAAACAGGTAAAAGAATAATTGACGAAGAGGGTGTGGAAAGCATCAATGAC
ATGTTTCATGAGAATGCTATGCTACAGACTGAAAATAATAACCTGCGTGAAGAATTAAGCCATGCAAG
AGACGGTTGATGATTGAGGTCCAGAATTACACAGCTTGTAGTGATCAGGCCAACCATGTTCTTGCCAG
AGCAGGTGAAGGAAATGAGGAGATTAGTAATATGATTCATAGTTATATAAAGAAATCGAAGATCTCAGG



[View online »](#)

GCAAAATTATTAGAAAAGTGAAGCAGTGAATGAGAACCTTCGAAAAAAGCTTGACAAGGCCACAGCAAGAG
CGCCATATTTTCAGCGGATCATCACTTTTTCTCTACCATACTATCCTCAGACAAAGAAACCATTGAAAT
TATAGACCTAGCAAAAAAGATTTAGAGAAGTTGAAAAGAAAAGAAAAGAGGAAGAAAAAGTGTGGCT
GGTAAAGAGGATAATACAGACACTGACCAAGAGAAGAAAAGAAAAGGGTGTTCGGAAAGAGAAAAACA
ATGAATTAGAAGTGAAGAAAAGTCAAGAAGTGAAGTATCATGAGGATGAAGAAGAGGAGGAGGAGGGA
GGAAGATGACATTGATGGGGTAAAAGTCTGATGAATCAGATTCTGAATCAGATGAAAAAGCCAATTAT
CAAGCAGACTTGGCAAACATTACTTGTGAAATTGCAATTAAAGCAAAGCTGATTGATGAACTAAAAACA
GCCAGAAAAGACTGCAGACTCTGAAAAAGCAGTATGAAGAGAAGCTAATGATGCTGCAACATAAAAATTCG
GGATACTCAGCTTGAAAGAGACCAGGTGCTTCAAACCTTAGGCTCGGTAGAATCTTACTCAGAAGAAAA
GCAAAAAAGTTAGTCTGAATATGAAAAGAACTCCAAGCCATGAACAAAGAACTGCAGAGACTTCAAG
CAGCTCAAAAAGAACATGCAAGGTTGCTTAAAAATCAGTCTCAGTATGAAAAGCAATTGAAGAAATTGCA
GCAGGATGTGATGAAAATGAAAAAACAAAGGTTGCTTAAATGAAACAAATGAAAGAAGAACAAGAGAAA
GCCAGACTGACTGAGTCTAGAAGAACAGAGAGATTGCTCAGTTGAAAAGGATCAACGTAAAAGAGATC
ATCAACTTAGACTTCTGGAAGCCAAAAAAGAAACCAAGAAGTGGTTCTACGTCGCAAACTGAAGAGGT
TACGGCTCTTCGTCGGCAAGTAAAGCCCATGTCAGATAAAGTGGCTGGGAAAGTTACTCGGAAGCTGAGT
TCATCTGATGCACCTGCTCAGGACACAGGTTCCAGTGCAGCTGCTGTCGAAACAGATGCATCAAGGACAG
GAGCCCAGCAGAAAATGAGAATTCCTGTGGCGAGAGTCCAGGCCTTACCAACGCCGGCAACAAATGGAAA
CAGGAAAAAATATCAGAGGAAAGGATTGACTGGCCGAGTGTATTTTCCAAGACAGCTCGCATGAAGTGG
CAGCTCCTTGAGCGCAGGGTACAGACATCATATGCAGAAGATGACCAATTTCCAACATGGAGGCAGATA
TGAATAGACTCCTCAAGCAACGGGAGGAACTCACAAAAAGACGAGAGAACTTTCAAAAAGAAAGGGAGAA
GATAGTCAAGGAGAATGGAGAGGGAGATAAAAAATGTGGCTAATATCAATGAAGAGATGGAGTCACTGACT
GCTAATATCGATTACATCAATGACAGTATTTCTGATTGTCAGGCCAACATAATGCAGATGGAAGAAGCAA
AGGAAGAAGGTGAGACATTGGATGTTACTGCAGTCAATAATGCCTGACCCCTTACAGAAGCCCGATACCT
GCTAGATCACTTCTGTCAATGGGCATCAATAAGGGTCTTCAGGCTGCCAGAAAAGAGGCTCAAAATTA
GTACTGGAAGGTCGACTCAAACAAACAGAAATAACCAAGTCTACCCAAAACAGCTCTTATTCCATATGT
TGAAAGAGAAGGCAGAATTAATCCTGAGCTAGATGCTTTACTAGGCCATGCTTTACAAGAAAATGTAGA
GGATAGTACTGATGAGGATGCTCCTTTAAACAGCCAGGATCAGAAGGAAGCAGCTGTCTTCAGATCTC
ATGAAGCTTTGTGGTGAAGTGAACCTAAGAACAAGGCCCGAAGGAGAACCACCACTCAGATGGAATTGC
TGTATGCAGATAGCAGTGAAGTACTGCTTCCAGACACTAGTACAGGAGATGCCTCCTTGCTGGCCCTCTCAC
ACCTGTTGCAGAAGGGCAAGAGATTGGAATGAATACAGAGACAAGTGGTACTTCTGCTAGGAAAAAGAG
CTCTCTCCCCACCTGGCTTACCTTCTAAGATAGGCAGCATTTCAGGCAGTCACTCTATCAGAAAAAA
AAATTCAGAGCCTTCTCCTGTAACAAGGAGAAAGGCATATGAGAAAGCAGAAAAATCAAAGGCCAAGGA
ACAAAAGCACTCAGATTCTGGAACCTCAGAGGCTAGTCTTTCACCTCCTTCTTCCCACCAAGCCGCCCC
CGTAATGAACTGAATGTTTTAATCGTCTTACTGTTTCTCAGGGAAACACATCAGTTCAGCAGGATAAGG
GCATAATCAACCCATTTCTGCTTCAAAGGAATCAGAGCTTTTCCACTTCAGTGTATTCACATAGCTGA
AGGGCATACAAAAGCTGTGCTCTGTGTGGATTCTACTGATGATCTCCTTCTCACTGGATCAAAAGATCGT
ACTTGTAAAGTATGGAATCTGGTACTGGGCAGGAAATAATGTCAGTGGGGGTCATCCCAACAATGTGC
TGCTGTAAAAACTGTAATTATACCAGTTTGGTCTTCACTGTATCAACATCTTATTAAGGTGTGGGA
TATCAGAGATTACGCAAAAGTGCATTCGAACACTAACGTCTCAGGTCAAGTACTCTTGGAGATGCTTGT
TCTGCAAGTACCAGTCGAACAGTAGCTATTCCTTCTGGAGAGAACCAGATCAATCAAATGCCCTAAACC
CAACTGGCACCTTCTCTATGCTGCTTCTGAAAATGCTGTCAGGATGTGGATCTTAAAAGTTCAGTC
TACAGGAAAGTTAACAGGACACCTAGGCCTGTTATGTGCCTTACTGTGGATCAGATTTCCAGTGGACAA
GATCTAATCATCACTGGCTCCAAGGATCATTACATCAAAATGTTTGTGTTACAGAAGGAGCTCTTGGGA
CTGTGAGTCCCACCCACAATTTTGAACCCCTCATTATGATGGCATAGAAGCACTAACCAATCAAGGGGA
TAACCTATTTAGTGGTCTAGAGATAATGGAATCAAGAAATGGGACTTAACTCAAAAAGACCTTCTTCAG
CAAGTTCAAATGCACATAAGGATTGGGTCTGTGCCCTGGGAGTGGTCCAGACCACCCAGTTTGTCTCA
GTGGCTGCAGAGGGGGCATTGTAAGTCTGGAACATGGATACTTTTATGCCAGTGGGAGAGATGAAGGG
TCATGATAGTCTATCAATGCCATATGTGTTAATTCACCCACATTTTACTGCAGCTGATGATCGAACT
GTGAGAATTTGGAAGGCTCGCAATTTGCAAGATGGTCAGATCTCTGACACAGGAGATCTGGGGGAAGATA
TTGCCAGTAAT

ACGCGTACGCGGCCGCTCGAG - GFP Tag - GTTTAA

Protein Sequence: >RG230727 representing NM_001173463
 Red=Cloning site Green=Tags(s)

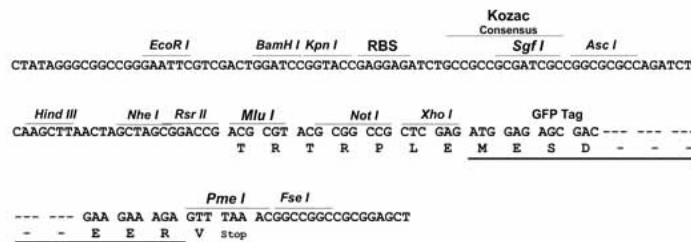
MLGAPDESSVRVAVRIRPQLAKEKIEGCHICTSVTPGEPQVFLGKDKAFTDYVFDIDSQQEQIYIQCIE
 KLIEGCFEGYNATVFAYGQTGAGKTYTMGTGFDVNIVEEELGII SRAVKHLFKSIEEKKHIAIKNGLPAP
 DFKVNAQFLELYNEEVLDFDTRRIDAKSKKSNIRIHEDSTGGIYTVGVTRTRVNTSEMMQCLKLGAL
 SRTTASTQMNVQSSRSHAIFTIIVCQTRVCPQIDADNATDNKII SESAQMNEFETLTAKFHFDLAGSER
 LKRTGATGERAKEGISINCGLLALGNVISALGDKSKRATHVPYRDSKLTRLLQDSLGGNSQTIMIACVSP
 SDRDFMETLNTLKYANRARNIKNKVMVNQDRASQQINALRSEITRLQMELMYKTKRIIDEEGVESIND
 MFHENAMLQTENNLRVRIKAMQETVDALRSRITQLVSDQANHLARAGEGNEEISNMIHSYIKEIEDLR
 AKLLESEAVNENLRKNL TRATARAPYFGSSTFSPTILSSDKETIEIIDLAKKDLEKLRKEKRKKKSV
 GKEDNTDQEKKEEKGVSERENNELEVEESQEVSDHEDEEEEEEEEDDIDGGESSDESSEDEKANY
 QADLANITCEIAIKQKL IDELENSQKRLQTLKKQYEEKLMLLQHKIRDTQLERDQVLQNLGSVESYSEEK
 AKKVRSEYEKQLQAMNKELQRLQAAQKEHARLLKNQSQYEKQLKKLQDDVMMKTKVRLMKQMKEEQEK
 ARLTESRRNREIAQLKKDQRKRDLRLLEAQKRNVQEVVLRKTEEVTALRRQVRPMSDKVAGKVTRKLS
 SSDAPAQDTGSSAAAVETDASRTGAQQMRIPVARVQALPTPATNGNRKKYQRKGLTGRVFSKTRMKW
 QLLERRVTDIIMQKMTISNMEADMNRLKQREELTKRREKLSKRREKIVKENGEGDKNVANINEEMESLT
 ANIDYINDSISDCQANIMQMEEAKEEGETLDVTAVINACTL TEARYLLDHFLSMGINKGLQAAQKEAQIK
 VLEGRKQTEITSATQNQLLFHMLKEKAELNPELDALLGHALQENVEDSTDEDAPLNSPQSGESTLSSDL
 MKLCGEVVKPKNKARRRTTQMELLYADSSSELASDTSTGDASLPGPLTPVAEGQEIGMNTETSGTSAREKE
 LSPPPGLPSKIGSISRQSSLSEKKIPEPSPVTRRKAYEKAESKAKEQKHSDSGTSEASLSPSSPPSRP
 RNELNVFNRLTVSQGNTSVQDQKGIINPFPASKGIRAFPLQCIHIAEGHTKAVLCVDSTDDLFTGSKDR
 TCKVWNLVTGQEIMSLGGHPNNVSVKYCNYTSLVFTVSTSYIKVWDIRDSAKCIRTLTSSGQVTLGDAC
 SASTSRTVAIPSGENQINQIALNPTGTFLYAASGNVAVRMDLKRQSTGKLTGHLGPMVCLTVDQISSGQ
 DLIITGSKDHYIKMFDVTEGALGTVSPTHNFEPHYDGEALTIQGDNLFSGSRDNGIKKDWLTQKDLLQ
 QVPSNAHKDWCALGVVPDHPVLLSGCRGGILKVVNMDTFMPVGMKGHDSPINAICVNSTHIFTAADDRT
 VRIWKARNLQDGGISDTGDLGEDIASN

TRTRPLE - GFP Tag - V

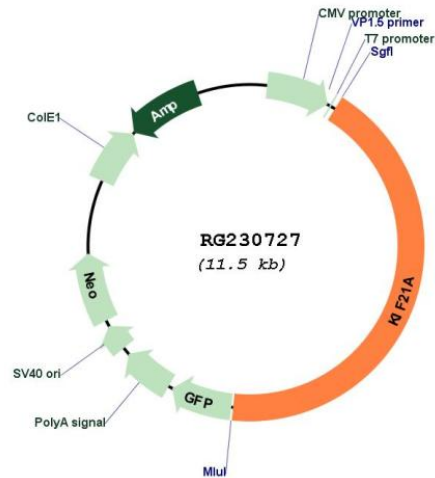
Restriction Sites: SgfI-MluI

Cloning Scheme:

Cloning sites used for ORF Shutting:



Plasmid Map:



ACCN: NM_001173463

ORF Size: 4911 bp

OTI Disclaimer: The molecular sequence of this clone aligns with the gene accession number as a point of reference only. However, individual transcript sequences of the same gene can differ through naturally occurring variations (e.g. polymorphisms), each with its own valid existence. This clone is substantially in agreement with the reference, but a complete review of all prevailing variants is recommended prior to use. [More info](#)

OTI Annotation: This clone was engineered to express the complete ORF with an expression tag. Expression varies depending on the nature of the gene.

Components: The ORF clone is ion-exchange column purified and shipped in a 2D barcoded Matrix tube containing 10ug of transfection-ready, dried plasmid DNA (reconstitute with 100 ul of water).

Reconstitution Method:

1. Centrifuge at 5,000xg for 5min.
2. Carefully open the tube and add 100ul of sterile water to dissolve the DNA.
3. Close the tube and incubate for 10 minutes at room temperature.
4. Briefly vortex the tube and then do a quick spin (less than 5000xg) to concentrate the liquid at the bottom.
5. Store the suspended plasmid at -20°C. The DNA is stable for at least one year from date of shipping when stored at -20°C.

RefSeq: [NM_001173463.2](#)

RefSeq Size: 6542 bp

RefSeq ORF: 4914 bp

Locus ID: 55605

UniProt ID: [Q7Z4S6](#)

Cytogenetics: 12q12

Protein Families: Druggable Genome

Gene Summary: This gene encodes a member of the KIF4 subfamily of kinesin-like motor proteins. The encoded protein is characterized by an N-terminal motor domain a coiled-coil stalk domain and a C-terminal WD-40 repeat domain. This protein may be involved in microtubule dependent transport. Mutations in this gene are the cause of congenital fibrosis of extraocular muscles-1. Alternate splicing results in multiple transcript variants.[provided by RefSeq, Mar 2010]