

## Product datasheet for **RG230715**

### **SRC3 (NCOA3) (NM\_001174087) Human Tagged ORF Clone**

#### Product data:

Product Type:	Expression Plasmids
Product Name:	SRC3 (NCOA3) (NM_001174087) Human Tagged ORF Clone
Tag:	TurboGFP
Symbol:	NCOA3
Synonyms:	ACTR; AIB-1; AIB1; bHLHe42; CAGH16; CTG26; KAT13B; pCIP; RAC3; SRC-3; SRC3; TNRC14; TNRC16; TRAM-1
Mammalian Cell Selection:	Neomycin
Vector:	pCMV6-AC-GFP (PS100010)
E. coli Selection:	Ampicillin (100 ug/mL)
ORF Nucleotide Sequence:	>RG230715 representing NM_001174087 Red=Cloning site Blue=ORF Green=Tags(s)

TTTTGTAATACGACTCACTATAGGGCGGCCGGAATTCGTCGACTGGATCCGGTACCGAGGAGATCTGCC  
GCC**GCGATCGCC**

ATGAGTGGATTAGGAGAAAACCTGGATCCACTGGCCAGTGATTACGAAAACGCAAATTGCCATGTGATA  
CTCCAGGACAAGGTCTTACCTGCAGTGGTAAAAACGGAGACGGGAGCAGGAAAGTAAATATATTGAAGA  
ATTGGCTGAGCTGATATCTGCCAATCTTAGTGATATTGACAATTTCAATGTCAAACCAGATAAATGTGCG  
ATTTTAAAGGAAACAGTAAGACAGATACGTCAAATAAAAGAGCAAGGAAAAACTATTTCCAATGATGATG  
ATGTTCAAAAAGCCGATGTATCTTCTACAGGGCAGGGAGTTATTGATAAAGACTCCTTAGGACCGCTTTT  
ACTTCAGGCATTGGATGGTTTCTATTTTGGTGAATCGAGACGGAAACATTGTATTGTATCAGAAAAAT  
GTCACACAATACCTGCAATATAAGCAAGAGGACCTGGTTAACACAAGTGTTCACAATATCTTACATGAAG  
AAGACAGAAAGGATTTTCTTAAGAATTTACCAAAATCTACAGTTAATGGAGTTTCTCGGACAAATGAGAC  
CCAAAGACAAAAAGCCATACATTTAATTGCCGTATGTTGATGAAAACACCACATGATATTTCTGGAAGAC  
ATAAACGCCAGTCCTGAAATGCGCCAGAGATATGAAACAATGCAGTGCTTTGCCCTGTCTCAGCCACGAG  
CTATGATGGAGGAAGGGGAAGATTTGCAATCTTGTATGATCTGTGTGGCAGCCGATTACTACAGGAGA  
AAGAACATTTCCATCAAACCTGAGAGCTTTATTACCAGACATGATCTTTCAGGAAAGGTTGTCAATATA  
GATACAAATCACTGAGATCCTCCATGAGGCCTGGCTTTGAAGATATAATCCGAAGGTGATTTCAGAGAT  
TTTTTAGTCTAAATGATGGGCAGTCATGGTCCCAGAAACGTCACATCAAGAAGCTTATCTTAATGGCCA  
TGCAGAAACCCAGTATATCGATTCTCGTTGGCTGATGGAACATAGTGACTGCACAGACAAAAAGCAAA  
CTCTCCGAAATCCTGTAACAAAATGATCGACATGGCTTTGTCTCAACCCACTTCTTCAGAGAGAACAGA  
ATGGATATAGACCAAACCAATCCTGTTGGACAAGGGATTAGACCACCTATGGCTGGATGCAACAGTTC  
GGTAGGCGGCATGAGTATGTCGCCAAACCAAGGCTTACAGATGCCGAGCAGCAGGGCCTATGGCTTGCA  
GACCCTAGCACACAGGGCAGATGAGTGGAGCTAGGTATGGGGTTCCAGTAACATAGCTTCATTGACCC  
CTGGGCCAGGCATGCAATCACCATCTTCTACCAGAACAACAATATGGGCTCAACATGAGTAGCCCCC



ACATGGGAGTCTGGTCTTGCCCCAAACCAGCAGAATATCATGATTTCTCCTCGTAATCGTGGGAGTCCA  
AAGATAGCCTCACATCAGTTTTCTCCTGTTGCAGGTGTGCACTCTCCCATGGCATCTTCTGGCAACTG  
GGAACCACAGCTTTTCCAGCAGCTCTCTCAGTGCCTGCAAGCCATCAGTGAAGGTGTGGGGACTTCCCT  
TTTATCTACTCTGTATCACCAGGCCCAAATTGGATAACTCTCCAATATGAATATTACCAACCAAGT  
AAAGTAAGCAATCAGGATTCCAAGATCCTCTGGGCTTTATTGCGACCAAAATCCAGTGGAGAGTTCAA  
TGTGTCACTCAAATAGCAGAGATCACCTCAGTGACAAAGAAAGTAAGGAGAGCAGTGTGGAGGGCCAGA  
GAATCAAAGGGTCTTTGGAAAGCAAAGTCAAAAAATTACTGCAGTTACTTACCTGTTCTTCTGTGAT  
GACCGGGTCAATCCTCCTTGACCAACTCCCCCTAGATTCAAGTTGTAAGAATCTTCTGTTAGTGCA  
CCAGCCCCCTGGAGTCTCCTCCTACATCTGGAGGAGTATCCTCTACATCCAATATGCATGGGCTCACT  
GTTACAAGAGAAGCACCGGATTTTGACAAGTTGCTGCAGAATGGGAATTCACCAGCTGAGGTAGCCAAG  
ATTACTGCAGAAGCCACTGGGAAAGACACCAGCAGTATAACTTCTTGTGGGGACGGAAATGTTGTCAAGC  
AGGAGCAGCTAAGTCTAAGAAGAAGGAGAATAATGCACCTTCTTAGATACCTGCTGGACAGGGATGATCC  
TAGTGATGCACCTCTAAGAACTACAGCCCCAAGTGAAGGAGTGGATAATAAAATGAGTCAGTGCACC  
AGCTCCACCATTCTAGCTCAAGTCAAGAGAAAGACCCTAAAATTAAGACAGAGACAAGTGAAGAGGGAT  
CTGGAGACTTGGATAATCTAGATGCTATTCTTGGTGATCTGACTAGTTCTGACTTTTACAATAATCCAT  
ATCCTCAAATGGTAGTCATCTGGGGACTAAGCAACAGGTGTTCAAGGAATAATCTCTGGGTTTGAAA  
AGTTCACAGTCTGTGCAGTCTATTCTGCTCCATATAACCGAGCAGTGTCTCTGGATAGCCCTGTTTCTG  
TTGGCTCAAGTCTCCAGTAAAAATATCAGTGTCTTCCCATGTTACCAAAGCAACCCATGTTGGGTGG  
GAATCCAAGAAATGATGGATAGTCAGGAAAATATGGCTCAAGTATGGGTGGGCCAAACCGAAATGTGACT  
GTGACTCAGACTCCTTCTCAGGAGACTGGGGCTTACCAAATCAAAGGCCGGCAGAATGGAACCTATGA  
ATTCAACTCCATGGGAAGACCAGGAGGAGATTATAACTTCTTACCCAGACCTGCACTGGGTGGCTC  
TATTCACATTCCTCTCGGTCTAATAGCATACCAGGTGCGAGACCAGTATTGCAACAGCAGCAGCAG  
ATGCTTCAAATGAGGCCGTGGTGAATCCCATGGGAATGGGGCTAATCCCTATGGCCAAGCAGCAGCAT  
CTAACCAACTGGGTTCTGGCCCGATGGCATGTTGTCCATGGAACAAGTTTCTCATGGCACTCAAATAG  
GCCTCTTCTTAGGAATCCCTGGATGATCTTGTGGGCCACCTTCCAACCTGGAAGGCCAGAGTGACGAA  
AGAGCATTATTGGACCAGCTGCACACTTCTCAGCAACACAGATGCCACAGGCTGGAAGAAATGACA  
GAGCTTTGGCATTCTGAACTTGTCAATCAGGGACAGGCATTAGAGCCCAAACAGGATGCTTTCCAAGG  
CCAAGAAGCAGCAGTAATGATGGATCAGAAGGCAGGATTATATGGACAGACATACCAGCACAGGGGCT  
CCAATGCAAGGAGGCTTTCATCTCAGGGACAATCACCATCTTTAACTCTATGATGAATCAGATGAACC  
AGCAAGGCAATTTCTCTCCAAGGAATGCACCCACGAGCCAACATCATGAGACCCCGACAACACCCC  
CAAGCAACTTAGAATGCAGCTTACAGCAGAGGCTGCAGGGCCAGCAGTTTTTGAATCAGAGCCGACAGGCA  
CTTGAATTGAAAATGGAAAACCCACTGCTGGTGGTGCTGCGGTGATGAGGCCTATGATGCAGCCCGAGG  
TGAGCTCCAGGGTTTTCTAATGCTCAAATGGTCCGCCAACGCAGCAGAGAGCTGCTAAGTCATCACTT  
CCGACAACAGAGGGTGGCTATGATGATGCAGCAGCAGCAGCAGCAACAGCAGCAGCAGCAGCAGCAG  
CAGCAGCAACAGCAACAGCAACAGCAACAGCAGCAACAGCAGCAACCCAGGCTTACAGCCACCTCCTA  
ATGTGACTGCTTCCCCAGCATGGATGGGCTTTTGGCAGGACCCACAATGCCACAAGCTCCTCCGCAACA  
GTTTCCATATCAACAAATATGGAATGGGACAACAACAGATCCAGCCTTTGGTCGAGTGTCTAGTCT  
CCCAATGCAATGATGTCGTAAGAATGGTCCCTCCAGAATCCCATGATGCAACACCCGAGGCTGCAT  
CCATCTACAGTCTCAGAAATGAAGGGCTGGCCATCAGGAAATTTGGCCAGGAACAGCTCTTTCCCA  
GCAGCAGTTTGGCCACCAGGGGAATCCTGCAGTGTATAGTATGGTGCACATGAATGGCAGCAGTGGTCA  
ATGGGACAGATGAACATGAACCCATGCCATGTCTGGCATGCCTATGGGTCTGATCAGAAATACTGC

ACGCGTACGCGGCCGCTCGAG - GFP Tag - GTTTAA

**Protein Sequence:** >RG230715 representing NM\_001174087  
Red=Cloning site Green=Tags(s)

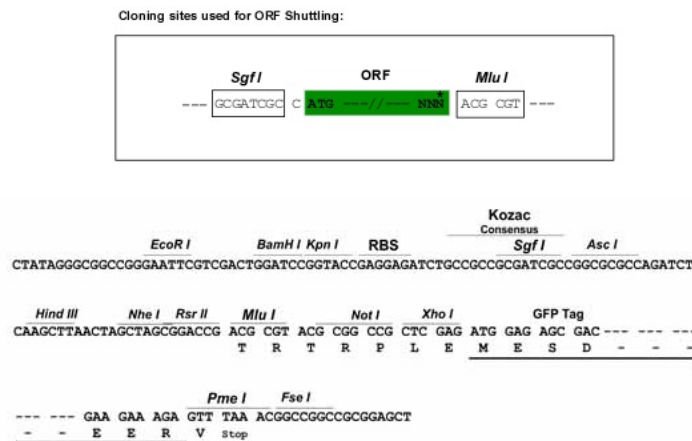
```

MSGLGENLDPLASDRKRKLPKCDTPGQGLTCSGEKRRREQESKYIEELAEIISANLSDIDNFNVKPKDKCA
ILKETVRQIRQIKEQKTI SNDDDVQKADVSSSTGQVIDKDSLGPLLLQALDGLFVFNDRDGNIVFVSEN
VTQYLQYKQEDLVNTSVYNILHEEDRKDFLKNLPKSTVNGVSWTNETQRQKSHTFNCRMLMKTPHDILED
INASPEMRQRYETMQCFALSQPRAMMEEGEDLQSCMICVARRITTGERTFSPNPEFITRHDLSGKVVNI
DTNSLRSSMRPGFEDIIRRCIQRFFSLNDGQSWSQKRHYQEAYLNHGAETPVYRFLADGTIVTAQTKSK
LFRNPVTNDRHGFVSTHFLQREQNGYRPNPNVPGQIRPPMAGCNSSVGGMSMSPNQGLQMPSSRAYGLA
DPSTTGQMSGARYGSSNIAASLTPGPGMQSPSSYQNNNYGLNMSSPPHGSPLAPNQNNIMISPRNRGSP
KIASHQFSPVAGVHSPMASSGNTGNHSFSSSSLALQAISEGVGTSLLSTLSSPGPKLDNSPNMNIQPS
KVSNDQSKSPLGFYCDQNPVSSMCQSNRDLSDKESKESSEVEGAENQRGPLESKGHKLLQLLTCSSD
DRGHSSLTNSPLDSSCKESSVSVTSPSGVSSSTSGGVSSSTSNMHGSLLQEKHRIHLKLLQNGNSPAEVAK
ITAATGKDTSSITSCGDGNVVKQEQLSPKKKENNALLRYLLDRDDPSDALSKELQPQVEGVDNKMSSQCT
SSTIPSSSQEKPKIKTETSEEGSGDLNLDAILGDLTSSDFYNNISSNGSHLGTKQQVFGTNSLGLK
SSQSVQSRPPYNRAVSLDSPVSVGSSPPVKNISAFPLPKQPMPLGGNPRMDSQENYGSSMGGPNRNV
VTQTPSSGDWGLPNSKAGRMEPMNSNSMGRPGDYNTSLPRPALGGS IPTPLRSNSIPGARPVLQQQQQ
MLQMRPGEIPMGGANPYGQAAASNQLGSWPDGMLSMEQVSHGTQNRPLLRNSLDDL VGPPSNLEGGQSD
RALLDQLHTLLSNTDATGLEEIDRALGIPELVNQQALEPKQDAFQGGQEAAMMDQKAGLYGQTYPAQGP
PMQGGFHLQGGQSPFSNMMNQMNQGNFPLQGMHPRANIMRPRNTNPKQLRMQLQQRLLQGGQFLNQSRQA
LELKMENPTAGGAAMRPMMPQPVSSQGF LNAQMV AQRSRELLSHHFQQQRVAMMMQQQQQQQQQQQQQ
QQQQQQQQQQQQQQQTQAF SPPPNVTASP SMDGLLAGPTMPQAPPQFPYQPNYGMGQQPDAFGRVSSP
PNAMMSSRMGSPQNPMMQHPQAASIYQSSEMKGWPSGNLARNSSFSQQQFAHQGNPAVYSVMVHMNGSSGH
MGQMNMNPMMPMSGMPMPGDPQKYC
    
```

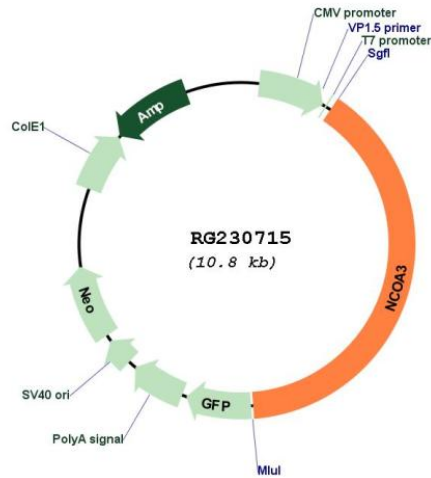
TRTRPLE - GFP Tag - V

**Restriction Sites:** SgfI-MluI

**Cloning Scheme:**



Plasmid Map:



**ACCN:** NM\_001174087

**ORF Size:** 4269 bp

**OTI Disclaimer:** The molecular sequence of this clone aligns with the gene accession number as a point of reference only. However, individual transcript sequences of the same gene can differ through naturally occurring variations (e.g. polymorphisms), each with its own valid existence. This clone is substantially in agreement with the reference, but a complete review of all prevailing variants is recommended prior to use. [More info](#)

**OTI Annotation:** This clone was engineered to express the complete ORF with an expression tag. Expression varies depending on the nature of the gene.

**Components:** The ORF clone is ion-exchange column purified and shipped in a 2D barcoded Matrix tube containing 10ug of transfection-ready, dried plasmid DNA (reconstitute with 100 ul of water).

**Reconstitution Method:**

1. Centrifuge at 5,000xg for 5min.
2. Carefully open the tube and add 100ul of sterile water to dissolve the DNA.
3. Close the tube and incubate for 10 minutes at room temperature.
4. Briefly vortex the tube and then do a quick spin (less than 5000xg) to concentrate the liquid at the bottom.
5. Store the suspended plasmid at -20°C. The DNA is stable for at least one year from date of shipping when stored at -20°C.

**RefSeq:** [NM\\_001174087.2](#)

**RefSeq Size:** 7993 bp

**RefSeq ORF:** 4272 bp

**Locus ID:** 8202

**Cytogenetics:** 20q13.12

**Protein Families:** Druggable Genome, Transcription Factors

**Gene Summary:** The protein encoded by this gene is a nuclear receptor coactivator that interacts with nuclear hormone receptors to enhance their transcriptional activator functions. The encoded protein has histone acetyltransferase activity and recruits p300/CBP-associated factor and CREB binding protein as part of a multisubunit coactivation complex. This protein is initially found in the cytoplasm but is translocated into the nucleus upon phosphorylation. Several transcript variants encoding different isoforms have been found for this gene. In addition, a polymorphic repeat region is found in the C-terminus of the encoded protein. [provided by RefSeq, Mar 2010]