

Product datasheet for **RG230709**

Cadherin like 23 (CDH23) (NM_001171930) Human Tagged ORF Clone

Product data:

Product Type:	Expression Plasmids
Product Name:	Cadherin like 23 (CDH23) (NM_001171930) Human Tagged ORF Clone
Tag:	TurboGFP
Symbol:	CDH23
Synonyms:	CDHR23; PITA5; USH1D
Mammalian Cell Selection:	Neomycin
Vector:	pCMV6-AC-GFP (PS100010)
E. coli Selection:	Ampicillin (100 ug/mL)
ORF Nucleotide Sequence:	>RG230709 representing NM_001171930 Red=Cloning site Blue=ORF Green=Tags(s)

TTTTGTAATACGACTCACTATAGGGCGGCCGGAATTCGTCGACTGGATCCGGTACCGAGGAGATCTGCC
GCC**CGATCGCC**

ATGGGGCGCCATGTTGCCACCAGCTGCCACGTGGCCTGGCTTTTGGTGCTGATCTCTGGATGCTGGGGCC
AGGTGAACCGGCTGCCCTTCTTACCAACCACTTCTTTGATACATACCTGCTGATCAGCGAGGACACGCC
TGTGGGTCTTCTGTGACCCAGTTGCTGGCCAAAGACATGGACAATGACCCCTGGTGTGGCGTGTCT
GGGAGGAGGCCCTCTCGTTCTTGCAGTGGAGCCTGACACTGGCGTGGTGTGGTCCGGCAGCCACTGG
ACAGAGAGACCAAGTCAGAGTTCACCGTGGAGTCTCTGTGACGACACCAGGGGGTGATCACACGGAA
GGTGAACATCCAGGTTGGGGATGTAATGACAACGCGCCACATTCACAATCAGCCCTACAGCGTCCGC
ATCCCTGAGAATACACCAGTGGGACGCCCATCTTCATCGTGAATGCCACAGACCCCGACTTGGGGCAG
GGGGCAGCGTCTCTACTCCTTCCAGCCCCCTCCCAATCTTCGCCATTGACAGCGCCCGCGGTATCGT
CACAGTGATCCGGGAGCTGGACTACGAGACCACACAGGCCTACCAGCTCACGGTCAACGCCACAGATCAA
GACAAGACCAGGCCTCTGTCCACCCTGGCCAATTGGCCATCATCATCACAGATGTCAGGACATGGACC
CCATCTTCATCAACCTGCCTTACAGCACAACATCTACGAGCATCTCCTCCGGGCACGACGGTGGCGAT
CATCACCGCCATAGACCAGGATAAAGGACGTCCCCGGGCATTGGCTACACCATCGTTTCAGGGAATACC
AACAGCATCTTTGCCCTGGACTACATCAGCGGAGTGTGACCTGAATGGCCTGCTGGACCGGGGAGAAC
CCCTGTACAGCCATGGCTTCATCCTGACTGTGAAGGGCACGGAGCTGAACGATGACCGCACCCCATCTGA
CGCTACAGTCACCACGACCTTCAATATCCTGGTTATTGACATCAATGACAATGCCCGGAGTTCAACAGC
TCCGAGTACAGCGTGGCCATCACTGAGCTGGCACAGGTCGGCTTTGCCCTTCCACTCTTCATCCAGGTGG
TGGACAAGGATGAGAATTTGGGCTGAACAGCATGTTTGAGGTGACTTGGTGGGGAACAACTCCCACCA
CTTCATCATCTCCCCGACCTCCGTCCAGGGGAAGGCGGACATTCGATTCGGGTGGCCATCCCACTGGAC
TACGAGACCGTGGACCGCTACGACTTTGATCTCTTTGCCAATGAGAGTGTGCCTGACCATGTGGGCTATG
CCAAGGTGAAGATCACTCTCATCAATGAAAATGACAACCGGCCATCTTCAGCCAGCCACTGTACAACAT
CAGCCTGTACGAGAACGTACCCTGGGACCTCTGTGCTGACAGTCTGGCAACTGACAATGATGCAGC



[View online >](#)

ACCTTTGGGGAAGTCAGCTACTTCTTCAGTGATGACCCTGACAGGTTCTCGCTGGACAAGGACACGGGAC
TCATCATGCTGATTGCCAGGCTGGACTATGAGCTCATCCAGCGCTTACCCCTGACGATCATTGCCCGGGA
CGGGGGCGGCGAGGAGACCACAGGCCGGTTCAGGATCAATGTGTTGGATGTCAACGACAACGTGCCACC
TTCCAGAAGGATGCCTACGTGGGTGCTCTGCGGGAGAACGAGCCTTCTGTACACAGCTGGTGGCTCC
GGGCAACAGATGAAGACTCCCCTCCCAACAACCAGATCACCTACAGCATTGTGAGTGCATCTGCCTTTGG
CAGTACTTCGACATCAGCCTGTACGAGGGCTATGGAGTGATCAGCGTCAGTCGCCCCCTGGATTATGAA
CAGATATCCAATGGGCTGATTTATCTGACGGTCATGGCCATGGATGCTGGCAACCCCTCTCAACAGCA
CCGTCCCTGTACCATCGAGGTGTTGATGAGAATGACAACCCTCCACCTTCAGCAAGCCCGCCTACTT
CGTCTCCGTGGTGGAGAACATCATGGCAGGAGCCACGGTCTGTTCTGAATGCCACAGACCTGGACCGC
TCCCGGGAGTACGGCCAGGAGTCCATCATCTACTCCTTGAAGGCTCCACCCAGTTTCGGATCAATGCC
GCTCAGGGGAAATCACCACCAGTCTCTGCTTGACCGAGAGACCAAGTCTGAATACATCCTCATCGTTCCG
CGCAGTGGACGGGGTGTGGCCACAACCAGAAAACCTGGCATCGCCACCGTAAACATCACCTCTGGAC
ATCAATGACAACCACCCACGTGGAAGGACGCACCCTACTACATCAACCTGGTGGAGATGACCCCTCCAG
ACTCTGATGTGACCACGGTGGTGGCTGTTGACCCAGACCTGGGGGAGAATGGCACCTGGTGTACAGCAT
CCAGCCACCAACAAGTTCTACAGCCTCAACAGCACCCAGGGCAAGATCCGCACCACCCAGCCATGCTG
GACCGGGAGAACCCCGACCCCATGAGGCGGAGCTGATGCGCAAAATCGTCGTCTCTGTTACTGACTGTG
GCAGGCCCCCTCTGAAAGCCACCAGCAGTGCCACAGTGTGTTGTAACCTCTTGGATCTCAATGACATGA
CCCCACCTTTCAGAACCTGCCTTTGTGGCCGAGGTGCTTGAAGGCATCCCGGGGGGGTCTCCATCTAC
CAAGTGGTGGCCATCGACCTCGATGAGGGCCTGAACGGCCTGGTGTCTACCCGATGCCGGTGGGCATGC
CCCGCATGGACTTCTCATCAACAGCAGCAGCGGGCTGGTGGTCAACCACCACCGAGCTGGACCGCGAGCG
CATCGCGGAGTACCAGCTGCGGGTGGTGGCCAGTATGACAGGCACGCCACCAAGAGCTCCACCAGCAGC
CTCACCATCCATGTGCTGGATGTGAACGACGAGACGCCACCTTCTTCCCGCCGTGTACAATGTGTCTG
TGTCGAGGAGCTGCCACGCGAGTTCGGGTGGTCTGGCTGAACGACGACGACGACGACGACGACGACGAC
TGACAGAGCTCAGTACTTATCACAGGTGGCAAGTGGATGGGAAGTTCAGCGTGGGTTACCGCGATGCC
GTTGTGAGAACCCTGGTGGCCCTGGACCGGAGACCACAGCCGCCTACATGCTCATCTGGAGGCCATCG
ACAACGGCCCTGTAGGAAGCGACACACGGGCACAGCCACCGTGTTCGTCAGTGTCTGGATGTGAATGA
CAACCGGCCCATCTTTCTGCAGAGCAGCTATGAGGCCAGCGTCCCTGAGGACATCCCTGAAGGCCACAGC
ATCTTGCAGTGAAAGCCACGGACGAGATGAGGGCGAGTTTGGGCGTGTGTGGTACCGCATCCTCCATG
GTAACCATGGCAACAACCTCCGGATCCATGTGAGCAATGGGCTCCTGATGCGAGGGCCCCGGCCCTGGA
CCGGGAGCGGAACTCATCCACGTGCTGATAGTGGAGGCCTACAACCACGACCTGGGCCCATGCGGAGC
TCCGTGAGGGTATTGTGTACGTGGAGGACATCAACGATGAGGCCCCCGTGTTCACACAGCAGCAGTACA
GCCGTCTGGGGCTTCGAGAGACCGCAGGATTGGAACGTGAGTATCGTGGTCCAAGCCACAGACCGAGA
CTCTGGGGATGGTGGCCTGGTGAACCTACCGCATCCTGTGCGGGCGCAGAGGGGAAGTTTGAATTGACGAG
AGCACAGGGCTTATCATCACCGTGAATTACCTGGACTACGAGACCAAGACCAGCTACATGATGAATGTGT
CGGCCACTGACCAGGCCCGCCCTTCAACCAGGGCTTCTGCAGCGTCTACATCACTCTGCTCAACGAGCT
GGACGAGGCCGTGCAATCTCCAATGCCTCATACGAGGCTGCCATCCTGGAGAATCTGGCACTGGTACT
GAGATTGTGCGGGTCCAGGCCTACTCCATCGACAACCTCAACCAATCACGTACCGCTTCAACGCCTACA
CCAGCACCCAGGCCAAGCCCTTCAAGATAGACGCCATCACGGTGGGGCTGGGGCAGGGAGCACC
ATTTCTTCCAATC

ACGCGTACGCGGGCCGCTCGAG – GFP Tag – GTTTAA

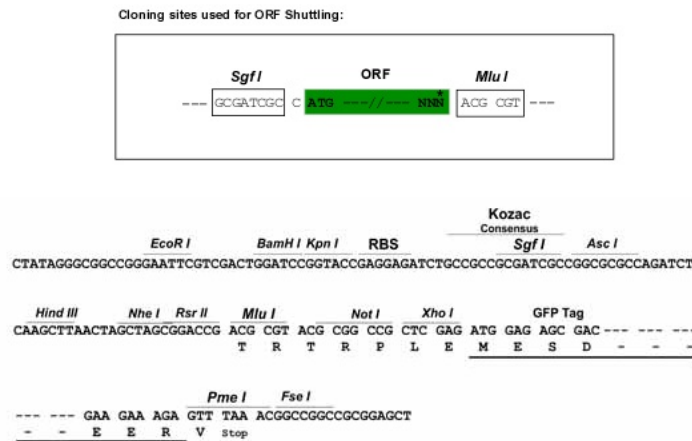
Protein Sequence: >RG230709 representing NM_001171930
 Red=Cloning site Green=Tags(s)

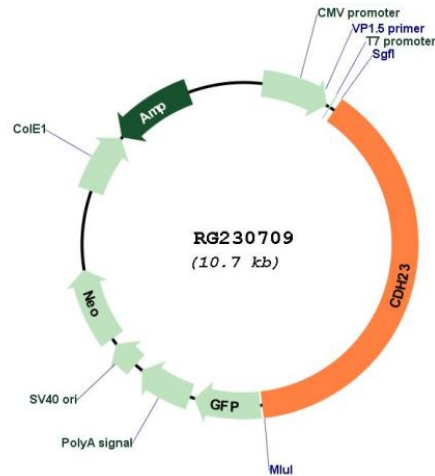
```
MGRHVATSCHVAWLLVLSGCGWQVNRLPFFTNHFFDITYLLISEDTPVGSSVTQLLAQDMDNDPLVFGVS
GEEASRFFAVEPDTGVVWLRQPLDRETKSEFTVEFVSDHQGVI TRKVNIQVGDVNDNAPTFHNQPYSVR
IPENTPVGTPIFIVNATDPLDLAGGGSVLYSFQPPSQFFAIDSARGIVTVIRELDYETTQAYQLTVNATDQ
DKTRPLSTLANLAIITDQVMDPIFINLPYSTNIYEHSPPGTTVRIITAIDQDKGRPRGIGYTIIVSGNT
NSIFALDYISGVLTLNGLLDRENPLYSHGFILTVKGTENDDRTPSDATVTTTTFNILVIDINDNAPEFNS
SEYSVAITELAQVGFALPLFIQVVDKDNELGLNSMFEVYLVGNNSHHFIIISPTSVOGKADIRIRVAIPLD
YETVDYDFDLFANESVPDHVGYAKVKITLINENDNRPIFSQPLYNISLYENVTVGTSVLTVLATDNDAG
TFGEVSYFFSDDPDRFLDKDTGLIMLIARLDYELIQRFTLTIIARDGGGEETTGRVRINVLVDVNDVPT
FQKDAYVYGALRENEPSVTQLVRLRATDEDSPPNNQITYSIVSASAFGSYFDISLYEGYGVISVSRPLDYE
QISNGLIYLTVMAMDAGNPPLNSTVPVTVIEVFDENDNPPTFSKPAYFVSVVENIMAGATVFLNATDLDR
SREYQGESIIYSLEGSTQFRINARSGEITTTSLLDRETKSEYILIVRAVDGGVGHNQKTGIATVNITLLD
INDNHPTWKDAPYYINLVEMTPPDSVTVVAVDPDLGENGLVYSIQPPNKFYSLNSTTGKIRTTAML
DRENPDPEAELMRKIVSVTDCGRPPLKATSSATVFNLLDLNDNDPTFQNLPFVAEVLEGIPAGVSIY
QVVAIDLDEGLNGLVSYRMPVGMPRMDFLINSSSGVVVTTTELDREERIAEYQLRVVASDAGTPTKSSTST
LTIHVLVDNDETPTFPAPVYVSVSEDPREFRVVWLNCTDNDVGLNAELSYFITGGNVGKFSVGYRDA
VVRTVVGLDRETTAAYMLILEAIDNGPVGKRHTGTATVFVTVLDVNDNRPIFLQSSYEASVPEDIPEGHS
ILQLKATDADEGEFGRVWYRILHGNHGNFRIHVSNGLLMRGPRLDRERNSSHVLIVEAYNHDLGPMRS
SVRVIVYVEDINDEAPVFTQQYSRLGLRETAGIGTSVIVVQATDRDSGDGGLVNYRILSGAEGKFEIDE
STGLIITVNYLDYETKTSYMMNVSATDQAPPFNQGFCSVYITLLNELDEAVQFSNASYEAAILENLALGT
EIVRVQAYSIDNLNQITYRFNAYTSTQAKALFKIDAITVRGWGQGAPFLPI
```

TRTRPLE - GFP Tag - V

Restriction Sites: SgfI-MluI

Cloning Scheme:



Plasmid Map:


ACCN: NM_001171930

ORF Size: 4143 bp

OTI Disclaimer: The molecular sequence of this clone aligns with the gene accession number as a point of reference only. However, individual transcript sequences of the same gene can differ through naturally occurring variations (e.g. polymorphisms), each with its own valid existence. This clone is substantially in agreement with the reference, but a complete review of all prevailing variants is recommended prior to use. [More info](#)

OTI Annotation: This clone was engineered to express the complete ORF with an expression tag. Expression varies depending on the nature of the gene.

Components: The ORF clone is ion-exchange column purified and shipped in a 2D barcoded Matrix tube containing 10ug of transfection-ready, dried plasmid DNA (reconstitute with 100 ul of water).

Reconstitution Method:

1. Centrifuge at 5,000xg for 5min.
2. Carefully open the tube and add 100ul of sterile water to dissolve the DNA.
3. Close the tube and incubate for 10 minutes at room temperature.
4. Briefly vortex the tube and then do a quick spin (less than 5000xg) to concentrate the liquid at the bottom.
5. Store the suspended plasmid at -20°C. The DNA is stable for at least one year from date of shipping when stored at -20°C.

RefSeq: [NM_001171930.2](#)

RefSeq Size: 4843 bp

RefSeq ORF: 4146 bp

Locus ID: 64072

UniProt ID: [Q9H251](#)

Cytogenetics: 10q22.1

Protein Families: Transmembrane

Gene Summary: This gene is a member of the cadherin superfamily, whose genes encode calcium dependent cell-cell adhesion glycoproteins. The encoded protein is thought to be involved in stereocilia organization and hair bundle formation. The gene is located in a region containing the human deafness loci DFNB12 and USH1D. Usher syndrome 1D and nonsyndromic autosomal recessive deafness DFNB12 are caused by allelic mutations of this cadherin-like gene. Upregulation of this gene may also be associated with breast cancer. Alternative splice variants encoding different isoforms have been described. [provided by RefSeq, May 2013]