

Product datasheet for **RG230703**

PCDH11X (NM_001168360) Human Tagged ORF Clone

Product data:

Product Type:	Expression Plasmids
Product Name:	PCDH11X (NM_001168360) Human Tagged ORF Clone
Tag:	TurboGFP
Symbol:	PCDH11X
Synonyms:	PCDH-X; PCDH-Y; PCDH11; PCDH11Y; PCDH22; PCDHX; PPP1R119
Mammalian Cell Selection:	Neomycin
Vector:	pCMV6-AC-GFP (PS100010)
E. coli Selection:	Ampicillin (100 ug/mL)
ORF Nucleotide Sequence:	>RG230703 representing NM_001168360 Red=Cloning site Blue=ORF Green=Tags(s)

TTTTGTAATACGACTCACTATAGGGCGGCCGGAATTCGTCGACTGGATCCGGTACCGAGGAGATCTGCC
GCC**CGATCGCC**

ATGGACTTGTGTCCGGGACGTACATTTTCGCGGTCTGCTAGCATGCGTGGTGTCCACTCTGGCGCC
AGGAGAAAACTACACCATCCGAGAAGAAATGCCAGAAAACGTCCTGATAGGCGACTTGTGAAAGACCT
TAATTGTGCTGATTCCAAACAAGTCTTGACAACGCTATGCAGTTCAAGCTAGTGTACAAGACCGGA
GATGTGCCACTGATTGCAATTGAAGAGGATACTGGTGAGATCTTCACTACTGGCGCTCGCATTGATCGT
AGAAATTATGTGCTGGTATCCCAAGGGATGAGCATTGCTTTTATGAAGTGGAGGTTGCCATTTTCCCGGA
TGAAATATTTAGACTGGTTAAGATACGTTTTCTGATAGAAGATATAAATGATAATGCACCATTGTTCCCA
GCAACAGTTATCAACATATCAATTCCAGAGAACTCGGCTATAAACTCTAAATATACTCTCCAGCGGCTG
TTGATCCTGACGTAGGAATAAACGGAGTTCAAACTACGAACTAATTAAGAGTCAAAACATTTTTGGCCT
CGATGTCATTGAAACACCAGAAGGAGACAAGATGCCACAACGATGTTTCAAAGGAGTTAGATAGGGAA
GAGAAGGATACCTACGTGATGAAAGTAAAGTTGAAGATGGTGGCTTTCTCAAAGATCCAGTACTGCTA
TTTTGCAAGTGAAGTACTGATACAAATGACAACCCAGTCTTTAAGGAGACAGAGATTGAAGTCAG
TATACCAGAAAAATGCTCCTGTAGGCACTTCAGTGACACAGCTCCATGCCACAGATGCTGACATAGGTGAA
AATGCCAAGATCCACTTCTTTTCAGCAATCTAGTCTCCAACATTGCCAGGAGATTATTTACCTCAATG
CCACCACTGGACTTATCACAATCAAAGAACCAGTGGATAGGGAAGAAACACCAAAACCACAAGTTACTGGT
TTTTGGCAAGTGAAGTGGATTGATGCCAGCAAGAGCAATGGTGGTAAATGTTACAGATGTCAATGAT
AATGTCCCATCCATTGACATAAGATACATCGTCAATCCTGTCAATGACACAGTTGTTCTTTTCAGAAAATA
TTCCACTCAACACCAAAATTGCTCTCATAACTGTGACGGATAAAGGATGCGGACCAATAATGGCAGGGT
ATGCTTACAGATCATGAAATCCCTTTTCAGATTAAGGCCAGTATTCAGTAATCAGTTCTCTCTGGAGACT
GCAGCATATCTTGACTATGAGTCCAAAAAGAATATGCCATTAATTAAGTGGCTGCAGATGCTGGCAAAC
CTCCTTTGAATCAGTCAGCAATGCTCTTCATCAAAGTAAAGATGAAATGACAATGCTCCAGTTTTAC
CCAGTCTTTCGTAACGTTTCTATTCTGAGAATAACTCTCTGGCATCCAGTTGACGAAAGTAAGTGCA



[View online »](#)

ATGGATGCAGACAGTGGGCCAATGCTAAGATCAATTACCTGCTAGGCCCTGATGCTCCACCTGAATTCA
GCCTGGATTGTCGTACAGGCATGCTGACTGTAGTGAAGAACTAGATAGAGAAAAAGAGGATAAATATTT
ATTCACAATTCTGGCAAAAGATAACGGGGTACCACCCCTAACCAGCAATGTCACAGTCTTTGTAAGCATT
ATTGATCAGAATGACAATAGCCAGTTTTCACTCACAATGAATACAACCTCTATGTCCCAGAAAACCTTC
CAAGGCATGGTACAGTAGGACTAATCACTGTAAGTATGCTGATTATGGAGACAATCTGCAGTTACGCT
CTCCATTTTAGATGAGAATGATGACTTCACCATTGATTCACAACTGGTGTATCCGACCAAAATATTTCA
TTTGTAGAGAAAAACAAGAATCTTACACTTTCTATGTAAGGCTGAGGATGGTGGTAGAGTATCACGTT
CTTCAAGTGCCAAAGTAACCATAAATGTGGTTGATGTCAATGACAACAAACCAGTTTTTCATTGTCCCTCC
TTCCAAGTGTCTTATGAATTGGTTCTACCGTCCACTAATCCAGGCACAGTGGTCTTTCAGGTAATTGCT
GTTGACATGACACTGGCATGAATGCAGAGGTTTCGTTACAGCATTGTAGGAGGAAACACAAGAGATCTGT
TTGCAATCGACCAAGAAACAGGCAACATAACATTGATGGAGAAATGTGATGTTACAGACCTTGGTTTACA
CAGAGTGTGGTCAAAGCTAATGACTTAGGACAGCCTGATTCTCTTTCAGTGTGTAATTGTCAATCTG
TTCGTGAATGAGTCGGTGACCAATGCTACACTGATTAATGAACTGGTGCAGAAAAGCACTGAAGCACCAG
TGACCCCAAACTAGAGTAGCTGATGTATCCTACCAACTAGTACTATGTCAAGATCCTGGTTGCAGC
TGTTGCTGGCACCATAACTGTCGTTGTAGTTATTTTCATCACTGCTGTAGTAAGATGTCGCCAGGCACCA
CACCTTAAGGCTGCTCAGAAAAACAAGCAGAATCTGAATGGGCTACCCCAACCCAGAAAAACAGGCAGA
TGATAATGATGAAGAAAAAGAAAAAGAAGAAGCATTCCCCTAAGAATTGCTGCTTAATTTTGTAC
TATTGAAGAACTAAGGCAGATGATGTTGACAGTGTGAAACAGAGTCACACTAGACCTTCCATTGAT
CTAGAAGAGCAACAATGGGAAAGTACAATTGGGTAACACTACCTACTACTTTCAAGCCCGACAGCCCTG
ATTTGGCCCGACACTACAAATCTGCCTCTCCACAGCCTGCCTTCCAAATTCAGCCTGAAACTCCCCTGAA
TTCGAAGCACCACATCATCCAAGAACTGCCTCTCGATAACACCTTTGTGGCCTGTACTCTATCTCCAAG
TGTTCCCAAGCAGTTTCAGATCCCTACAGCCTTCTGACTGTGGCTATCCAGTGACGACCTCGAGGTAC
CTGTGTCGATACACACCAGCCCAATGAAGGAGGTTGTGCGATCTTGACACCCCAATGAAAGAGTCTAC
AACTATGGAGATCTGGATTCATCCCAACCACAGCGGAAATCTGAAGGAAAGTGGCAGGAAAGTCCAG
CGGCGTGTACATTTACCTGCCAGAAGGCTCTCAGGAAAGCAGCAGTGTGGTGGACTGGGAGACCATG
ATGCAGGCAGCCTTACCAGCACATCTCATGGCCTGCCCTTGGCTATCCTCAGGAGGAGTACTTTGATCG
TGCTACACCCAGCAATCGCACTGAAGGGGATGGCAACTCCGATCCTGAATCTACTGCAGAAATAACTGTT
CAACCAACTGTGGAAGAGGCTCTGACAACTGCACTCAAGAAATGTCTCATCTATGGCCATTCTGATGCCT
GCTGGATGCCGGCATCTGGATCATTCCAGCTCTTCGCAAGCACAGGCCTCTGCTCTATGCCACAGCCC
ACCACTGTACAGGCCTTACTCAGCACCACAGCCACGAGTGACACAGACCATTGCTCTCTGCCACAGC
CCTCCAGTGACACAGACCATCGCATTGTGCCACAGCCCACCACCGATACAGGTGTCTGCTCTCCACCACA
GTCTCTCTAGTGCAGGCTACTGCACTTACCACAGCCACCATCAGCACAGGCCTCAGCCCTCTGCTA
CAGCCCTCCTTTAGCACAGGCTGCTGCAATCAGCCACAGCTCTCCTCTGCCACAGGTTATTGCCCTCCAT
CGTAGTCAGGCCAATCATCAGTCAGTTTGCAGCAAGGTTGGGTGCAAGGTGCTGATGGGCTATGCTCTG
TTGATCAGGGAGTGAAGGTAGTGAACATCTCAGTTTTACACCATGTCTGAAAGACTTCATCCCAGTGA
TGATTCATTAAGTCATTCTTTGACAACCTTCACTCCACGCCAACAGGCCAGACCCTCCAGAGGTGAT
TCCCCATTATGGAAGAATCCCTTG

ACGCGTACGCGGCCGCTCGAG - GFP Tag - GTTTAA

Protein Sequence: >RG230703 representing NM_001168360
 Red=Cloning site Green=Tags(s)

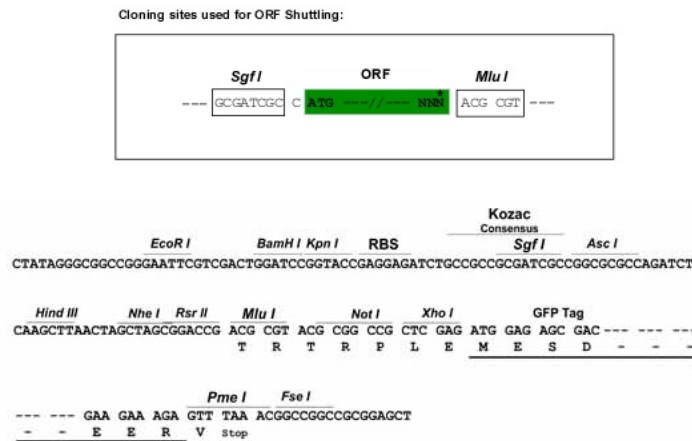
MDLLSGTYIFAVLLACVVFHSGAQEKNYTIREEMPENVLIGDLLKDLNLSLIPNKSLTTAMQFKLVYKTG
 DVPLIRIEEDTGEIFTTGARIDREKLCAGIPRDEHCFYEVEVAILPDEIFRLVKIRFLIEDINDNAPLFP
 ATVINISIPENSAINSKYTLPAAVDPDVINGVQNYELIKSQNIFGLDVIETPEGDKMPQLIVQKELDRE
 EKDTYVMKVKVEDGGFPQRSSTAILQVSVTDNDNHPVFKETEIEVSIPENAPVGTSVTQLHATDADIGE
 NAKIHFSFNLVSNIAARRLFHLNATTGLITIKPELDREETPNHKLLVLASDGGLMPARAMVLVNVTDVND
 NVPSIDIRYIVNPVNDTVVLSENIPLNTKIALITVTDKADHNGRVTCFTDHEIPFRLRPVFSNQFLEET
 AAYLDYESTKEYAIKLLAADAGKPLNQSAMLFIKVKDENDNAPVFTQSFVTVSIPENNSPGIQLTKVSA
 MDADSGPNAKINYLPGDAPPEFSLDCRTGMLTVVKKLDREKEDKYLFTILAKDNGVPLTSNVTVFVSI
 IDQNDNSPVFTHNEYNFYVPENLPRHGTVGLITVTDPDYGDNSAVTLILDENDDFTIDSQTGVIRPNIS
 FDREKQESYTFYVKAEDGGRVSRSSAKVTINVVDVNDNKPVFI VPPSNCSYELVLPSTNPGTVVFQVIA
 VDNDTGMNAEVRYSIVGGNTRDLFAIDQETGNITLMEKCDVTDLGLHRVLVKANDLGQPDLSFVIVNVL
 FVNESVTNATLINELVRKSTEAPVTPNTEIADVSSPTSDYVKILVAAVAGTITVVVVFITAVVRCRQAP
 HLKAAQKNKQNSEWATPNPENRQIMMKKKKKKKHSPKNLLNFVTIEETKADDVSDGGRVTLDLPID
 LEEQTMGKYNWVTTPTTFKPDSPDLARHYKSASPQAFQIQPETPLNSKHIIQELPLDNTFVACDSISK
 CSSSSSDPYSDCGYPVTTFEVPSVHTRPPMKEVVRSCPTMKESTTMEIWIHPQPQRKSEGKVAGKSQ
 RRVTFFHLPEGSQESSSDGGLGDHDAGSLTSTSHGLPLGYPQEEYFDRATPSNRTEGDGNSDPESTAEITV
 QPTVEEASDNCTQECLIYGHSDACWMPASLDHSSSSQAQASALCHSPPLSQASTQHHSRVTQTIALCHS
 PPVTQTIALCHSPPIQVSALHHSPLVQATALHHSPPSAQASALCYSPLAQAIAISHSSPLPQVIALH
 RSQAQSSVSLQQGWVQADGLCSVDQGVQGSATSQFYTMSERLHPSDDSIKVIPLTFTFPRQARPSRGD
 SPIMEEHPL

TRTRPLE - GFP Tag - V

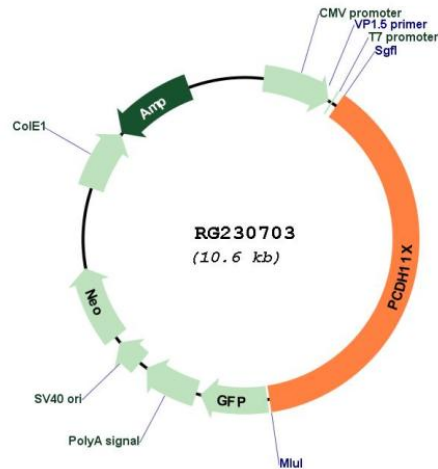
Restriction Sites:

SgfI-MluI

Cloning Scheme:



Plasmid Map:



ACCN: NM_001168360

ORF Size: 4017 bp

OTI Disclaimer: The molecular sequence of this clone aligns with the gene accession number as a point of reference only. However, individual transcript sequences of the same gene can differ through naturally occurring variations (e.g. polymorphisms), each with its own valid existence. This clone is substantially in agreement with the reference, but a complete review of all prevailing variants is recommended prior to use. [More info](#)

OTI Annotation: This clone was engineered to express the complete ORF with an expression tag. Expression varies depending on the nature of the gene.

Components: The ORF clone is ion-exchange column purified and shipped in a 2D barcoded Matrix tube containing 10ug of transfection-ready, dried plasmid DNA (reconstitute with 100 ul of water).

Reconstitution Method:

1. Centrifuge at 5,000xg for 5min.
2. Carefully open the tube and add 100ul of sterile water to dissolve the DNA.
3. Close the tube and incubate for 10 minutes at room temperature.
4. Briefly vortex the tube and then do a quick spin (less than 5000xg) to concentrate the liquid at the bottom.
5. Store the suspended plasmid at -20°C. The DNA is stable for at least one year from date of shipping when stored at -20°C.

RefSeq: [NM_001168360.1](#), [NP_001161832.1](#)

RefSeq Size: 8365 bp

RefSeq ORF: 4020 bp

Locus ID: 27328

UniProt ID: [Q9BZA7](#)

Cytogenetics: Xq21.31

Protein Families: Transmembrane

Gene Summary: This gene belongs to the protocadherin gene family, a subfamily of the cadherin superfamily. The encoded protein consists of an extracellular domain containing 7 cadherin repeats, a transmembrane domain and a cytoplasmic tail that differs from those of the classical cadherins. The gene is located in a major X/Y block of homology and its Y homolog, despite divergence leading to coding region changes, is the most closely related cadherin family member. The protein is thought to play a fundamental role in cell-cell recognition essential for the segmental development and function of the central nervous system. Disruption of this gene may be associated with developmental dyslexia. Alternative splicing results in multiple transcript variants. [provided by RefSeq, Jun 2014]