

Product datasheet for **RG230702**

IL16 (NM_001172128) Human Tagged ORF Clone

Product data:

Product Type: Expression Plasmids
Product Name: IL16 (NM_001172128) Human Tagged ORF Clone
Tag: TurboGFP
Symbol: IL16
Synonyms: LCF; NIL16; prIL-16; PRIL16
Mammalian Cell Selection: Neomycin
Vector: pCMV6-AC-GFP (PS100010)
E. coli Selection: Ampicillin (100 ug/mL)
ORF Nucleotide Sequence: >RG230702 representing NM_001172128
Red=Cloning site Blue=ORF Green=Tags(s)

TTTTGTAATACGACTCACTATAGGGCGGCCGGAATTCGTCGACTGGATCCGGTACCGAGGAGATCTGCC
GCC**CGATCGCC**

ATGGAGTCGCACAGCCGCGCTGGAAGAGCAGAAAATCTGCAAAATTCGGTCCATCTCCAGGTCCTGA
TGCTCTGTAATGCTAAGACCAGTGATGATGGCTAGCCCTGATGAGAAATATCTGATCCCTTTGAGAT
TTCCTTGCCAGGGCAAGGAGGAATTTCCACTCATCTGTGCAGCTGGCAGACACATCGGAGGCTGGG
CCCAGCAGTGTTCTGATCTAGCACTGGCCTCGGAGGCTGCTCAACTCCAAGCAGCTGGGAATGATCGAG
GCAAGACCTGTAGGAGGATATTCTCATGAAGGAATCTCCACAGCTTCTCTCGAGAAAAGCCTGGAAA
ACTAGAAGCACAAGTAGTAACCTCCTGTTTCTAAAGCCTGCCACAAAGGGCAGCAGCAACTCAACC
AGTGTAAATCCCTATTGCACAAGAGAAATTGATTTTCAAATGACCAAGAAATCTGCAGCGCCACCGACA
GGCAGCCTTACTCTCTCTGCAGTAACAGGAAGTCCCTCTCTCAACAATTGGACTGTCCAGCAGGAAAGGC
TGCGGGAACCTCGAGACCAACACGGTCCCTGAGCACAGCTCAGCTCGTGCAGCCATCTGGGGCCTCCAG
GCTTCAGTCATCTCCAACATCGTGTGATGAAGGGCCAGGCTAAGGGTCTGGGCTCAGCATCGTTGGGG
GAAAAGACAGCATTTATGGCCCCATTGGGATTTACGTCAAACCATTTTTGCAGGGGAGCAGCAGCAGC
CGATGGAAGGCTACAGGAAGGTGATGAAATCTGGAGCTCAATGGTGAATCAATGGCTGGACTAACACAT
CAGGATGCTTTGCAGAAGTTCAAGCAAGCCAAAAGGGGCTCCTCACCTCACCGTGAGAACCCGCTGA
CGGCGCCTCCTTCCCTGTGCAGCCACTGTCTCCCCACTGTGCCGCTCCCTGAGCTCCAGCACTTGAT
CACCAAGGACAGCAGCTCCTTCGCCTTGAAAAGCCCTCGGCTCCCATCAGCACCGCCAAGCCCAATTAC
AGAATCATGGTGGAGTTTCTCTGCAGAAAAGGCCGGCGTGGGCTGGGCATCGGCTGTGCAGCGTTC
CCTACTTCCAATGCATCTCTGGCATTTCGTCCACACGCTGTACCAGGATCCGTGGCGCACCTGGACGG
ACGTCTCCGGTGTGGGACGAGATTGTGAAAATCAGTGATTCCCCTGTGCACTGCCTGACGCTCAATGAA
GTCTACACGATCCTGAGTCACTGTGATCCCGTCCAGTCCCCATCATTGTTAGCCGACATCCAGACCCAC
AGGTCTCTGAACAGCAACTCAAAGAAGCTGTGGCCAGGCTGTGAAAACACCAAGTTTGGAAAAGGAGAG
GCATCAGTGGAGTCTGGAAGGTGTCAAAAGGCTGGAAGCAGTTGACAGGGCGGCCACCTTGGAGAAG



[View online >](#)

GAACGAGAGAAGAACTCAGCACCCCGCATCGCAGGGCTCAGAAGGTCATGATCCGCTCCAGCAGTGACA
GCAGTACATGTCTGGTCCCCAGGGGAAGTCTGGGAGTGGCAGTGTGAGAAGCCGTCTCTGACGT
GGACATCAGCACACAGCCCCAGCTTGCTCTGGCACGGGAGCCAGTGGTGCTTTCTATAGCATCCTCC
AGGCTGCCCCAGGAGAGCCACCCTCCAGAGAGCCGGGACAGCCACCCGCCGTGAGACTGAAGAAAT
CCTTTGAGATTTTGGTGAGAAAGCCTATGTCCTCAAGCCCAAGCCTCCACCCAGAAAATACTTTAAAG
TGACAGTGACCCTCAGAAGAGTCTGGAAGAGAGAGAGAACTCCTCATGCTTTCTGGGCACACCCACCC
ACCTGTGGCCAGGAAGCGAGAGAGCTGCTGCCACTGCTGTACCACAGGAAGACACAGCAGGGAGAAGCC
CTAGTGCCTCTGCCGGCTGCCCAGGACCTGGTATCGGCCACAGACCAAGTCTCCACAGAGGGCGAGCC
AGGGTGGAGAAGAGCCAGCCAGTGACCCAAACATCCCCGATAAAAACACCCACTGCTTAAGAGGCAGGCT
CGGATGGACTATAGCTTTGATACCACAGCCGAAGACCCTTGGGTTAGGATTTCTGACTGCATCAAAAAT
TATTTAGCCCCATCATGAGTGAGAACCATGGCCACATGCCTCTACAGCCCAATGCCAGCCTGAATGAAGA
AGAAGGGACACAGGGCCACCCAGATGGGACCCACAAAGCTGGACACCGCCAATGGCACTCCCAAAGTT
TACAAGTCAGCAGACAGCAGCACTGTGAAGAAAGTCTCTGTGGCTCCAAGCCAGCCTGGTTTCGCC
AAAGCTTGAAGGTTTGAGGAATCGTGCTCAGACCCAAGAGGGCTCCCTGATCCTGCCTGTCCACCCA
GCCAGCACCTGCTCCAGGGAGCACCTAGGATCACACATCCGGGCTCCTCCTCCTCCTCCTCCTCAGG
CAGAGAATCAGCTCCTTTGAAACCTTTGGCTCCTCTCAACTGCCTGACAAGGAGCCAGAGACTGAGCC
TCCAGCCCTCCTCTGGGAGGCAGCAAAACCTCTTGGGAAGCATGAGGAAGGACGGTTTTCTGGACTCTT
GGGGCAGGGGCTGCACCCACTCTGTGCCCCAGCAGCCTGAGCAAGTACTGTCTCGGGTCCCCGTGCA
GCCTCCGAGGCCAGAGACCCAGGTGTGTCTGAGTCCCCTCCCCAGGGCGGCAGCCCAATCAGAAAATC
TCCCCCTGGCCCGACCCGCTCCTAAGGCTGTGTCAACACAGGCTGAGGAATCTAAGGCCAGTGTCT
CAAGATGCCTAGCCAGCAGCAGCAGGAGCTTCCCCGTGACCAGTCCCAGTCTGTGAGACGAAGTACTT
GACGAAAAGACCAGCAAACTCTATTCTATCAGCAGCCAAGTGTGATCGGCTGTGATAAATCCTTGCTGT
GCCTTCCATCTTCTATCTCTGTGCCAGACTCCCTGCATCCCCAAGGAAGGGGCATCTCAACATCATC
ATCCAACGAAGACTCAGCTGCAAAATGGTTCTGCTGAAACATCTGCCTTGGACACAGGGTTCTCGTCAAC
CTTTCAGAGCTGAGAGAATATACAGAGGTCTCACGGAAGCCAAGGAAGACGATGATGGGACCACAGTT
CCCTTCAGTCTGGTCAGTCCGTTATCTCCCTGCTGAGCTCAGAAGAATAAAAAACTCATCGAGGAGGT
GAAGGTTCTGGATGAAGCAACATTAAGCAATTAGACGGCATCCATGTCACCATCTTACACAAGGAGGAA
GGTGTGGTCTTGGGTTGAGCTTGGCAGGAGGAGCAGATCTAGAAAACAAGGTGATTACGGTTCACAGAG
TGTTTCCAAATGGGCTGGCTCCAGGAAGGGACTATTAGAAGGCAATGAGGTTCTTTCCATCAACGG
CAAGTCTCTCAAGGGACACGCACCATGATGCCTTGGCCATCCTCCGCAAGCTCGAGAGCCAGGCAA
GCTGTGATTGTACAAGGAAGTACTCCAGAGGCCATGCCGACCTCAACTCCTCCACTGACTCTGCAG
CCTCAGCCTCTGCAGCCAGTGTATTTCTGTAGAATCTACAGAGGCCACAGTCTGCACGGTGACACTGGA
GAAGATGTCGGCAGGGCTGGGCTTCAGCCTGGAAGGAGGGAAGGGCTCCCTACACGGAGACAAGCCTCTC
ACCATTAACAGGATTTTCAAAGGAGCAGCCTCAGAAACAAGTGAAGACAGTCCAGCCTGGAGATGAAATCT
TGCAGCTGGGTGGCACTGCCATGCAGGGCCTCACACGGTTTGAAGCCTGGAACATCATCAAGGCACTGCC
TGATGGACCTGTACGATTGTATCAGGAGAAAAAGCCTCCAGTCCAAGGAAACCACAGTGTCTGGAGAC
TCC

ACGCGTACGCGGCCGCTCGAG - GFP Tag - GTTTAA

Protein Sequence: >RG230702 representing NM_001172128
 Red=Cloning site Green=Tags(s)

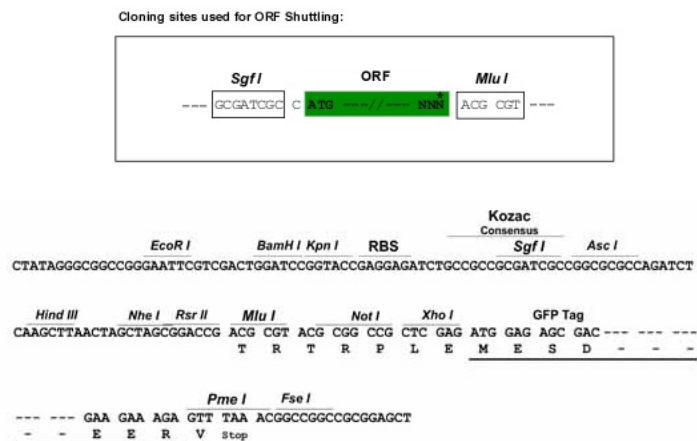
MESHSRAGKSRKSAKFRSISRSLMLCNAKTSDDGSSPDEKYPDPFEISLAQKKEGIFHSSVQLADTSEAG
 PSSVPDLALASEAAQLQAAGNDRGKTCRRIFFMKESSTASSREKPGKLEAQSSNFLFPKACHQRARSNST
 SVNPYCTREIDFPMTKKSAAPTDRQPYSLCSNRKLSLQQLDCPAGKAAGTSRPTRSLSAQLVQPSGGLQ
 ASVISNIVLMKGQAKGLGFIVGGKDSIYGPIGIYVKTIFAGGAAAADGRLQEGDEILELNGESMAGLTH
 QDALQKFKQAKKGLLTLTVRTRLTAPSLCSHLSPLCRSLSSSTCITKSSSFALESAPSAPISTAKPNY
 RIMVEVSLQKEAGVGLGIGLCSVPYFQCISGIFVHTLSPGSVAHLDGRLRCGDEIVEISDSPVHCLTLNE
 VYTIILSHCDPGPVPIIVSRHPDPQVSEQLKEAVAQAVENTKFGKERHQWSLEGVKRLESSWHGRPTLEK
 EREKNSAPPHRAQKVMIRSSSDSSYMSGSPGSGSAEKSSDVIDISTHSPSLPLAREPVVLSIASS
 RLPQESPLPESRDSHPPLRLKKSFEILVRKPMSSKPKPPPRKYFKSDSDPQKSLEERENSSCSSGHTPP
 TCGQEAARELLPLLLPQEDTAGRSPSASAGCPGPGIGPQTKSSTEGEPGWRRASPVQTSPIKHPLLKRQA
 RMDYSFDTTAEDPWVRI SDCIKNLFSPISENHGHMPLQPNASLNEEETQGHPDTPPKLDTANGTPKV
 YKSADSSTVKKGPPVAPKPAWFRQSLKGLRNRASDPRLPDPALSTQPAPASREHLGSHIRASSSSSIR
 QRISSEFTFGSSQLPDKGAQRLSLQPSSGEAAKPLGKHEEGRFSGLLGRGAAPTLVPQQEQVLSGSPA
 ASEARDPGVSESPPPGRQPNQKTLPPGPDPLRLLLSTQAEESQGPVLMKPSQRARSFPLTRSQSCETKLL
 DEKTSKLYSISQVSSAVMKSLLLCLPSSI SCAQTPCIPKEGASPTSSSNEDSAANGSAETSALDTGFSLN
 LSELREYTEGLTEAKEDDDGDHSSLQSGQSVISLLSSEELKKLIEEVKVLDEATLKQLDGIHVTILHKEE
 GAGLGFSLAGGADLENKIVTVHRVFPNGLASQEGTIQKNEVLSINGKSLKGTTHHDALAILRQAREPRQ
 AVIVTRKLTPEAMPDLNSSTDSASAASDVSVESTEATVCTVTLEKMSAGLGFLEGGKSLHGDKPL
 TINRIFKGAASEQSETVQPGDEILQLGGTAMQGLTRFEAWNIKALPDGPVTIVIRKSLQSKETTAAGD
 S

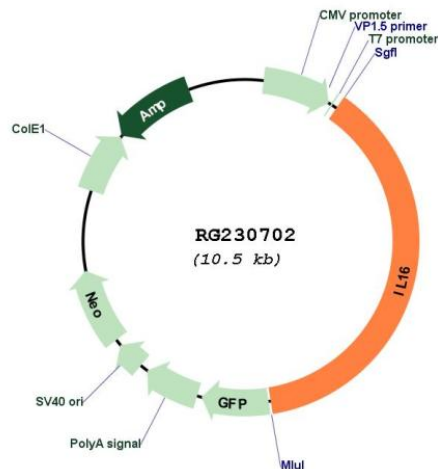
TRTRPLE - GFP Tag - V

Restriction Sites:

SgfI-MluI

Cloning Scheme:



Plasmid Map:


ACCN: NM_001172128

ORF Size: 3993 bp

OTI Disclaimer: The molecular sequence of this clone aligns with the gene accession number as a point of reference only. However, individual transcript sequences of the same gene can differ through naturally occurring variations (e.g. polymorphisms), each with its own valid existence. This clone is substantially in agreement with the reference, but a complete review of all prevailing variants is recommended prior to use. [More info](#)

OTI Annotation: This clone was engineered to express the complete ORF with an expression tag. Expression varies depending on the nature of the gene.

Components: The ORF clone is ion-exchange column purified and shipped in a 2D barcoded Matrix tube containing 10ug of transfection-ready, dried plasmid DNA (reconstitute with 100 ul of water).

Reconstitution Method:

1. Centrifuge at 5,000xg for 5min.
2. Carefully open the tube and add 100ul of sterile water to dissolve the DNA.
3. Close the tube and incubate for 10 minutes at room temperature.
4. Briefly vortex the tube and then do a quick spin (less than 5000xg) to concentrate the liquid at the bottom.
5. Store the suspended plasmid at -20°C. The DNA is stable for at least one year from date of shipping when stored at -20°C.

RefSeq: [NM_001172128.1](#), [NP_001165599.1](#)

RefSeq Size: 8322 bp

RefSeq ORF: 3996 bp

Locus ID: 3603

UniProt ID: [Q14005](#)

Cytogenetics: 15q25.1

Protein Families: Druggable Genome, Secreted Protein

Gene Summary: The protein encoded by this gene is a pleiotropic cytokine that functions as a chemoattractant, a modulator of T cell activation, and an inhibitor of HIV replication. The signaling process of this cytokine is mediated by CD4. The product of this gene undergoes proteolytic processing, which is found to yield two functional proteins. The cytokine function is exclusively attributed to the secreted C-terminal peptide, while the N-terminal product may play a role in cell cycle control. Caspase 3 is reported to be involved in the proteolytic processing of this protein. Alternate splicing results in multiple transcript variants. [provided by RefSeq, Feb 2010]