

## Product datasheet for **RG230674**

### CAMTA2 (NM\_001171168) Human Tagged ORF Clone

#### Product data:

Product Type:	Expression Plasmids
Product Name:	CAMTA2 (NM_001171168) Human Tagged ORF Clone
Tag:	TurboGFP
Symbol:	CAMTA2
Mammalian Cell Selection:	Neomycin
Vector:	pCMV6-AC-GFP (PS100010)
E. coli Selection:	Ampicillin (100 ug/mL)
ORF Nucleotide Sequence:	>RG230674 representing NM_001171168 Red=Cloning site Blue=ORF Green=Tags(s)

TTTTGTAATACGACTCACTATAGGGCGGCCGGGAATTCGTCGACTGGATCCGGTACCGAGGAGATCTGCC  
GCC**CGATCGCC**

ATGGGCACAGACTCCCCCTCCCCCGGCCCTCAGGCCGGGGTGACCTTGCCCCCTGGAGCCCTCACCA  
TGAATACCAAGGACACCACCGAGTTGCTGAAAACAGCCACCCTGAAGATCTTTCTCCCCAAGAAGCT  
GCTGGAGTGTCTTCTCGCTGCCGCTGCTGCCTCCAGAGAGGCTACGGTGAATACAAATGAGGAGATT  
GCATCCTACCTGATCACCTTTGAGAAGCATGATGAGTGGCTGTCTTGCCCCAAAGACAAGGCCCTCAGA  
ATGGCTCCATCATCTCTACAATCGAAGAAGGTGAAATATCGGAAGGATGGTTACCTCTGGAAGAAGCG  
GAAGGATGGGAAGACCACCCGAGAGACCACATGAAGCTGAAGGTCCAGGCATGGAGAACCCTGACATC  
GTCCTTGTGCACTACCTGAACGTCCCAGCCCTGGAGGACTGTGGAAAGGGCTGCAGCCCCATCTTTTGT  
CCATCAGCAGCGACCGTCGAGAGTGGCTGAAGTGGTCCCGGGAGGAGTTGTTGGGACAGCTGAAGCCCAT  
GTTTCATGGCATCAAGTGGAGCTGCGGGAATGGAACAGAAGATTCTCTGTAGAACACCTGGTGCAGCAG  
ATTTTGGACACCCACCAACCAAGCCTGCTCCCCGAACCCACGCCTGTCTCTGCAGTGGGGGGCTTGTT  
CTGGGAGCCTTACCCACAAATGCAGCAGCAGAAACCCGCATCATCTCTCCAAAGTGGAGCCCCGAGC  
TTAAACCCTGACCTCTATCCCCAGCTCACCCCCAGAGCCTCCTCCACTGATAGCCCCACTTCCCCCA  
GAGCTCCCAAGGCACACACCTCCCATCTTCT  
TAGAAATCAGACCTAGCCCTCCCACTTCTCGAGGGGGTCTTCAAGAGGAGGCACTGCTATCCTCCTCCT  
GACAGGACTGGAGCAGCGGGCTGGAGGCTTGACGCCACCCAGGCCTTGCTCCACAGGCTGATCCTAGG  
CCTTCCATGAGTTTGGCAGTGGTTGTAGGCACTGAGCCTTCTGCCCCACCAGCTCCTCCCAGTCTGCT  
TTGACCCTGATCGTTTTCTCAACAGCCCCAGAGGGGCCAGACATATGGAGGGGGCAGGGAGTAAGCCC  
AGACTTCCCCGAGGCAGAGGCGCTCATACCCCTGTTCTGCCCTAGAGCCTGCTGCTGCCCTGGAGCCC  
CAGGCAGCTGCTCGGGTCCCCACACAGTCAGTAGCAGGTGGGAGAAGAGGAAACTGCTTCTTCATCC  
AAGATGATGACAGTGGGAGGAGCTCAAGGTCACGGGGCTGCCCAACCCATACCTTACCCCTCCCTC  
ACCCCAACCTCACCTGCCCTTTGGAGCCGCAAGCAGGGTAGGAAGAGGAGAGGCTTGTTTGGAGGA  
CCTGTTGGGGCCAGTGAAGTGGAGCCCTTCAGTCTTTCATCATTCCAGACCTTATGGGAGAAGTCA  
GTGACGAAGCTCAAGCATCCCTGCTCCGACCCCCAGCTGTCTCTGCTCTTAGCACCATCACAGACTT



[View online >](#)

CTCCCCAGAGTGGTCTACCCAGAGGGTGGGGTCAAGGTGCTCATCACAGGTCCTTGACCGAAGCCGCC  
GAGCATTACTCCTGTGTCTTTGATCACATCGCAGTGCCAGCCTCACTTGTCCAGCCTGGTGTCTTACGCT  
GCTACTGTCCCGCCATGAGGTAGGGCTGGTGTCTTTGCAGGTGGCAGGGCGGGAGGGGCCCTTTCTGC  
TTCTGTGCTCTTTGAGTATCGAGCCCGCGATTCTGTCTCTGCCTAGTACTCAACTTGACTGGCTGTCA  
CTGGACGACAACCAGTTCGGATGTCCATACTAGAGCGACTGGAGCAGATGGAGAAGCGGATGGCAGAGA  
TCGCAGCAGCTGGCAGGTGCCTTGCCAGGGTCTGATGCTCCTCCAGTTCAGGATGAAGGCCAGGGGCC  
TGGGTTTGAAGCACGGGTAGTGGTCTTGGTAGAAAGCATGATCCCACGCTCCACCTGGAAGGGTCTGAA  
CGTCTGGCCCATGGAAGCCCTTCCGGGGCATGAGCCTTCTGCACCTGGCTGCTGCCAGGGCTATGCC  
GCCTCATCGAGACCCTGAGCCAGTGGCGGAGTGTGGAGACTGGAAGCTTGGACTTAGAGCAGGAGTTGA  
CCCCTCAACGTGGATCATTTCTCTTGACCCCTCTGATGTGGGCTTGTGCCCTGGGACACTGGAAGCT  
GCTGTGCTCCTTTCCGTTGGAACCGACAGGCACTGAGCATTCCCGACTCTCTGGCCGTCTGCCATTGT  
CTGTGGCTCATTCCCGGGTCTGTGCGCCTTGCCCGCTGCCTTGAGGAACACAGAGACAGGAGCCTTC  
GGTGGAGCCCCATTTGCCCTATCGCCACCCTCCTCCAGCCAGACACTGGTCTGAGCAGCGTCTCCTCG  
CCCTCGGAGCTGTGGATGGCACCTTTCCGTCACGTACGCTATTCTAGTGCCCCAGATGGCAGTCCCC  
CCCCTGCACCTCTGCCAGCCTCTGAGATGACTATGGAGGACATGGCCCCAGGCCAGCTTTCTCTGGTGT  
CCCAGAAGCCCCCTACTCCTCATGGACTATGAGGCTACCAACTCCAAGGGGCCCTCTCCTCCCTTCT  
GCCCTCCACCAGCTTCCAGATGATGGGGTGTCTCCAGAGGACGCTGACAGCCACAGGCTGTGGATGTGA  
TCCCGGTGGACATGATCTCACTAGCCAAGCAGATCATCGAAGCCACACCGGAGCGGATTAACAGAGAGGA  
CTTCGTGGGGCTGCCCGAGGCTGGAGCCTCAATGCGGGAGCGGACAGGGGCTGTGGGGCTCAGTGAGACC  
ATGTCTGGCTGGCCAGTACCTGGAGAATGTGGACATTTCCCCAGCTCAACCCCTCCCAGCGAACTGC  
CCTTTGAGCGAGGTGCCTGGCTGTCCCTCAGCACCCCTCCTGGCAGAGTTTCTCTGTCATCCACCAG  
TGGCAAGATGGAAGTGATTTTGCCTGCTGACACTATCAGATCAGGAGCAGCGGAACTGTATGAGGCT  
GCCCCAGTCAATCCAGCGCTGTTACCGGAAGTACAAGGGCCGGCGCTGAAGGAGCAGCAGGAGGTAGCAG  
CAGCTGTAATCCAGCGCTGTTACCGGAAGTACAAGCGAGCTGACCTGGATTGCACTTAAGTTTGCACCTA  
TAAGAAGATGACCCAGGCGGCCATCCTGATCCAGAGCAAGTTCCGAAGCTACTATGAACAGAAGCGATTT  
CAGCAGAGCCCGCAGCGGCTGTGCTCATCCAGCAGCACTACCGCTCCTACCGCCGAGGCCCGGCCCTC  
CCCACCGACTTCGGCCACCCTGCCTGCCCGCAACAAAGGCTCCTTTCTACCAAGAAGCAGGACCAGGC  
AGCCCGGAAGATCATGAGATTCTGCGGCGTCCCGACACAGGATGAGGGAACTGAAGCAGAACCAGGAG  
CTGGAAGGGCTTCCCAGCCGGACTGGCCACA

ACGCGTACGCGGCCGCTCGAG – GFP Tag – GTTTAA

**Protein Sequence:** >RG230674 representing NM\_001171168  
 Red=Cloning site Green=Tags(s)

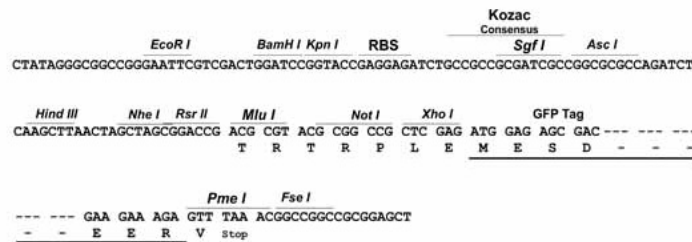
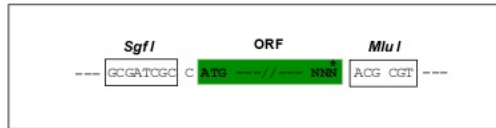
MGTDSPSPRPLRPGVTLPPGALTMNTKDTTEVAENSHHLKIFLPKLLLECLPRCPLLPPELRWNTNEEI  
 ASYLITFEKHDEWLSCAPKTRPQNGSIIILYNRKKVKYRKDGYLWKKRKDGKTTREDHMKLVQGMENPDI  
 VLVHYLVNPALED CGKGCSPIFCSISSDRREWLKWSREELLGQLKPMFHGIKWSCGNGTEEF SVEHLVQQ  
 ILDTHPTKPARTHACLCSGGLGSGSLTHKCSSTKHRIISPKEPRALTLT SIPAHPPPEPPLIAPLPP  
 ELPKAHTSPSSSSSSSGFAEPLIIRPSPPTSRGGSSRGGTAILLLTGLEQRAGGLTPTRHLAPQADPR  
 PMSLAVVVGTEPSAPPAPPSPAFDPDRFLNSPQRGQTYGGGQGVSPDFPEAEAAHTPCSALEPAAALEP  
 QAAARGPPQSVAGRRGNCFIQQDDSGEELKGHAAPPSPPPSPPPSPAPLEPSSRVGRGEALFGG  
 PVGASELEPFSLSSFPDLMGELISDEAPSIPATPQLSPALSTITDF SPEWSYPEGGVKVLITGPWTEAA  
 EHYSCVFDHIAVPASLVQPGVLR CYCPAHEVGLVSLQVAGREGPLSASVLF EYRARRFLSLPSTQLDWLS  
 LDDNQFRMSILERLEQMEKRMAEIAAAGQVPCQGPDAPPVQDEGQGPGEARVVVLVESMIPRSTWKGPE  
 RLAHGSPFRGMSLLHLAAAQGYARLIETLSQWRSVETGSLDLEQVDPLNVDHF SCTLPLMWACALGHLEA  
 AVLLFRWNRQAL SIPDSLGRPLSVAHSRGHVRLARCLEELQRQEPSVEPPFALSPSSSPDTGLSSVSS  
 PSELS DGTFSVTSAYSSAPDGSPPAPLPASEMTMEDMAPGQLSSGVPEAPLLLMDYEATNSKGPLSSLP  
 ALPPASDDGAAPEDADSPQAVDIPVDMISLAKQIIEATPERIKREDFVGLPEAGASMRERTGAVGLSET  
 MSWLASYLENVDHFPSSSTPPSEL PFERGLAVPSAPSWAEFLSASTSGKME SDFALLTLDHEQREL YEA  
 ARVIQTAFRKYGRRLKEQQEVA AAVIQRCYRKYQLTWIALKFALYKMTQAA ILIQSKFRSYEQKRF  
 QQSRRAAVLIQQHYRSYRRRPGPPHRTSATLPARNKGSFLTKKQDQAARKIMRFLRRCRHRMRELKQNQE  
 LEGLPQPLAT

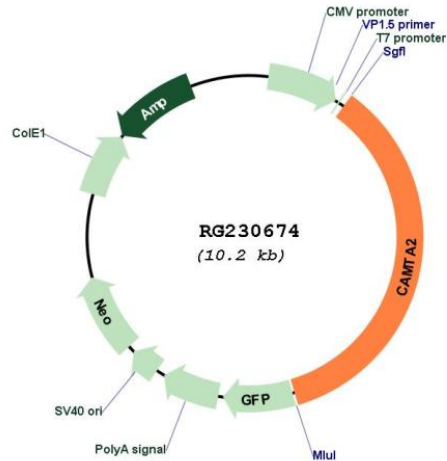
TRTRPLE - GFP Tag - V

**Restriction Sites:** SgfI-MluI

**Cloning Scheme:**

Cloning sites used for ORF Shutting:



**Plasmid Map:**


**ACCN:** NM\_001171168

**ORF Size:** 3603 bp

**OTI Disclaimer:** The molecular sequence of this clone aligns with the gene accession number as a point of reference only. However, individual transcript sequences of the same gene can differ through naturally occurring variations (e.g. polymorphisms), each with its own valid existence. This clone is substantially in agreement with the reference, but a complete review of all prevailing variants is recommended prior to use. [More info](#)

**OTI Annotation:** This clone was engineered to express the complete ORF with an expression tag. Expression varies depending on the nature of the gene.

**Components:** The ORF clone is ion-exchange column purified and shipped in a 2D barcoded Matrix tube containing 10ug of transfection-ready, dried plasmid DNA (reconstitute with 100 ul of water).

**Reconstitution Method:**

1. Centrifuge at 5,000xg for 5min.
2. Carefully open the tube and add 100ul of sterile water to dissolve the DNA.
3. Close the tube and incubate for 10 minutes at room temperature.
4. Briefly vortex the tube and then do a quick spin (less than 5000xg) to concentrate the liquid at the bottom.
5. Store the suspended plasmid at -20°C. The DNA is stable for at least one year from date of shipping when stored at -20°C.

**RefSeq:** [NM\\_001171168.2](#)

**RefSeq Size:** 4782 bp

**RefSeq ORF:** 3606 bp

**Locus ID:** 23125

**UniProt ID:** [O94983](#)

**Cytogenetics:** 17p13.2

**Gene Summary:**

The protein encoded by this gene is a member of the calmodulin-binding transcription activator protein family. Members of this family share a common domain structure that consists of a transcription activation domain, a DNA-binding domain, and a calmodulin-binding domain. The encoded protein may be a transcriptional coactivator of genes involved in cardiac growth. Alternate splicing results in multiple transcript variants.[provided by RefSeq, Jan 2010]