

Product datasheet for **RG230670**

IQSEC3 (NM_001170738) Human Tagged ORF Clone

Product data:

Product Type: Expression Plasmids
Product Name: IQSEC3 (NM_001170738) Human Tagged ORF Clone
Tag: TurboGFP
Symbol: IQSEC3
Mammalian Cell Selection: Neomycin
Vector: pCMV6-AC-GFP (PS100010)
E. coli Selection: Ampicillin (100 ug/mL)
ORF Nucleotide Sequence: >RG230670 representing NM_001170738
Red=Cloning site Blue=ORF Green=Tags(s)

TTTTGTAATACGACTCACTATAGGGCGGCCGGAATTCGTCGACTGGATCCGGTACCGAGGAGATCTGCC
GCC**CGATCGCC**

ATGGAGAGCCTGCTGGAGAATCCGGTGCAGCCGCTGCTACCTCAAGGAGCTCACGGCCATCGTGCAGA
ACCAGCAGAGCCTCATCCACACCCAGCGAGAGCGTATCGACGAGCTGGAGCGGGCTGGACGAGCTGAG
CGCTGAGAACCGCAGCCTGTGGGAGCACCAGCAGCTGTGCAAGCCAGCCTCCGCCCGGGCTCGTCCCC
CCGTATCGGCCCGCTGCCGGCCGCTCCGGCCACCGCTCCTGCCGCCGCCAGGGCCAGAACCTC
TCCAGGACCAAGGACAGCGCTCAGCAGCCGCGCCGATCCCGCCCGGATCGGCCCGCGTCCAGCACA
CGGACAGCTCCTGGAGCAGCCCCAGCGGGCCCTGGCAGCAGGGCTCACACACCCAGTCGCCCCACAAG
CATCTGGGGACACAAGGGCCGTGACTGACAAGGAGAAGGAGCGTCCCCCGAGTTGCTGCGCTGCTGCCG
GAGCCCTCCTTACGACAAAATCCCCCTCCGCCCTCGGCAAGGGCGTCTGAGCAGGAGACCTGAGAATGA
GACCGTGTGCACCAGTTCTGCTGCCAGCCGCGGACGCTGCTCCGACCTGGCTCCCAAAGTGATGGC
TCCTGCACCCAGGCCGTGGGGCATGGAGACTCCGTGGTGGCAGCGGGCGGTGGCAGCCGGCAGAC
CCAGTGCCCATGCCCGAAGGCTCAAGCCAGGAGCTGCAGGAGGAGGAGGAGCGGCCGGGGCAGGGGC
TGCTCCCAAGGGCTGGCCCCAGCACAAGGCCCTCCCCGGCCGGCAGCAGCTGCCCTGGCGACGGCG
CTGTGCCCCACGCCCTGCCGCTCCGATTACGAACTCTCCCTTGACCTAAAGAATAAACAGATTGAAA
TGCTAGAACATAAGTACGGCGGTCACTGGTGTCCCGGCCGCGCCCTTGACCATCCAAACCGCCTTCCG
CCAATACCAGCTCAGCAAGAACTTCGAGAAAATCCGCAACTCGCTTCTGGAGAGCCGCTGCCACGGCGG
ATCTCCCTGCGCAAGGTGCGGTCAACCCAGCGCCGAGAGCCTGGCGGCCGAGAAAGCGCTCATGGAGGGCT
ACGGCCTCGTGGGGCTGCCGCTGGTGGCTCGCCCTCCCTGCCGCCACCTTCGACAGGACCCCTCACCGA
GCTGGAGGACTCCTTACCGAGCAGGTGCAATCCCTGGCCAAAGTCCATCGACGACGCGCTCAGCAGTGG
AGCCTCAAGACCATGTGCTCCCTGCGGGAGAGTGGCGTTACCAGCTCCACCAGGCCCTGCAGGCGGCCG
CGGGCCCCCAGGCCTGGAGGCCGAGGGCGGGCGCCGGAGAGCGCGGGCCCCGGGCCGGGGATGACGC
CGCGGAGACCCCGCCCTGCCCGGCCACAGCGGGACCCTCATGATGGCTTTCCGGGACGTCAAGGTG
CAGATCGCCAACCAAGAACATATCCGTCTCCTCCTCCACGCTCTGTCCGGTGGCCAACTGCCTGGCGCTC
AGACGGTCCAGGCCCCCGCAGAGCCCGGGCGGGCAAGGCCGAGCAGGGCGAGACCTCTGGCGGGAGGC



[View online »](#)

```

CCCGAAGCCCCCGCCGTGGGCCGGGAGGACGCGTCAGCCGAGGACTCATGCGCAGAGGCTGCGGCTAGT
GGGGCGGCGGATGGGGCCACAGCCCCAAAACAGAGGAGGAAGAGGAGGAGGAGACGGCGGAGGTGG
GGAGAGGGGCGGAGGCGGAGGCAGGCGACTTGGAGCAGCTGAGCAGCAGCAGCAGCTCCACCAAGTCCGC
CAAGTCAGGCTCGGAGGCGTCCGCCTCCAGGACGCCCTGCAGGCCATGATCCTGAGCCTGCCG
CGCTACCACTGCGAGAACCAGCCAGCTGCAAGTCGCCACGCTCTCCACCGACACCCTGCGCAAGCGGC
TCTACCGCATCGGCCTCAACCTTTCAACATAAACCCCGACAAGGGCATCCAGTTCTGATCTCACGCGG
CTTACCCCGACACCCCATCGGTGTGGCCATTTCCTCTCCAGCGAAAGGGCCTGACCCGCCAGATG
ATTGGAGAGTTCTGGGCAACAGCAAGAAGCAGTTCAACCCGACGCTGCTGGACTGCGTGGTGGACGAGA
TGGACTTCTCCAGCATGGAGCTGGACGAGGCCCTGCGCAAGTTCCAGGCACACATCCGTGTGACGGGGA
GGCTCAGAAGGTGGAGCGGCTCATTGAGGCCTTACGCCAGCGCTACTGCATGTGCAACCCCGAAGTGGT
CAGCAGTTCACAACCCCGACACCATCTTCATCTCGCCTTCGCCATCATCTCTCAACACCGACATGT
ACAGCCCCAACATCAAGCCTGACCGGAAGATGATGCTGGAGGACTTATCCGAAACCTTCGAGGTGTGA
CGATGGCGCTGACATCCCAGGGAGCTGGTGGTAGGCATCTATGAGAGGATACAGCAGAAGGAGCTCAAG
TCCAATGAGGACCACGTACGTACGTACCAAGGTGGAGAAGTCCATTGTGGCATGAAGACAGTGTGT
CCGTGCCACCAGCCGCTGGTGTGCTGCAGCCGGCTCTTCGAGGTGACGGATGTGAACAAGCTGCAGAA
GCAGGCAGCGCATCAGAGGGAGGTTCCTCTTCAATGACCTGCTGGTATTCTCAAACCTTTCGCCGAAG
AAGAAGAGCTCCTCCACGTACACCTTTTCAAGTCAGTTGGCCTGCTGGGCATGCAGTTCACGCTCTTTG
AGAACGAGTATTACTCTCATGGCATCACACTGGTGACCCCGCTCTCGGGCTCCGAGAAGAAGCAGGTGCT
GCATTTCTGTGCCTGGGCTCGGACGAGATGCAGAAGTTCGTGGAGGACCTGAAGGAGTCCATTGCTGAG
GTGACGGAGCTGGAGCAGATCCGAATAGAGTGGGAGCTGGAGAAGCAGCAGGGAACAAAGACACTCTCT
TCAAGCCCTGCGGAGCCAGGGGACCCACAGTCAAAGCAAGGATCGCCGACAGCCAAAAGGGAAGCCGC
GCTCAGGGAGAGCCGGCGGAGAGCAGCGGTGGAGGTGTCAATTCACAACAGGCTTCAAACGTCCCAGCAC
AACTCCGGGCTGGGGCCGAGAGGGGAGCGCCGTGCCGCCGACAGCTGCAGCTAGCCCCCGGAGAC
AGCAGACCCACCACTGCCCGCCGCCACCCACGCCCCCGGGCACCTGGTGCAGTGCAGCAAAATTGT
CAAGGTCAATTGTCTGGACAAGCCCTGCCTGGCCCGCATGGAGCCCTGCTGAGCCAGGCTCTCTCTGC
TACACCTCGTCTCTGACTCTGCGCTCCACACCCCTGGCGGTCCCGGCTCTCCGGTCAAGGTCA
CCCACCAGCTCCGCTGCCCGCCGCCACCCCTACAACCACCTCACCAGTTCTGTCCCCAGGCTC
CCTGCTGCACGGGACCCTACTCCAGTGGCTCAAGGAGCCTGGT

```

AGCGGACCGACGCGTACGCGGCCGCTCGAG - GFP Tag - GTTTAA

Protein Sequence:

>RG230670 representing NM_001170738
 Red=Cloning site Green=Tags(s)

```

MESLLENPVRVAVLYLKELTAIVQNQQSLIHTQRERIDELERRLDEL SAENRSLWEHQQLLQAQPPPLV
PSSAPLPAAPATAPAAAARAQEPLDQDQQRSAAPHPAPDRPPRQHGGQLLEQPQRGPGSRAHTPQSPHK
HLGTQGAVIDKEKERPPSCCAAAGALLQHKSPSALGKGLVSRPENETVLHQFCCPAADACSDLASQSDG
SCTQAGGGMEDSVVAAAAVAAGRPSAHAPKAQAQELQEEEEERPGAGAASPRAGPQHKASPRGRQPALATA
LCPHAPAASDYELSLDLKNKQIEMLEHKYGGHLVSRRAACTIQTAFRQYQLSKNF EKIRNSLLESRLPRR
ISLRKVRSPTAESLAAEKALMEGYGLVGLPLVRSPLPPTFAGTLTELEDSFTEVQVQSLAKSIDDALSTW
SLKTMCSLRESGAYQLHQALQAAAGPPGLEAEGRAPESAGPGPGDDAAETPGLPPAHSGLMMAFRDVTV
QIANQNISVSSSTALSVANCLGAQTVQAPAEPAAGKAEQGETSGREAPEAPAVGREDAEASCAEAAAAS
GAADGATAPKTEEEEEEEETAEVGRGAEAEAGDLEQLSSSTSTKSASKGSEASASASKDALQAMILSLP
RYHCENPASCKSPTLSTDLRKRLYRIGLNLFNINPKGIQFLISRGFIPDTPIGVAHFLLQRKGLSRQM
IGEF LGNSKKQFNRDVLDVVDMDFSMELDEALRKFQAHIRVQGEAQKVERLIEAFSQR YCMCNPEVV
QQFHNPDITIFILAF AII LLNTDMYSPNIKPD RKMMLEDFIRNLRGVDDGADIPREL VVGIYERIQKELK
SNEDHVTVYTKVEKSIVGMKT VLSVPHRRLVCCSRLFEVTDVNKLQKQAAHQREVFLFNDLLVILKCPK
KKSSSTYTFCKSVGLLGMQFQLFENEYSHGITLVTPLSGSEKKQVLFHFCALGSDQM KFVEDLKEISAE
VTELEQIRIEWELEKQGTKLSFKPCGAQDPQSKQGSPTAKREAALRERPAESTVEVSIHNRLQTSQH
NSGLGAERGAPVPPDLQSPPRQTPPLPPPPPTPPGTLVQCQQIVKVI VLDPKPLARMEPLLSQALSC
YTSSSDSCGSTPLGGPGSPVKVTHQPPLPPPPPPYNHHPHF CPPGSL LHGRYSSGSRSLV

```

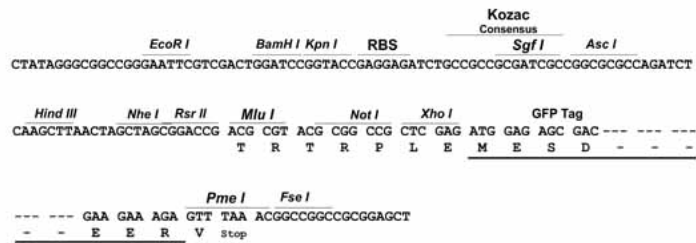
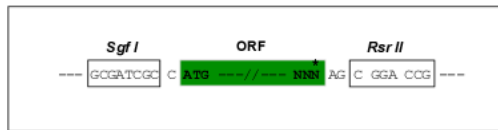
SGPTRRRLE - GFP Tag - V

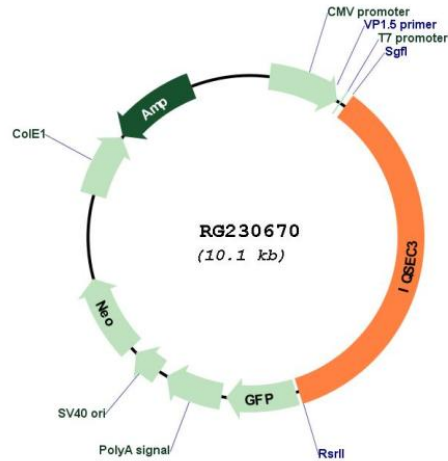
Restriction Sites:

SgfI-RsrII

Cloning Scheme:

Cloning sites used for ORF Shuttling:



Plasmid Map:


ACCN: NM_001170738

ORF Size: 3546 bp

OTI Disclaimer: The molecular sequence of this clone aligns with the gene accession number as a point of reference only. However, individual transcript sequences of the same gene can differ through naturally occurring variations (e.g. polymorphisms), each with its own valid existence. This clone is substantially in agreement with the reference, but a complete review of all prevailing variants is recommended prior to use. [More info](#)

OTI Annotation: This clone was engineered to express the complete ORF with an expression tag. Expression varies depending on the nature of the gene.

Components: The ORF clone is ion-exchange column purified and shipped in a 2D barcoded Matrix tube containing 10ug of transfection-ready, dried plasmid DNA (reconstitute with 100 ul of water).

- Reconstitution Method:**
1. Centrifuge at 5,000xg for 5min.
 2. Carefully open the tube and add 100ul of sterile water to dissolve the DNA.
 3. Close the tube and incubate for 10 minutes at room temperature.
 4. Briefly vortex the tube and then do a quick spin (less than 5000xg) to concentrate the liquid at the bottom.
 5. Store the suspended plasmid at -20°C. The DNA is stable for at least one year from date of shipping when stored at -20°C.

RefSeq: [NM_001170738.2](#)

RefSeq Size: 6976 bp

RefSeq ORF: 3549 bp

Locus ID: 440073

UniProt ID: [Q9UPP2](#)

Cytogenetics: 12p13.33
Protein Pathways: Endocytosis
Gene Summary: Acts as a guanine nucleotide exchange factor (GEF) for ARF1.[UniProtKB/Swiss-Prot Function]