

Product datasheet for **RG230660**

PTCH2 (NM_001166292) Human Tagged ORF Clone

Product data:

Product Type:	Expression Plasmids
Product Name:	PTCH2 (NM_001166292) Human Tagged ORF Clone
Tag:	TurboGFP
Symbol:	PTCH2
Synonyms:	PTC2
Mammalian Cell Selection:	Neomycin
Vector:	pCMV6-AC-GFP (PS100010)
E. coli Selection:	Ampicillin (100 ug/mL)
ORF Nucleotide Sequence:	>RG230660 representing NM_001166292 Red=Cloning site Blue=ORF Green=Tags(s)

TTTTGTAATACGACTCACTATAGGGCGGCCGGAATTCGTCGACTGGATCCGGTACCGAGGAGATCTGCC
GCC**CGATCGCC**

ATGACTCGATCGCCGCCCTCAGAGAGCTGCCCCGAGTTACACACCCAGCTCGAACCGCAGCACCCC
AGATCCTAGCTGGGAGCCTGAAGGCTCCACTCTGGCTTCGTGCTTACTCCAGGGCTGCTTCTCTCT
GGGATGCGGGATCCAGAGACATTGTGGCAAAGTCTTCTGGGACTGTGGCCTTTGGGGCCCTGGCA
TTAGTCTCCGCATGGCCATTATTGAGACAACTTGAACAGCTCTGGTAGAAGTGGGCAGCCGGTGA
GCCAGGAGCTGCATTACACCAAGGAGAAGCTGGGGGAGGAGGCTGCATACACCTCTCAGATGCTGATACA
GACCGCACGCCAGGAGGGAGAGAATCCTCACACCCGAAGCACTTGGCTCCACCTCCAGCAGCCCTC
ACTGCCAGTAAAGTCAAAGTATCACTCTATGGGAAGTCTGGGATTTGAACAAAATCTGCTACAAGTCAG
GAGTTCCTTATTGAAAATGGAATGATTGAGCGGATGATTGAGAAGCTGTTCCGTGCGTGATCCTCAC
CCCCCTCGACTGCTTCTGGGAGGGAGCCAACTCCAAGGGGGCTCCGCCTACCTGCCCGGCCGCCGGAT
ATCCAGTGGACCAACCTGGATCCAGAGCAGCTGCTGGAGGAGCTGGTCCCTTTCCTCCCTTGAGGGCT
TCCGGGAGCTGCTAGACAAGGCACAGGTGGCCAGGCCTACGTGGGGCGGCCCTGTCTGCACCCTGATGA
CCTCCACTGCCACCTAGTGCCCCAACCATCACAGCAGGCAGGCTCCCAATGTGGCTCACGAGCTGAGT
GGGGCTGCCATGGCTTCTCCACAAATTCATGCACTGGCAGGAGGAATTGCTGGGAGGCATGGCCA
GAGACCCCAAGGAGAGCTGCTGAGGGCAGAGGCCCTGCAGAGCACCTTCTTGTGATGAGTCCCGCCA
GCTGTACGAGCATTTCGGGGTACTATCAGACACATGACATTGGCTGGAGTGAGGAGCAGGCCAGCACA
GTGCTACAAGCCTGGCAGCGCGCTTTGTGACGCTGGCCAGGAGGCCCTGCCTGAGAAGCTTCCACAGC
AGATCCATGCCTTCTCCTCCACCACCTGGATGACATCCTGCATGCGTCTCTGAAGTCAGTGTGCCCG
TGTGGTGGGAGGCTATCTGCTCATGCTGGCCTATGCCTGTGTGACCATGTGCGGTGGGACTGCGCCAG
TCCAGGGTTCGGTGGGCCTTGGCGGGTACTGCTGGTGGCCCTGGCGGTGGCCTCAGGCCTTGGGCTCT
GTGCCCTGCTCGGCATCACCTTCAATGCTGCCACTACCCAGGTGCTGCCCTTCTTGGCTCTGGGAATCGG
CGTGGATGACGATTCTGCTGGCGCATGCCTTACAGAGGCTCTGCCTGGCACCCCTCTCCAGGAGCGC



[View online >](#)

ATGGGCGAGTGTCTGCAGCGCACGGGCACCAGTGTCTACTCACATCCATCAACAACATGGCCGCTTCC
TCATGGCTGCCCTCGTTCCCATCCCTGCGCTGCGAGCCTTCTCCCTACAGGCGGCATAGTGGTTGGCTG
CACCTTTGTAGCCGTGATGCTTGTCTTCCAGCCATCCTCAGCCTGGACCTACGGCGGCCACTGCCAG
CGCCTTGATGTGCTCTGCTGCTTCTCCAGTCCCTGCTCTGCTCAGGTGATTAGATCCTGCCCCAGGAGC
TGGGGGACGGGACAGTACCAGTGGGCATTGCCACCTCACTGCCACAGTTCAAGCCTTTACCCACTGTGA
AGCCAGCAGCCAGCATGTGGTCACCATCCTGCCTCCCCAAGCCCACCTGGTGCCCCACCTTCTGACCCA
CTGGGCTCTGAGCTCTTCCAGCCCTGGAGGGTCCACACGGGACCTTCTAGGCCAGGAGGAGAGACAAGGC
AGAAGGCAGCCTGCAAGTCCCTGCCTGTGCCGCTGGAATCTTGCCCATTTGCCCCGCTATCAGTTTGC
CCCCTTGTGCTCCAGTACATGCTAAGGCCATCGTGCTGGTGCTCTTGGTGCTCTTCTGGGCCTGAGC
CTCTACGGAGCCACCTTGGTGCAAGACGGCCTGGCCCTGACGGATGTGGTGCTCGGGGACCAAGGAGC
ATGCCCTTCTGAGCGCCAGCTCAGGTACTTCTCCCTGTACGAGGTGGCCCTGGTGACCCAGGGTGGCTT
TGACTACGCCACTCCCAACGCGCCCTTTGATCTGCACCAGCGCTTCAAGTCCCTCAAGGCGGTGCTG
CCCCACCGGCCACCCAGGCACCCCGCACCTGGCTGCACTATTACCGCAACTGGTACAGGAATCCAGG
CTGCCCTTGACCAGGACTGGGCTTCTGGGCGCATACCCGCCACTCGTACCGCAATGGCTCTGAGGATGG
GGCCCTGGCCTACAAGCTGCTCATCCAGACTGGAGACGCCAGGAGCCTCTGGATTTAGCCAGCTGACC
ACAAGGAAGCTGGTGGACAGAGAGGGACTGATTCCACCCGAGCTTCTACATGGGGCTGACCGTGTGGG
TGAGCAGTGACCCCTGGGTCTGGCAGCCTCACAGGCCAACTTCTACCCCCACCTCCTGAATGGCTGCA
CGACAAATACGACACCACGGGGGAGAACCTTCGCATCCCGCCAGCTCAGCCCTTGGAGTTTGCCAGTTC
CCCTTCTGCTGCGTGGCCTCCAGAAGACTGCAGACTTTGTGGAGGCCATCGAGGGGGCCCGGGCAGCAT
GCGCAGAGGGCCGAGGCTGGGGTGCACGCCTACCCAGCGGCTCCCCCTTCTCTTCTGGGAACAGTA
TCTGGGCTGCGGCGTGCTTCTGCTGGCCGTGCTGATCCTGCTGGTGTGCACTTCTCTGCTGTGCT
CTGCTGCTCCTCAACCCCTGGACGGCTGGCCTCATAGTGTGCTGCTGCTGGCGATGATGACAGTGAAGTCT
TTGGTATCATGGTTTCTGGGCATCAAGTGTGAGTGCCATCCCCGTGGTGATCCTTGTGGCCTCTGTAGG
CATTGGCGTTGAGTTCACAGTCCAGTGGCTCTGGGCTTCTGACCACCCAGGGCAGCCGGAACCTGCGG
GCCGCCATGCCCTTGAGCACACATTTGCCCCGTGACCGATGGGGCCATCTCCACATTGCTGGGTCTGC
TCATGCTTGTGGTTCCCACTTTGACTTATTGTAAGTACTTCTTTGCGGCGTGACAGTGCTCACGCT
CCTGGGCCTCCTCCATGGACTCGTGTGCTGCTGCTGTGCTGTCCATCCTGGGCCCGCCGAGAGGTG
ATACAGATGTACAAGAAAGCCAGAGATCCTGAGTCCACCAGCTCCACAGGGAGGCGGGCTTAGGCCCG
AGGAGATC

ACGCGTACGCGGCCGCTCGAG - GFP Tag - GTTTAA

Protein Sequence: >RG230660 representing NM_001166292
 Red=Cloning site Green=Tags(s)

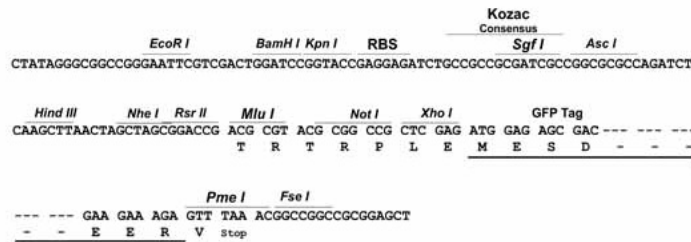
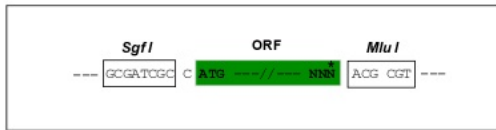
MTRSPPLRELPPSYTPPARTAAPQILAGSLKAPLWLRAYFQGLLFSLGGCIQRHCGKVLFLGLLAFGALA
 LGLRMAIIETNLEQLWVEVGSRSVSELHYTKEKLGEEAAYTSQMLIQATARQEGENILTPEALGLHLQAAL
 TASKVQVSLYKGSWDLNKICYKSGVPLIENGMIERMIEKLFPCVILTPLDCFWEAKLQGG SAYLPGRPD
 IQWTNLDPEQLLEELGPFASLEGFRELLDKAQVQAYVGRPCLHPDDLHCPPSAPNHHSRQAPNVAHEL
 GGCHGF SHKFMHWQEELLLGGMARDPQGE LLRAEALQSTFLLMSPRQLYEHFRGDYQTHDIGWSEEQAST
 VLQAWQRRFVQLAQEALPENASQQIHAFSSTLDDILHAFSEVSAARVVGYYLLMLAYACVTMLRWDCAQ
 SQGSVGLAGVLLVALAVASGLGLCALLGITFNAATTQVLPFLALGIGVDDVFLLAHAFTEALPGTPLQER
 MGECLQRTGTSVVLTSINNMAAFLMAALVIPALRAFSLQAAIIVGCTFVAVMLVFPAILSLDLRRRHCCQ
 RLDVLCFFSSPCSAQVIQILPQELGDGTVPGIAHLTATVQAFTHCEASSQHVVITLPPQAHVPPPSDP
 LGSELSFGGSTRDLLGQEEETRQKAACKSLPCARWNLAHFARYQFAPLLLQSHAKAIVLVLFGALLGLS
 LYGATLVQDGLALTDVVPRGTKEHAFLSAQLRYFSLYEVALVTQGGFDYAHSQRALFDLHQRFSLLKAVL
 PPPATQAPRTWLHYRNLQGIQAAFDQDASGRITRHSYRNGSEDGALAYKLLIQTGDAQEPLDFSQLT
 TRKLV DREGLIPPELFYMGLTVWVSSDPLGLAASQANFYPPPEWLHDKYDTTGENLRIPPAQPLEFAQF
 PFLLRGLQKTADFVEAIEGARAACAEAGQAGVHAYPSGSPFLFWEQYLGRRCFLLAVCILLVCTFLVCA
 LLLLNPWTAGLIVLVLAMMTVELFGIMGFLGIKLSAIPVVILVASVGIGVEFTVHVALGFLTQGSRLR
 AAHALEHTFAPVTDGAISTLLGLLMLAGSHDFIVRYFFAALTVLTLGLLHGLVLLPVLLSILGPPPEV
 IQMYKESPEILSPPAPQGGGLRPEEI

TRTRPLE - GFP Tag - V

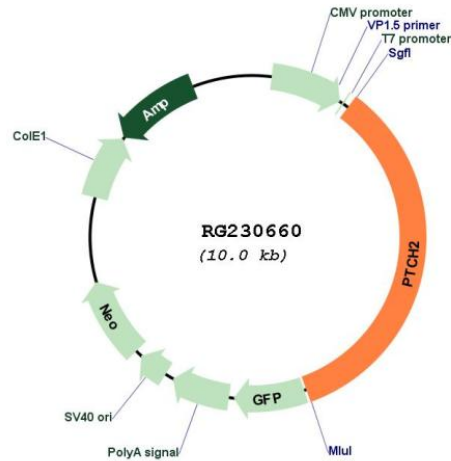
Restriction Sites: SgfI-MluI

Cloning Scheme:

Cloning sites used for ORF Shuttling:



Plasmid Map:



ACCN: NM_001166292

ORF Size: 3438 bp

OTI Disclaimer: The molecular sequence of this clone aligns with the gene accession number as a point of reference only. However, individual transcript sequences of the same gene can differ through naturally occurring variations (e.g. polymorphisms), each with its own valid existence. This clone is substantially in agreement with the reference, but a complete review of all prevailing variants is recommended prior to use. [More info](#)

OTI Annotation: This clone was engineered to express the complete ORF with an expression tag. Expression varies depending on the nature of the gene.

Components: The ORF clone is ion-exchange column purified and shipped in a 2D barcoded Matrix tube containing 10ug of transfection-ready, dried plasmid DNA (reconstitute with 100 ul of water).

Reconstitution Method:

1. Centrifuge at 5,000xg for 5min.
2. Carefully open the tube and add 100ul of sterile water to dissolve the DNA.
3. Close the tube and incubate for 10 minutes at room temperature.
4. Briefly vortex the tube and then do a quick spin (less than 5000xg) to concentrate the liquid at the bottom.
5. Store the suspended plasmid at -20°C. The DNA is stable for at least one year from date of shipping when stored at -20°C.

RefSeq: [NM_001166292.1](#), [NP_001159764.1](#)

RefSeq Size: 4298 bp

RefSeq ORF: 3441 bp

Locus ID: 8643

UniProt ID: [Q9Y6C5](#)

Cytogenetics: 1p34.1

Protein Families:	Druggable Genome, ES Cell Differentiation/IPS, Transmembrane
Protein Pathways:	Basal cell carcinoma, Hedgehog signaling pathway, Pathways in cancer
Gene Summary:	This gene encodes a transmembrane receptor of the patched gene family. The encoded protein may function as a tumor suppressor in the hedgehog signaling pathway. Alterations in this gene have been associated with nevoid basal cell carcinoma syndrome, basal cell carcinoma, medulloblastoma, and susceptibility to congenital macrostomia. Alternatively spliced transcript variants have been described.[provided by RefSeq, Oct 2009]