

Product datasheet for **RG230656**

AREB6 (ZEB1) (NM_001174096) Human Tagged ORF Clone

Product data:

Product Type:	Expression Plasmids
Product Name:	AREB6 (ZEB1) (NM_001174096) Human Tagged ORF Clone
Tag:	TurboGFP
Symbol:	ZEB1
Synonyms:	AREB6; BZP; DELTAEF1; FECD6; NIL2A; PPCD3; TCF8; ZFHEP; ZFH1A
Mammalian Cell Selection:	Neomycin
Vector:	pCMV6-AC-GFP (PS100010)
E. coli Selection:	Ampicillin (100 ug/mL)
ORF Nucleotide Sequence:	>RG230656 representing NM_001174096 Red=Cloning site Blue=ORF Green=Tags(s)

TTTTGTAATACGACTCACTATAGGGCGGCCGGAATTCGTCGACTGGATCCGGTACCGAGGAGATCTGCC
GCC**CGATCGCC**

ATGGCGGATGGCCCCAGGTGTAAGCGCAGAAAGCAGGCGAACCCGCGGCAATAACGTTACAAATTATA
ATACTGTGGTAGAAACAAATTCAGATTCAGATGATGAAGACAACTGCATATTGTGGAAGAAGAAAGTGT
TACAGATGCAGCTGACTGTGAAGGTGTACCAGAGGATGACCTGCCAACAGACCAGACAGTGTACCAGGG
AGGAGCAGTGAAGAGAAGGGAATGCTAAGAACTGCTGGGAGGATGACACAGGAAAGGAAGGCAAGAAA
TCCTGGGGCCTGAAGCTCAGGCAGATGAAGCAGGATGTACAGTAAAAGATGATGAATGCGAGTCAGATGC
AGAAAATGAGCAAACCATGATCCTAATGTTGAAGAGTTTCTACAACAACAAGACTGCTGTCATTTTT
CCTGAGGCACCTGAAGAGGACCAGAGGCAGGGCACACCAGAAGCCAGTGGTCATGATGAAAATGGAACAC
CAGATGCATTTTTACAATTACTCACCTGTCCATATTGTGATAGAGGCTATAAACGCTTTACCTCTCTGAA
AGAACACATTAATATCGTCATGAAAAGAATGAAGATAACTTTAGTTGCTCCCTGTGCAGTTACACCTTT
GCATACAGAACCAACTGAACGTCACATGACATCACATAAATCAGGAAGAGATCAAAGACATGTGACGC
AGTCTGGGTGTAATCGTAAATTCAAATGCACTGAGTGTGAAAAGCTTTCAAATACAAACATCACCTAAA
AGAGCACTTAAGAATTCACAGTGGAGAGAAGCCATATGAATGCCAAACTGCAAGAAACGCTTTTCCCAT
TCTGGCTCCTATAGCTCACACATAAGCAGTAAGAAATGTATCAGCTTGATACCTGTGAATGGGCGACCAA
GAACAGGACTCAAGACATCTCAGTGTCTTACCAGTCTCTTTACGATCACCAGGAGTCCACACAGACC
ACAGATACGGCAAAGATAGAGAATAAACCCCTTCAAGAACAACCTTTCTGTTAACCAAATTAACCTGAA
CCTGTGGATTATGAATCAAACCATAGTGGTTGCTTCAGGAATCAACTGTTCAACCCCTTTACAAAATG
GGGTTTTCACTGGTGGTGGCCATTACAGGCAACCAGTTCTCCTCAGGGCATGGTGAAGCTGTTGTTCT
GCCAACAGTTGGTTGGTGTCTCCATAAGTATCAATTTAAGTATTCAGAATGTACTTAAAGTGCGG
GTAGATGGTAATGTAATAAGGCAAGTGTGGAGAATAATCAAGCCAATCTGCATCCAAAGAACAAGAAA
CAATCAATGCTTACCCATACAACAAGGTGGCCATTCTGTTATTTACGCCATCAGTCTTCTTTGGTTGA
TCAAGATGGAACAACCAAATTATCATCAACTACAGTCTTGAGCAGCCTAGCCAACCTCAAGTTGTTCTCT



[View online »](#)

CAAAATTTAAAAAAGAAAATCCAGTCGCTACAAACAGTTGTAAGTAAAAAGTAAAGTTACCAGAAGATCTTA
 CTGTTAAGTCTGAGAAGGACAAAAGCTTTGAAGGGGGGGTGAATGATAGCACTTGTCTTCTGTGTGATGA
 TTGTCCAGGAGATATTAATGCACCTCCAGAATTAAGCACTATGACCTAAAGCAGCCTACTCAGCCTCT
 CCACTCCCTGCAGCAGAAGCTGAGAAGCCTGAGTCCTCTGTTTCATCAGCTACTGGAGATGGCAATTTGT
 CTCCTAGTCAGCCACCTTTAAGAACCTTTGTCTCTCTAAAAGCATATTATGCTTTGAATGCACAACC
 AAGTGCAGAAGAGCTCTCAAAAATTGCTGATTTCAGTAAACCTACCCTGGATGTAGTAAAAAGTGGTTT
 GAAAAGATGCAAGCTGGACAGATTTCAAGTCAGTCTTCTGAACCATCTTCTCCTGAACCCAGGCAAGTAA
 ATATCCCTGCCAAGAACAATGATCAGCCTCAATCTGCAAATGCAAATGAACCCAGGACAGCAGTAAA
 TCTACAAAGTCCCTTTGAAGATGACTAACTCCCGAGTTTTACCAGTGGGATCAACCAATGTTTCCAGA
 AGTAGTACACCATCCCCATCACCTCTAAACCTTTCCTCATCCAGAAAATACACAGGGTTACTTGTACACAG
 CTGAGGGTGCACAAGAAGAGCCACAAGTAGAACCTCTTGATCTTTCCTACTACCAAGCAACAGGGAGAATT
 ATTAGAAAGGTCAACTATCACTAGTGTACCAGAACAGTGTATTCTGTCCAGGAAGAACCCTTGAAC
 TTGCTTTCGCAAAAAGGAGCCACAAAAGGACAGTTGTGTACAGACTCAGAACCAGTTGTAATGTAA
 TCCCACCAAGTGCCAACCCATAAATATCGCTATACCTACAGTCACTGCCAGTTACCCACAATCGTGGC
 CATTGCTGACCAGAACAGTGTTCATGCTTAAGAGCGCTAGCTGCCAATAAGCAAACGATTCTGATTCCC
 CAGGTGGCATAACCTACTCAACTACGGTCAGCCCTGCAGTCCAAGAACCACCTTGAAAGTGATCCAGC
 CAAATGGAAATCAGGATGAAAGACAAGATACTAGCTCAGAAGGAGTATCAAATGTAGAGGATCAGAAATGA
 CTCTGATTCTACACCGCCAAAAAGAAAATGCGGAAGACAGAAAATGGAATGTATGCTTGTGATTGTGT
 GACAAGATATTCAAAAGAGTAGTTCAATTATTGAGACATAAATATGAACACACAGGTAAGAACCTCATG
 AGTGTGGAATCTGTAAGGAGCATTAAACACAAAACATCATTTGATTGAACACATGCGATTACATTCTGG
 AGAAAAGCCCTATCAATGTGACAAATGTGGAAGCGCTTCTCACACTCTGGGTCTATTCTCAACACATG
 AATCATCGCTACTCTACTGTAAGAGAGAAGCGGAAGAACGTGACAGCACAGAGCAGGAAGAGGACAGGGC
 CTGAAATCCTCTCGAATGAGCACGTGGGTGCCAGGGCTCTCCCTCACAGGGCGACTCGGACGAGAGAGA
 GAGTTTGACAAGGGAAGAGGATGAAGACAGTGAAGGAGGAAAGAGGAGGAGGATAAAGAGATGGAAGAA
 TTGCAAGGAAGAAAAGAATGTGAAAAACCAAGGGGATGAGGAAGAGGAGGAGGAGGAGGAAGAAGTGG
 AAGAAGAAGAGGTAGAAGAGGCAGAGAATGAGGGAGAAGAAGCAAAAAGTGAAGGTCTGATGAAGGATGA
 CAGGGCTGAAAGTCAAGCAAGCAGCTTAGGACAAAAGTAGGCGAGAGTAGTGAGCAAGTGTCTGAAGAA
 AAGACAAATGAAGCC

ACGCGTACGCGGCCGCTCGAG - GFP Tag - GTTTAA

Protein Sequence:

>RG230656 representing NM_001174096
 Red=Cloning site Green=Tags(s)

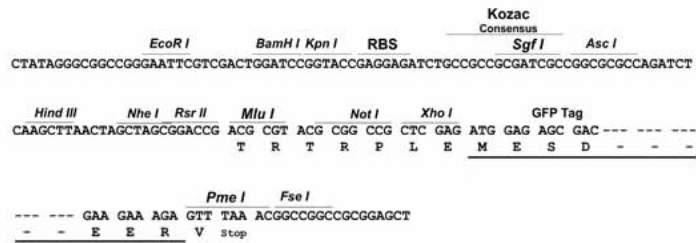
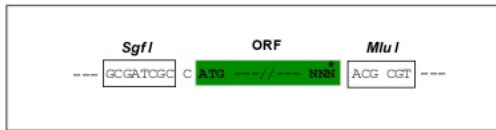
MADGPRCKRRKQANPRRNNVTNYNTVVETNSDSDDEDKLHIVEEESVTDAAADCEGVPEDDLPTDQTVLPG
 RSSEREGNAKNCWEDDTGKEGQEILGPEAQADEAGCTVKDDECESDAENEQNHDPNVEEFLQQQDVAVIF
 PEAPEEDQRQGTPEASGHDENGTDAFSQLLTCPCYDRGYKRFSTLKEHIKYRHEKNEDNFSCLSCSYTF
 AYRTQLERHMTSHKSGRDQRHVTQSGCNRKFKCTECGKAFKYKHHLKEHLRIHSGEKPYECPNCKKRFSH
 SGSYSSHISKKCISLIPVNGRPRRTGLKTSQCSSPSLSASPGSPTRPQIRQKIENKPLQEQLSVNQIKTE
 PVDYEFKPIVVASGINCSTPLQNGVFTGGGPLQATSSPQGMVQAVVLPVGLVSPISINLSDIQNVLKVA
 VDGNIQVLENNQANLASKEQETINASPIQQGGHVSISAISLPLVDQDGTTKIINYSLEQPSQLQVVP
 QNLKKNPVATNSCKSEKLPEDLTVKSEKDSFEGGVNDSTCLLDDCPGDINALPELKHYDLKQPTQPP
 PLPAAEAKEPSSVSSATGDGNSLSPSQPPLKNLLSLLKAYYALNAQPSAEELSKIADSVNLPLDVVKKWF
 EKMQAGQISVQSSEPPSPGKVNIPAKNNDQPQSANANEPQDSTVNLQSPKMTNSPVLVPGSTTNGSR
 SSTPSPSPLNLSRNTQGYLYAEGAQEPEPLDLPLPKQQGELLERSTITSVYQNSVYSVQEEPLN
 LSCAKKEPQKDSVTDSEPVVNVIPPSANPINIAIPTVTAQLPTIVAIADQNSVPLRALAANKQITLIP
 QVAYTYSTTVSPAVQEPPLKVIQPNGNQDERQDTSSEGVSNVEDQNDSDSTPPKKMKRKTENGMACDLC
 DKIFQKSSLLRHKYEHTGKRPHECGICKKAFKHKHLIEHMRLHSGEKPYQCDKCGKRFSHSGYSQHM
 NHRYSYCKREAERDSTEQEEAGPEILSNEHVGARASPSQGDSDERESL TREDEDESEKEEEEEEDKEMEE
 LQEEKECEKPGDEEEEEEEEEVEEEVEEAENEGEAAKTEGLMKDDRAESQASSLGQKVGESSEQVSEE
 KTNEA

TRTRPLE - GFP Tag - V

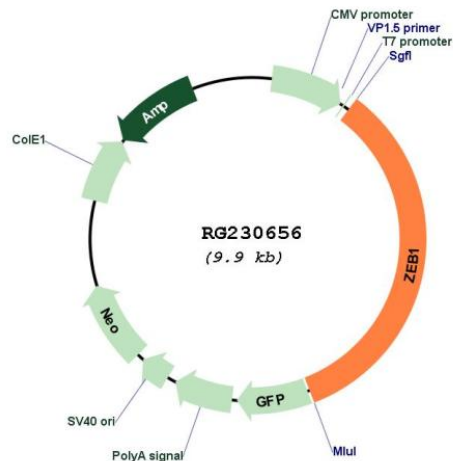
Restriction Sites: SgfI-MluI

Cloning Scheme:

Cloning sites used for ORF Shuttling:



Plasmid Map:



ACCN: NM_001174096

ORF Size: 3375 bp

OTI Disclaimer: The molecular sequence of this clone aligns with the gene accession number as a point of reference only. However, individual transcript sequences of the same gene can differ through naturally occurring variations (e.g. polymorphisms), each with its own valid existence. This clone is substantially in agreement with the reference, but a complete review of all prevailing variants is recommended prior to use. [More info](#)

OTI Annotation: This clone was engineered to express the complete ORF with an expression tag. Expression varies depending on the nature of the gene.

Components: The ORF clone is ion-exchange column purified and shipped in a 2D barcoded Matrix tube containing 10ug of transfection-ready, dried plasmid DNA (reconstitute with 100 ul of water).

Reconstitution Method:

1. Centrifuge at 5,000xg for 5min.
2. Carefully open the tube and add 100ul of sterile water to dissolve the DNA.
3. Close the tube and incubate for 10 minutes at room temperature.
4. Briefly vortex the tube and then do a quick spin (less than 5000xg) to concentrate the liquid at the bottom.
5. Store the suspended plasmid at -20°C. The DNA is stable for at least one year from date of shipping when stored at -20°C.

RefSeq: [NM_001174096.2](#)

RefSeq Size: 6001 bp

RefSeq ORF: 3378 bp

Locus ID: 6935

UniProt ID: [P37275](#)

Cytogenetics: 10p11.22

Protein Families: Transcription Factors

Gene Summary: This gene encodes a zinc finger transcription factor. The encoded protein likely plays a role in transcriptional repression of interleukin 2. Mutations in this gene have been associated with posterior polymorphous corneal dystrophy-3 and late-onset Fuchs endothelial corneal dystrophy. Alternatively spliced transcript variants encoding different isoforms have been described.[provided by RefSeq, Mar 2010]