

Product datasheet for **RG230626**

CPEB2 (NM_001177382) Human Tagged ORF Clone

Product data:

Product Type:	Expression Plasmids
Product Name:	CPEB2 (NM_001177382) Human Tagged ORF Clone
Tag:	TurboGFP
Symbol:	CPEB2
Synonyms:	CPE-BP2; CPEB-2; hCPEB-2
Mammalian Cell Selection:	Neomycin
Vector:	pCMV6-AC-GFP (PS100010)
E. coli Selection:	Ampicillin (100 ug/mL)
ORF Nucleotide Sequence:	>RG230626 ORF sequence, codon optimized . Due to the complexity of NM_001177382, the ORF clone is codon optimized for mammalian Expression. The nucleotide sequence differs from the reference sequence, yet the amino acid sequence remains identical.

Red=Cloning site Blue=ORF Green=Tags(s)

TTTTGTAATACGACTCACTATAGGGCGGCCGGGAATTCGTCGACTGGATCCGGTACCGAGGAGATCTGCC
GCC**CGGATCGCC**

ATGCGGGACTTCGGCTTTGGCGTCCTGCAAACCGCTCCGCTCCGCTCTAGCTCCCCGGCCCTCTGTTTT
GCGGGGAGGCTTATGGGCCCTACGCCGTAGGTAGTGTGAATCCATTGCCAGCGCAACACCTTTGGACC
GCTGAGCCACCCCTCTGCCAGTGACAGGTTTTCTGGAGGCAGCCTCCCCATTCTCCGTCCTCCCTTGGC
GGAGGTGCTGGATCCCCAGCCGAGCAGCATCTCCAGCAGTCTTTTCTGGCCACCAGCAGACAATGC
AGGATGAGCTCCTTTGGGTCTTACCCAGCAACCCGCACGACCATTGTCTGGGGCCGCCGTACAGAGAA
GCTGCCGATCACCACCCGGTGGTGGCACCATTGCCGGGTGACACATTTGCTGCCAAGTCAGGATTTT
AAGCCCAGCCTGCACCACCCCTCATCAAGCAGTGCCAGCAGTTGCTGCTGTTGTAGGACTTCAAGCCCC
AGGACTTCAGTAAGAGACAGCAACAGCAGCTTTCAAGCCAGAAGCGGAAGGAGTTTTCCCGCCTCACCT
GCCCCACCCCGACAGTAAGCCACCCCTCCACCCCTCCACTGCATTGTCTGGGCGCTTCTCCCT
CCACCCCGCCAGCTGGACCCCTCCTGCAGCCTGCCAGCTGGCACAGCGCCAGCAGCAGCAACCCCTC
AACAGTTCAGCTTGTGCACCAGCAGCCTGTCCCTCAGGACTTTGCCCCAGCCAGCGGCCCTGTA
TCTCCCTCCTCTCCCCAGCTGCCACCATCACCCAGCAGCACCAGAAAGGCGCCATGGTGGTCCCGGA
TCTCCTCGAAAGACGCCCGCCGGAGAGGGATCTGCCCGGAGAGCCCCAACGCGGGTTGGCCTCTT
CTACACCGGTAATCCTGCTCCCGGCTCCATGGAATCCCCAAACCATCCCTCCTCAATCCCCGAGTAA
TCTTCTGCTGGGGCGCCCTGGGCGGGGAGCCTTTCTCTCTGCAGAGTCTGACCTGCCGATCCT
GGCGGGGGGGGGAGGGGGGGTGGGGGCCACCTGGGGGGGAGGAGTGGTGGTAGTCCAGCCCTC



```

CACCTCTCCCAGGCTTCGGAACGCCTTGGAGCGTGCAAACCTGCCTCTCCTCCCCACAGCCGAGCAGCC
ACCCCCTACCCAGCCTCAGCAACAGCCACCCCCTCCCCAGCAGCCTCCTCAGCCGAGCCTCAGCCCCC
GGTTATCCGCTACTACTCCAGGGGGCGGAGCGGGCTCTCTCAGCGCAATGCCCCCTCTTCCCCC
ACTCAGAGAATGGATTCTATCCTGGACTCCCAGCAGTATGAATCCAGCATTTTTTCCATCTTTTAGTCC
TGTTAGCCCCATGGCTGTACCGGCTCAGTGTCCAACCTCCGGCGGGAGGCGGGGCTTCGGAGGC
CCTTTTTCTGCCACTGCAGTCCCTCCCCCTCTCCCCCGGATGAACATCCCCAGCAACAGCCCCAC
CACCGGCGCTCCCCAACAGCCTCAGTCTAGGCGGAGTCCGCTCTCACCGCAGCTGCAGCAGCACCA
AGCAGCCGAGCCGCTTTCTTTCAGCAGCGGAACAGTTACAATCATCATCAGCCGCTCTTAAACAGTCC
CCTTGGAGTAACCAATCCTCCGTTGGGGGACGGGTCTATGAGTTGGGGGCGATGCACGGGAGAG
ATCACAGAAGGACAGAAACATGGGAATCCCTGGGACAATGAACCAAATAAGTCCCTCAAAAAGCCCTT
CAGCGAAATGTTATCGCACCCCCAAATTCACACGGTCCACACCTTCATTGACACCGAAGTCTGGATA
GAAGACAATGTTTTAGGACTGACAACAATAGCAATACTCTGCTCCACTGCAGGTGCGAAGCTCCCTTC
AGTGCCCGCTGGGATCAGACAGCCTCAAGACTCCTGGTGCACCGCAGCCGGACAAGCCGAATCGA
TCAGGACCGCAGCCGGATGTACGACTCTCTGAATATGCACAGTCTGGAGAACAGCCTGATTGACATTATG
CGAGCTGAGCAGACCCCCTTAAGGGCCGCTCTCATATCCACATCCCGAACCACAATCTTCTCATGC
TTAACGCCCGAGTTATGGAAGGCGCCAGGCAGATCTTCCCTGTTCCCTATTGATGACGGTCTTCTGGA
CGACGGCCATTAGATCAAGTAGGAGTGCTTAACAGCCCCACCTGCTACAGTGCACACCAGAACGGCGAG
AGAATTGAGAGGTTCTCTCGAAAAGTTTTGTGGGTGGGCTTCTCCCGACATTGACGAGGATGAGATTA
CAGCCAGTTTCAGGCGCTTTGGGCCCTTGGTCGTAGACTGGCCTCACAAGCAGAATCCAAGAGCTACTT
TCCTCCAAAGGCTACGCCTTTCTCTGTTCCAAGAAGAGTCTCTGTCCAGGCGCTCATTGATGCTTGC
ATCGAAGAAGACGGGAAGCTTTATCTGTGCGTTTCTTACCTACTATAAAAGATAAACAGTGCAGATTC
GACCTTGAATCTGTCCGACAGCGATTTCTGTATGGACGGTAGCCAGCCACTTGACCCAAGAAAGACCAT
TTTTGTGGGCGGTCCCTCGCCACTCGGACCGTGTAGCTCGCCATGATCATGGATCGACTCTACGGT
GGAGTATGCTACGCCGGAATCGATACAGATCCGGAGCTCAAATACCCAAGGGAGCTGGAAGGGTGGCCT
TCTCAATCAGCAATCATATATCGCTGCGATTTCCGCTCGATTCTGTGAGTTGAAACATGGCGATATCGA
CAAAAGAGTGAAGTAAAACCGTATGTGCTTGATGACCAATGTGTGACGAGTGCCAGGGCGCTCGGTGT
GGGGTAAAGTTTCCCCCTTTTCTGTGCCAATGTAACCTGCTTGCAGTATTACTGCGAATTCTGCTGGG
CAAACATCTACTCTCGAGCCGGGAGGGAGTCCACAAACCCTTGGTCAAGGAGGGAGCTGACCGCCACG
CCAAATCCACTTCGATGGAAC
    
```

ACGCGTACGCGGCCGCTCGAG – GFP Tag – GTTTAA

Protein Sequence:

>RG230626 representing NM_001177382
 Red=Cloning site Green=Tags(s)

```

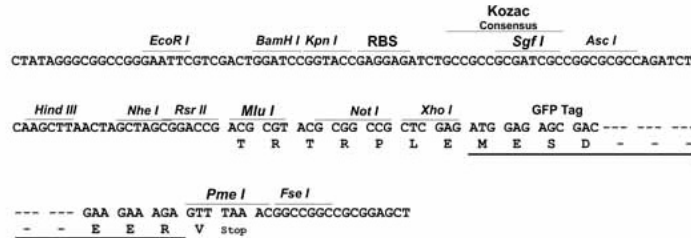
MRDFGFGVLQTAPLRSSSPGPLFCGEAYGPYAVGSVNPLPSATPFGPLSPPLPVTGFLEAASPFVPLG
GGAGSPAAAASSSPFLAHQQTMDLLELLGLTQQPARPLSGAAATEKLPDHHPPGGTIAGVTHLLPSQDF
KPSLHHPSSSSASCCCRSSPQDFSKRQQQLSSQKRKEFSPPHLPHPDPSKPPPPPLHCPGRFSP
PPPPAGPLLQPAQLAQRQQQPPQFSLHQQHLSQDFAPRQRPADLPPLPQLPPSPPAAPRRRHGGAG
SPRKTPAAGEGSAEASNAGLASSTPVNPAPGSMESPNHPLLNSPSNLLPGGALGAGAFSSLQSPDLPH
GGGGGGGGGPPGGGGGGSASPPPLPGFGTPWSVQTASPPQPQPPPTQPQQQPPPPQPQPQP
GSSATTPGGGSGSLSAMPPSPDSENGFYPLPSSMNPAFFPSFSPVSPHGCTGLSVPTSGGGGGFGG
PFSATAVPPPPAMNIPQQPPPAAPQPQSRSPVSPQLQQHQAAAAAFLQQRNSYNHHQPLLKQS
PWSNHQSSGWTGSMSWGAMHGRDHRRTGNMIGPTMNQISPLKKPFSGNVIAPPKFRSTPSLTPKSWI
EDNVFRDNNNTLLPLQVRSSLQLPAWGSDSLQDSWCTAAGTSRIDQDRSRMYDSLNMHSLNSLIDIM
RAEHDPLKGRLSYPHPGTDNLLMLNARSYGRRRGRSSLFPIDGLLDDGHSDQVGLNSPTCYSAHQNGE
RIERFSRKVFVGLPPDIDEDEITASFRRFGPLVVDWPHKAESKSYFPPKGYAFLLFQEESVQALIDAC
IEEDGKLYLCVSPTIKDKPVQIRPWNLSDSDFVMDGSQPLDPRKTIFFVGGVPRPLRAVELAMIMDRLYG
GVCYAGIDTDPELKYPKAGRVAFSNQSSYIAAISARFVQLQHGDIDKRVEVKPYVLDQMCDEQCQGARC
GGKFAPFFCANVTCLQYYCEFCWANIHSRAGREFHKPLVKEGADRPRQIHFWRN
    
```

TRTRPLE – GFP Tag – V

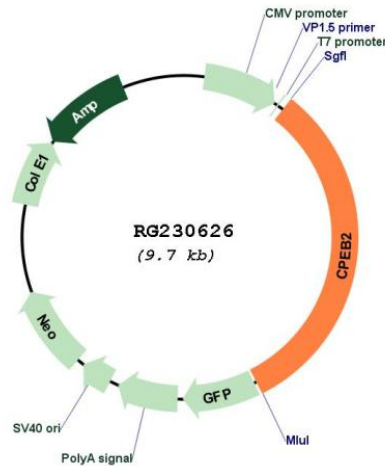
Restriction Sites: SgfI-MluI

Cloning Scheme:

Cloning sites used for ORF Shutting:



Plasmid Map:



ACCN: NM_001177382

ORF Size: 3102 bp

OTI Disclaimer: The molecular sequence of this clone aligns with the gene accession number as a point of reference only. However, individual transcript sequences of the same gene can differ through naturally occurring variations (e.g. polymorphisms), each with its own valid existence. This clone is substantially in agreement with the reference, but a complete review of all prevailing variants is recommended prior to use. [More info](#)

OTI Annotation: This clone was engineered to express the complete ORF with an expression tag. Expression varies depending on the nature of the gene.

Components:	The ORF clone is ion-exchange column purified and shipped in a 2D barcoded Matrix tube containing 10ug of transfection-ready, dried plasmid DNA (reconstitute with 100 ul of water).
Reconstitution Method:	<ol style="list-style-type: none">1. Centrifuge at 5,000xg for 5min.2. Carefully open the tube and add 100ul of sterile water to dissolve the DNA.3. Close the tube and incubate for 10 minutes at room temperature.4. Briefly vortex the tube and then do a quick spin (less than 5000xg) to concentrate the liquid at the bottom.5. Store the suspended plasmid at -20°C. The DNA is stable for at least one year from date of shipping when stored at -20°C.
RefSeq:	<u>NM_001177382.1, NP_001170853.1</u>
RefSeq Size:	7069 bp
RefSeq ORF:	3105 bp
Locus ID:	132864
UniProt ID:	<u>Q7Z5Q1</u>
Cytogenetics:	4p15.32
Gene Summary:	The protein encoded by this gene is highly similar to cytoplasmic polyadenylation element binding protein (CPEB), an mRNA-binding protein that regulates cytoplasmic polyadenylation of mRNA as a trans factor in oogenesis and spermatogenesis. Studies of the similar gene in mice suggested a possible role of this protein in transcriptionally inactive haploid spermatids. Alternatively spliced transcript variants encoding distinct isoforms have been described. [provided by RefSeq, Jul 2008]