

Product datasheet for **RG230613**

CNKSR2 (NM_001168647) Human Tagged ORF Clone

Product data:

Product Type:	Expression Plasmids
Product Name:	CNKSR2 (NM_001168647) Human Tagged ORF Clone
Tag:	TurboGFP
Symbol:	CNKSR2
Synonyms:	CNK2; KSR2; MAGUIN; MRXSHG
Mammalian Cell Selection:	Neomycin
Vector:	pCMV6-AC-GFP (PS100010)
E. coli Selection:	Ampicillin (100 ug/mL)
ORF Nucleotide Sequence:	>RG230613 representing NM_001168647 Red=Cloning site Blue=ORF Green=Tags(s)

TTTTGTAATACGACTCACTATAGGGCGGCCGGAATTCGTCGACTGGATCCGGTACCGAGGAGATCTGCC
GCC**CGATCGCC**

ATGGCTCTGATAATGGAACCGGTGAGCAAATGGTCTCCGAGTCAAGTAGTGGACTGGATGAAAGTCTTG
ATGACTGTTTGCAGCAGTATATTAAGAAGTTTGGAGGGAGAAGATCAGTGGGACCAGCTGCTGCGCAT
TACACATCAGGAGCTAGAAGATCTGGGGTCCAGCCGATTGGCCATCAGGAAGTATCTTGAAGCAGTT
GACCTTCTGTGTGATTGAATTATGGCTTGGAAACAGAAAATCTAAAAACCTTTCTCACAAGTTGAATG
CATCTGCCAAAAATCTGCAGAATTTATAACAGGAAGGAGAAGGAGTGGCCATTATGATGGGAGGACCAG
CCGAAAATTGCCAACGACTTTCTGACCTCAGTTGTGGATCTGATTGGAGCAGCCAAGAGTCTGCTTGCC
TGGTTGGACAGGTCACCATTTGCTGTGTGACAGACTATTCAGTTACAAGAAATAATGTCATACAACCTCT
GCCTGGAGTTAACAACAATTGTGCAACAGGATTGTACTGTATATGAAACAGAGAAATAAAATCTTACAGT
GTGTAACACTCTTTCTGGAGTCTGTGACCACATCATATCCCTGTCGTCAGATCCTCTGGTTTACAGTCT
GCTCACCTGGAAGTATTCAACTGGCAACATTAACCAAGCGAAGGGCTGGGTATGTATATTAATCTA
CATATGATGGCCTCCATGTAATTACTGGAACACAGAAAATTCACCTGCAGATCGGTGCAAGAAAATCCA
TGCTGGCGATGAAGTATTCAAGTTAATCATCAGACTGTGGTGGGTGGCAGTTGAAAAATTTGGTGAAT
GCACTACGAGAGGACCCGAGTGGTATTCTTAACTTTGAAAAAGCGACCTCAGAGCATGCTTACCTCAG
CACCAGCTTTACTGAAAAATATGAGATGGAAGCCCTTGCTCTGCAGCCTCTTATACCTAGAAGTCCCAC
AAGCAGCGTTGCCACGCCTTCCAGCACCATCAGTACACCCACAAAAGAGACAGTTCTGCCCTCCAGGAT
CTCTACATTTCCCCTCCTCCTGCAGAACCATATATTTCCAGGGATGAAAAAGGAAACCTTCTTGTGAAG
ACCTCAGAGGACATATGGTGGGCAAGCCAGTGCATAAGGGATCTGAATCACCAAATTCATTTCTGGATCA
GGAATATCGAAAGAGATTTAATATTGTCGAAGAAGATACTGTCTTATATTGCTATGAATATGAAAAAGGA
AGATCAAGTAGTCAAGGAAGACGAGAAAGCACCCCACTTATGAAAACCTCTACTTCGGTATATGAGCA
ATGAAAAGATTGCTCAAGAAGAATACATGTTTCAGAGAAAACAGCAAAAAGGACACAGGGAAGAAGTCAA
AAAGAAGGTGATAAGAGTAATAGCCCACTACTATTTCATTGCTACCTAGTTTACAATGGATGCACTG



[View online >](#)

```

AGACAAGACATCATGGGCACTCCTGTGCCAGAGACCACACTATACCATACATTTTCAGCAGTCCCTACTGC
AGCACAATCAAAGAAGAAAAACAAAGGTCTATAGCAGGCAAGAGCAAAAGACGAATTTCTTGCAAAGA
TCTTGGCCGTGGTACTGTGAGGGCTGGCTTTGGAAAAAGAAAGATGCGAAGAGTTACTTTTACAGAAA
TGGAAAAAATATTGGTTTGTCTAAAGGATGCATCCCTTTATTGGTATATTAATGAGGAGGATGAAAAAG
CAGAAGGATTCATTAGCCTGCCTGAATTTAAAATTGATAGAGCCAGTGAATGCCGCAAAAAATATGCATT
CAAAGCCTGTATCCTAAAATCAAAGCTTTTATTTTGTCTGCTGAACATCTTGATGATATGAACAGGTGG
CTTAACAGAATTAATATGCTGACTGCAGGATATGCAGAAAGAGAGAGGATTAAGCAGGAACAAGATTACT
GGAGTGAGAGTGACAAGGAAGAAGCAGATACTCCATCAACACCAAAACAAGATAGCCCTCCACCCCATATA
TGATACATACCCACGACCTCCCTCGATGAGTTGCGCCAGTCCCTTATGTGGAAGCAAAACATAGCCGACTT
TCCTCCACGGAGACTTCTCAGTCTCAGTCTTCTCATGAGGAGTTTCGCCAGGAAGTAAGTGGGAGCAGTG
CAGTGTCTCCATTTCGAAGACAGCCAGTCAAGCGGCTCCTGGCAGGATTTAATTGAGACGCCACTGAC
AAGTTCAGGCTTACACTATCTTCAGACTCTGCCCTGGAGGATTTCTGTCTTCTGACTCCGCGGCCATC
TCCCCAGAGCACAGGCGGAGTCTACCCTGCCAAGTCAAGAAATGCCACCTGCAGGATCACTATGGCCAT
ACCCCTTAGCTGAGAGTGAGAGGATGCAAGTGTAAATGGAATGGGGCAAGCCTCGAAGTTTACTCT
GCCTCGAGATAGCGGGTCAACCATTGCTGTCTGAATGCTCCAGTTAGTGCCTGTGACCCACAGGATGAC
GTCAACCCAGAGGTGGAGGAAGAGGAGGAGGAGGAGGAGGAGGAGGAGGAGGAGGAGGAGGAGGAGGAGG
TAGGAGAAAAAGTGAAGCAGAGAAGAAAAAGTTAGGAGACTCATTGCAAGATTTATACAGGCACTGGA
GCAGGCCAGTCTGTACCACTAGGAGAATCGTATTTCAACCAAGATGGAATACAAGCTATCATTATA
AAAAGATGTAATGATCCTGTAATGAATGAAAACTACACCGGCTGAGAATTTCAAAGCACTTTAAAGG
CCAGAGAAGGGGAAGTAGCCATTATCGATAAAGTCTAGACAATCCAGACTTGACATCTAAAGAATTCCA
ACAATGGAAGCAGATGTACCTCGACCTTTCTTGGATATCTGTCAAATACCACCTCAAATGACCCACTG
AGTATTTCTTCTGAAGTAGATGTAATCACTTCTCTAGCACACTCATTATACATTGAAACGCATG
TC
    
```

ACGCGTACGCGGCCGCTCGAG - GFP Tag - GTTTAA

Protein Sequence:

>RG230613 representing NM_001168647
 Red=Cloning site Green=Tags(s)

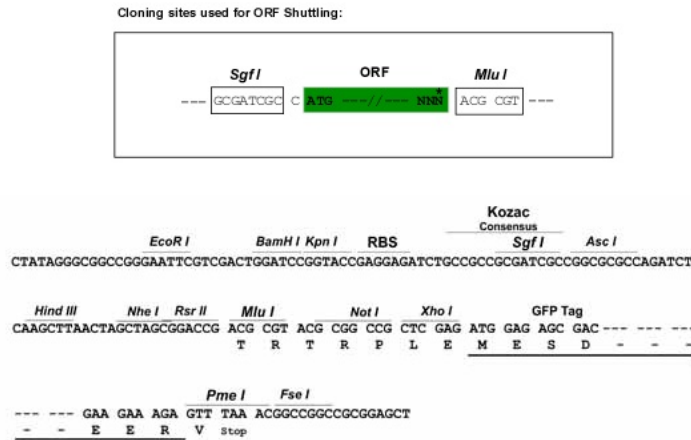
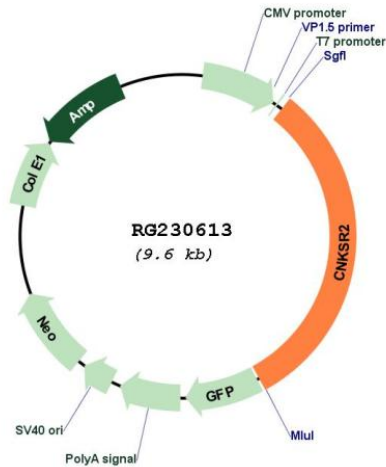
```

MALIMEPVSKWSPSQVVDWMKGLDDCLQQYIKNFEREKISGDQLLRITHQELEDLGVSRIGHQELILEAV
DLLCALNYGLETENLKTLSHKLNASAKNLQNFITGRRRSGHYDGRTRKLPNDFLTTSVVDLIGAAKSLLA
WLDRSPFAAVTDYSVTRNNVIQLCLELTTIVQQDCTVYETENKILHVCKTSGVCDHIISLSSDPLVSQS
AHLEVIQLANIKPSEGLGMYIKSTYDGLHVITGTTENSPADRCKKIHAGDEVIQVNHQTVVQWQLKLVN
ALREDPSGVILTLKKRPQSM L TSAPALLKNMRWKPLALQPLIPRSPTSSVATPSSTISTPTKRDSSALQD
LYIPPPPAEPIPRDEKGNLPCEDLRGHMVGKPVHKGSESPNSFLDQEYRKRFNIVEEDTVLYCYEYKKG
RSSSQRRRESTPTYENSLRYMSNEKIAQEEYMFQRNSKKTGKSKKKGDKSNSPHTYSLPLSLQMDAL
RQDIMGTPVPETTLYHTFQQSSLQHKSKKKNKGP IAGKSKRRI SCKDLGRGDCEGWLWKKKDAKSYFSQK
WKKYWFVLKDALYWIINEEKEAEGFISLPEFKIDRASECRKKYAFKACHPKIKSFYFAAEHLDDMNRW
LNRINMLTAGYAERERIKQE QDYWSESDKEEADTPSTPKQD SPPPPYDYPRPPSMSCASPYVEAKHSRL
SSTETSQSQSSHEEFRQEVTGSSAVSPIRKTASQRRSWQDLIETPLTSSGLHYLQTLPLEDSVFSDSAAI
SPEHRRQSTLPTQKCHLQDHGYPYLAESERMVQLNGNGGKPRSF TLP RDSGFNHCLNAPVSACDPQDD
VQPPEVEEEEEEEEGEAAGENIGEKSESREEKLGDSLQDLYRALEQASL SPLGEHRISTKMEYKLSFI
KRCNDPVMNEKLHRLRILKSTLKAREGEVAIIDKVLDPDLTSKEFQQWKQMYLDFLDICQNTTSDNPL
SISSEVDVITSSLAHTHSYIETHV
    
```

TRTRPLE - GFP Tag - V

Restriction Sites:

Sgfl-MluI

Cloning Scheme:

Plasmid Map:


ACCN: NM_001168647

ORF Size: 3012 bp

OTI Disclaimer:

The molecular sequence of this clone aligns with the gene accession number as a point of reference only. However, individual transcript sequences of the same gene can differ through naturally occurring variations (e.g. polymorphisms), each with its own valid existence. This clone is substantially in agreement with the reference, but a complete review of all prevailing variants is recommended prior to use. [More info](#)

OTI Annotation:	This clone was engineered to express the complete ORF with an expression tag. Expression varies depending on the nature of the gene.
Components:	The ORF clone is ion-exchange column purified and shipped in a 2D barcoded Matrix tube containing 10ug of transfection-ready, dried plasmid DNA (reconstitute with 100 ul of water).
Reconstitution Method:	<ol style="list-style-type: none">1. Centrifuge at 5,000xg for 5min.2. Carefully open the tube and add 100ul of sterile water to dissolve the DNA.3. Close the tube and incubate for 10 minutes at room temperature.4. Briefly vortex the tube and then do a quick spin (less than 5000xg) to concentrate the liquid at the bottom.5. Store the suspended plasmid at -20°C. The DNA is stable for at least one year from date of shipping when stored at -20°C.
RefSeq:	<u>NM_001168647.3</u>
RefSeq Size:	5679 bp
RefSeq ORF:	3015 bp
Locus ID:	22866
UniProt ID:	<u>Q8WXI2</u>
Cytogenetics:	Xp22.12
Gene Summary:	This gene encodes a multidomain protein that functions as a scaffold protein to mediate the mitogen-activated protein kinase pathways downstream from Ras. This gene product is induced by vitamin D and inhibits apoptosis in certain cancer cells. It may also play a role in ternary complex assembly of synaptic proteins at the postsynaptic membrane and coupling of signal transduction to membrane/cytoskeletal remodeling. Multiple transcript variants encoding different isoforms have been found for this gene. [provided by RefSeq, Dec 2009]