

Product datasheet for **RG230559**

CLCN2 (NM_001171087) Human Tagged ORF Clone

Product data:

Product Type:	Expression Plasmids
Product Name:	CLCN2 (NM_001171087) Human Tagged ORF Clone
Tag:	TurboGFP
Symbol:	CLCN2
Synonyms:	CIC-2; cIC-2; CLC2; ECA2; ECA3; EGI3; EGI11; EGMA; EJM6; EJM8; HALD2; LKPAT
Mammalian Cell Selection:	Neomycin
Vector:	pCMV6-AC-GFP (PS100010)
E. coli Selection:	Ampicillin (100 ug/mL)



[View online »](#)

ORF Nucleotide Sequence:

>RG230559 representing NM_001171087
 Red=Cloning site Blue=ORF Green=Tags(s)

TTTTGTAATACGACTCACTATAGGGCGGCCGGGAATTCGTCGACTGGATCCGGTACCGAGGAGATCTGCC
 GCC**CGGATCGCC**

ATGGCGCGCCGCGCGCGCGGAGGAAGGGATGGAGCCACGGCGCTGCAGTACGAGCAGACCCTGATGTATG
 GCCGGTACACTCAGGACCTTGGGGCCTTTGCCAAAGAGGAAGCTGCTCGGATTCGCTGGGAGGGCCTGA
 ACCCTGGAAGGTCCCCCTTCTCTCGGGCTGCCCCAGAGCTCTTGAATATGGACGGAGCCGTTGCGCC
 CGATGCCGCGTCTGTTCTGTCCGCTGCCACAAGTTCTAGTATCCAGGGTTGGTGAAGATTGGATCTTCC
 TGGTCTGCTGGGGCTTCTCATGGCATTGGTCAGCTGGGTGATGGACTATGCCATTGCTGCCTGTCTGCA
 AGCCCAGCAGTGGATGTCCCGGGCTTGAACACCAGCATCTTGTCCAGTACCTGGCCTGGGTACCTAC
 CCTGTTGTCTCATCACTTTCTCAGCCGGATTACACAGATCCTGGCCCTCAGGCTGTCGGCTCTGGCA
 TCCCTGAGATGAAGACCATCTTGCGGGAGTGGTGTGAAAGAATACCTCACACTCAAGACCTTTATAGC
 TAAGGTCAATGGGCTGACCTGCGCCCTAGGCAGCGGGATGCCGCTTGGCAAAGAGGGCCCTTTTGTGCAT
 ATCGCAAGCATGTGTGCTGCCCTTCTCAGCAAGTTCTCTCCCTCTTGGGGGTATCTATGAGAATGAAT
 CCCGGAACACAGAGATGCTGGCTGCCGCCTGTGCCGTGGGGTGGGCTGTGCTTCGCGGCACCTATTGG
 AGGCGTCTCTTACAGATCGAGGTACCTCCACCTTCTTTCAGTGCAGGAACTACTGGCGGGCTTCTTC
 GCTGCCACCTTACAGTGCCTTCACTTCCGGGTCTTGGCAGTCTGGAACCGGGATGAAGAGACTATTACAG
 CCCTCTTCAAACCCGATTCCGGCTCGACTTCCCTTTGACCTGCAGGAGCTGCCAGCCTTTGCTGTCA
 TGGTATTGCTAGTGGCTTCGGTGGAGCCCTTTTGTCTACCTGAACCGGAAGATTGTCCAGGTGATGCGG
 AAGCAGAAAACCATCAATCGCTTCTCATGAGGAAACGCTGCTTCCCGGCTCTGGTACCCTGCTCA
 TCTCCACGCTGACCTTCCCGCTGGCTTTGGACAGTTTCATGGCTGGACAGCTCTCACAGAAAGAGAGC
 GTTCCACCTGTTTGAACAATCGGACGTGGGTCCGCCAGGGCTGGTGGAGGAGCTAGAACCACCCAGCACC
 TCACAGGCTGGAACCCACCACGTGCCAACGTCTTCTCACCTGGTCACTTCTCATGAAGTTCT
 GGATGTCTGCACTGGCCACCACCATCCAGTTCCTGTGGGGCTTTCATGCCTGTCTTGTGATTGATGG
 AATTCATACGGACAGCAGCACCTACCGATTGTGCCTGGGGCTACGCTGTGGTGGGGCAGCTGCGCTG
 GCAGGAGCGGTGACACACAGTGTCCACGGCTGTGATCGTGTTCGAGCTCACAGGCCAGATTGCCACA
 TCCTGCCTGTGATCGCCGTATCCTGGCCACGCTGTGCCAGAGTCTGCAGCCCTCCCTCTATGA
 CAGCATCATCGAATCAAGAACTGCCCTACCTGCCTGAGCTCGGCTGGGGCCGCCACCAGCAGTACCGG
 GTGCGTGTGGAGGACATCATGGTGGGGATGTTCCCATGTGGCCCTCAGCTGCACCTTCCGGGACCTGC
 GTTTGGCACTGCACAGGACCAAGGGCCGAATGCTGGCCCTAGTGGAGTCCCTGAGTCCATGATTCTGCT
 GGGCTCCATCGAGCGTTCACAGGTGGTGGCATTGTTGGGGGCCAGCTGAGCCCAGCCCGCGGGCGGAG
 CACATGCAGGAGCGCAGAGCCACCAGACCTCTCCACTATCTGATCAGGAGGGTCCCCCTACCCCTGAGG
 CTTCTGTCTGCTTCCAGGTGAACACAGAAGACTCAGCCTTCCCAGCAGCCCGGGGGAGACCCACAAGCC
 CCTAAAGCCTGCACTCAAGAGGGGGCCAGTGTACCAGGAACCTCGGAGAGAGTCCCACAGGGAGCGCA
 GAGTCGGCAGGCATCGCCCTCCGGAGCCTTCTGTGGCAGTCCACCCCTGAGGCTGCTTCGGAGAAGT
 TGAATCCTGTGAGAAGCGCAAGCTGAAGCGTGTCCGAATCTCCCTGGCAAGTACGCGGACCTGGAAGG
 CGAGATGAGCCCTGAAGAGATTCTGGAGTGGGAGGAGCAGCAACTAGATGAACCTGTCACTTCACTGAC
 TGCAAAATTGATCCTGCTCCCTTCCAGCTGGTGGAGCGGACCTTTTGCACAAGACTCACACTATCTTCT
 CACTGCTGGGAGTGGACCATGCTTATGTACCAGTATTGGCAGACTCATTGGAATCGTTACTCTAAAGGA
 GCTCCGGAAGGCCATCGAGGGCTCTGTACAGCACAGGGTGTGAAAGTCCGGCCGCCCTCGCCAGCTTC
 CGAGACAGTGCCACCAGCAGCAGTGACACGGAGACCACTGAGGTGCATGCACTCTGGGGCCCACTCCC
 GTCATGGCCTCCCCGGGAGGGCAGCCCTTCCGACAGCGACGACAATGCCAA

ACGGTACGGGCCGCTCGAG - GFP Tag - **GTTTAA**

Protein Sequence: >RG230559 representing NM_001171087
 Red=Cloning site Green=Tags(s)

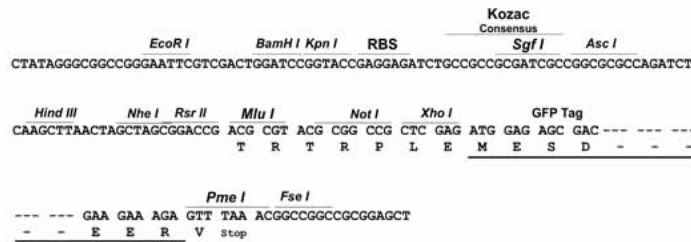
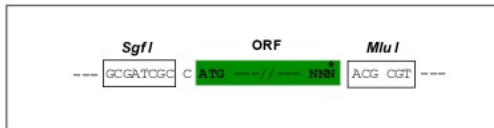
MAAAAAEEGMEPRALQYEQTLMYGRYTQDLGAFAKEEAARIRLGGPEPWKGPPSSRAAPELLEYGRSRCA
 RCRVCSVRCHKFLVSRVGEDWIFLVLLGLLMALVSWMDYAIACLQAQQWMSRGLNTSILLQYLAWVTY
 PVVLITFSAGFTQILAPQAVGSGIPEMKTILRGVVLEKEYLTKTFIAKVIGLTCALGSGMPLGKEGPFVH
 IASMAALLSKFLSLFGGIYENESRNTTEMLAAACAVGVGCCFAAPIGGVLFSEIETSTFFAVRNYWRGFF
 AATFSAFIFRVLAVWNRDEETITALFKTRFRDLDFPDLQELPAFAVIGIASGFGGALFVYLNKIVQVMR
 KQKTINRFLMRKRLLPALVTLTLLISTLTFPPGFQFMAGQLSQKETLVTLFDNRTWVRQGLVEELEPPST
 SQAWNPPRANVFLTLVIFILMKFWMSALATTIPVPCGAFMPVFVIDGIHTDSSTYRIVPGGYAVVGAAAL
 AGAVTHTVSTAVIVFELTGQIAHILPVMIAVILANAVAQSLQPSLYDSIIRIKKLPYLPGLGWRHQYR
 VRVEDIMVRDVPHVALSCTFRDLRLALHRTKGRMLALVESPEMILLGSIERSQVALLGAQLSPARRRQ
 HMQERRATQTSPLSDQEGPPTPEASVCFQVNTEDSAFPAARGETHKPLKPAKRGPSVTRNLGESPTGSA
 ESAGIALRSLFCGSPPEAAESEKLESCEKRKLKRVRIASLADLEGEMSPREEIWEQQQLDEPNVFS
 CKIDPAPFQLVERTSLHKHTHTIFSLLGVDHAYVTSIGRLIGIVTLKELRKAIEGSVTAQGVKVRPPLAS
 RDSATSSSDTETTEVHALWGPHSRHGLPREGSPSDSDDKCQ

TRTRPLE - GFP Tag - V

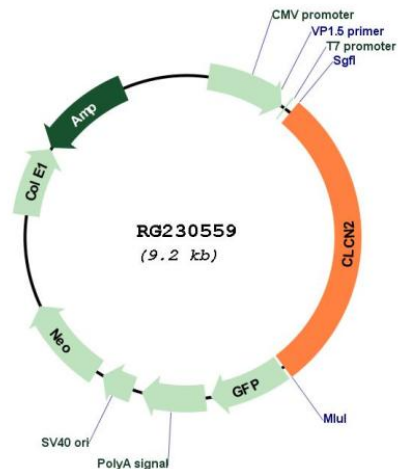
Restriction Sites: SgfI-MluI

Cloning Scheme:

Cloning sites used for ORF Shuttling:



Plasmid Map:



ACCN: NM_001171087

ORF Size: 2643 bp

OTI Disclaimer: The molecular sequence of this clone aligns with the gene accession number as a point of reference only. However, individual transcript sequences of the same gene can differ through naturally occurring variations (e.g. polymorphisms), each with its own valid existence. This clone is substantially in agreement with the reference, but a complete review of all prevailing variants is recommended prior to use. [More info](#)

OTI Annotation: This clone was engineered to express the complete ORF with an expression tag. Expression varies depending on the nature of the gene.

Components: The ORF clone is ion-exchange column purified and shipped in a 2D barcoded Matrix tube containing 10ug of transfection-ready, dried plasmid DNA (reconstitute with 100 ul of water).

Reconstitution Method:

1. Centrifuge at 5,000xg for 5min.
2. Carefully open the tube and add 100ul of sterile water to dissolve the DNA.
3. Close the tube and incubate for 10 minutes at room temperature.
4. Briefly vortex the tube and then do a quick spin (less than 5000xg) to concentrate the liquid at the bottom.
5. Store the suspended plasmid at -20°C. The DNA is stable for at least one year from date of shipping when stored at -20°C.

RefSeq: [NM_001171087.3](#)

RefSeq Size: 3248 bp

RefSeq ORF: 2646 bp

Locus ID: 1181

UniProt ID: [P51788](#)

Cytogenetics: 3q27.1

Protein Families: Druggable Genome, Ion Channels: Other, Transmembrane

Gene Summary: This gene encodes a voltage-gated chloride channel. The encoded protein is a transmembrane protein that maintains chloride ion homeostasis in various cells. Defects in this gene may be a cause of certain epilepsies. Four transcript variants encoding different isoforms have been found for this gene. [provided by RefSeq, Mar 2012]