

## Product datasheet for **RG230540**

### **CNKSR2 (NM\_001168649) Human Tagged ORF Clone**

#### **Product data:**

Product Type:	Expression Plasmids
Product Name:	CNKSR2 (NM_001168649) Human Tagged ORF Clone
Tag:	TurboGFP
Symbol:	CNKSR2
Synonyms:	CNK2; KSR2; MAGUIN; MRXSHG
Mammalian Cell Selection:	Neomycin
Vector:	pCMV6-AC-GFP (PS100010)
E. coli Selection:	Ampicillin (100 ug/mL)



[View online »](#)

**ORF Nucleotide Sequence:**

>RG230540 representing NM\_001168649  
 Red=Cloning site Blue=ORF Green=Tags(s)

TTTTGTAATACGACTCACTATAGGGCGGCCGGAATTCGTGACTGGATCCGGTACCGAGGAGATCTGCC  
 GCC**CGGATCGCC**

ATGGCTCTGATAATGGAACCGGTGAGCAATGGTCTCCGAGTCAAGTAGTGGACTGGATGAAAGGTCTTG  
 ATGACTGTTTGCAGCAGTATATTAAGAAGCTTTGAGAGGGAGAAGATCAGTGGGGACCAGCTGCTGCGCAT  
 TACACATCAGGAGCTAGAAGATCTGGGGTTCAGCCGATTGGCCATCAGGAACTGATCTTGAAGCAGTT  
 GACCTTCTGTGTGATTGAATTATGGCTTGGAAACAGAAAATCTAAAAACCCCTTCTCACAAAGTTGAATG  
 CATCTGCCAAAAATCTGCAGAATTTTATAACAGGAAGGAGAAGGAGTGGCCATTATGATGGGAGGACCAG  
 CCGAAAATTGCCAAACGACTTTCTGACCTCAGTTGTGGATCTGATTGGAGCAGCCAAGAGTCTGCTTGCC  
 TGGTTGGACAGGTCACCATTTGCTGCTGTGACAGACTATTCAGTTACAAGAAATAATGTCATACAACCTCT  
 GCCTGGAGTTAACAACAATTGTGCAACAGGATTGTACTGTATATGAAACAGAGAATAAAATCTTTCACGT  
 GTGTAAGACTCTTCTGGAGTCTGTGACCACATCATATCCCTGTGCTCAGATCCTCTGGTTTCACAGTCT  
 GCTCACCTGGAAGTGATTCAACTGGCAAACATTAACCAAGCGAAGGGCTGGGTATGTATATTAATCTA  
 CATATGATGGCCTCCATGTAATTACTGGAACCACAGAAAATTCACCTGCAGATCGGTGCAAGAAAATCCA  
 TGCTGGCGATGAAGTGATTCAAGTTAATCATCAGACTGTGCCTCTTATACCTAGAAGTCCCACAAGCAGC  
 GTTGCCACGCCTTCCAGCACCATCAGTACACCCACAAAAGAGACAGTTCTGCCCTCCAGGATCTCTACA  
 TTCCCCCTCCTCTGCAGAACCATATATCCCAGGGATGAAAAAGGAAACCTTCTTGTGAAGACCTCAG  
 AGGACATATGGTGGGCAAGCCAGTGCATAAGGGATCTGAATCACCAAATTCATTTCTGGATCAGGAATAT  
 CGAAAGAGATTTAATATGTGCAAGAAGATACTGTCTTATATTGCTATGAATATGAAAAAGGAAGATCAA  
 GTAGTCAAGGAAGACGAGAAAGCACCCCAACTTATGGCAAGCTACGACCTATATCTATGCCAGTGGAAAT  
 TAATTGGGTGGGGACTATGAAGATCCAATAAGATGAAGAGAGATAGTAGAAGAGAAAACCTCTACTT  
 CGGTATATGAGCAATGAAAAGATTGCTCAAGAAGAATACATGTTTCAGAGAAAACGCAAAAAGGACACAG  
 GGAAGAAGTCAAAAAGAAGGGTGATAAGAGTAATAGCCCAACTCACTATTCAATTGCTACCTAGTTTACA  
 AATGGATGCACTGAGACAAGACATCATGGGCACTCTGTGCCAGAGACCACACTATACCATACATTTGAG  
 CAGTCTCACTGCAGCACAAATCAAAGAAGAAAAACAAAGGTCTATAGCAGGCAAGAGCAAAAAGACGAA  
 TTTCTTGCAGAAATCTTGGCCGTGGTACTGTGAGGGCTGGCTTGGAAAAAGAAAGATGCGAAGAGTTA  
 CTTTTACAGAAATGAAAAAATATTGGTTTGTCTAAAGGATGCATCCCTTTATTGGTATATTAATGAG  
 GAGGATGAAAAAGCAGAAGGATTCAATAGCCTGCCTGAATTTAAATTTGATAGAGCCAGTGAATGCCGCA  
 AAAAATATGCATTCAAAGCCTGCATCCTAAAAATCAAAGCTTTTATTTTGTGCTGAACATCTTGATGA  
 TATGAACAGGTGGCTTAACAGAATTAATATGCTGACTGCAGGATATGCAGAAAGAGAGAGGATTAAGCAG  
 GAACAAGATTACTGGAGTGAGAGTGACAAGGAAGAAGCAGATACTCCATCAACACCAAAAACAAGATAGCC  
 CTCCACCCCATATGATACATACCCACGACCTCCCTCGATGAGTTGCCAGTCCCTTATGTGGAAGCAAA  
 ACATAGCCGACTTTCTCCACGGAGACTTCTCAGTCTCAGTCTTCTCATGAGGAGTTTCGCCAGGAAGTA  
 ACTGGGAGCAGTGCAGTGTCTCCATTCGCAAGACAGCCAGTCAAGCGCCGCTCCTGGCAGGATTTAATTG  
 AGACGCCACTGACAAGTTTCAGGCTTACACTATCTTCAAGTCTGCCCCTGGAGGATCTGTCTTCTCTGA  
 CTCCGCGGCCATCTCCCAGAGCACAGGGCGCAGTCTACCTGCCAACTCAGAAATGCCACCTGCAGGAT  
 CACTATGGGCCATACCCCTTAGCTGAGAGTGAGAGGATGCAAGTCTAAATGGAATGGGGCAAGCCTC  
 GAAGTTTTACTCTGCCTCGAGATAGCGGGTTCAACCATTGCTGTCTGAATGCTCCAGTTAGTGCCTGTGA  
 CCCACAGGATGACGTGCAACCCCAAGGTTGGAGGAAGAGGAGGAGGAGGAGGAGGAAGGGGAGGCA  
 GCAGGGGAAAACATAGGAGAAAAAAGC

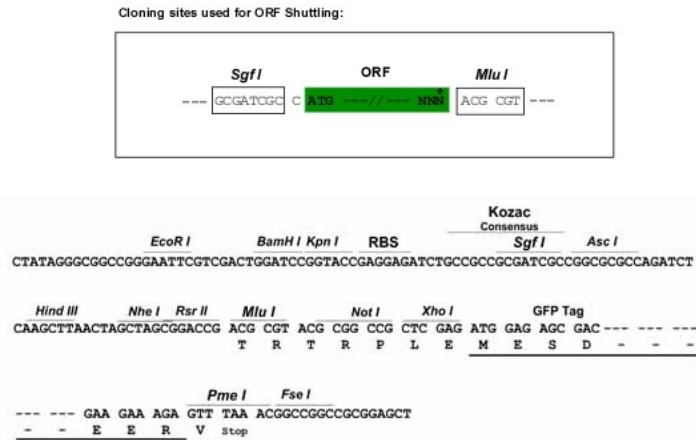
**ACGCGT**ACGCGGCCGCTCGAG - GFP Tag - GTTTAA

**Protein Sequence:** >RG230540 representing NM\_001168649  
Red=Cloning site Green=Tags(s)

```
MALIMEPVSKWSPSQVVDWMKGLDDCLQQYIKNFEREKISGDQLLRITHQELEDLGVSRIGHQELILEAV
DLLCALNYGLETENLKTLSHKLNASAKNLQNFITGRRRSGHYDGRTSRKLPNDFLTSVVDLIGAASLLA
WLDSPFAAVTDYSVTRNNVIQLCLELTTIVQQDCTVYETENKILHVCKTLSGVCDHIISLSSDPLVSQS
AHLEVIQLANIKPSEGLGMYIKSTYDGLHVITGTTENSPADRCKKIHAGDEVIQVNHQTVPLIPRSPTSS
VATPSSTISTPTKRDSSALQDLYIPPPPAEPIPRDEKGNLPCEDLRGHMVGKPVHKGSESPNSFLDQEY
RKRFNIVEEDTVLYCYEYEGRSSSQGRRESTPTYGKLRPISMPVEYNWVGDYEDPNKMKRDSRRENSLL
RYMSNEKIAQEEYMFQRNSKKTGKSKKKGDKSNSPTHYSLLPSLQMDALRQDIMGTPVPETTLYHTFQ
QSSLQHKSKKKNKGPIAGKSKRRI SCKDLGRGDCEGWLWKKKDAKSYFSQKWKYWFVLKDAASLYWYINE
EDEKAEGFISLPEFKIDRASECRKKYAFKACHPKIKSFYFAAEHLDDMNRWLNINMLTAGYERERIKQ
EQDYWSESDKEEADTPSTPKQDSPPPPYDTPRPPSMSCASPYVEAKHSRLSSTETSQSQSSHEEFQEV
TGSSAVSPIRKTASQRRSWQDLIETPLTSSGLHYLQTLPLEDSVFSDSAASISPEHRRQSTLPTQKCHLQD
HYGPYPLAESERMQVLNGNGGKPRSFTLPRDSGFNHCCLNAPVSACDPQDDVQPPEVEEEEEEEEEEGEA
AGENIGEKS
```

TRTRPLE - GFP Tag - V

**Restriction Sites:** Sgfl-Mlul

**Cloning Scheme:**


**ACCN:** NM\_001168649

**ORF Size:** 2547 bp

**OTI Disclaimer:** The molecular sequence of this clone aligns with the gene accession number as a point of reference only. However, individual transcript sequences of the same gene can differ through naturally occurring variations (e.g. polymorphisms), each with its own valid existence. This clone is substantially in agreement with the reference, but a complete review of all prevailing variants is recommended prior to use. [More info](#)

**OTI Annotation:** This clone was engineered to express the complete ORF with an expression tag. Expression varies depending on the nature of the gene.

**Components:** The ORF clone is ion-exchange column purified and shipped in a 2D barcoded Matrix tube containing 10ug of transfection-ready, dried plasmid DNA (reconstitute with 100 ul of water).

**Reconstitution Method:**

1. Centrifuge at 5,000xg for 5min.
2. Carefully open the tube and add 100ul of sterile water to dissolve the DNA.
3. Close the tube and incubate for 10 minutes at room temperature.
4. Briefly vortex the tube and then do a quick spin (less than 5000xg) to concentrate the liquid at the bottom.
5. Store the suspended plasmid at -20°C. The DNA is stable for at least one year from date of shipping when stored at -20°C.

**RefSeq:** [NM\\_001168649.3](#)

**RefSeq Size:** 4372 bp

**RefSeq ORF:** 2550 bp

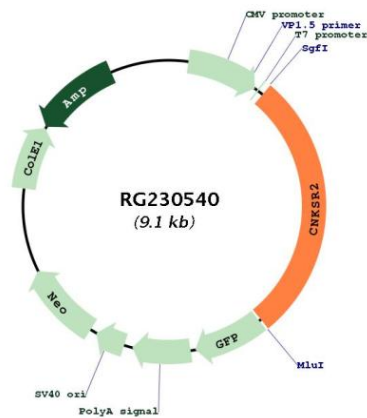
**Locus ID:** 22866

**UniProt ID:** [Q8WXI2](#)

**Cytogenetics:** Xp22.12

**Gene Summary:** This gene encodes a multidomain protein that functions as a scaffold protein to mediate the mitogen-activated protein kinase pathways downstream from Ras. This gene product is induced by vitamin D and inhibits apoptosis in certain cancer cells. It may also play a role in ternary complex assembly of synaptic proteins at the postsynaptic membrane and coupling of signal transduction to membrane/cytoskeletal remodeling. Multiple transcript variants encoding different isoforms have been found for this gene. [provided by RefSeq, Dec 2009]

### Product images:



Circular map for RG230540