

Product datasheet for **RG230538**

STAT2 (NM_198332) Human Tagged ORF Clone

Product data:

| | |
|---------------------------|--|
| Product Type: | Expression Plasmids |
| Product Name: | STAT2 (NM_198332) Human Tagged ORF Clone |
| Tag: | TurboGFP |
| Symbol: | STAT2 |
| Synonyms: | IMD44; ISGF-3; P113; PTORCH3; STAT113 |
| Mammalian Cell Selection: | Neomycin |
| Vector: | pCMV6-AC-GFP (PS100010) |
| E. coli Selection: | Ampicillin (100 ug/mL) |



[View online »](#)

ORF Nucleotide Sequence:

>RG230538 representing NM_198332
 Red=Cloning site Blue=ORF Green=Tags(s)

TTTTGTAATACGACTCACTATAGGGCGGCCGGGAATTCGTCGACTGGATCCGGTACCGAGGAGATCTGCC
 GCC**CGGATCGCC**

ATGGCGCAGTGGGAAATGCTGCAGAATCTTGACAGCCCCTTTCAGGATCAGCTGCACCAGCTTTACTCGC
 ACAGCCTCCTGCCTGTGGACATTCGACAGTACTTGGCTGTCTGGATTGAAGACCAGAAGTGCAGGAAGC
 TGCACTTGGGAGTGATGATTCCAAGGCTACCATGCTATTCTTCCACTTCTTGATCAGCTGAACTATGAG
 TGTGGCCGTTGCAGCCAGGACCCAGAGTCTTGTGTGCAGCACAATTTGCGGAAATCTGCCGGGACA
 TTCAGGATCCTACCCAGTTGGCTGAGATGATCTTTAACCTCCTTCTGGAAGAAAAAGAATTTTGATCCA
 GGCTCAGAGGGCCCAATTGGAACAAGGAGAGCCAGTCTCGAAACACCTGTGGAGAGCCAGCAACATGAG
 ATTGAATCCCGGATCCTGGATTTAAGGGCTATGATGGAGAAGCTGGTAAAATCCATCAGCCAAGTAAAG
 ACCAGCAGGATGTCTTCTGCTTCCGATATAAGATCCAGGCCAAAGGGAAGACACCCTCTCTGGACCCCA
 TCAGACCAAAGAGCAGAAGATTCTGCAGGAACTCTCAATGAACGGACAAAAGGAGAAAGGAGGTGCTG
 GATGCCTCCAAAGCACTGCTAGGCCGATTAACCTACCCTAATCGAGCTACTGCTGCCAAAGTTGGAGGAGT
 GGAAGGCCAGCAGCAAAAAGCCTGCATCAGAGCTCCCATTGACCACGGGTTGGAACAGCTGGAGACATG
 GTTCACAGCTGGAGCAAAGCTGTTGTTTACCTGAGGCAGCTGCTGAAGGAGCTGAAGGGACTGAGTTGC
 CTGTTAGCTATCAGGATGACCCCTGACCAAAGGGTGGACCTACGCAACGCCAGGTCACAGAGTTGC
 TACAGCGTCTGCTCCACAGAGCCTTTGTGGTAGAAACCCAGCCCTGCATGCCCAAACCTCCCATCGACC
 CCTCATCTCAAGACTGGCAGCAAGTTCACCGTCCGAACAAGGCTGCTGGTGAGACTCCAGGAAGGCAAT
 GAGTCACTGACTGTGGAAGTCTCCATTGACAGGAATCCTCCTCAATACAAGGCTTCCGGAAGTTCAACA
 TTCTGACTTCAAACCAGAAAATTTGACCCCGAGAAGGGGAGAGTCAAGGTTTGATTTGGGACTTTGG
 TTACCTGACTCTGGTGGAGCAACGTTCAAGTGGTTCAGGAAAGGGCAGCAATAAGGGGCCACTAGGTGTG
 ACAGAGGAACTGCACATCATCAGCTTACAGGTCAAATATACCTACCAGGGTCTGAAGCAGGAGCTGAAAA
 CGGACACCCTCCCTGTGGTGATTATTTCCAACATGAACCAGCTCTCAATTGCCTGGGCTTCAAGTTCTCTG
 GTTCAATTTGCTCAGCCAAACCTTCAGAACAGCAGTCTTCTCCAACCCCCCAAGGCCCCCTGGAGC
 TTGCTGGGCCCTGCTCTCAGTTGGCAGTTCTCCTCCTATGTTGGCCGAGGCTCAACTCAGACCAGCTGA
 GCATGCTGAGAAACAAGCTGTTCCGGCAGAACTGTAGGACTGAGGATCCATTATTGCTCTGGGCTGACTT
 CACTAAGCGAGAGAGCCCTCCTGGCAAGTTACCATTCTGGACATGGCTGGACAAAATCTGGAGTTGGTA
 CATGACCACCTGAAGGATCTCTGGAATGATGGACGCATCATGGGCTTTGTGAGTCGGAGCCAGGAGCGCC
 GGCTGCTGAAGAAGACCATGTCTGGCACCTTTCTACTGCGCTTCAAGTGAATCGTCAAGAGGGGGCATTAC
 CTGCTCCTGGGTGGAGCACCAGGATGATGACAAGGTGCTCATCTACTCTGTGCAACCGTACACGAAGGAG
 GTGCTGCAGTCACTCCCCTGACTGAAATCATCCGCCATTACCAGTTGCTCACTGAGGAGAATATACCTG
 AAAACCCACTGCGCTTCCCTATACCCCGAATCCCCGGGATGAAGCTTTTGGGTGCTACTACCAGGAGAA
 AGTTAATCTCCAGGAACGGAGGAAATACCTGAAACACAGGCTCATTGTGGTCTCTAATAGACAGGTGGAT
 GAACTGCAACAACCGCTGGAGCTTAAGCCAGAGCCAGAGCTGGAGTCATTAGAGCTGGAAGTGGGCTGG
 TGCCAGAGCCAGAGCTCAGCCTGGACTTAGAGCCACTGCTGAAGGCAGGGCTGGATCTGGGGCCAGAGCT
 AGAGTCTGTGCTGGAGTCCACTCTGGAGCCTGTGATAGAGCCACACTATGCATGGTATCACAACAGTG
 CCAGAGCCAGACCAAGGACCTGTATCACAGCCAGTGCCAGAGCCAGATTGGCCCTGTGATCTGAGACATT
 TGAACACTGAGCCAATGAAATCTTCAGAACTGTGTAAGATTGAAGAAATCATGCCGAATGGTGACCC
 ACTGTTGGCTGGCCAGAACACCGTGGATGAGGTTTACGTCTCCCGCCAGCCACTTCTACACTGATGGA
 CCCTTGATGCCTTCTGACTTC

ACGCGTACGCGGCCGCTCGAG - GFP Tag - GTTTAA

Protein Sequence: >RG230538 representing NM_198332
 Red=Cloning site Green=Tags(s)

```

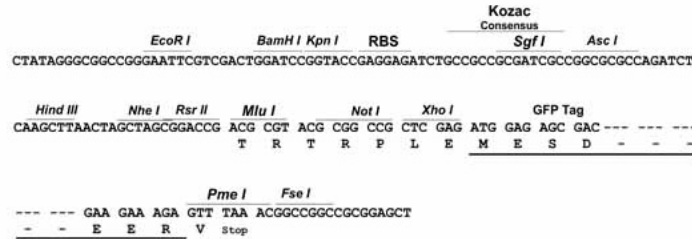
MAQWEMLQNLDSPFQDQLHQLYSHSLLPVDIRQYLAVWIEDQNWQEAALGSDDSKATMLFFHFLDQLN
CGRCSQDPESLLLQHNLKFKCRDIQDPTQLAEMIFNLLLEEKRILIQARAQLEQGEPVLETPVESQ
HIE SRILDLRAMMEKLVKSI SQLKDQDVF CFRYKIQAKGKTPSLDPHQTKEQKILQETLNELDKRR
KEVLDASKALLGRLTTLIELLLPKLEEWKAQQKACIRAPIDHGLEQLETWFTAGAKLLFHLRQLL
KELKGLSCLVSYQDDPLTKGVDLRNAQVTELLQRLLRHAFV VETQPCMPQTPHRPLILKTGSKF
TVRTRLLVRLQEGNESLTVESIDRNPPQLQGFRKFNILTSNQKLTPEKQSQGLI WDFGYLTLVE
QRSGGSGKGSNKGPLGVTEELHIISFTVKYTYQGLKQELKDTLPVVIISNMNQLSIAWASV
LWFNLLSPNLQNQFFSNPPKAPWSLLGPALSWQFSSYVGRGLNSDQLSMLRNKLF
GQNCRTEDPLL SWADFTKRESPPGKLPFWTWLDKILELVHDHLKDLWNDGRIMGFV
SRSQERRLLKKTMSGTFLLRFSESSEGGITCSWVEHQDDDKVL IYSVQPYTKEVLQ
SLPLTEIIRHYQLL TEENIPENPLRFLYPRIPRDEAFGCYYQEKVNLQERRKYLKHRL
IVVSNRQVD ELQQPELEKPEPELESLELELGLVPEPELSLDLEPLLKAGLDL
GPELESVLESTLEPVIEPTLCMVSQTVPEPDQGPVSPVPEPDLPCDLRHLNTEPMEI
FRNCVKIEEIMPNGDPLL AGQNTVDEVVYSRPSHFYTDGPLMP SDF
  
```

TRTRPLE - GFP Tag - V

Restriction Sites: Sgfl-Mlul

Cloning Scheme:

Cloning sites used for ORF Shutting:



ACCN: NM_198332

ORF Size: 2541 bp

OTI Disclaimer: The molecular sequence of this clone aligns with the gene accession number as a point of reference only. However, individual transcript sequences of the same gene can differ through naturally occurring variations (e.g. polymorphisms), each with its own valid existence. This clone is substantially in agreement with the reference, but a complete review of all prevailing variants is recommended prior to use. [More info](#)

OTI Annotation: This clone was engineered to express the complete ORF with an expression tag. Expression varies depending on the nature of the gene.

Components: The ORF clone is ion-exchange column purified and shipped in a 2D barcoded Matrix tube containing 10ug of transfection-ready, dried plasmid DNA (reconstitute with 100 ul of water).

Reconstitution Method:

1. Centrifuge at 5,000xg for 5min.
2. Carefully open the tube and add 100ul of sterile water to dissolve the DNA.
3. Close the tube and incubate for 10 minutes at room temperature.
4. Briefly vortex the tube and then do a quick spin (less than 5000xg) to concentrate the liquid at the bottom.
5. Store the suspended plasmid at -20°C. The DNA is stable for at least one year from date of shipping when stored at -20°C.

RefSeq: [NM_198332.2](#)

RefSeq Size: 4564 bp

RefSeq ORF: 2544 bp

Locus ID: 6773

UniProt ID: [P52630](#)

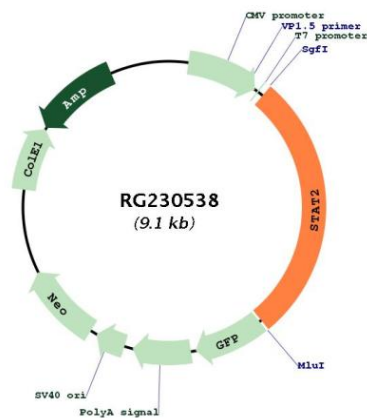
Cytogenetics: 12q13.3

Protein Families: Druggable Genome, Transcription Factors

Protein Pathways: Chemokine signaling pathway, Jak-STAT signaling pathway

Gene Summary: The protein encoded by this gene is a member of the STAT protein family. In response to cytokines and growth factors, STAT family members are phosphorylated by the receptor associated kinases, and then form homo- or heterodimers that translocate to the cell nucleus where they act as transcription activators. In response to interferon (IFN), this protein forms a complex with STAT1 and IFN regulatory factor family protein p48 (ISGF3G), in which this protein acts as a transactivator, but lacks the ability to bind DNA directly. The protein mediates innate antiviral activity. Mutations in this gene result in Immunodeficiency 44. [provided by RefSeq, Aug 2020]

Product images:



Circular map for RG230538