

Product datasheet for **RG230535**

BACH2 (NM_001170794) Human Tagged ORF Clone

Product data:

Product Type:	Expression Plasmids
Product Name:	BACH2 (NM_001170794) Human Tagged ORF Clone
Tag:	TurboGFP
Symbol:	BACH2
Synonyms:	BTBD25; IMD60
Mammalian Cell Selection:	Neomycin
Vector:	pCMV6-AC-GFP (PS100010)
E. coli Selection:	Ampicillin (100 ug/mL)



[View online »](#)

ORF Nucleotide Sequence:

>RG230535 representing NM_001170794
 Red=Cloning site Blue=ORF Green=Tags(s)

TTTTGTAATACGACTCACTATAGGGCGGCCGGAATTCGTCGACTGGATCCGGTACCGAGGAGATCTGCC
 GCC**CGGATCGCC**

ATGTCTGTGGATGAGAAGCCTGACTCCCCATGTATGTGTATGAGTCCACAGTCCACTGCACCAACATCC
 TCCTGGGCTCAATGACCAGCGGAAAAAGGATATTCTCTGTGACGTGACTTTGATCGTGGAGAGGAAGGA
 GTTCCGGGCCACCGGGCTGTGCTGGCCGCATGCAGTGAATATTTTTGGCAGGCGCTGGTTGGACAGACA
 AAAAATGATTTGGTGGTCACTTGCCTGAGGAGGTACAGCCAGGGGCTTTGGGCCGCTGTTACAGTTTG
 CCTACACTGCCAAGCTGTTACTCAGCAGAGAAAACATCCGCGAGGTATCCGCTGTGCTGAGTTCCTGCG
 CATGCACAACCTGGAGGACTCCTGCTTCACTTCTGCAGACCCAGCTCCTGAACAGTGAAGGATGGCCTG
 TTTGTGTGCCGAAGGATGCTGCGTGCCAGCGCCACACGAGGACTGCGAGAACTCTGCAGGAGAGGAGG
 AGGATGAAGAGGAGGAGACGATGGATTCAGAGACGGCCAAGATGGCTTGGCCAGGGACCAGATGCTTCC
 AGAGCCCATCAGCTTTGAGGCCCGCCATCCCGTAGCAGAGAAGGAAGAAGCCCTGCTGCCCGAGCCT
 GACGTGCCACAGACACCAAGGAGAGCTCAGAAAAGGACGCGTTAACGCAGTACCCAGATACAAGAAAT
 ACCAGTTGCATGTACCAAGAATGTCTATAATGCATCATCACACAGTACCTCAGGTTTTGAAGCACATT
 CCGGAAGATAACTTAGCAACAGCCTCAAGCCGGGGCTTGCAGGGGGCAGATTAAGAGTGAAGCCGCC
 AGTGAAGAGAATGAGGAAGAGAGCATCACGCTCTGCTGTCTGGAGATGAGCCTGACGCCAAGGACAGAG
 CGGGGGATGTCGAGATGGACCGGAAACAGCCAGCCCTGCCCTACCCACGGCCCGAGCTGGGGCCGC
 CTGCTGGAGAGATCCAGGAGCGTGGCCTCGCCCTCCTGCTTAAGGTCTCTGTTACAGATAACGAAAAGT
 GTGGAGCTGTCTGGCCTGCCAGTACATCTCAGCAGCACTTTGCCAGGAGTCCAGCCTGCCCTTTTGACA
 AGGGGATCACTCAGGGTGACCTTAAACTGACTACACCCCTTTACAGGGAATTATGGACAGCCCACTGT
 GGGCCAGAAGGAGGTGTCCAACCTCACCATGGGGTCCGCCCTCAGGGGGCCTGGGTTGGAGGCTCTCTGT
 AAACAGGAGGAGAGCTGGACCGGAGGAGCGTGATCTTCTCCTCCAGCGCTTGTGACCAAGTGAAGACCT
 CGGTGCATTCTTATTCTGGGGTGAAGCTTTGGACAAAGACCTCTCTGAGCCGGTGCCAAAGGGTCTGTG
 GGTGGGAGCCGGCAGTCCCTCCCGAGCTCGCAGGCGCTACTCCACGGTGGGCTGATGGCCGACCACTTG
 CCAGGAAGGATGCGGCCAACACCAGCTGCCCGGTACCAATCAAAGTCTGCCCTCGCTCACCCCTTGG
 AGACCAGGACCAGGACTCCAGCTCCTGCTTCTCTATTCTACGCGGAGGACGGGAGCGGGGGCTCACC
 CTGCAGCCTCCCTCTCTGTGAGTCTCCTCCTCGCCCTGTTCCAGGGAGCCAGATTCTTGCCACAGAA
 CATCAGGAACCAGCCTGATGGGAGATGGAATGTACAACCAAGTCCGGCCCAAATTAATGTGAGCAGT
 CTTATGGAACCAACTCCAGTGAAGCAATCCGGATCGTTCTCGGAAGCAGACAGTGAAGTCTGTCTGTGCA
 GGACAGGGGCCAGGAGGTAAGTCTTTTCTGTAGATCAAATCACAGATCTTCCAAGGAACGATTTTC
 CAGATGATGATTAATGACAAGCTAACCTCAGAACAGTTAGAGTTTATTATCATGATGTCCGACGGCGCA
 GCAAGAACCGCATCGCGGCCAGCGCTGCCGAAAAGGAACTGGACTGTATTGAAATTTAGAATGTGA
 AATCCGCAAAATGGTGTGTGAGAAAGAGAACTGTTGTGAGAGAGGAATCAACTGAAAGCATGCATGGGG
 GAACTGTTGGACAACCTTCTCCTGCTTTCCAGGAAGTTGCGGAGACATCCAGAGCCCCGAGCAGATCC
 AGGCCCTGCATCGGTATTGCCCTGTCTCAGACCCATGGACTTGGCCACGGCCTCCAGTATTAACCTGCG
 GCCCTTGGGTGCTGAGCAGAACATTGCGGCCTCCAATGCGCAGTGGGGGAAAACGTGCCCTGCTGCTTG
 GAGCCAGGCGCGGCTCCCCCGGACCCCTGGGCACCCAGCAACCTCCGAGAATTGTACCTTGGA
 GGAGACTAGAAGGCACTGACCCGGAACTTCTCAGAGAGAGGACCTCCTTGAACCCAGGAGCCAAAC
 AGTGACCGTGGACTTCTGCCAGGAAATGACTGATAAGTGTACAACCTGACGAACAGCCAGGAAAGATTAT
 ACC

AG**CGGACCG**ACGCGTACGCGGCCGCTCGAG - GFP Tag - GTTTAA

Protein Sequence: >RG230535 representing NM_001170794
 Red=Cloning site Green=Tags(s)

```

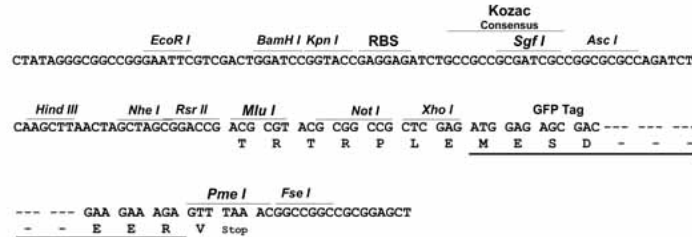
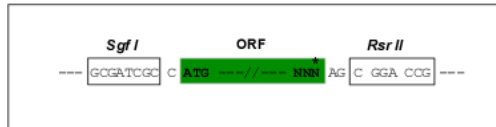
MSVDEKPDSPMYVYESTVHCTNILLGLNDQRKKDILCDVTLIVERKEFRAHRAVLAACSEYFWQALVGQT
KNDLVVSLPEEVTARGFGPLLQFAYTAKLLL SRENIREVIRCAEFLRMHNLEDSCFSFLQTLLNSEDGL
FVCRKDAACQRPHEDCENSAGEEEDEEEETMDSETAKMACPRDQMLPEI SF EAAAIPVAEKEEALLPEP
DVPTDTKESSEKDAL TQYPRYKQYLACTKNVYNASSHSTSGFASTFREDNSSNSLKPGLARGQIKSEPP
SEENEEESITLCLSGDEPDAKDRAGDVEMDRKQSPAPTPTAPAGAACLERSRSVASPCLRSLSITKS
VELSGLPSTSQQHFARSPACPFDKGITQGDLKTDYTPFTGNYGQPHVGQKEVSNFTMGSPLRGPGLEALC
KQEGELDRRSVIFSSSACDQVSTSVHSYSGVSSLDKDLSEPVPKGLWVGAGQSLPSSQAYSHGGLMADHL
PGRMRPNTSCPVPKVCPRSPPLETRTRTSSSSSSSYAEDGGGSPCSLPLCEFSPPSQGARFLATE
HQEPGLMGDGMYNQVRPQIKCEQSYGTNSSDESGSFSEADSESCPVDQRGQEVKLPFPVDQITDLPRNDF
QMMIKMHKLTSEQLEFIHDVRRRSKNRIAAQRCRKRKLDICQNLECEIRKLVCEKEKLLSERNQLKACMG
ELLDNFSCLSQEVCRDIQSPEQIQALHRYCPVLRPMDLPTASSINPAPLGAEQNIAASQCAVGENVPCCL
EPGAAPPPPPAPSNTSENCTSGRRLEGTDPGTF SERGPPEPRSQTVTVDFCQEMTDKCTTDEQPRKDY
T
  
```

SGPTRRRLE - GFP Tag - V

Restriction Sites: Sgfl-RsrII

Cloning Scheme:

Cloning sites used for ORF Shuttling:


ACCN: NM_001170794

ORF Size: 2523 bp

OTI Disclaimer: The molecular sequence of this clone aligns with the gene accession number as a point of reference only. However, individual transcript sequences of the same gene can differ through naturally occurring variations (e.g. polymorphisms), each with its own valid existence. This clone is substantially in agreement with the reference, but a complete review of all prevailing variants is recommended prior to use. [More info](#)
OTI Annotation: This clone was engineered to express the complete ORF with an expression tag. Expression varies depending on the nature of the gene.

Components: The ORF clone is ion-exchange column purified and shipped in a 2D barcoded Matrix tube containing 10ug of transfection-ready, dried plasmid DNA (reconstitute with 100 ul of water).

Reconstitution Method:

1. Centrifuge at 5,000xg for 5min.
2. Carefully open the tube and add 100ul of sterile water to dissolve the DNA.
3. Close the tube and incubate for 10 minutes at room temperature.
4. Briefly vortex the tube and then do a quick spin (less than 5000xg) to concentrate the liquid at the bottom.
5. Store the suspended plasmid at -20°C. The DNA is stable for at least one year from date of shipping when stored at -20°C.

RefSeq: [NM_001170794.1](#), [NP_001164265.1](#)

RefSeq Size: 9118 bp

RefSeq ORF: 2526 bp

Locus ID: 60468

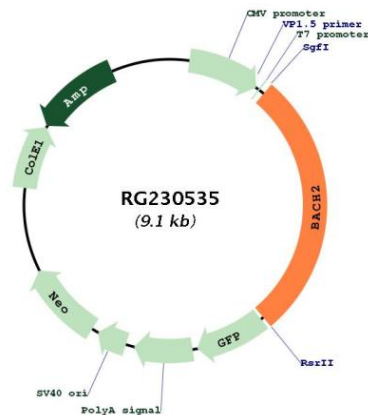
UniProt ID: [Q9BYV9](#)

Cytogenetics: 6q15

Protein Families: Druggable Genome, Transcription Factors

Gene Summary: Transcriptional regulator that acts as repressor or activator (By similarity). Binds to Maf recognition elements (MARE) (By similarity). Plays an important role in coordinating transcription activation and repression by MAFK (By similarity). Induces apoptosis in response to oxidative stress through repression of the antiapoptotic factor HMOX1 (PubMed:17018862). Positively regulates the nuclear import of actin (By similarity). [UniProtKB/Swiss-Prot Function]

Product images:



Circular map for RG230535