

## Product datasheet for **RG230526**

### **GPRASP2 (NM\_001184875) Human Tagged ORF Clone**

#### **Product data:**

Product Type:	Expression Plasmids
Product Name:	GPRASP2 (NM_001184875) Human Tagged ORF Clone
Tag:	TurboGFP
Symbol:	GPRASP2
Synonyms:	DFNX7; GASP2
Mammalian Cell Selection:	Neomycin
Vector:	pCMV6-AC-GFP (PS100010)
E. coli Selection:	Ampicillin (100 ug/mL)



[View online »](#)

**ORF Nucleotide Sequence:**

>RG230526 representing NM\_001184875  
 Red=Cloning site Blue=ORF Green=Tags(s)

TTTTGTAATACGACTCACTATAGGGCGGCCGGAATTCGTCGACTGGATCCGGTACCGAGGAGATCTGCC  
 GCC**CGGATCGCC**

ATGACTGGGGCAGAGATTGAGCCTAGTGCCAGGCCAAGCCTGAAAAGAAGGCTGGGGAAGAGGTTATCG  
 CTGGGCCTGAGAGAGAGAATGATGTCCCTCTGGTGGTCAGACCCAAGGTTAGGACCCAGGCAACTACTGG  
 GGCAAGGCCAAAACTGAGACCAAGTCTGTGCCTGCGGCAAGGCCAAAACTGAGGCCAAAGCAATGTCT  
 GGGCAAGGCCAAAACTGAGGTCCAAGTAATGGGTGGTGAAGACCCAAAAACGGAGGCTCAAGGAATCA  
 CAGGGGCCAGGCCAAAAACCGATGCCAGGGCAGTAGGTGGCGCTCGTTCTAAAACTGATGCCAAGGCAAT  
 CCCTGGAGCAAGGCCAAGGATGAGGCCAGGCATGGGCCAGAGTGAATTTGGGACTGAAGCAGTGTCA  
 CAGGCAGAAGGAGTGTCCAGACTAATGCCGTTGCTTGGCCACTGGCCACTGCTGAGTCTGGATCAGTTA  
 CTAATCTAAGGGCCTGTCTATGGATAGAGAAGTCAATGTGGATGCTGAAACCTTTCTGGCACCCA  
 GGGTCAGAAAGGAATCCAGCCCTGGTTTGGACCAGGGGAGGAGACTAATATGGGGTCTTGGTGTCTATTCC  
 AGGCCAGGGCCAGAGAGGAGGCCCTAATGAGTCTGGGTCTGGTCAGCAGATGAGACCTCTACAGCGT  
 CTTCTTTCTGGACTGGAGAAGAGACAAGTGTGAGTATGGCCAGGGAAGAGTCCAATACCAGGTCACG  
 GCACAGGGCTAAACATCAGACTAATCCCAGGTCCAGGCCAGATCCAAGCAAGAAGCCTATGTTGATTCC  
 TGGTCTGGATCTGAGGATGAGGCCAGCAACCCATTCTCCTTCTGGGTTGGAGAAAATACCAATAACTTGT  
 TCAGGCCAGAGTCAGGGAGGAGGCAAAATCAGGTCCAAGCTCAGGACAAAATAGAGAAGATTGTTTTGA  
 ATCTGAGTCTGAAGATGAGTTCATAAGCAGTCTGGGTTTTGCCTGGAGAAGAGGCCAATAGTAGATTC  
 AGGCACAGAGACAAAGAAGATCCTAATACTGCCTTGAACCTCAGGGCCAGAAAGATGTTGACAGTGATA  
 GGGTCAAACAAGAACCAGGTTTTGAGGAGGAAGTCAATTATGGGTCTGGTCTGGGCAAGAAAAGAGGC  
 CAGTTTTGGAGGGTGGAGCTTCAGCAATCTGTGAATCTGAGCCAGGAACTGAGGAGGGGCCATTGGCGGA  
 TCCGCGTACTGGGCTGAGGAAAAGTCCAGTTTGGGGGCTGTGGCCAGAGAAGAGGCCAAGCCGGAGTCTG  
 AAGAAGAGGCCATATTTGGGTCCTGTTCTGGACAGAGATGAGGCCTGCTTTGACCTAAATCCCTGTCC  
 TGTGTACAAGGTCAGTGATAGGTTTCCAGAGATGCAGCTGAGGAGCTTAATGCATCCTCCAGGCCCAAACC  
 TGGGACGAGGTCAGTGTGAATCAAACCTGGTCTTTTTCATGGGGTTGGCTTCCGATCCACAAGCCCT  
 TTGGAATCCCGAAGAGGCTTCTGAAATGCTTGAAGCAAGCCCAAGAACCTGGAACCTAGCCAGAAAG  
 AGAAGAGCAGGAATCTTTGCTTCAGCCTGATCAGCCTAGTCTGAGTTCACATTTAGTATGATCCTTCC  
 TACCGGTCAAGTCCGGAAATTCGAGAGCATCTTAGGGCCAGGAGAGTGCAGAGTCTGAGAGTTGGTCTC  
 GCAGCTGCATACAATGTGAGCTGAAAATTTGGTTCTGAAGAGTTTGAAGAATTCCTTTTATTAAATGGACA  
 AATTCGGGATCCTTTTATTTCATGAAATATCTAAAATTTGCAATGGGTATGAGAAGTCTTCTCAATTTACC  
 CGAGATTTTCATTCGAGATTCAGGTGTTGTCTCACTTATTGAAACCTTGTCTAATTTATCCATCCTCTAGAG  
 TTAGGACAAGTTTTTTGGAAAATATGATTCACATGGCTCCACCTATCCAATCTAAACATGATTGAGAC  
 ATTCATATGTCAAGTGTGTGAGGAAACCCTTGCACATAGTGTGGATTCCCTTGGAGCAGTACTGGAATA  
 AGGATGCTTAGACACCTCACTATGACTATTGACTATCACACACTGATTGCCAACTATATGTCGGGTTTC  
 TCTCCTTATTAACACAGCCAATGCGAGAACGAAGTTTCAGTCTGAAAATGCTATTGAATTTGTCTGA  
 AAATCCTGCTGTGGCAAAAAAACTATTCAGTGCCAAAGCTCTTTCAATATTTGTGGTCTCTTTAACATA  
 GAAGAGACAAATGATAATATTCAAATTTGTTATTAATAATGTTTCAGAATATCAGTAACATTATAAAAAGTG  
 GAAAGATGTCCTTAATTGATGATGATTTTCACTTGTAGCCGCTTATTTCTGCATTTCTGTAATTTGAGGA  
 GTTAGCTAAGCAACTACAAGCCCAATAGACAACCAAAATGATCCTGAGGTGGGACAACAAAGT

**ACCGTACGCGGCCGCTCGAG** - GFP Tag - GTTTAA

**Protein Sequence:** >RG230526 representing NM\_001184875  
 Red=Cloning site Green=Tags(s)

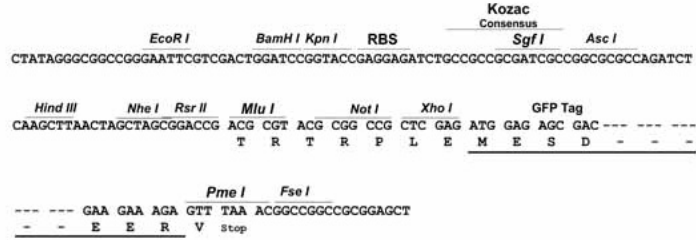
MTGAEIEPSAQAKPEKKAGEEVIAGPERENDVPLVVRPKVVRTQATTGARPKTETKSVPAARPKTEAQAMS  
 GARPKTEVQVMGGARPKTEAQGITGARPKTDARAVGGARSKTDAKAI PGARPKDEAQAQSEFGTEAVS  
 QAEGVSTNAVAWPLATAESGSVTKSKGLSMDRELVNVAETFPGTQGGKGIQPWFGPEETNMGSWCYS  
 RPRAREEASNESGFWSADETSTASSFWTGEETS VRSWPRESNTRSRRRAKHQTNPRSRPRSKQEAYVDS  
 WSGSEDEASNPF SFWVGENTNLF RPRVREEANIRSKLR TNREDCFESESEDEFYKQSWVLPGEEANSRF  
 RHRDKEDPNTALKLRAQKDVSDRVKQEPREEEVIIGSWFWAEKEASLEGGASAICESEPGTEEGAIGG  
 SAYWAEKSSLGAVAREEAKPESEEEAIFGSWFWDRDEACFDLNPCPVYKVSDFRDAAEELNASSRPQT  
 WDEVTVEFKPGLFHGVGFRSTSPFGIPEEASEMLEAKPKNLELSPEGEEQESLLQPDQPSPEFTFQYDPS  
 YRSVREIREHLRARESAESESWSCSCIQCELKIGSEEFEEFLLLMDKIRDPIHEISKIAMGMRSASQFT  
 RDFIRDGCVVSLIETLLNYPSSRVRTSFLNMIHMAPPYPNLNMIETFCVCEETLAHSVDSLEQLTGI  
 RMLRHLTMTIDYHTLIANYMSGFLSLLTTANARTKFHVLKMLLNLSENPAVAKKLFSAKALSIFVGLFNI  
 EETNDNIQIVIKMFQNISNI IKS GKMSLIDDDFSLEPLISAFREFEELAKQLQAQIDNQNDPEVGQQS

TRTRPLE - GFP Tag - V

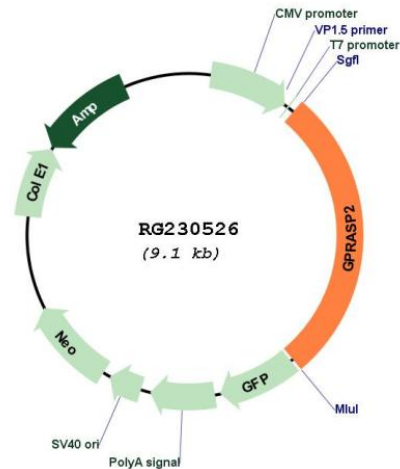
**Restriction Sites:** SgfI-MluI

Cloning Scheme:

Cloning sites used for ORF Shutting:



## Plasmid Map:



ACCN: NM\_001184875

ORF Size: 2514 bp

OTI Disclaimer: The molecular sequence of this clone aligns with the gene accession number as a point of reference only. However, individual transcript sequences of the same gene can differ through naturally occurring variations (e.g. polymorphisms), each with its own valid existence. This clone is substantially in agreement with the reference, but a complete review of all prevailing variants is recommended prior to use. [More info](#)

OTI Annotation: This clone was engineered to express the complete ORF with an expression tag. Expression varies depending on the nature of the gene.

Components: The ORF clone is ion-exchange column purified and shipped in a 2D barcoded Matrix tube containing 10ug of transfection-ready, dried plasmid DNA (reconstitute with 100 ul of water).

Reconstitution Method:

1. Centrifuge at 5,000xg for 5min.
2. Carefully open the tube and add 100ul of sterile water to dissolve the DNA.
3. Close the tube and incubate for 10 minutes at room temperature.
4. Briefly vortex the tube and then do a quick spin (less than 5000xg) to concentrate the liquid at the bottom.
5. Store the suspended plasmid at -20°C. The DNA is stable for at least one year from date of shipping when stored at -20°C.

RefSeq: [NM\\_001184875.2](#), [NP\\_001171804.1](#)

RefSeq Size: 3858 bp

RefSeq ORF: 2517 bp

Locus ID: 114928

UniProt ID: [Q96D09](#)

**Cytogenetics:** Xq22.1

**Protein Families:** Druggable Genome

**Gene Summary:** The protein encoded by this gene is a member of a family that regulates the activity of G protein-coupled receptors (GPCRs). The encoded protein has been shown to be capable of interacting with several GPCRs, including the M1 muscarinic acetylcholine receptor and the calcitonin receptor. Several transcript variants encoding the same protein have been found for this gene. [provided by RefSeq, May 2010]