

Product datasheet for **RG230519**

TRPV4 (NM_001177428) Human Tagged ORF Clone

Product data:

Product Type:	Expression Plasmids
Product Name:	TRPV4 (NM_001177428) Human Tagged ORF Clone
Tag:	TurboGFP
Symbol:	TRPV4
Synonyms:	BCYM3; CMT2C; HMSN2C; OTRPC4; SMAL; SPSMA; SSQTL1; TRP12; VRL2; VROAC
Mammalian Cell Selection:	Neomycin
Vector:	pCMV6-AC-GFP (PS100010)
E. coli Selection:	Ampicillin (100 ug/mL)



[View online »](#)

ORF Nucleotide Sequence:

>RG230519 representing NM_001177428
 Red=Cloning site Blue=ORF Green=Tags(s)

TTTTGTAATACGACTCACTATAGGGCGGCCGGGAATTCGTCGACTGGATCCGGTACCGAGGAGATCTGCC
 GCC**CGGATCGCC**

ATGGCGGATTCCAGCGAAGGCCCCCGCGGGGGCCGGGGAGGTGGCTGAGCTCCCCGGGATGAGAGTG
 GCACCCAGGTGGGAGGCTTTTCTCTCTCCTCCCTGGCCAATCTGTTGAGGGGGAGGATGGCTCCCT
 TTCGCCCTCACCGGCTGATGCCAGTCGCCCTGCTGGCCAGGCGATGGGCGACCAAACTGCGCATGAAG
 TTCCAGGGCGCCTTCCGCAAGGGGGTGCCCAACCCCATCGATCTGCTGGAGTCCACCCTATATGAGTCTT
 CGGTGGTGCCTGGGCCAAGAAAGCACCCATGGACTCACTGTTTGACTACGGCACCTATCGTACCACCTC
 CAGTGACAACAAGAGGTGGAGGAAGAAGATCATAGAGAAGCAGCCGAGAGCCCCAAAGCCCTGCCCT
 CAGCCGCCCCCATCCTCAAAGTCTTCAACCGCCTATCCTCTTTGACATCGTGTCCCGGGCTCCACTG
 CTGACCTGGACGGGCTGCTCCATTCTTGCTGACCCACAAGAAACGCCTAACTGATGAGGAGTTTCGAGA
 GCCATCTACGGGAAGACCTGCCTGCCAAGGCCTTGCTGAACCTGAGCAATGGCCGCAACGACACCATC
 CCTGTGCTGCTGGACATCGCGGAGCGCACCGGCAACATGAGGGAGTTCATTAACCTCGCCCTCCGTGACA
 TCTACTATCGAGGGGAGCTGCCCTGTCGCTGGCTGCCTGCACCAACCAGCCCCACATTGTCAACTACCT
 GACGGAGAACCCCAACAAGAAGGCGGACATGCGGCGCCAGGACTCGCGAGGCAACACAGTGTGCATGCG
 CTGGTGGCCATTGCTGACAACACCCGTGAGAACACCAAGTTTGTACCAAGATGTACGACCTGCTGCTGC
 TCAAGTGTGCCCGCCTTCCCCGACAGCAACCTGGAGGCCGTGCTCAACAACGACGGCCTCTCGCCCT
 CATGATGGCTGCCAAGACGGGCAAGATTGGGATCTTTCAGCACATCATCCGGCGGGAGGTGACGGATGAG
 GACACACGGCACCTGTCCGCAAGTTCAGGACTGGGCCTATGGCCAGTGTATTCCTCGCTTTATGACC
 TCTCCTCCTGGACACGTGTGGGAAGAGGCCTCCGTGCTGGAGATCCTGGTGTACAACAGCAAGATTGA
 GAACCCGACGAGATGCTGGCTGTGGAGCCCATCAATGAACTGCTGCGGACAAGTGGCGCAAGTTCGGG
 GCCGTCTCCTTACATCAACGTGGTCTCTACCTGTGTGCCATGGTCACTTCACTCTACCCGCTACT
 ACCAGCCGCTGGAGGGCACACCGCCTACCCTTACCGCACCGGTGGACTACCTGCGGCTGGTGGCGA
 GGTCAATACGCTTCACTGGGGTCTGTTCTTCCACCAACATCAAAGACTTGTTCATGAAGAAATGC
 CCTGGAGTGAATTCTCTTTCATTGATGGCTCCTTCCAGCTGCTCACTCATCTACTCTGTCTGGTGA
 TCGTCTCAGCAGCCCTACCTGGCAGGATCGAGGCCTACCTGGCCGTGATGGTCTTGGCCCTGGTCTC
 GGGCTGGATGAATGCCCTTACTTACCCGTGGGCTGAAGCTGACGGGGACCTATAGCATCATGATCCAG
 AAGATTCTTCAAGACCTTTCCGATTCTGCTCGTCTACTTGTCTTTCATGATCGGCTACGCTTCAG
 CCTGGTCTCCCTCCTGAACCCGTGTGCCAACATGAAGGTGTGCAATGAGGACCAGACCAACTGCACAGT
 GCCCACTTACCCCTCGTGCCGTGACAGCGAGACCTTACGACCTTCTCCTGGACCTGTTAAGCTGACC
 ATCGGCATGGGCGACCTGGAGATGCTGAGCAGCACCAAGTACCCCGTGGTCTTATCATCTCTGCTGGTGA
 CCTACATCATCTCACCTTTGTGCTGCTCCTCAACATGCTCATTGCCCTCATGGGCGAGACAGTGGGCCA
 GGTCTCCAAGGAGAGCAAGCACATCTGGAAGCTGCAGTGGGCCACCACCTCCTGGACATTGAGCGCTCC
 TTCCCGTATTCTGAGGAAGGCCTTCCGCTCTGGGGAGATGGTACCCTGGGCAAGAGCTCGGACGGCA
 CTCCTGACCGCAGGTGGTCTTCAAGGTGGATGAGGTGAACTGGTCTCACTGGAACCAGAAGTGGGCAT
 CATCAACGAGGACCCGGGCAAGAATGAGACCTACCAAGTATTATGGCTTCTCGCATACCGTGGCCGCTC
 CGCAGGGATCGTGGTCTCGGTGTACCCCGCTGGTGAAGTGAACAAGAAGTGAACAAGTGGGACGAGG
 TGGTGGTGCCTCTGGACAGCATGGGGAACCCCGCTGCGATGGCCACCAGCAGGGTTACCCCGCAAGT
 GAGGACTGATGACGCCCCGCTC

ACCGTACGCGGCCGCTCGAG – GFP Tag – GTTTAA

Protein Sequence: >RG230519 representing NM_001177428
 Red=Cloning site Green=Tags(s)

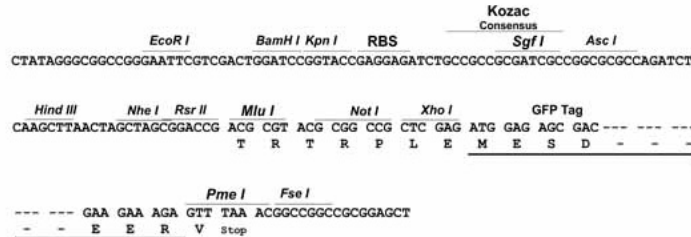
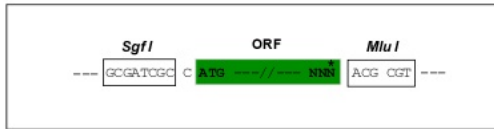
```
MADSSEGPRAGPGEVAELPGDESGTPGGEAFPLSSLANLFEGEDGSLSPSPADASRPAGPGDGRPNLRMK
FQGAFRKGVPNPIDLLESTLYESSVVPKPKAPMDSLFDYGTYRHHSSDNKRWRKKIEKQPQSPKAPAP
QPPPILKVFNRPIILFDIVSRGSTADLDGLLPFLPTHKKRLTDEEFREPSTGKTCLPKALLNLSNGRNDTI
PVLLDIAERTGNMREFINSPFRDIYYRGELPLSLAACTNQPHIVNYLTENPHKKADMRRQDSRGNTVLHA
LVAIADNTRENTKRVTKMYDLLLLKCARLFPDSNLEAVLNNDGLSPLMMAAKTGKIGIFQHIIRREVTDE
DTRHLSRKFKDWAYGPVYSSLYDLSSLDTCGEEASVLEILVYNSKIENRHEMLAVEPINELLRDKWRKFG
AVSFYINVVSYLAMVIFTLTAYYQPLEGTPPYRTTVDYLRRLAGEVITLFTGVLFFFTNIKDLFMKKC
PGVNSLFDGQSFQLLYFIYSVLIVSAALYLAGIEAYLAVMVFALVGLWMNALYFTRGLKLTGTYSIMIQ
KILFKDLFRLLVYLLFMIGYASALVLLNPCANMKVCNEDQTNCTVPTYPSCRDSETFSTFLDLFKLT
IGMGDLEMLSSTKYPVVFILLVTYIILTFVLLLNMLIALMGETVGQVSKEKHIWKLQWATTILDIERS
FPVFLRKAFRSGEMVTGKSSDGTDRRWCFRVDEVNWSHWNQNLGIINEDPGKNETYQYYGF SHTVGRLL
RRDRWSSVPRVVELNKN SNPDEVVVPLDSMGNPRCDGHQGYPRKWRTDDAPL
```

TRTRPLE - GFP Tag - V

Restriction Sites: Sgfl-MluI

Cloning Scheme:

Cloning sites used for ORF Shutting:



ACCN: NM_001177428

ORF Size: 2472 bp

OTI Disclaimer: The molecular sequence of this clone aligns with the gene accession number as a point of reference only. However, individual transcript sequences of the same gene can differ through naturally occurring variations (e.g. polymorphisms), each with its own valid existence. This clone is substantially in agreement with the reference, but a complete review of all prevailing variants is recommended prior to use. [More info](#)

OTI Annotation: This clone was engineered to express the complete ORF with an expression tag. Expression varies depending on the nature of the gene.

Components: The ORF clone is ion-exchange column purified and shipped in a 2D barcoded Matrix tube containing 10ug of transfection-ready, dried plasmid DNA (reconstitute with 100 ul of water).

Reconstitution Method:

1. Centrifuge at 5,000xg for 5min.
2. Carefully open the tube and add 100ul of sterile water to dissolve the DNA.
3. Close the tube and incubate for 10 minutes at room temperature.
4. Briefly vortex the tube and then do a quick spin (less than 5000xg) to concentrate the liquid at the bottom.
5. Store the suspended plasmid at -20°C. The DNA is stable for at least one year from date of shipping when stored at -20°C.

RefSeq: [NM_001177428.1](#), [NP_001170899.1](#)

RefSeq Size: 3051 bp

RefSeq ORF: 2475 bp

Locus ID: 59341

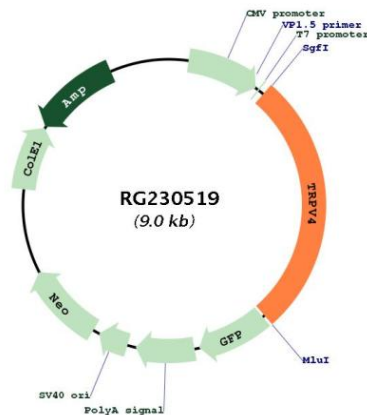
UniProt ID: [Q9HBA0](#)

Cytogenetics: 12q24.11

Protein Families: Druggable Genome, Ion Channels: Transient receptor potential, Transmembrane

Gene Summary: This gene encodes a member of the OSM9-like transient receptor potential channel (OTRPC) subfamily in the transient receptor potential (TRP) superfamily of ion channels. The encoded protein is a Ca²⁺-permeable, nonselective cation channel that is thought to be involved in the regulation of systemic osmotic pressure. Mutations in this gene are the cause of spondylometaphyseal and metatropic dysplasia and hereditary motor and sensory neuropathy type IIC. Multiple transcript variants encoding different isoforms have been found for this gene. [provided by RefSeq, Apr 2010]

Product images:



Circular map for RG230519