

## Product datasheet for **RG230502**

### TRP 7 (TRPC7) (NM\_001167577) Human Tagged ORF Clone

#### Product data:

Product Type:	Expression Plasmids
Product Name:	TRP 7 (TRPC7) (NM_001167577) Human Tagged ORF Clone
Tag:	TurboGFP
Symbol:	TRPC7
Synonyms:	TRP7
Mammalian Cell Selection:	Neomycin
Vector:	pCMV6-AC-GFP (PS100010)
E. coli Selection:	Ampicillin (100 ug/mL)



[View online »](#)

ORF Nucleotide  
Sequence:

>RG230502 representing NM\_001167577  
Red=Cloning site Blue=ORF Green=Tags(s)

TTTTGTAATACGACTCACTATAGGGCGGCCGGGAATTCGTCGACTGGATCCGGTACCGAGGAGATCTGCC  
GCCGCGATCGCC

ATGTTGAGGAACAGCACCTTCAAAAACATGCAGCGCCGGCACACAACGCTGAGGGAGAAGGGCCGTCGCC  
AGGCCATCCGGGGTCCCGCTACATGTTCAACGAGAAGGGCACCACTGCTGACGCCGAGGAGGAGCGCTT  
CCTGGACTCGGCTGAGTATGGCAACATCCCGTGGTCCGAAAATGCTGGAGGAGTCCAAGACCTTAAC  
TTCAACTGTGTGGACTACATGGGGCAGAACGCTCTGCAGCTGGCCGTGGGCAACGAGCACCTAGAGGTCA  
CGGAGCTGCTGTGAAGAAGGAGAACCTGGCACGGGTGGGGACGCGCTGCTGCTGGCCATCAGCAAGGG  
CTATGTGCGCATCGTGGAGGCCATCCTCAACCACCCGGCCTTCGCGCAGGGCCAGCGCTGACGCTCAGC  
CCGCTGGAACAGGAGCTGCGCGACGACGACTTCTATGCCTACGACGAGGACGGCACGCGCTTCTCCCACG  
ACATCACGCCATCATCCTGGCGGCGCACTGCCAGGAGTATGAGATCGTGACATCCTGCTGCTCAAGGG  
CGCCCGCATCGAGCGGCCACGACTACTTCTGCAAGTGAATGAGTGCACCGAGAAAACAGCGGAAAGAC  
TCCTTCAGCCACTCGCGCTCGCGCATGAACGCCTACAAAGGACTGGCGAGTGTGCTACTTGTCCCTGT  
CCAGCGAAGACCCTGTCCTCACCGCCCTGGAGCTCAGCAACGAGTTAGCCAGACTAGCCAACATTGAGAC  
TGAATTTAAGTTCGTTGCTCATCCTAAGTGTGACGAGCAATTGCTTACCATGTGGTATGAAAATCTCTCA  
GGCTTACGTCAACAGTCTATCGCTGTGAAATTCCTGGCTGCTTTGGAGTCTCCATAGGCCCTCCCTTTTC  
TCGCCATAGCCTATTGGATTGCTCCGTGACGAAGCTAGGACGAACCCTGAGGAGCCCTTTCATGAAGTT  
TGTAGCTCATGCAGTTTCTTTTACAATCTTCTGGGATTATTAGTTGTGAATGCATCTGACCGATTTGAA  
GGTGTAAAACCTGCCAAACGAAACCTTACAGACTACCCAAAACAAATCTTTCAGAGTGAAGAACACAC  
AGTTCTCCTGGACAGAAATGCTCATTATGAAGTGGGCTTAGGAATGATTTGGTCCGAATGCAAGGAAAT  
CTGGGAGGAGGGCCACGGGAGTACGTGCTGCACTTGTGGAACCTGCTAGATTTTCGGGATGCTGTCCATC  
TTCGTGGCCTCCTTACAGCACGCTTTCATGGCCTTCTGAAGGCCACGGAGGCACAGCTGTACGTGGACC  
AGCACGTGACGAGCAGACGCTGCAACAATGTCTCGCTTCCGCCGGAAGTGGCATACTTACCTACGCCAG  
GGACAAGTGGTGGCCTTCAGACCCTCAGATCATATCGAAGGGCTCTACGCGATAGCCGTGCTGCTGAGC  
TTCTCTCGCATTGCATACATTCTGCCAGCAACGAGAGTTTTGGGCCCTGCAGATCTCGCTAGGGAGAA  
CTGTGAAAGATATCTCAAGTTCATGGTCATTTTCATCATGGTATTTGTGGCCTTCATGATTGGGATGTT  
CAACCTGTACTCTTACTACCGAGGTGCCAAATACAACCCAGCGTTTACAACGGTTGAAGAAAGTTTTAAA  
ACTTTGTTTTGGTCCATATTCGGCTTATCTGAAGTAATCTCAGTGGTGTGAAATACGACCACAAATTC  
TCGAGAACATTGGCTACGTTCTCTACGGGTTTTATAACGTCACCATGGTGGTAGTGTGCTCAACATGCT  
AATAGCCATGATAAACTCCTATCAGGAAATGAGGAGGATGCAGATGTGGAATGGAAGTTCCGCCGA  
GCAAACTCTGGCTGTCTTACTTTGATGAAGGAAGAACTTACCTGCTCCTTTTAACTAGTGCCAAAGTC  
CTAAATCATTTTATTATCTCATAATGAGAATCAAGATGTGCCTCATAAACTCTGCAAACTAAGGCCAA  
AAGCTGTGAAATGACCTTGAATGGGCATGCTGAATCCAAATCAAGAAGACTCGCTACCAGGCTGGC  
ATGAGGAATTCTGAAAATCTGACAGCAAATAACACTTTGAGCAAGCCACCAGATACCAGAAAATCATGA  
AACGGCTCATAAAAAGATACGTCTGAAAGCCAGGTGGACAGAGAAAATGACGAAGTCAATGAAGGCGA  
GCTGAAGGAAAATCAAGCAAGATATCTCCAGCCTGCGCTATGAGCTTCTTGAGGAAAAATCTCAAGCTACT  
GGTGAGCTGGCAGACCTGATTCAACTCAGCGAGAAGTTTGGAAAGAACTTAAACAAAAGACCACCTGA  
GGGTGAACAAGGGCAAAGACATT

ACGCGTACGCGGCCGCTCGAG – GFP Tag – GTTTAA

Protein Sequence: >RG230502 representing NM\_001167577  
Red=Cloning site Green=Tags(s)

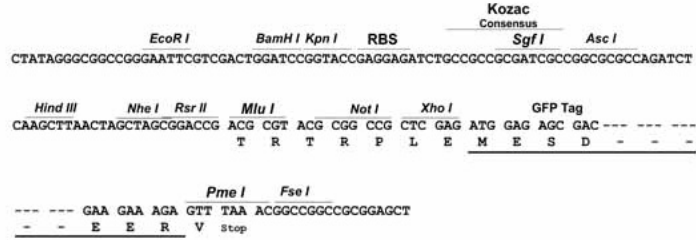
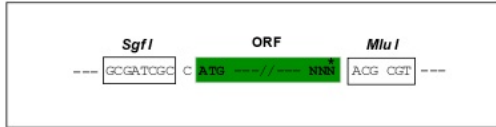
MLRNSTFKNMQRHHTLREKGRQAIRGPAYMFNEKGTSLTPEEERFLDSAEGNIPVVRKMLEESKTLN  
FNCVDYMGQNALQLAVGNEHLEVTELLKKENLARVGDALLLAISKGYRIVEAILNHPAFAQQRLTSL  
PLEQELRDDDFYAYDEDGTRFSDITPIILAAHCQEYEVHILLKGGARIERPHDYFCKCNECTEKQRKD  
SFSHSRSRMNAYKGLASAAVLSSEDPVLTALEL SNELARLANIETEFKFAHPNCQQQLTMWYENLS  
GLRQQSIAVKFLAVFGVSIGLPFLAIAYWIAPCSKLGRTLRSFPMKFVAHAVSFTIFLGLLVVNASDRFE  
GVKTLNETFTDYPKQIFRVKTTQFSWTEMLIMKWVWLGMIWSECKEIWEEGPREYVHLWNLLDFGMLSI  
FVASFTARFMAFLKATEAQLYVDQHVQDDTLHNVSLPPEVAYFTYARDKWWPSDPQIIESEGLYAIYVLS  
FSRIAYILPANESFGPLQISLGRVTKDIFKFMVIFIMVFVAFMIGMNLYSYRGAKYNPAFTTVEESFK  
TLFWSIFGLSEVISVVLKYDHKFIENIGYVLYGVYVNTMVVLLNMLIAMINNSYQEIIEEDADVEWKFAR  
AKLWLSYFDEGRTPAPFNLVSPKSFYILIMRIKMLIKLCKSKAKSCENDLEMGLNSKFKKTRYQAG  
MRNSENLTANNTLSKPTRYQKIMKRLIKRYVLLKAQVDRENDEVNEGELKEIKQDISSRLYELLEESQAT  
GELADLIQQLSEKFGKLNKDHRLRVNKGKDI

TRTRPLE - GFP Tag - V

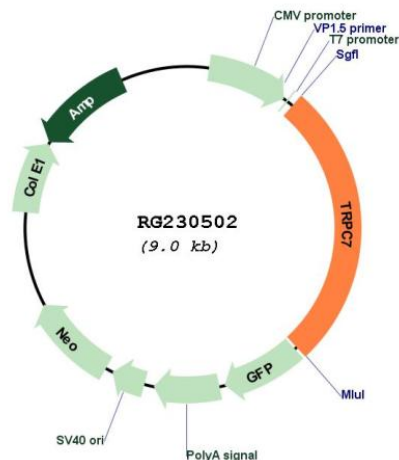
Restriction Sites: Sgfl-MluI

Cloning Scheme:

Cloning sites used for ORF Shutting:



## Plasmid Map:



ACCN: NM\_001167577

ORF Size: 2403 bp

OTI Disclaimer: The molecular sequence of this clone aligns with the gene accession number as a point of reference only. However, individual transcript sequences of the same gene can differ through naturally occurring variations (e.g. polymorphisms), each with its own valid existence. This clone is substantially in agreement with the reference, but a complete review of all prevailing variants is recommended prior to use. [More info](#)

OTI Annotation: This clone was engineered to express the complete ORF with an expression tag. Expression varies depending on the nature of the gene.

Components: The ORF clone is ion-exchange column purified and shipped in a 2D barcoded Matrix tube containing 10ug of transfection-ready, dried plasmid DNA (reconstitute with 100 ul of water).

Reconstitution Method:

1. Centrifuge at 5,000xg for 5min.
2. Carefully open the tube and add 100ul of sterile water to dissolve the DNA.
3. Close the tube and incubate for 10 minutes at room temperature.
4. Briefly vortex the tube and then do a quick spin (less than 5000xg) to concentrate the liquid at the bottom.
5. Store the suspended plasmid at -20°C. The DNA is stable for at least one year from date of shipping when stored at -20°C.

RefSeq: [NM\\_001167577.2](#)

RefSeq Size: 2752 bp

RefSeq ORF: 2406 bp

Locus ID: 57113

UniProt ID: [Q9HCX4](#)

Cytogenetics: 5q31.1

**Protein Families:** Druggable Genome, Ion Channels: Transient receptor potential, Transmembrane

**Gene Summary:** Thought to form a receptor-activated non-selective calcium permeant cation channel. Probably is operated by a phosphatidylinositol second messenger system activated by receptor tyrosine kinases or G-protein coupled receptors. Activated by diacylglycerol (DAG) (By similarity). May also be activated by intracellular calcium store depletion.  
[UniProtKB/Swiss-Prot Function]