

Product datasheet for **RG230501**

DPP10 (NM_001178034) Human Tagged ORF Clone

Product data:

Product Type:	Expression Plasmids
Product Name:	DPP10 (NM_001178034) Human Tagged ORF Clone
Tag:	TurboGFP
Symbol:	DPP10
Synonyms:	DPL2; DPPY; DPRP-3; DPRP3
Mammalian Cell Selection:	Neomycin
Vector:	pCMV6-AC-GFP (PS100010)
E. coli Selection:	Ampicillin (100 ug/mL)



[View online »](#)

ORF Nucleotide Sequence:

>RG230501 representing NM_001178034
 Red=Cloning site Blue=ORF Green=Tags(s)

TTTTGTAATACGACTCACTATAGGGCGGCCGGGAATTCGTCGACTGGATCCGGTACCGAGGAGATCTGCC
 GCC**CGCATCGCC**

ATGACGGCCGCGAAGCAGGAGCCGAGCCACCCCGGGGCCAGGGCAGCCAGGGCAGCCGGCGGACC
 AGGAACTGGGAAGTAACAGCCCTCCACAGAGAACTGGAAGGGAATTGCTATTGCTCTGCTGGTATTTT
 AGTTGTATGCTCACTCATCACTATGTCACTCCTCTTAACCCAGATGAACTCACAAATTCGTCAGAA
 ACCAGATTGTCTTTGGAAGACCTCTTAGGAAAGACTTTGTGCTTCACGATCCAGAGGCTCGGTGGATCA
 ATGATACAGATGTGGTGTATAAAGCGAGAATGGACATGTCATTAACCTGAATATAGAAACAAATGCTAC
 CACATTATTATTGAAAACACAACCTTTTGAACCTTCAAAGCATCAAGACATTCAGTTTCACCAGATTTA
 AAATATGCCTTCTGGCATATGATGTCAAACAGATTTTTCATTATTCGTATACTGCTTCATATGTGATTT
 ACAACATACACTAGGGAAGTTTGGGAGTTAAATCCTCCAGAAGTAGAGGACTCCGTCTTGCAGTACGC
 GGCCTGGGGTGTCCAAGGCAGCAGCTGATTTATATTTTTGAAAATAATATCTACTATCAACCTGATATA
 AAGAGCAGTTTCATTGCGACTGACATCTTCTGAAAAGAAGAAATAATTTTAAATGGGATTGCTGACTGGT
 TATATGAAGAGGAACTCCTGCATTCTCACATCGCCCACTGGTGGTACCAGATGGAGAAAGACTTGCCTT
 CCTGATGATAAATGACTCTTTGGTACCCACCATGGTTATCCCTCGGTTTACTGGAGCGTTGTATCCAAA
 GGAAAGCAGTATCCGTATCCTAAGGCAGGTCAAGTGAACCAACAATAAAATTTATGTTGTAACCTGT
 ATGGACCAACTCACACTTTGGAGCTCATGCCACCTGACAGCTTTAAATCAAGAGAATACTATCACTAT
 GGTTAAATGGGTAAAGCAATACCAAGACTGTGGTAAGATGGTTAAACCGAGCTCAGAACATCTCCATCCTC
 ACAGTCTGTGAGACCCTACAGGTGCTTGTAGTAAAAAATATGAGATGACATCAGATACGTGGCTCTCTC
 AGCAGAATGAGGAGCCCGTGTCTTCTAGAGACGGCAGCAAAATCTTTATGACAGTGCCTGTTAAGCAAGG
 GGGACGTGGAGAATTTACCCACATAGCTATGTTTCTCATCCAGAGTAAAAGTGAGCAAATTAACCGTGGG
 CATCTGACATCAGGAACTGGGAAGTGATAAAGATCTTGGCATACGATGAACTACTCAAAAAATTTACT
 TTCTGAGCACTGAATCTTCTCCAGAGGAAGGCAGCTGTACAGTCTTCTACTGAAGATTATTGAATCG
 CCAATGCATTTTCATGTAATTTTCATGAAAGAACAATGTACATATTTTGTGCCAGTTTTAGTCCCATGAAT
 CAACATTTCTTATTATTCTGTGAAGGTCCAAGGGTCCCAGTGGTCAAGCTACATAGTACGGACAACCCAG
 CAAAATATTTTATTGGAAAGCAATTTCTATGCTGAAGGAAGCTATCCTGAAGAAGAAGTAGGAAAGCC
 AGAAATTAATCCTTCATATTGACGACTATGAACTTCTTTACAGTTGTCCCTTCCCAAAGATTTTATG
 GACCGAAACCAGTATGCTCTTCTGTTAATAATGGATGAAGAACCAGGAGGCCAGCTGGTTACAGATAAGT
 TCCATATTGACTGGGATTCCTACTCATTGACATGGATAATGTCATTGTAGCAAGATTTGATGGCAGAGG
 AAGTGGATTCCAGGGTCTGAAAATTTTGCAGGAGATTCATCGAAGATTAGGTTCAAGTAGAAGTAAAGGAC
 CAAATAACAGCTGTGAAATTTTGTGAACTGCCTTACATTGACTCCAAAAGATTAAGCATTTTTGGAA
 AGGGTTATGGTGGCTATATTGCATCAATGATCTTAAAAACAGATGAAAAGCTTTTAAATGTGGATCCGT
 GGTTGCACCTATCACAGACTTGAATTTGTATGCCTCAGCTTCTCTGAAAGATACCTTGGGATGCCATCT
 AAGGAAGAAGCACTTACCAGGCAGCCAGTGTGCTACATAATGTTTCATGGCTTGAAGAAGAAAAATAT
 TAATAATTCATGGAAGTCTGACACAAAAGTTCATTTCCAACACTCAGCAGAATTAATCAAGCACCTAAT
 AAAAGCTGGAGTGAATTATACTATGCAGGTCTACCCAGATGAAGGTCATAACGTATCTGAGAAGAGCAAG
 TATCATCTCTACAGCACAAATCCTCAAATCTTCAGTGATTGTTTGAAGGAAGAAATATCTGTGCTACCAC
 AGGAACCAGAAGAAGATGAA

ACGCGTACGCGGCCGCTCGAG - GFP Tag - GTTTAA

Protein Sequence: >RG230501 representing NM_001178034
 Red=Cloning site Green=Tags(s)

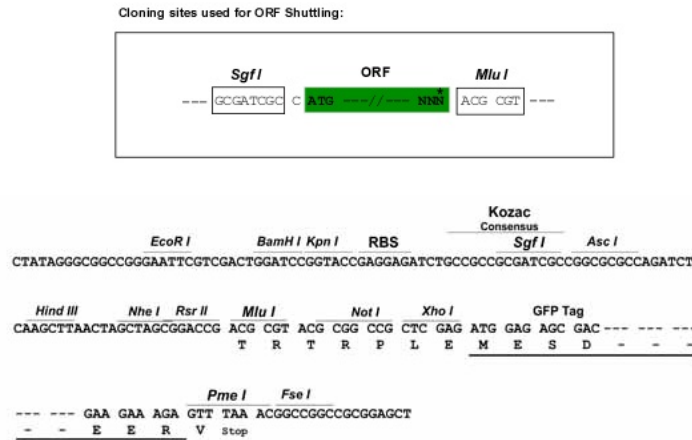
```

MTAAKQEPQPTPGARASQAQPADQELGSNSPPQRNWKGIALLVILVVCSLITMSVILLTPDEL TNSSE
TRL SLEDLFRKDFVLHDPEARWINDTDVVYKSENGHVIKLNIETNATLLENTTFVTFKASRHSVSPDL
KYVLLAYDVKQIFHYSYTASYVIYNIHTREVWELNPPEVEDSVLQYAAWGVQGGQLIYIFENNIYYQPD
KSSSLRLTSSGKEEIIIFNGIADWLYEEELLHSHIAHWWSPDGERLAFLMINDSLVPTMVIPRFTGALY
PK GKQYPYPKAGQVNPITIKLYVYNLYGPTHLELMPPDSFKSREYYITMVKWSNTKTVVRWLNRAQNI
SIL TVCETTTGACSKKYEMTSDTWLSQQNEEPVFSRDGSKFFMTVPVKQGGGREGFHHIAMFLIQSKSE
ITVR HLTSGNWEVIKILAYDETTQKIYFLSTESSPRGRQLYSASTEGLLNQRQCISCNFMKEQCTY
FDASFPMN QHFLLFCEGPRPVVSLHSTDNPAKYFILESNSMLKEAILKKKIGKPEIKILHIDDYEL
PLQLSLPKDFM DRNQYALLLIMDEEPGGQLVTDKFHIDWDSVLIDMDNVIVARFDGRGSGFQGLK
ILQEIHRRLGSVEVKD QITAVKFLKLPYIDSKRLSIFGKGYGGYIASMILKSDEKLFKCGSVVAP
ITDLKLYASAFSERYLGMPK KEESTYQAASVLHNVHGLKEENILIIHGTADTKVHFQHS
AELIKHLIKAGVNYTMQVYYPDEGHNVSEKSK YHLYSTILKFFSDCLKEEISVLPQEPEEDE
  
```

TRTRPLE - GFP Tag - V

Restriction Sites: Sgfl-MluI

Cloning Scheme:



ACCN: NM_001178034

ORF Size: 2400 bp

OTI Disclaimer: The molecular sequence of this clone aligns with the gene accession number as a point of reference only. However, individual transcript sequences of the same gene can differ through naturally occurring variations (e.g. polymorphisms), each with its own valid existence. This clone is substantially in agreement with the reference, but a complete review of all prevailing variants is recommended prior to use. [More info](#)

OTI Annotation: This clone was engineered to express the complete ORF with an expression tag. Expression varies depending on the nature of the gene.

Components: The ORF clone is ion-exchange column purified and shipped in a 2D barcoded Matrix tube containing 10ug of transfection-ready, dried plasmid DNA (reconstitute with 100 ul of water).

Reconstitution Method:

1. Centrifuge at 5,000xg for 5min.
2. Carefully open the tube and add 100ul of sterile water to dissolve the DNA.
3. Close the tube and incubate for 10 minutes at room temperature.
4. Briefly vortex the tube and then do a quick spin (less than 5000xg) to concentrate the liquid at the bottom.
5. Store the suspended plasmid at -20°C. The DNA is stable for at least one year from date of shipping when stored at -20°C.

RefSeq: [NM_001178034.1](#), [NP_001171505.1](#)

RefSeq Size: 4829 bp

RefSeq ORF: 2403 bp

Locus ID: 57628

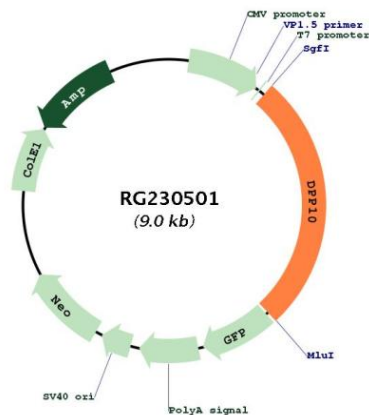
UniProt ID: [Q8N608](#)

Cytogenetics: 2q14.1

Protein Families: Druggable Genome, Protease, Transmembrane

Gene Summary: This gene encodes a single-pass type II membrane protein that is a member of the S9B family in clan SC of the serine proteases. This protein has no detectable protease activity, most likely due to the absence of the conserved serine residue normally present in the catalytic domain of serine proteases. However, it does bind specific voltage-gated potassium channels and alters their expression and biophysical properties. Mutations in this gene have been associated with asthma. Alternate transcriptional splice variants, encoding different isoforms, have been characterized. [provided by RefSeq, Jul 2008]

Product images:



Circular map for RG230501