

Product datasheet for **RG230500**

DPP10 (NM_001178037) Human Tagged ORF Clone

Product data:

Product Type:	Expression Plasmids
Product Name:	DPP10 (NM_001178037) Human Tagged ORF Clone
Tag:	TurboGFP
Symbol:	DPP10
Synonyms:	DPL2; DPPY; DPRP-3; DPRP3
Mammalian Cell Selection:	Neomycin
Vector:	pCMV6-AC-GFP (PS100010)
E. coli Selection:	Ampicillin (100 ug/mL)



[View online »](#)

ORF Nucleotide Sequence:

>RG230500 representing NM_001178037
 Red=Cloning site Blue=ORF Green=Tags(s)

TTTTGTAATACGACTCACTATAGGGCGGCCGGGAATTCGTCGACTGGATCCGGTACCGAGGAGATCTGCC
 GCC**CGCATCGCC**

ATGGTCATCACAGAGGTGGCTGAGGGACCAGTAGATGGTTCTGAAAAGGAACTGGGAAGTAAACAGCCCTC
 CACAGAGAACTGGAAGGGAATTGCTATTGCTCTGCTGGTGATTTTAGTTGTATGCTCACTCATCACTAT
 GTCAGTCATCCTCTTAACCCAGATGAACTCACAAATTCGTCAGAAACCAGATTGCTTTGGAAAGACCTC
 TTTAGGAAAGACTTTGTGCTTCACGATCCAGAGGCTCGGTGGATCAATGATACAGATGTGGTGTATAAAA
 GCGAGAATGGACATGTCATTAACCTGAATATAGAAACAAATGCTACCACATTATTATTGAAAAACACAAC
 TTTTGTAACTTCAAAGCATCAAGACATTCAGTTTCACCAGATTTAAAATATGTCCTTCTGGCATATGAT
 GTCAAACAGATTTTTTATTTCGTATACTGCTTCATATGTGATTTACAACATACACACTAGGGAAGTTT
 GGGAGTTAAATCCTCCAGAAGTAGAGGACTCCGTCTTGCAGTACGCGGCCTGGGGTGTCCAAGGGCAGCA
 GCTGATTTATATTTTGGAAAATAATATCTACTATCAACCTGATATAAAGAGCAGTTTCATTGCGACTGACA
 TCTTCTGGAAAAGAAGAAATAATTTTTAATGGGATTGCTGACTGGTTATATGAAGAGGAACTCCTGCATT
 CTCACATCGCCCACTGGTGGTCACCAGATGGAGAAAGACTTGCCTTCTGATGATAAATGACTCTTTGGT
 ACCCACCATGGTTATCCCTCGGTTTACTGGAGCGTTGTATCCCAAAGGAAAGCAGTATCCGTATCCCTAAG
 GCAGGTCAAGTGAACCCAACAATAAAATTTATATGTTGTAACCTGTATGGACCAACTCACACTTTGGAGC
 TCATGCCACCTGACAGCTTTAAATCAAGAGAATACTATATCACTATGGTTAAATGGGTAAGCAATACCAA
 GACTGTGGTAAGATGGTTAAACCGAGCTCAGAACATCTCCATCCTCACAGTCTGTGAGACCACTACAGGT
 GCTTGTAGTAAAAAATAGAGATGACATCAGATACGTGGCTCTCTCAGCAGAATGAGGAGCCCGTGT
 CTAGAGACGGCAGCAAAATCTTTATGACAGTGCCTGTTAAGCAAGGGGGACGTGGAGAATTTACCACAT
 AGCTATGTTCTCATCCAGAGTAAAAGTGAAGCAAAATACCGTGCAGCATCTGACATCAGGAAACTGGGAA
 GTGATAAAGATCTTGGCATAACGATGAAACTACTCAAAAAATTTACTTTCTGAGCACTGAATCTTCTCCCA
 GAGGAAGGCAGCTGTACAGTGTCTACTGAAGGATTATTGAATCGCCAATGCATTTTATGTAATTTTCA
 GAAAGAACAATGTACATATTTTATGATGCCAGTTTATGCCCATGAATCAACATTTCTTATTATTCTGTGAA
 GGTCCAAGGGTCCCAGTGGTCAGCCTACATAGTACGGACAACCCAGCAAAATATTTTATATTGAAAGCA
 ATTCTATGCTGAAGGAAGCTATCCTGAAGAAGAAGATAGGAAAGCCAGAAATTAATCCTTCATATTGA
 CGACTATGAACTTCCTTTACAGTTGTCCCTTCCCAAAGATTTTATGGACCGAAACCAGTATGCTCTTCTG
 TTAATAATGGATGAAGAACCAGGAGGCCAGCTGGTTACAGATAAGTTCCATATTGACTGGGATCCGTAC
 TCATTGACATGGATAATGTCATTGTAGCAAGATTTGATGGCAGAGGAAGTGGATTCCAGGGTCTGAAAAT
 TTTGCAGGAGATTTCATCGAAGATTAGGTTTCAGTAGAAGTAAAGGACCAAAATACAGCTGTGAAATTTTTG
 CTGAAACTGCCTTACATTGACTCCAAAAGATTAAGCATTTTTTGGAAAGGGTTATGGTGGCTATATTGCAT
 CAATGATCTTAAATCAGATGAAAAGCTTTTTAAATGTGGATCCGTGGTTGCACCTATCACAGACTTGAA
 ATTGTATGCCTCAGCTTCTCTGAAAGATACCTTGGGATGCCATCTAAGGAAGAAAGCACTTACCAGGCA
 GCCAGTGTGCTACATAATGTTTATGGCTTGAAGAAGAAAATATATTAATAATTCATGGAAGTGTGACA
 CAAAAGTTCATTTCCAACACTCAGCAGAATTAATCAAGCACCTAATAAAGCTGGAGTGAATTATACTAT
 GCAGGTCTACCCAGATGAAGGTCAACGTATCTGAGAAGAGCAAGTATCATCTACAGCACAATCCTC
 AAATCTTCAGTGATTGTTTGAAGGAAGAAATATCTGTGCTACCACAGGAACCGAAGAAGATGAA

ACGCGTACGCGGCCGCTCGAG - GFP Tag - GTTTAA

Protein Sequence: >RG230500 representing NM_001178037
 Red=Cloning site Green=Tags(s)

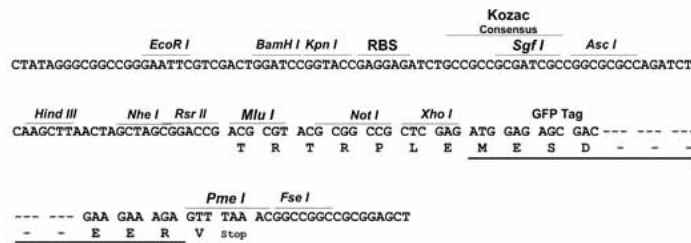
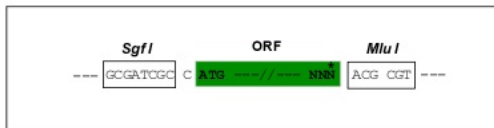
MVITEVAEGPVDGSEKELGNSPPQRNWKGIALLVILVVCSLITMSVILLTPDELTNSETRLSLEDL
 FRKDFVLHDPPEARWINDTDVVYKSENGHVIKLNIEATLTLLENTTFVTFKASRHSVSPDLKYVLLAYD
 VKQIFHYSYTASYVIYNIHTREVWELNPPEVEDSVLQYAAWGVQGGQLIYIFENNIYYQPDIKSSSLRLT
 SSGKEEIIIFNGIADWL YEEELLHSHIAHWWSPDGERLAF LMINDSLVPTMVIPRFTGAL YPKGKQYPYPK
 AGQVNPTIKLYVYNLYGPTHHTLELMPPDSFKSREYYITMVKWSNTKTVVRWLNRAQNISILTVCETTTG
 ACSKKYEMTSDTWL SQQNEEPVFSRDGSKFFMTPVKQGGRGFEFHIIAMFLIQSKSEQITVRHLTSGNWE
 VIKILAYDETTQKIYFLSTESSPRGRQLYSASTEGLLNRQCISCNFMKEQCTYFDASFSMNQHFLLFCE
 GPRVPVSLHSTDNPAKYFILESNSMLKEAILKKKIGKPEIKILHIDDYELPLQLSLPKDFMDRNQYALL
 LIMDEEPGGQLVTDKFHIDWDSVLIDMDNVIVARFDGRGSGFQGLKILQEIHRRLGSVEVKDQITAVKFL
 LKLPYIDSKRLSIFGKGYGGYIASMILKSDEKLFKCGSVVAPITDLKLYASAFSERYLGMPKSKEESTYQA
 ASVLHNVHGLKEENILIIHGTADTKVHFQHSALIKHLIKAGVNYTMQVYPDEGHNVSEKSKYHLYSTIL
 KFFSDCLKEEISVLPQEPEEDE

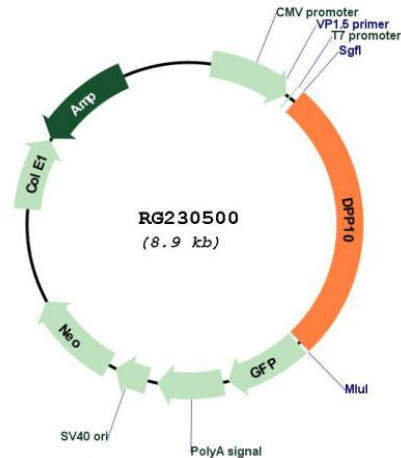
TRTRPLE - GFP Tag - V

Restriction Sites: SgfI-MluI

Cloning Scheme:

Cloning sites used for ORF Shuttling:



Plasmid Map:


ACCN: NM_001178037

ORF Size: 2376 bp

OTI Disclaimer: The molecular sequence of this clone aligns with the gene accession number as a point of reference only. However, individual transcript sequences of the same gene can differ through naturally occurring variations (e.g. polymorphisms), each with its own valid existence. This clone is substantially in agreement with the reference, but a complete review of all prevailing variants is recommended prior to use. [More info](#)

OTI Annotation: This clone was engineered to express the complete ORF with an expression tag. Expression varies depending on the nature of the gene.

Components: The ORF clone is ion-exchange column purified and shipped in a 2D barcoded Matrix tube containing 10ug of transfection-ready, dried plasmid DNA (reconstitute with 100 ul of water).

Reconstitution Method:

1. Centrifuge at 5,000xg for 5min.
2. Carefully open the tube and add 100ul of sterile water to dissolve the DNA.
3. Close the tube and incubate for 10 minutes at room temperature.
4. Briefly vortex the tube and then do a quick spin (less than 5000xg) to concentrate the liquid at the bottom.
5. Store the suspended plasmid at -20°C. The DNA is stable for at least one year from date of shipping when stored at -20°C.

RefSeq: [NM_001178037.1](#), [NP_001171508.1](#)

RefSeq Size: 4857 bp

RefSeq ORF: 2379 bp

Locus ID: 57628

Cytogenetics: 2q14.1

Protein Families: Druggable Genome, Protease, Transmembrane

Gene Summary:

This gene encodes a single-pass type II membrane protein that is a member of the S9B family in clan SC of the serine proteases. This protein has no detectable protease activity, most likely due to the absence of the conserved serine residue normally present in the catalytic domain of serine proteases. However, it does bind specific voltage-gated potassium channels and alters their expression and biophysical properties. Mutations in this gene have been associated with asthma. Alternate transcriptional splice variants, encoding different isoforms, have been characterized. [provided by RefSeq, Jul 2008]