

Product datasheet for **RG230493**

PFKM (NM_001166688) Human Tagged ORF Clone

Product data:

Product Type:	Expression Plasmids
Product Name:	PFKM (NM_001166688) Human Tagged ORF Clone
Tag:	TurboGFP
Symbol:	PFKM
Synonyms:	ATP-PFK; GSD7; PFK-1; PFK-A; PFK1; PFKA; PFKX; PPP1R122
Mammalian Cell Selection:	Neomycin
Vector:	pCMV6-AC-GFP (PS100010)
E. coli Selection:	Ampicillin (100 ug/mL)



[View online »](#)

ORF Nucleotide
Sequence:

>RG230493 representing NM_001166688
 Red=Cloning site Blue=ORF Green=Tags(s)

TTTTGTAATACGACTCACTATAGGGCGGCCGGGAATTCGTCGACTGGATCCGGTACCGAGGAGATCTGCC
 GCC**CGCATCGCC**

ATGACCCATGAAGAGCACCATGCAGCCAAAACCTGGGGATTGGCAAAGCCATTGCTGTCTTAACCTCTG
 GTGGAGATGCCCAAGGTATGAATGCTGCTGTCAGGGCTGTGGTTCGAGTTGGTATCTTCACCGGTGCCCG
 TGTCTTCTTTGTCCATGAGGGTTATCAAGGCTGGTGGATGGTGGAGATCACATCAAGGAAGCCACCTGG
 GAGAGCGTTTCGATGATGCTTCAGCTGGGAGGCACGGTATTGGAAGTCCCGGTGCAAGGACTTTCGGG
 AACGAGAAGGACGACTCCGAGCTGCCTACAACCTGGTGAAGCGTGGGATCACCAATCTCTGTGTCATTGG
 GGGTATGGCAGCCTCACTGGGGCTGACACCTCCGTTCTGAGTGGAGTGACTTGTGAGTGACCTCCAG
 AAAGCAGTAAGATCACAGATGAGGAGGCTACGAAGTCCAGCTACCTGAACATTGTGGCCCTGGTTGGGT
 CAATTGACAATGACTTCTGTGGCACCATATGACCATTGGCACTGACTCTGCCCTGCATCGGATCATGGA
 AATTGTAGATGCCATCACTACCACTGCCAGAGCCACCAGAGGACATTTGTGTTAGAAGTAAATGGGCCGC
 CACTGTGGATACCTGGCCCTTGTACCTCTCTGTCTGTGGGGCCGACTGGGTTTTATTCTGAATGTC
 CACCAGATGACGACTGGGAGGAACACCTTTGTCGCCGACTCAGCGAGACAAGGACCCGTGGTTCTCGTCT
 CAACATCATATTGTGGCTGAGGGTGAATTGACAAGAATGAAAAACCAATCACCTCAGAAGACATCAAG
 AATCTGGTGGTTAAGCGTCTGGGATATGACACCCGGGTTACTGTCTTGGGCGATGTGCAGAGGGGTGGGA
 CGCCATCAGCCTTTGACAGAATTCTGGGACGAGGATGGGTGTGGAAGCAGTGTGGCACTTTTGGAGGG
 GACCCAGATACCCAGCCTGTGTAGTGAGCCTCTCTGGTAACCAGGCTGTGCGCCTGCCCTCATGGAA
 TGTGTCCAGGTGACCAAGATGTGACCAAGGCCATGGATGAGAAGAAATTTGACGAAGCCCTGAAGCTGA
 GAGGCCGAGCTTCATGAACAACCTGGGAGGTGTACAAGCTTCTAGCTCATGTCAGACCCCGGTATCTAA
 GAGTGGTTCGCACACAGTGGCTGTGATGAACGTGGGGGCTCCGGCTGCAGGCATGAATGCTGTCTGTCG
 TCCACTGTGAGGATTGGCCTTATCCAGGGCAACCGAGTGTCTCGTTGTCCATGATGGTTTCGAGGGCCTGG
 CCAAGGGGAGATAGAGGAAGCTGGCTGGAGCTATGTTGGGGGCTGGACTGGCCAAGGTGGCTCTAAACT
 TGGGACTAAAAGGACTCTACCAAGAAGAGCTTTGAACAGATCAGTGCCAATATAACTAAGTTTAACATT
 CAGGGCCTTGTGCATATTGGGGCTTTGAGGCTTACACAGGGGCTGGAAGTGTGGAGGGCAGGAAGC
 AGTTTGTGAGCTCTGCATCCCATTGTGGTCACTCTGCTACAGTCTCCAACAATGTCCCTGGCTCAGA
 CTTGAGCGTTGGGGCTGACACAGCACTCAATACTATCTGCACAACCTGTGACCGCATCAAGCAGTCAGCA
 GCTGGCACAAGCGTCGGGTGTTTATCATTGAGACTATGGGTGGCTACTGTGGCTACCTGGCTACCATGG
 CTGGACTGGCAGCTGGGGCCGATGCTGCCTACATTTTTGAGGAGCCCTTACCATTGAGACCTGCAGGC
 AAATGTTGAACATCTGGTGCAAAAGATGAAAACACTGTGAAAAGGGGCTTGGTGTAAAGGAATGAAAAG
 TGCAATGAGAATATACCACTGACTTCATTTTCAACCTGTACTCTGAGGAGGGGAAGGGCATCTTCGACA
 GCAGGAAGAATGTGCTTGGTGCATGCAGCAGGGTGGGAGCCCAACCCATTTGATAGGAATTTGCCAC
 TAAGATGGGCGCCAAGGCTATGAACTGGATGTCTGGGAAAATCAAAGAGAGTTACCGTAATGGGCGGATC
 TTTGCCAATACTCCAGATTGGGGCTGTCTTCTGGGGATGCGTAAGAGGGCTCTGGTCTTCCAACCAAGTGG
 CTGAGCTGAAGGACCAGACAGATTTTGTGATCGAATCCCAAGGAACAGTGGTGGCTGAACTGAGGCC
 CATCTCAAATCCTAGCCAAGTACGAGATTGACTTGGACACTTCAGACCATGCCACCTGGAGCACATC
 ACCCGGAAGCGGTCCGGGAAGCTGCCGTC

ACGCGTACGCGGCCGCTCGAG - GFP Tag - GTTTAA

Protein Sequence: >RG230493 representing NM_001166688
 Red=Cloning site Green=Tags(s)

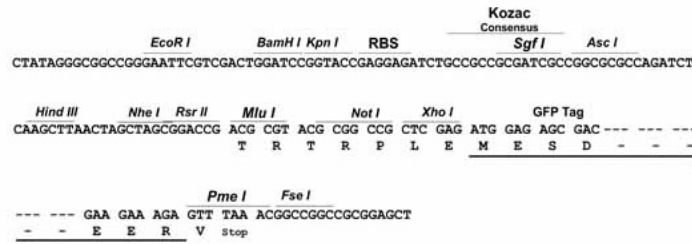
MTHEEHAAKTLGIGKIAVLTSGGDAQGMNAAVRAVVRVGI FTGARVFFVHEGYQGLVDGGDHIKEATW
 ESVSMMLQLGGTVIGSARCKDFRERERGLRAAYNLVKRGITNL CVIGGDGSLTGADTFRSEWSDLLSDLQ
 KAGKITDEEATKSSYLNIVGLVGSIDNDFCGTDMTIGTDSALHRIMEIVDAITTTA QSHQRTFVLEV MGR
 HCGYLALVTSLSGADWVFIPECPPDDWEEHLCRRLSETRTRGRSRLNIIIVAEGAIDKNGKPITSEDIK
 NLVVKRLGYDTRVTVLGHVQRGGTSPAFDRILGSRMGVEAVMALLEGTPDTPACVVVSLSGNQAVRLPLME
 CVQVTKDVTKAMDEKKFDEALKLRGRSFMNNWEVYKLLAHVRPPVSKSGSHTVAVMNVGAPAAGMNAAVR
 STVRIGLIQGNRVLVVDHGFELAKGQIEEAGWSYVGGWTQGGSKLGTKRTL PPKSFEQISANITKFNI
 QGLVIIGGFEAYTGGLELMEGRKQFDEL CIPFVVIPATVSNNVPGSDFSVGADTALNTICTTCDRIKQSA
 AGTKRRVFI IETMGGYCYLATMAGLAAGADAAYIFEFPFTIRDLQANVEHLVQKMKTTVKRGLVLRNEK
 CNENYTTDFIFNLYSEEGKIFDSRKNVLGHMQGGSP TPFDRNFATKMGAKAMNWMGKIKESYRNGRI
 FANTPDSGCVLGMRKRALVFQPAELKDQTD FEHRIPKEQWLLKLRPILKILAKYEIDLDTSDHAHLEHI
 TRKRSGEAAV

TRTRPLE - GFP Tag - V

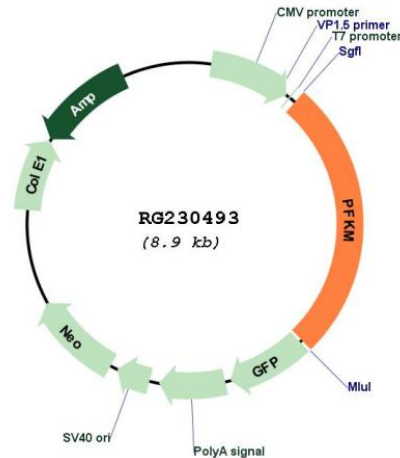
Restriction Sites: SgfI-MluI

Cloning Scheme:

Cloning sites used for ORF Shuttling:



Plasmid Map:



ACCN: NM_001166688

ORF Size: 2340 bp

OTI Disclaimer: The molecular sequence of this clone aligns with the gene accession number as a point of reference only. However, individual transcript sequences of the same gene can differ through naturally occurring variations (e.g. polymorphisms), each with its own valid existence. This clone is substantially in agreement with the reference, but a complete review of all prevailing variants is recommended prior to use. [More info](#)

OTI Annotation: This clone was engineered to express the complete ORF with an expression tag. Expression varies depending on the nature of the gene.

Components: The ORF clone is ion-exchange column purified and shipped in a 2D barcoded Matrix tube containing 10ug of transfection-ready, dried plasmid DNA (reconstitute with 100 ul of water).

Reconstitution Method:

1. Centrifuge at 5,000xg for 5min.
2. Carefully open the tube and add 100ul of sterile water to dissolve the DNA.
3. Close the tube and incubate for 10 minutes at room temperature.
4. Briefly vortex the tube and then do a quick spin (less than 5000xg) to concentrate the liquid at the bottom.
5. Store the suspended plasmid at -20°C. The DNA is stable for at least one year from date of shipping when stored at -20°C.

RefSeq: [NM_001166688.1](#), [NP_001160160.1](#)

RefSeq Size: 3177 bp

RefSeq ORF: 2343 bp

Locus ID: 5213

UniProt ID: [P08237](#)

Cytogenetics: 12q13.11

Protein Families:	Druggable Genome
Protein Pathways:	Fructose and mannose metabolism, Galactose metabolism, Glycolysis / Gluconeogenesis, Metabolic pathways, Pentose phosphate pathway
Gene Summary:	<p>Three phosphofructokinase isozymes exist in humans: muscle, liver and platelet. These isozymes function as subunits of the mammalian tetramer phosphofructokinase, which catalyzes the phosphorylation of fructose-6-phosphate to fructose-1,6-bisphosphate. Tetramer composition varies depending on tissue type. This gene encodes the muscle-type isozyme. Mutations in this gene have been associated with glycogen storage disease type VII, also known as Tarui disease. Alternatively spliced transcript variants have been described. [provided by RefSeq, Nov 2009]</p>