

Product datasheet for **RG230488**

MUSK (NM_001166281) Human Tagged ORF Clone

Product data:

| | |
|---------------------------|--|
| Product Type: | Expression Plasmids |
| Product Name: | MUSK (NM_001166281) Human Tagged ORF Clone |
| Tag: | TurboGFP |
| Symbol: | MUSK |
| Synonyms: | CMS9; FADS; FADS1 |
| Mammalian Cell Selection: | Neomycin |
| Vector: | pCMV6-AC-GFP (PS100010) |
| E. coli Selection: | Ampicillin (100 ug/mL) |



[View online »](#)

**ORF Nucleotide
Sequence:**

>RG230488 representing NM_001166281
 Red=Cloning site Blue=ORF Green=Tags(s)

TTTTGTAATACGACTCACTATAGGGCGGCCGGAATTCGTCGACTGGATCCGGTACCGAGGAGATCTGCC
 GCC**CGGATCGCC**

ATGAGAGAGCTCGTCAACATTCCACTGGTACATATTCTTACTCTGGTTGCCTTCAGCGGAACTGAGAAAC
 TTCAAAAAGCTCCTGTCAACCACTCCTCTTGAACAGTGGATGCCTTAGTTGAAGAAGTGGCTACTTT
 CATGTGTGCACTGGAATCCTACCCCGAGCTGAGATTTCTGGACTAGAAATAAAATTCTCATTAAGCTC
 TTTGACACCCGGTACAGCATCCGGGAGAATGGGCAGCTCCTCACCATCCTGAGTGTGGAAGACAGTGATG
 ATGGCATTACTGCTGCACGGCCAACAATGGTGTGGGAGGAGCTGTGGAGAGTTGTGGAGCCCTGCAAGT
 GAAGATGAAACCTAAAATAACTCGTCTCCATAAATGTGAAAATAATAGAGGGATTAAGAGCAGTCCTA
 CCATGTACTACAATGGGTAATCCCAAACCATCAGTGTCTGGATAAAGGGAGACAGCCCTCTCAGGGAAA
 ATTCCCGAATTGCAGTTCTTGAATCTGGGAGCTTGAGGATTCATAACGTACAAAAGGAAGATGCAGGACA
 GTATCGATGTGTGCAAAAACAGCCTCGGGACAGCATATTCAAAGTGGTGAAGCTGGAAGTTGAGGTT
 TTTGCCAGGATCCTGCGGGCTCCTGAATCCCACAATGTCACCTTTGGCTCCTTTGTGACCCCTGCACTGTA
 CAGCAACAGGCATTCTGTCCCCACCATCACCTGGATTGAAAACGAAATGCTGTTTCTTCTGGGTCCAT
 TCAAGAGAGTGTGAAAGACCGAGTGATTGACTCAAGACTGCAGCTGTTTATCACCAAGCCAGGACTCTAC
 ACATGCATAGCTACCAATAAGCATGGGGAGAAGTTCAGTACTGCCAAGGCTGCAGCCACCATCAGCATAG
 CAGAATGGAGAGAGTACTGCTTGGCAGTAAAGGAGCTCTTCTGCGCAAAAGAATGGCTGGTAATGGAAGA
 GAAGACCCACAGAGGACTCTACAGATCCGAGATGCATTTGCTGTCCGTGCCAGAATGCAGCAAGCTTCCC
 AGCATGCATTGGGACCCACGGCCTGTGCCAGACTGCCACATCTAGCATTCCCACCAATGACGTCCTCAA
 AGCCAAGTGTGGACATTCCAAATCTGCCTTCTCCTCTTCTTCTTCTTCTGTCTCACACTACTACTC
 CATGACTGTAATAATCTCCATCATGTCCAGCTTTGCAATATTTGTGCTTCTTACCATAACTACTCTCTAT
 TGCTGCCGAAGAAGAAAACAATGAAAAATAAGAAAAGAGAATCAGCAGCAGTAACCCTCACCACTGC
 CTTCTGAGCTCTTACTAGATAGACTTCATCCCAACCCATGTACCAGAGGATGCCGCTCCTTCTGAACCC
 CAAATTGCTCAGCCTGGAGTATCCAAGGAATAACATTGAATATGTGAGAGACATCGGAGAGGGAGCGTTT
 GGAAGGGTGTTCAGCAAGGGCACCAGGCTTACTTCCCTATGAACCTTCTACTATGGTGGCAGTAAAGA
 TGCTCAAAGAAGAAGCCTCGGCAGATATGCAAGCGGACTTTCAGAGGGAGGCAGCCCTCATGGCAGAATT
 TGACAACCCTAACATTGTGAAGCTATTAGGAGTGTGTGCTGTCCGGAAGCCAATGTGCCTGCTCTTTGAA
 TACATGGCCTATGGTGACCTCAATGAGTTCCTCCGCAGCATGTCCCTCACACCGTGTGCAGCCTCAGTC
 ACAGTGACTTGTCTATGAGGGCTCAGGTCTCCAGCCCTGGGCCCCACCCCTCTCCTGTGCTGAGCAGCT
 TTGCATTGCCAGGCAGGTGGCAGCTGGCATGGCTTACCTCTCAGAACGTAAGTTTGTTCACCGAGATTTA
 GCCACCAGGAACTGCCTGGTGGGCGAGAACATGGTGGTAAAAATTGCCGACTTTGGCCTCTCCAGGAAACA
 TCTACTCAGCAGACTACTACAAAGCTAATGAAAACGACGCTATCCCTATCCGTTGGATGCCACCAGAGTC
 CATTTTTTATAACCGCTACTACAGAGTCTGATGTGTGGGCCTATGGCGTGGTCTCTGGGAGATCTTC
 TCCTATGGCCTGCAGCCCTACTATGGGATGGCCATGAGGAGGTCATTTACTACGTGCGAGATGGCAACA
 TCCTCTCTGCCCTGAGAACTGCCCGTGGAGCTGTACAACTCATGCGTCTATGTTGGAGCAAGCTGCC
 TGCAGACAGACCAGTTTCACCAGTATTCACCGAATTCTGGAACGCATGTGTGAGAGGGCAGAGGGAACT
 GTGAGTGTC

ACGCGTACGCGGCCGCTCGAG – GFP Tag – GTTTAA

Protein Sequence: >RG230488 representing NM_001166281
 Red=Cloning site Green=Tags(s)

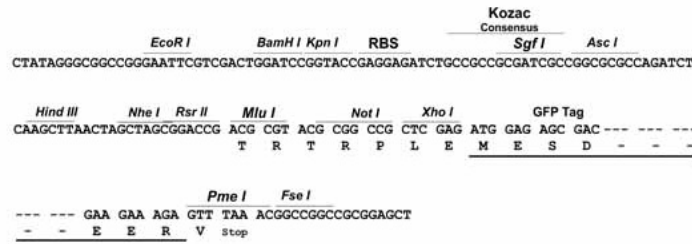
MRELVNIPLVHILTLVAFSGTEKLPKAPVITTPLETVDALVEEVATFMCAVESYPQPEISWTRNKILIKL
 FDTRYSIRENGQLLTILSVEDSDGIYCCTANNGVGGAVESGALQVQKMPKTRPPINVKIEGLKAVL
 PCTTMGNPKPSVSWIKGDSPLRENSRIAVLESGSLRIHNVQKEDAGQYRCVAKNSLGTAYSKVVKLEVEV
 FARILRAPESHNVTFGFSVTLHCTATGIPVPTITWIENGNVSSGSIQESVKDRVIDSRLQLFITKPGLY
 TCIATNKHGEKFSTAKAAATISIAEWREYCLAVKELFCAKEWLVMEEKTHRGLYRSEMHLLSVPECSKLP
 SMHWDPTACARLPHLAFPPMTSSKPSVDIPNLPSSSSSFSVSPTYSMTVVISIMSSFAIFVLLTITTLTY
 CCRRRKQWKNKKRESAAVLTTLTLPSELLDRLHPNPMYQRMPLLLNPKLLSLEYPRNIEYVRDIGEGAF
 GRVFAQARAPGLLPYEPFTMVAVKMLKEEASADMQADFQREAAALMAEFDNPNIVKLLGVCVAGKPMCLLFE
 YMAYGDLNEFLRSMSPHTVCSLSHSDL SMRAQVSSPGPPPLSCAEQLCIARQVAAGMAYLSERKVFVRDL
 ATRNCLVGENMVVKIADFGLSRNIYSADYYKANENDAIPIRWMPPEIFYNRYTTESDVWAYGVVLEWEIF
 SYGLQPYYGMAHEEVIYYVRDGNILSCPENCPVELYNLMRLCWSKLPADRP SFTSIHRILERMCERAEGT
 VSV

TRTRPLE - GFP Tag - V

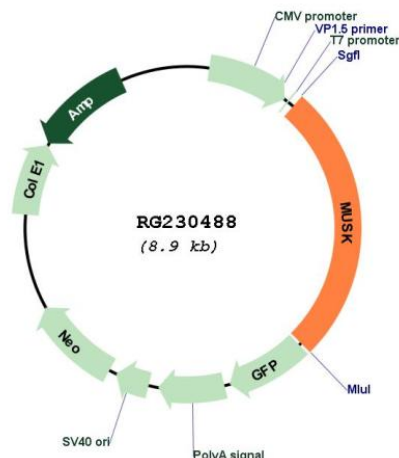
Restriction Sites: SgfI-MluI

Cloning Scheme:

Cloning sites used for ORF Shuttling:



Plasmid Map:



ACCN: NM_001166281

ORF Size: 2319 bp

OTI Disclaimer: Due to the inherent nature of this plasmid, standard methods to replicate additional amounts of DNA in *E. coli* are highly likely to result in mutations and/or rearrangements. Therefore, OriGene does not guarantee the capability to replicate this plasmid DNA. Additional amounts of DNA can be purchased from OriGene with batch-specific, full-sequence verification at a reduced cost. Please contact our customer care team at custsupport@origene.com or by calling 301.340.3188 option 3 for pricing and delivery.

The molecular sequence of this clone aligns with the gene accession number as a point of reference only. However, individual transcript sequences of the same gene can differ through naturally occurring variations (e.g. polymorphisms), each with its own valid existence. This clone is substantially in agreement with the reference, but a complete review of all prevailing variants is recommended prior to use. [More info](#)

OTI Annotation: This clone was engineered to express the complete ORF with an expression tag. Expression varies depending on the nature of the gene.

Components: The ORF clone is ion-exchange column purified and shipped in a 2D barcoded Matrix tube containing 10ug of transfection-ready, dried plasmid DNA (reconstitute with 100 ul of water).

Reconstitution Method:

1. Centrifuge at 5,000xg for 5min.
2. Carefully open the tube and add 100ul of sterile water to dissolve the DNA.
3. Close the tube and incubate for 10 minutes at room temperature.
4. Briefly vortex the tube and then do a quick spin (less than 5000xg) to concentrate the liquid at the bottom.
5. Store the suspended plasmid at -20°C. The DNA is stable for at least one year from date of shipping when stored at -20°C.

| | |
|-------------------|--|
| RefSeq: | NM_001166281.2 |
| RefSeq Size: | 2466 bp |
| RefSeq ORF: | 2322 bp |
| Locus ID: | 4593 |
| UniProt ID: | O15146 |
| Cytogenetics: | 9q31.3 |
| Protein Families: | Druggable Genome, Protein Kinase, Transmembrane |
| Gene Summary: | <p>This gene encodes a muscle-specific tyrosine kinase receptor. The encoded protein may play a role in clustering of the acetylcholine receptor in the postsynaptic neuromuscular junction. Mutations in this gene have been associated with congenital myasthenic syndrome. Alternatively spliced transcript variants have been described.[provided by RefSeq, Oct 2009]</p> |