

Product datasheet for **RG230483**

TRPV4 (NM_001177433) Human Tagged ORF Clone

Product data:

Product Type:	Expression Plasmids
Product Name:	TRPV4 (NM_001177433) Human Tagged ORF Clone
Tag:	TurboGFP
Symbol:	TRPV4
Synonyms:	BCYM3; CMT2C; HMSN2C; OTRPC4; SMAL; SPSMA; SSQTL1; TRP12; VRL2; VROAC
Mammalian Cell Selection:	Neomycin
Vector:	pCMV6-AC-GFP (PS100010)
E. coli Selection:	Ampicillin (100 ug/mL)



[View online »](#)

ORF Nucleotide Sequence:

>RG230483 representing NM_001177433
 Red=Cloning site Blue=ORF Green=Tags(s)

TTTTGTAATACGACTCACTATAGGGCGGCCGGGAATTCGTCGACTGGATCCGGTACCGAGGAGATCTGCC
 GCC**CGCATCGCC**

ATGGCGGATTCCAGCGAAGGCCCGCGCGGGGCCGGGAGGTGGCTGAGCTCCCCGGGATGAGAGTG
 GCACCCAGGTGGGAGGCTTTTCTCTCTCCTCCCTGGCCAATCTGTTGAGGGGGAGGATGGCTCCCT
 TTCGCCCTCACCGGCTGATGCCAGTCGCCCTGCTGGCCAGGCGATGGGCGACCAAACTGCGCATGAAG
 TTCAGGGCGCCTTCCGCAAGGGGGTGCCCAACCCCATCGATCTGCTGGAGTCCACCCTATATGAGTCTT
 CGGTGGTGCCTGGGCCAAGAAAGCACCCATGGACTCACTGTTTGACTACGGCACCTATCGTACCACCTC
 CAGTGACAACAAGAGGTGGAGGAAGAAGATCATAGAGAAGCAGCCGAGAGCCCCAAAGCCCTGCCCT
 CAGCCGCCCCCATCCTCAAAGTCTTCAACCGCCTATCCTCTTTGACATCGTGTCCCGGGCTCCACTG
 CTGACCTGGACGGGCTGCTCCATTCTTGCTGACCCACAAGAACGCCTAACTGATGAGGAGTTTCGAGA
 GCCATCTACGGGAAGACCTGCCTGCCAAGGCCTTGCTGAACCTGAGCAATGGCCGCAACGACACCATC
 CCTGTGCTGCTGGACATCGCGGAGCGCACCGGCAACATGAGGGAGTTCATTAACCTCGCCCTCCGTGACA
 TCTACTATCGAGGGGAGCTGCCCTGTCGCTGGCTGCCTGCACCAACCAGCCCCACATTGTCAACTACCT
 GACGGAGAACCCCAAGAAGGCGGACATGCGGCGCCAGGACTCGCGAGGCAACACAGTGTGCATGCG
 CTGGTGGCCATTGCTGACAACACCCGTGAGAACACCAAGTTTGTACCAAGATGTACGACCTGCTGCTGC
 TCAAGTGTGCCCGCTCTTCCCCGACAGCAACCTGGAGGCCGTGCTCAACAACGACGGCCTCTCGCCCT
 CATGATGGCTGCCAAGACGGGCAAGATTGGGAACCGCCACGAGATGCTGGCTGTGGAGCCATCAATGAA
 CTGCTGCGGGACAAGTGGCGCAAGTTCGGGGCCGTCTCCTTCTACATCAACGTGGTCTCCTACCTGTGTG
 CCATGGTCATCTTCACTCTCACCGCTACTACCAGCCGCTGGAGGGCACACCGCCGTACCCTACCGCAC
 CACGGTGGACTACCTGCGGCTGGCTGGCGAGGTACATTACGCTCTTCACTGGGGTCTCTTCTTACC
 AACATCAAAGACTTGTTTATGAAGAAATGCCCTGGAGTGAATTCTCTTCTTATTGATGGCTCCTTCCAGC
 TGCTCTACTTCTACTCTGTCTGGTATCGTCTCAGCAGCCCTTACCTGGCAGGGATCGAGGCCTA
 CCTGGCCGTGATGGTCTTGGCCCTGGCTGGATGAATGCCCTTACTTACCCGTGGGCTGAAG
 CTGACGGGACCTATAGCATCATGATCCAGAAGATTCTTCAAGGACCTTTTCCGATTCTGCTCGTCT
 ACTTGCTCTTATGATCGGCTACGCTTACGCCCTGGTCTCCCTCCTGAACCCGTGTGCCAATGAAGGT
 GTGCAATGAGGACCAGACCAACTGCACAGTGCCCACTTACCCTCGTGGCGTACAGCGAGACCTTCAGC
 ACCTTCTCCTGGACCTGTTAAGCTGACCATCGGCATGGGCGACCTGGAGATGCTGAGCAGACCAAGT
 ACCCCGTGGTCTTATCATCCTGCTGGTACCTACATCATCCTCACCTTTGTGCTGCTCCTCAACATGCT
 CATTGCCCTCATGGGCGAGACAGTGGGCCAGGTCTCCAAGGAGAGCAAGCACATCTGGAAGCTGCAGTGG
 GCCACCACCATCTGGACATTGAGCGCTCCTTCCCGTATTCTGAGGAAGGCCTTCCGCTCTGGGGAGA
 TGGTCACCGTGGGCAAGAGCTCGGACGGCACTCCTGACCGCAGGTGGTGTTCAGGGTGGATGAGGTGAA
 CTGGTCTCACTGGAACGAACTTGGGCATCATCAACGAGGACCCGGGCAAGAATGAGACCTACCAGTAT
 TATGGCTTCTCGCATACCGTGGGCCGCTCCGCAGGGATCGTGGTCTCGGTGGTACCCCGGTGGTGG
 AACTGAACAAGAACTCGAACCCGGACGAGGTGGTGGTGCCTCTGGACAGCATGGGGAACCCCGCTGCGA
 TGCCACCAGCAGGGTACCCCGCAAGTGGAGGACTGATGACGCCCGCTC

ACGCGTACGCGGCCGCTCGAG - GFP Tag - GTTTAA

Protein Sequence: >RG230483 representing NM_001177433
 Red=Cloning site Green=Tags(s)

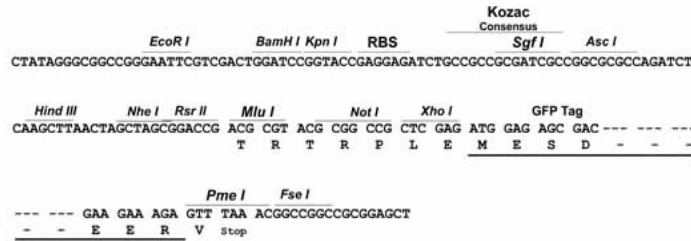
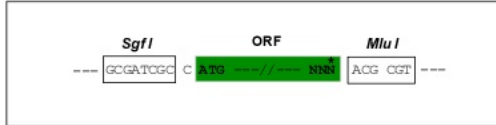
MADSSEGPRAGPGEVAELPGDESGTPGGEAFPLSSLANLFEGEDGSLSPSPADASRPAGPGDGRPNLRMK
 FQGAFRKGVPNPIDLLESTLYESSVVPGPKKAPMDSLFDYGTYRHHSSDNKRWRKKIEKQPQSPKAPAP
 QPPPILKVFNRPIILFDIVSRGSTADLDGLLPFLLTTHKKRLTDEEFREPSTGKTCCLKALLNLSNGRNDTI
 PVLLDIAERTGNMREFINSPFRDIYYRGELPLSLAACTNQPPIVNYLTENPHKKADMRRQDSRGNTVLHA
 LVAIADNTRENTK FVTKMYDLLLLKCARLFPDSNLEAVLNNDGLSPLMMAAKTGKIGNRHEMLAVEPINE
 LLRDKWRKFGAVSFYINVSYLCA MVIFTLTAYYQPLEGTPPYRTTVDYLRRLAGEVITLFTGVLFFFT
 NIKDLFMKKCPGVNSLFDGSGQLLYFIYSVLVIVSAALYLAGIEAYLAVMVFALVLGWMNALYFTRGLK
 LTGTYSIMIQKILFKDLFRLLVYLLFMIGYASALVSLNPCANMKVCNEDQTNCTVPTYPSCRDSETFS
 TFLLDLFLKTIGMGDLEMLSSTKYPVVFILLVTYIILTFVLLNMLIALMGETVGQVSKESKHIWKLQW
 ATTILDIERSFPVFLRKAFRSGEMVTVGKSSDGTDRRWCFRVDEVNWSHWNQNLGIINEDPGKNETYQY
 YGFSHTVGRLRRDRWSSVPRVVELNKNSNPDEVVPLDSMGNPRCDGHQGYPRKWRTDDAPL

TRTRPLE - GFP Tag - V

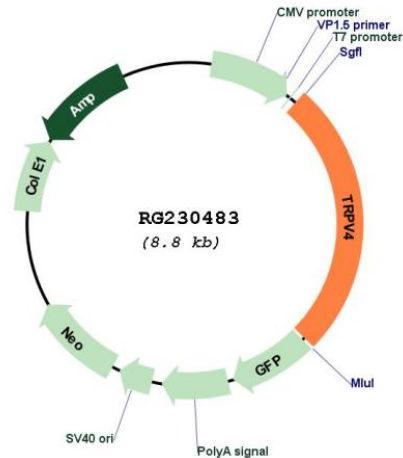
Restriction Sites: SgfI-MluI

Cloning Scheme:

Cloning sites used for ORF Shutting:



Plasmid Map:



ACCN: NM_001177433

ORF Size: 2292 bp

OTI Disclaimer: The molecular sequence of this clone aligns with the gene accession number as a point of reference only. However, individual transcript sequences of the same gene can differ through naturally occurring variations (e.g. polymorphisms), each with its own valid existence. This clone is substantially in agreement with the reference, but a complete review of all prevailing variants is recommended prior to use. [More info](#)

OTI Annotation: This clone was engineered to express the complete ORF with an expression tag. Expression varies depending on the nature of the gene.

Components: The ORF clone is ion-exchange column purified and shipped in a 2D barcoded Matrix tube containing 10ug of transfection-ready, dried plasmid DNA (reconstitute with 100 ul of water).

Reconstitution Method:

1. Centrifuge at 5,000xg for 5min.
2. Carefully open the tube and add 100ul of sterile water to dissolve the DNA.
3. Close the tube and incubate for 10 minutes at room temperature.
4. Briefly vortex the tube and then do a quick spin (less than 5000xg) to concentrate the liquid at the bottom.
5. Store the suspended plasmid at -20°C. The DNA is stable for at least one year from date of shipping when stored at -20°C.

RefSeq: [NM_001177433.1](#), [NP_001170904.1](#)

RefSeq Size: 2871 bp

RefSeq ORF: 2295 bp

Locus ID: 59341

UniProt ID: [Q9HBA0](#)

Cytogenetics: 12q24.11

Protein Families: Druggable Genome, Ion Channels: Transient receptor potential, Transmembrane

Gene Summary: This gene encodes a member of the OSM9-like transient receptor potential channel (OTRPC) subfamily in the transient receptor potential (TRP) superfamily of ion channels. The encoded protein is a Ca²⁺-permeable, nonselective cation channel that is thought to be involved in the regulation of systemic osmotic pressure. Mutations in this gene are the cause of spondylometaphyseal and metatropic dysplasia and hereditary motor and sensory neuropathy type IIC. Multiple transcript variants encoding different isoforms have been found for this gene. [provided by RefSeq, Apr 2010]