

## Product datasheet for **RG230478**

### **MIB2 (NM\_001170689) Human Tagged ORF Clone**

#### **Product data:**

Product Type:	Expression Plasmids
Product Name:	MIB2 (NM_001170689) Human Tagged ORF Clone
Tag:	TurboGFP
Symbol:	MIB2
Synonyms:	ZZANK1; ZZZ5
Mammalian Cell Selection:	Neomycin
Vector:	pCMV6-AC-GFP (PS100010)
E. coli Selection:	Ampicillin (100 ug/mL)



[View online »](#)

**ORF Nucleotide Sequence:**

>RG230478 representing NM\_001170689  
 Red=Cloning site Blue=ORF Green=Tags(s)

TTTTGTAATACGACTCACTATAGGGCGGCCGGAATTCGTCGACTGGATCCGGTACCGAGGAGATCTGCC  
 GCC**CGGATCGCC**

ATGGACCCAGACCCAGGCGGGCTGCAGGTGGGCATGCGGGTGGTGCAGCGCGTGGACTGGAAGTGGG  
 GCCAGCAGGACGGCGCGAGGGCGGCTGGGCACGGTGGTGGAGCTTGGCCGCCACGGCAGCCCTCGAC  
 ACCCGACCGCACAGTGGTCTGTCAGTGGGACCAGGGCACGCGCACCAACTACCGCCGGCTACAGGGC  
 GCGCACGACTGCTGTACGACAACGCCAGATCGGGTCCGGCACCCCAACATCATCTGTGACTGCT  
 GCAAGAAGCACGGGCTGCGGGGATGCGCTGGAAGTGCCGTGTGTGCCTGGACTACGACCTCTGCACGCA  
 GTGCTACATGCACAACAAGCATGAGCTCGCCACGCCCTTCGACCGCTACGAGACCGCTCACTCGCCCT  
 GTCACACTGAGTCCCGCCAGGGCTCCCGAGGATCCACTAAGGGGCATCTCCAGGGAGCGAAGGTGG  
 TCGAGGCCCGACTGGGAGTGGGGCTCACAGGATGGCAAGCCGGCGGAGCTGCAGCGCAGGGTGTGTC  
 TGACAGCCAGCCCTCCAGCACGGGACAAGGTCAAGTGTCTGCTGGACACTGATGTCCTCGGGGAGATG  
 CAGGAAGGCCACGGCGGCTGGAACCCAGGATGGCGGAGTTTATCGGACAGACGGGCACCGTGCATCGTA  
 TCACGGACCGCGGGACGTGCGCGTGCAGTTCAACCACGAGACGCGCTGGACCTCCACCCCGGGCGCT  
 CACCAAGCACCCTCTTCTGGGTGGGCGACGTGGTCCGGGTATCGGCGACCTTGACACAGTGAAGCGG  
 CTGCAGGCTGGGCATGGCGAGTGGACGGACGACATGGCCCTGCCCTGGGCCGCGTGGGAAGGTGGTGA  
 AAGTGTGGAGACGGGAACCTGCGTGTAGCAGTCTGGTGCAGCGGTGGACCTTCAGCCCTCTGCT  
 GGTGGCTACCGCCCGAGGAGGATGCCAACCTGGACGTGGCCGAGCGCGCCCGGAGAACAAGCTCA  
 CTGAGCGTGGCCCTGGACAAGCTTCGGGCCAGAAGAGTGACCCAGAGCACCCGGGAAGGCTGGTGGTGG  
 AGGTGGCGCTGGTAACGCAGCCCGGGCTCTGGACCTGCTGCGGAGGCGCCAGAGCAGGTGGACACCAA  
 GAACCAAGGCAGGACCGCTCTGCAAGTGGCTGCCTACCTGGGCCAGGTGGAGTTGATACGGCTGCTGCTA  
 CAAGCCAGGGCGGGCTGGACCTGCCGGACGACGAGGGCAACACGGCACTGCACTACGCGGCCCTGGGGA  
 ACCAGCCCGAGGCCACAGGGTCTCCTGAGTGTGGGTGCCGGCGGACGCCATCAACAGCACCCAGAG  
 CACAGCACTGCACGTGGCCGTGCAGAGGGGCTTCTGGAGGTGGTGCAGGCGCTGTGTGAGCGGGCTGT  
 GACGTCAACCTGCCCGACGCCACTCGGACACGCCCTGCACTCCGCCATCTCGGCGGGCACTGGAGCCA  
 GCGGCATTGTGAGGTCCTCACGGAGGTGCCAACATCGATGTTACCGCCACCAACAGCCAGGGTTTCAC  
 CCTGCTGCACCATGCCTCCCTCAAGGGTCACGCGCTAGCTGTGAGAAAGATTCTGGCTCGGGCGCGGAG  
 CTGGTGGACGCCAAGAAGGAGGACGGCTTCACGGCGCTGCATCTGGCTGCCCTCAACAACCACCGGAGG  
 TGGCCAGATCCTCATCCGGGAGGGCCGCTGTGACGTGAACGTGCGCAACCGGAAGCTGCAGTCCCGCT  
 GCATCTCGCCGTGCAACAGGCCACGTGGGGCTGGTGGCGCTACTGGTGGACGCTGGGTGCAGTGTCAAC  
 GCCGAGGACGAGGAGGGGACACAGCCCTGCACGTGGCGCTGCAGCGTCACTAGCTGCTGCCCTGGTGG  
 CTGATGGGGCCGGGGGGACCCAGGGCCCTTGACGTGCTGTCCAGGCTACAGGCCTCGGGCTCCCGG  
 CAGCGCGGAGCTGACGGTGGCGCGGGTTCGCTGCTTCTGGCGTGGAGGGCGCCGACGTGAGCTAC  
 ACCAACCCCGGGTGGAGCCCGCTGGACCTGGCCCGGAGGGTCCGCTGCTCAAGGCCCTTCAGGGCT  
 GCGCCAGCGCTCCGAGTCCGCGCGCAGGATGAAGAAGTGCATCAGGTGCCAGGTGGTGTGTCAGCAAGA  
 AACTGCGCCAGACGGCTC

**ACGCGT**ACGCGGCCGCTCGAG - GFP Tag - GTTTAA

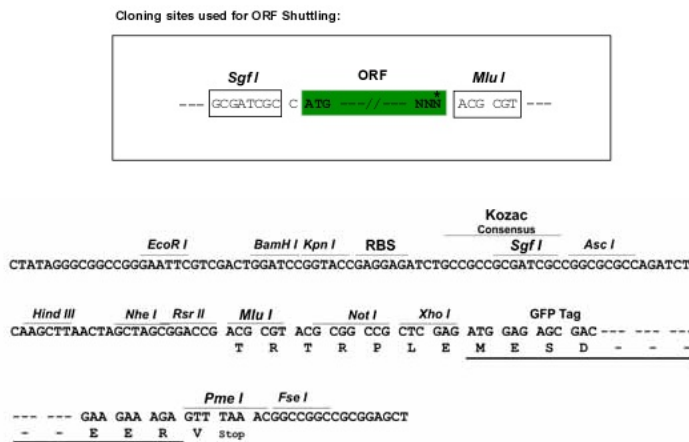
**Protein Sequence:** >RG230478 representing NM\_001170689  
Red=Cloning site Green=Tags(s)

```
MDPDPQAGVQVGMRVVRGVDWKWGQQDGGEGGVTVELGRHGSPSTPDRTVVVQWDQGTRTNYRAGYQG
AHDLLL YDNAQIGVRHPNII CDCKKHLRGMRWKCRVCLDYDLCTQCYMHNKHEL AHAFDRYETAHSRP
VTLSPRQGLPRIPLRGI FQGAKVVRGPDWEWGSQDGKPAELQRRVSADSQPFQHGDKVKCLLDDTDLVREM
QEGHGGWNPMAEF IGQGTVHRITDRGDVVRVQFNHETRWTFHPGALTKHHSFWVGDVVRVIGDLDTVKR
LQAGHGEWTD DMAPALGRVGKVVKVF GDGNLRVAVAGQRWTFSPSCLVAYRPEEDANLDVAERARENKSS
LSVALDKLRAQKSDPEHPGRLVVEVALGNAARALD LRRRPEQVDTKNQGR TALQVAAYLQVVELIRLLL
QARAGVDLPDDEGNTALHYAALGNQPEATRVLLSAGCRADAINSTQSTALHVAVQRFLEVVRLCERGC
DVNLPDAHSDTPLHSAISAGTGASGIVEVLTEVPNIDVTATNSQGFTLLHHSKGHALAVRKILARARQ
LVDAKKEDGFTALHLAALNNHREVAQILIREGRCDVNVNRNKLQSPHLAVQQAHVGLVPLLVDAGCSVN
AEDEEGDTALHVALQRHQLLPLVADGAGDPPGLQLLSRLQASGLPGSAELTVGAAVACFLALEGADVSY
TNHRGRSPLDLAAEGRVLKALQGAQRFVRVRAQDEEVHQVPGGRQQETAPRRL
```

TRTRPLE - GFP Tag - V

**Restriction Sites:** SgfI-MluI

**Cloning Scheme:**



**ACCN:** NM\_001170689

**ORF Size:** 2259 bp

**OTI Disclaimer:** The molecular sequence of this clone aligns with the gene accession number as a point of reference only. However, individual transcript sequences of the same gene can differ through naturally occurring variations (e.g. polymorphisms), each with its own valid existence. This clone is substantially in agreement with the reference, but a complete review of all prevailing variants is recommended prior to use. [More info](#)

**OTI Annotation:** This clone was engineered to express the complete ORF with an expression tag. Expression varies depending on the nature of the gene.

**Components:** The ORF clone is ion-exchange column purified and shipped in a 2D barcoded Matrix tube containing 10ug of transfection-ready, dried plasmid DNA (reconstitute with 100 ul of water).

**Reconstitution Method:**

1. Centrifuge at 5,000xg for 5min.
2. Carefully open the tube and add 100ul of sterile water to dissolve the DNA.
3. Close the tube and incubate for 10 minutes at room temperature.
4. Briefly vortex the tube and then do a quick spin (less than 5000xg) to concentrate the liquid at the bottom.
5. Store the suspended plasmid at -20°C. The DNA is stable for at least one year from date of shipping when stored at -20°C.

**RefSeq:** [NM\\_001170689.2](#)

**RefSeq Size:** 2948 bp

**RefSeq ORF:** 2262 bp

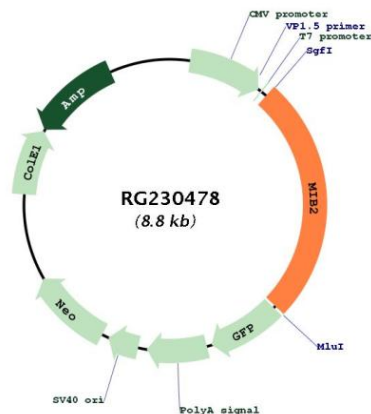
**Locus ID:** 142678

**UniProt ID:** [Q96AX9](#)

**Cytogenetics:** 1p36.33

**Gene Summary:** The protein encoded by this gene is an E3 ubiquitin protein ligase that mediates ubiquitination of proteins in the Notch signaling pathway. The encoded protein may be a suppressor of melanoma invasion. [provided by RefSeq, Mar 2017]

**Product images:**



Circular map for RG230478