

Product datasheet for **RG230477**

Chromosome X open reading frame 6 (MAMLD1) (NM_001177466) Human Tagged ORF Clone

Product data:

Product Type:	Expression Plasmids
Product Name:	Chromosome X open reading frame 6 (MAMLD1) (NM_001177466) Human Tagged ORF Clone
Tag:	TurboGFP
Symbol:	MAMLD1
Synonyms:	CG1; CXorf6; F18; HYSP2
Mammalian Cell Selection:	Neomycin
Vector:	pCMV6-AC-GFP (PS100010)
E. coli Selection:	Ampicillin (100 ug/mL)



[View online »](#)

ORF Nucleotide Sequence:

>RG230477 representing NM_001177466
 Red=Cloning site Blue=ORF Green=Tags(s)

TTTTGTAATACGACTCACTATAGGGCGGCCGGGAATTCGTCGACTGGATCCGGTACCGAGGAGATCTGCC
 GCCGCGATCGCC

ATGGATGACTGGAAAAGTCGGCTTGTAAATCAAGAGCATGCTTCCCATTTCGCCATGGTGGGAAATCGTC
 AGGAGCCCAGAAAAGCTCCAGGAATCGGGAAGCTGTTAAGAGGAGACAAGAAGAAGACCACTTCCAGTTTCC
 AGACATGGCTGATGGGGCTACCTAATAAAAATTAAGAGGCTTGCCTTGAAGATGTCACCCCTGCAATG
 GGCCAGGTGCTCATCTAGTACTGCTTGTGCAGAACTGCAGGTCCTCCATTGACAATAAATCCTAGCC
 CTGCGGCTATGGGAGTGGCTGGCCAGTCATTACTGCTGGAGAATAACCCTATGAATGGCAACATCATGGG
 CTCACCATTTGTAGTACCACAGACTACAGAAGTGGGACTGAAAGGGCCCACTGTTCTTACTATGAGAAA
 ATCAACAGCGTCCGGCTGTAGACCAGGAGCTTCAAGAGCTGCTAGAGGAGCTCACAAAATTCAGACC
 CTTCTCCAAATGAGCTAGATCTTGAGAAGATACTGGGACGAAGCCAGAAGGCCACTGGTTTTAGATCA
 TCCCCAGCAACCCTAAGCACAACCTCCCAAGCCTTCGGTTCAGATGTCACACTTGGAGAGCTGGCTTCC
 AGCAAGGAGTTTCTTCTAGTTGCAGCCAAGTTACTGGCATGTCACCTTCAGATCCCATCCTCCTCCACAG
 GGATCAGCTATTCGATTCTTCCACCAGTAAGCAGATAGTGTACCCGAGTTCTTCAATGGCACAGTCCAA
 GAGCCAGGTCCAGGCCATGCTCCCTGTCGCTCTGCCCCCTTACCAGTGCCTCAGTGGCATCACGCCAC
 CAGCTGAAGGCGTTGGCAGCCAGCAAGCAGGGGTCTGCTACAAAGCAGCAAGGGCCACCCCAAGTTGGT
 CTGGTCTGCCTCCTCCAGGACTCTCTCCACCTTACCGCCAGTGCATCACCCACCCACCACCGCTGCC
 ACTGCCACCACCACCACCCCAATTCAGCCCCAGAGCCTCATGGTGTCTGCATGTCGTCGAATACCTTG
 TCGGGTAGCACTCTCCGAGGCTCTCCAATGCCTTACTGTCAAGCATGACGTCCAGCAGCAATGCTGCC
 TGGGGCCCGCCATGCCCTATGCTCCTGAGAAGCTCCCCAGCCCTGCTCTCACTCAACAGCCGAGTTCGG
 CCCTCAGAGCTCCATTCTTGCCAACCTCATGTCCTCTACCATCAAACCCCTCAAGGACACCTGATGCTCT
 GCTCTGCCTGCCAGCAACCCTGGGCCGTCCCCACCCTATCGCCCAGAGAAGCTCTTAGCCAGGCTTGC
 CACAGCAGTCTTCAACCCACAGTGTCCCTGATCCGAAGCCTCACTCCCACCAGTAATCTTCTAAGCCA
 GCAACAGCAGCAGCAGCAGCAGCAGCAAGCAAATGTGATCTTTAAGCCATAAGCAGCAACTCATCC
 AAAACCTGAGCATGATCATGCAGCAGGGGATGGCAAGCTCCAGCCAGGAGCCACGGAGCCATTTACTT
 TTGGCAACACCAAGCCCTTGTCCATTTTGTCTGAGCCGGTCCCCAGAAGATGCCCTCCATGCCTAC
 CACCTTAGGCAGCCTTCCCTGCTCCACTACCTGCAGCAGCCGACACCAACGCAGGCCTCCTCAGCCACT
 GCCTCCTCCACGGCCACTGCCACCTTGAGCTGCAGCAGCAGCAGCAGCAACAGCAGCAGCAGCCTGACC
 ATTCTTATTCTTCTGCAGCAGATGATGCAGCAACCCAGCGTTTTAGCGATCAGTGGCTCAGATTC
 CATGCCTGCTCTGCCAGACAGGCTGTTGCCATCTGTTTGCATGGACTTCTGCAGCTAGCTCGGTGAAG
 CCCCAGCATCAACACGGGAACTTTTCACTAGCAGGCAAGATCCTCAGCCTGGAGACGTGTACCCGCTCA
 ACATTACTCATGTAGACAAAGCCTGCAAGCTTGGGGAAGCCAGGCACCCCAAGTTCAGCCTCGGGCGACA
 GCCCCGCTCCTGCCAGGCCCTGGGGAGTGTGCTTCTGCCCCGAGCTCCTTTGCTCATGAGCTGGCC
 CGAGTCACCTCCTCGTACAGCACCTCAGAGGCAGCGCCCTGGGGCAGCTGGGATCCGAAGCCTGGAGGC
 AAGTGCCCGCTCCACTACTGCCTAGCTGCGACGCCACAGCAAGAGGAACAGAGATCAGGTCTTATGGCAA
 TGACCCC

ACGCGTACGCGGCCGCTCGAG - GFP Tag - GTTTAA

Protein Sequence: >RG230477 representing NM_001177466
 Red=Cloning site Green=Tags(s)

MDDWKSRLVIKSMPLPHFAMVGNRQEPRKLQESGTVKRRQEEDHFQFPDMADGGYPNKIKRPLEEDVTLAM
 GPGAHPSTACAELQVPLTINPSAAMGVAGQSLLENNPMNGNIMGSPFVVPQTTEVGLKGPTVPYYEK
 INSVPAVDQELQELLEELTKIQDPSPNELDLEKILGTKPEEPLVLDHPQATLSTTPKPSVQMSHLES
 SKEFASSCSQVTGMSLQIPSSSTGISYSIPSTSKQIVSPSSSMAQSKSQVQAML PVALPPLPVPQWHHAH
 QLKALAASKQGSATKQQGPTPSWSGLPPPGLSPPYRVPVSPHPPPLPLPPPPPPFSPQSLMVMSCMSNTL
 SGSTLRGSPNALLSSMTSSSNAALGPAMPYAPEKLPSPALTQQPQFGPQSSILANLMSSTIKTPQGHLM
 ALPASNPGSPPYRPEKLSPPGLPQQSFTPQCSLIRSLTPTSNLLSQQQQQQQQQANVIFKPISSNSS
 KTL SMIMQQGMASSSPGATEPFTFGNTKPLSHFVSEPGPKMPSMPTTSRQPSLLHYLQQPTPTQASAT
 ASSTATATLQ LQQQQQQQQQPDHSSFLLQ QMMQPPQRFQRSVASDSMPALPRQGCHLFAWTSAASSVK
 PQHQHGNSTSRQDPQPGDVSPSNITHVDKACKLGEARHPQVSLGRQPPSCQALGSEFLPGSSFAHELA
 RVTSSYSTSEAAPWGSWDPKAWRQVPAPLLPSCDATARGTEIRSYGNPD

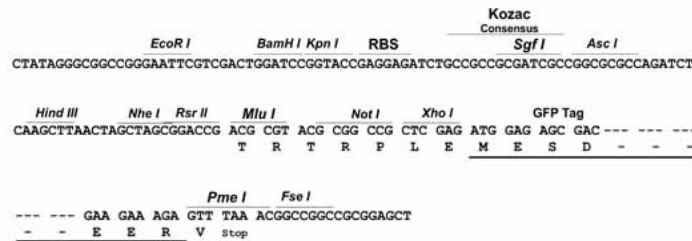
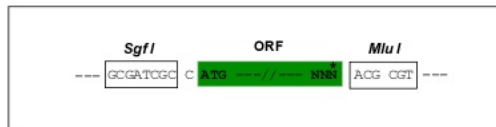
TRTRPLE - GFP Tag - V

Restriction Sites:

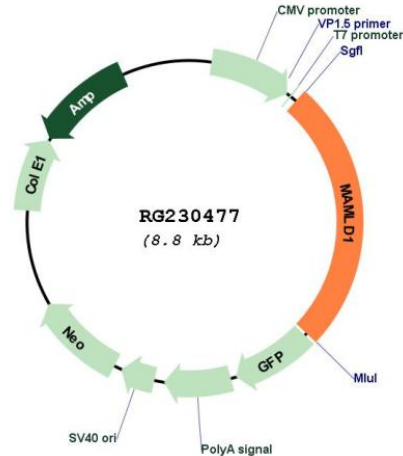
SgfI-MluI

Cloning Scheme:

Cloning sites used for ORF Shutting:



Plasmid Map:



ACCN: NM_001177466

ORF Size: 2247 bp

OTI Disclaimer: The molecular sequence of this clone aligns with the gene accession number as a point of reference only. However, individual transcript sequences of the same gene can differ through naturally occurring variations (e.g. polymorphisms), each with its own valid existence. This clone is substantially in agreement with the reference, but a complete review of all prevailing variants is recommended prior to use. [More info](#)

OTI Annotation: This clone was engineered to express the complete ORF with an expression tag. Expression varies depending on the nature of the gene.

Components: The ORF clone is ion-exchange column purified and shipped in a 2D barcoded Matrix tube containing 10ug of transfection-ready, dried plasmid DNA (reconstitute with 100 ul of water).

Reconstitution Method:

1. Centrifuge at 5,000xg for 5min.
2. Carefully open the tube and add 100ul of sterile water to dissolve the DNA.
3. Close the tube and incubate for 10 minutes at room temperature.
4. Briefly vortex the tube and then do a quick spin (less than 5000xg) to concentrate the liquid at the bottom.
5. Store the suspended plasmid at -20°C. The DNA is stable for at least one year from date of shipping when stored at -20°C.

RefSeq: [NM_001177466.2](#)

RefSeq Size: 4533 bp

RefSeq ORF: 2250 bp

Locus ID: 10046

UniProt ID: [Q13495](#)

Cytogenetics: Xq28

Gene Summary: This gene encodes a mastermind-like domain containing protein. This protein may function as a transcriptional co-activator. Mutations in this gene are the cause of X-linked hypospadias type 2. Alternate splicing results in multiple transcript variants. [provided by RefSeq, Apr 2010]