

Product datasheet for **RG230471**

NOX5 (NM_001184779) Human Tagged ORF Clone

Product data:

Product Type:	Expression Plasmids
Product Name:	NOX5 (NM_001184779) Human Tagged ORF Clone
Tag:	TurboGFP
Symbol:	NOX5
Mammalian Cell Selection:	Neomycin
Vector:	pCMV6-AC-GFP (PS100010)
E. coli Selection:	Ampicillin (100 ug/mL)



[View online »](#)

ORF Nucleotide Sequence:

>RG230471 representing NM_001184779
 Red=Cloning site Blue=ORF Green=Tags(s)

TTTTGTAATACGACTCACTATAGGGCGGCCGGAATTCGTCGACTGGATCCGGTACCGAGGAGATCTGCC
 GCC**CGGATCGCC**

ATGAACACATCTGGAGACCCAGCCAGACGGGCCCTGAAGGCTGTAGAGGCACCATGAGTGCCGAGGAGG
 ATGCCAGGTGGCTCCGGTGGGTGACTCAGCAGTTTAAGACCATTGCAGGAGAAGATGGGGAGATCAGCCT
 GCAAGAATTCAAAGCAGCTCTGCATGTAAAGAGTCCTTCTTTGCAGAGCGATTCTTTGCCCTATTTGAC
 TCCGATAGAAGTGGCACCATCACCTCCAGGAGCTGCAGGAGGCACTGACCCTGCTCATCCATGGCAGCC
 CCATGGACAAACTCAAATTCCTCTTCCAGGTGTATGACATCGATGGCAGTGGCTCCATTGACCCGGATGA
 GCTGCGCACTGTGCTGCAGTCGTGTCTGCGCGAGAGCGCCATCTCGTGCCTGACGAGAAGCTGGACCAG
 CTGACGCTGGCGCTTTCGAATCGGCCGACGCGGACGGCAACGGGGCCATCACCTTCGAGGAGCTCCGGG
 ACGAGCTGCAGCGCTTCCCGGAGTCATGGAGAACCTGACCATCAGCGCTGCCACTGGCTGACGGCCCC
 CGCCCCCGCCACGCCCGCGCCGGCCGCGCCAGCTGACCGCGCCTACTGGCACAACCACCGCAGCCAG
 CTGTTCTGCCTGGCCACCTATGCAGGCCTCCACGTGCTGCTCTTCGGGCTGGCGGCCAGCGCACCCGGG
 ACCTCGGCGCCAGCGTCATGGTGGCCAAGGGCTGCGGCCAGTGCCTCAACTTCGACTGCAGCTTCATCGC
 GGTGCTGATGCTCAGACGCTGCCTCACCTGGCTGCGGGCCACGTGGCTGGCTCAAGTCTACCACTGGAC
 CAGAACATCCAGTTCACCAGCTTATGGGCTACGTGGTAGTGGGGCTGTCCCTCGTGACACCCGTGGCTC
 AACTGTGAACTTTGTACTCCAGGCTCAGGCGGAGGCCAGCCCTTTCCAGTTCTGGGAGCTGCTGCTCAC
 CACGAGGCTGGCATTGGCTGGGTACACGGTTCGGCTCCCGACAGGTGTCGCTCTGCTGCTGCTGCTC
 CTCCTCATGTTTCATCTGCTCCAGTTCCTGCATCCGAGGAGTGGCCACTTTGAGGTGTTCTATTGGACTC
 ACCTGCTCACTCCTCGTGTGGCTTCTGCTCATCTTTTCATGGGCCCAACTCTGGAAGTGGCTGCTGGT
 GCCTGGAATCTTGTTTTTCTGGAGAAGGCCATCGGACTGGCAGTGTCCCGCATGGCAGCCGTGTGCATC
 ATGGAAGTCAACCTCCTCCCTCCAAGGTCACCTCATCTCCTCATCAAGCGGCCCTTTTTTTCACTATA
 GACCTGGTGACTACTTGTATCTGAACATCCCCACCATTGCTCGCTATGAGTGGCACCCCTTCACCATCAG
 CAGTGCTCCTGAGCAGAAAGACTATCTGGCTGCACATTCGGTCCCAAGGCCAGTGGACAAACAGGCTG
 TATGAGTCTTCAAGGCATCAGACCCACTGGGCCGTGGTCTAAGAGGCTGTCGAGGAGTGTGACAAATGA
 GAAAGAGTCAAAGGTCGTCGAAGGGCTCTGAGATACTTTTGGAGAAACACAAATCTGTAACATCAAGT
 CTACATCGATGGCCTTATGGGACCCCCACCCGAGGATCTTTGCCTCTGAGCATGCCGTGCTCATCGGG
 GCAGGCATCGGCATCACCCCTTTGCTTCCATTCTGCAGAGTATCATGTACAGGCACCAGAAAAGAAAGC
 ATACTTGGCCCAGCTGCCAGCACTCCTGGATCGAAGGTGTCCAAGACAACATGAAGCTCCATAAGGTGGA
 CTTTATCTGGATCAACAGAGACCAGCGGCTTTTCGAGTGGTTTGTGAGCCTGCTGACTAAACTGGAGATG
 GACCAGGCCGAGGAGGCTCAATACGGCCGCTTCTCGAGCTGCATATGTACATGACATCTGCACTGGGCA
 AGAATGACATGAAGGCCATTGGCCTGCAGATGGCCCTTGACCTCTGGCCAACAAGGAGAAGAAAGACTC
 CATCACGGGGCTGCAGACGCGCACCCAGCCTGGGCGGCTGACTGGAGCAAGGTGTTCCAGAAAGTGGCT
 GCTGAGAAGAAGGGCAAGGTGCAGGTCTTCTTCTGTGGCTCCCCAGCTCTGGCCAAGGTGCTGAAGGGCC
 ATTGTGAGAAGTTCGGCTTCAGATTTTTTCCAAGAGAATTC

ACGCGTACGCGGCCGCTCGAG - GFP Tag - GTTTAA

Protein Sequence: >RG230471 representing NM_001184779
 Red=Cloning site Green=Tags(s)

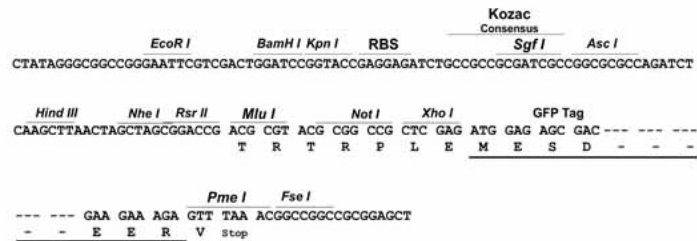
MNTSGDPAQTGPEGCRGTMSAEEDARWLRWVTQQFKTIAGEDGEISLQEFKAALHVKESFFAERFFALFD
 SDRSGTITLQELQEALTLIHGSPMDKLFQVYDIDGSGSIDPDELRTVLQSCRESAISLPDEKLDQ
 LTLALFESADADNGAITFEELRDELQRFPGVMENLTISAAHWL TAPAPRPRRPRRQL TRAYWHNHRSQ
 LFCLATYAGLHVLLFGLAASAHRLGASVMVAKGCGQCLNFDCSFIAVLMRRL TWRATWLAQVLPD
 QNIQFHQLMGYVVVGLSLVHTVAHTVNFVLAQAQAEASPFQWELLLTTRPGIGWVHGSASPTGVALLLLL
 LLMFICSSSICIRRSGHFEVFWTHLSYLLVWLLIFHGNPNFWKLLVPGILFFLEKAIGLAVSRMAAVCI
 MEVNLLPSKVTHLLIKRPPFFHYRPGDYLYLNIPTIARYEWHPF TISSAPEQKDTIWLHIRSQGQWTNRL
 YESFKASDPLGRGSKRLSRVTRMRSQRSSKGSEILLEKHKFCNIKCYIDGPYGTPTRRIFASEHAVLIG
 AGIGITPFASILQSIMYRHQKRKHTCPSCQHSWIEGVQDNMKLHKVDFIWINRDQRSFEWVSLTKLEM
 DQAEAAQYGRFLELHMYMTSALGKNDMKAIGLQMALDLLANKEKKDSITGLQTRTPQGRPDWSKVFQKVA
 AEKKGKVQVFFCGSPALAKVLKGHCCKFGFRFFQENF

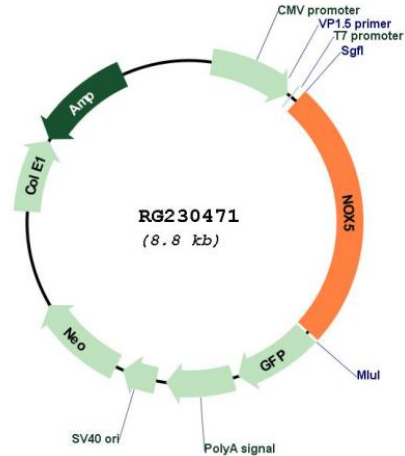
TRTRPLE - GFP Tag - V

Restriction Sites: SgfI-MluI

Cloning Scheme:

Cloning sites used for ORF Shutting:



Plasmid Map:


ACCN: NM_001184779

ORF Size: 2211 bp

OTI Disclaimer: Due to the inherent nature of this plasmid, standard methods to replicate additional amounts of DNA in E. coli are highly likely to result in mutations and/or rearrangements. Therefore, OriGene does not guarantee the capability to replicate this plasmid DNA. Additional amounts of DNA can be purchased from OriGene with batch-specific, full-sequence verification at a reduced cost. Please contact our customer care team at custsupport@origene.com or by calling 301.340.3188 option 3 for pricing and delivery.

The molecular sequence of this clone aligns with the gene accession number as a point of reference only. However, individual transcript sequences of the same gene can differ through naturally occurring variations (e.g. polymorphisms), each with its own valid existence. This clone is substantially in agreement with the reference, but a complete review of all prevailing variants is recommended prior to use. [More info](#)

OTI Annotation: This clone was engineered to express the complete ORF with an expression tag. Expression varies depending on the nature of the gene.

Components: The ORF clone is ion-exchange column purified and shipped in a 2D barcoded Matrix tube containing 10ug of transfection-ready, dried plasmid DNA (reconstitute with 100 ul of water).

Reconstitution Method:

1. Centrifuge at 5,000xg for 5min.
2. Carefully open the tube and add 100ul of sterile water to dissolve the DNA.
3. Close the tube and incubate for 10 minutes at room temperature.
4. Briefly vortex the tube and then do a quick spin (less than 5000xg) to concentrate the liquid at the bottom.
5. Store the suspended plasmid at -20°C. The DNA is stable for at least one year from date of shipping when stored at -20°C.

RefSeq: [NM_001184779.2](#)

RefSeq Size: 2725 bp

RefSeq ORF: 2214 bp

Locus ID: 79400

UniProt ID: [Q96PH1](#)

Cytogenetics: 15q23

Protein Families: Ion Channels: Other, Transmembrane

Gene Summary: This gene is predominantly expressed in the testis and lymphocyte-rich areas of spleen and lymph nodes. It encodes a calcium-dependen NADPH oxidase that generates superoxide, and functions as a calcium-dependent proton channel that may regulate redox-dependent processes in lymphocytes and spermatozoa. Alternatively spliced transcript variants encoding different isoforms have been described for this gene. [provided by RefSeq, Oct 2011]