

Product datasheet for **RG230470**

STAT6 (NM_001178081) Human Tagged ORF Clone

Product data:

Product Type:	Expression Plasmids
Product Name:	STAT6 (NM_001178081) Human Tagged ORF Clone
Tag:	TurboGFP
Symbol:	STAT6
Synonyms:	D12S1644; IL-4-STAT; STAT6B; STAT6C
Mammalian Cell Selection:	Neomycin
Vector:	pCMV6-AC-GFP (PS100010)
E. coli Selection:	Ampicillin (100 ug/mL)



[View online »](#)

Protein Sequence: >RG230470 representing NM_001178081
Red=Cloning site Green=Tags(s)

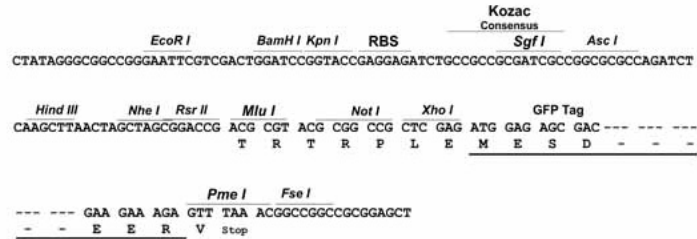
```
MSLWGLVSKMPPEKVQRLYVDFPQHLRHLLGDWLESQPWEFLVGSDAFCCNLASALLSDTVQHLQASVGE
QEGESTILQHISTLESYQRDPLKLVATFRQILQGEKKAVMEQFRHLPMPFHWKQEELKFKTGLRRLQHR
VGEIHLREALQKGAAGQVSLHSLIETPANGTGPSEALAMLLQETTGELEAAKALVLKRIQIWKRQQQL
AGNGAPFEESLAPLQERCESLVDIYSQLQQEVGAAGGELEPKTRASLTGRLDEVLRTLVTSCFLVEKQPP
QVLKTQTKFQAGVRFLGLRFLGAPAKPPLVRADMVTEKQARELSVPQGGGAGAESTGEIINNTVPLENS
IPGNCCSALFKNLLLKKIKRCERKGTESVTEEKCAVLFSASFLLGPGKLPQLQALSLPLVVIHGNQDN
NAKATILWDAFSEMDRVPFVVAERVPWEKMCETLNLKFMAEVGTNRGLLPEHFLFLAQKIFNDNSLSME
AFQHRVSWSQFNKEILLGRGFTFWQWFDGVLDTKRCLRSYWSDRLLIIGFISKQYVTSLLLNEPDGTFLL
LRFSDSEIGGITIAHVIRGQDQSPQIENIQPFSKDLIRSLGDRIRDLAQLKNLYPKPKDEAFRSHYK
PEQMGKDRGYVPATIKMTVERDQPLTPPELQMPMTMVPDYDLGMAPDSSMSMLGPDMPVQVYPPHSHSI
PPYQGLSPEESVNVLSAFQEPHLQMPSSLGQMSLPFDQPHPQGLLPCQPQEHAVSSPDLLCSDVTMVED
SCLSQPVTAFPPQGTWIGEDIFPPLLPPTEQDLTKLLLEGQGESGGGSLGAQPLLQPSHYGQSGISMSHMD
LRANPSW
```

TRTRPLE - GFP Tag - V

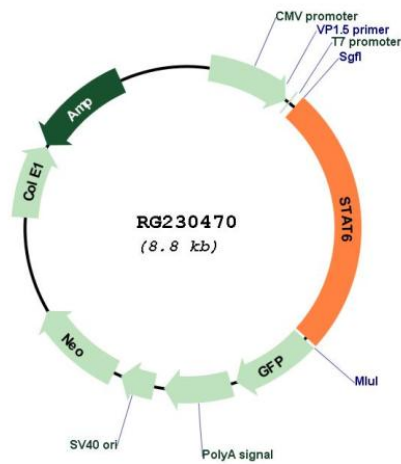
Restriction Sites: Sgfl-MluI

Cloning Scheme:

Cloning sites used for ORF Shutting:



Plasmid Map:



ACCN:	NM_001178081
ORF Size:	2544 bp
OTI Disclaimer:	The molecular sequence of this clone aligns with the gene accession number as a point of reference only. However, individual transcript sequences of the same gene can differ through naturally occurring variations (e.g. polymorphisms), each with its own valid existence. This clone is substantially in agreement with the reference, but a complete review of all prevailing variants is recommended prior to use. More info
OTI Annotation:	This clone was engineered to express the complete ORF with an expression tag. Expression varies depending on the nature of the gene.
Components:	The ORF clone is ion-exchange column purified and shipped in a 2D barcoded Matrix tube containing 10ug of transfection-ready, dried plasmid DNA (reconstitute with 100 ul of water).
Reconstitution Method:	<ol style="list-style-type: none">1. Centrifuge at 5,000xg for 5min.2. Carefully open the tube and add 100ul of sterile water to dissolve the DNA.3. Close the tube and incubate for 10 minutes at room temperature.4. Briefly vortex the tube and then do a quick spin (less than 5000xg) to concentrate the liquid at the bottom.5. Store the suspended plasmid at -20°C. The DNA is stable for at least one year from date of shipping when stored at -20°C.
RefSeq:	NM_001178081.1 , NP_001171552.1
RefSeq Size:	3755 bp
RefSeq ORF:	2214 bp
Locus ID:	6778
Cytogenetics:	12q13.3
Protein Families:	Druggable Genome, ES Cell Differentiation/IPS, Stem cell relevant signaling - DSL/Notch pathway, Stem cell relevant signaling - JAK/STAT signaling pathway, Transcription Factors
Protein Pathways:	Jak-STAT signaling pathway
Gene Summary:	The protein encoded by this gene is a member of the STAT family of transcription factors. In response to cytokines and growth factors, STAT family members are phosphorylated by the receptor associated kinases, and then form homo- or heterodimers that translocate to the cell nucleus where they act as transcription activators. This protein plays a central role in exerting IL4 mediated biological responses. It is found to induce the expression of BCL2L1/BCL-X(L), which is responsible for the anti-apoptotic activity of IL4. Knockout studies in mice suggested the roles of this gene in differentiation of T helper 2 (Th2) cells, expression of cell surface markers, and class switch of immunoglobulins. Alternative splicing results in multiple transcript variants.[provided by RefSeq, May 2010]