

Product datasheet for **RG230468**

FGFR1 (NM_001174066) Human Tagged ORF Clone

Product data:

| | |
|---------------------------|--|
| Product Type: | Expression Plasmids |
| Product Name: | FGFR1 (NM_001174066) Human Tagged ORF Clone |
| Tag: | TurboGFP |
| Symbol: | FGFR1 |
| Synonyms: | bFGF-R-1; BFGFR; CD331; CEK; ECCL; FGFBR; FGFR-1; FLG; FLT-2; FLT2; HBGFR; HH2; HRTFDS; KAL2; N-SAM; OGD |
| Mammalian Cell Selection: | Neomycin |
| Vector: | pCMV6-AC-GFP (PS100010) |
| E. coli Selection: | Ampicillin (100 ug/mL) |



[View online »](#)

ORF Nucleotide
Sequence:

>RG230468 representing NM_001174066
Red=Cloning site Blue=ORF Green=Tags(s)

TTTTGTAATACGACTCACTATAGGGCGGCCGGGAATTCGTCGACTGGATCCGGTACCGAGGAGATCTGCC
GCCGCGATCGCC

ATGTGGAGCTGGAAGTGCCTCCTCTTCTGGGCTGTGCTGGTACAGCCACTCTGCACCGCTAGGCCGT
CCCCGACCTTGCCCTGAACAAGATGCTCTCCCTCCTCGGAGGATGATGATGATGATGACTCCTCTTC
AGAGGAGAAAAGAAACAGATAACACCAAACCAAACCGTATGCCCGTAGCTCCATATTGGACATCCCCAGAA
AAGATGGAAGAAAATTGCATGCAGTGCAGGCTGCCAAGACAGTGAAGTCAAATGCCCTCCAGTGGGA
CCCCAAACCCCACTGCGCTGGTTGAAAAATGGCAAAGAATTCAAACCTGACCACAGAATTGGAGGCTA
CAAGGTCCGTTATGCCACCTGGAGCATCATAATGGACTCTGTGGTGCCTCTGACAAGGGCAACTACACC
TGCATTGTGGAGAATGAGTACGGCAGCATCAACCACACATACCAGCTGGATGTCGTTGGAGCGGTCCCCTC
ACCGGCCATCCTGCAAGCAGGGTTGCCGCCAACAAAACAGTGGCCCTGGGTAGCAACGTGGAGTTCAT
GTGTAAGGTGTACAGTGACCCGACCCGACATCCAGTGGCTAAAGCACATCGAGGTGAATGGGAGCAAG
ATTGGCCAGACAACCTGCCTTATGTCCAGATCTTGAAGACTGCTGGAGTTAATACCACCGACAAAGAGA
TGGAGGTGCTTCACTTAAGAAATGTCTCCTTTGAGGACGACAGGGGAGTATACGTGCTTGGCGGGTAACTC
TATCGGACTCTCCATCACTCTGCATGGTTGACCGTCTTGAAGCCCTGGAAGAGAGGCCCGCAGTGATG
ACCTCGCCCTGTACCTGGAGATCATCATCTATTGCACAGGGGCTTCTCATCTCCTGCATGGTGGGGT
CGGTATCGTCTACAAGATGAAGAGTGGTACCAAGAAGAGTGACTCCACAGCCAGATGGCTGTGCACAA
GCTGGCCAAGAGCATCCCTCTGCGCAGACAGGTAACAGTGTCTGCTGACTCCAGTGCATCCATGAACTCT
GGGTTCTTCTGGTTCGCCATCACGGCTCTCCTCCAGTGGGACTCCCATGTAGCAGGGGTCTCTGAGT
ATGAGCTTCCCAGAACCTCGCTGGGAGCTGCCTCGGGACAGACTGGTCTTAGGCAAACCCCTGGGAGA
GGGCTGCTTTGGCAGGTGGTGTGGCAGAGGCTATCGGGCTGGACAAGGACAAAACCCAAACCGTGTGACC
AAAGTGGCTGTGAAGATGTTGAAGTCCGACGCAACAGAGAAAGACTTGTGACACCTGATCTCAGAAATGG
AGATGATGAAGATGATCGGGAAGCATAAGAATATCATCAACCTGCTGGGGCCTGCACGCAGGATGGTCC
CTTGATGTGATCGTGGAGTATGCCTCAAGGGCAACCTGCGGGAGTACCTGCAGGCCCGGAGGCCCCCA
GGGCTGGAATACTGCTACAACCCAGCCACAACCCAGAGGAGCAGCTCTCCTCAAGGACCTGGTGTCTCT
GCGCTACCAGGTGGCCGAGGCATGGAGTATCTGGCCTCAAGAAGTGCATACCCGAGACCTGGCAGC
CAGGAATGTCTGGTGCAGAGGACAATGTGATGAAGATAGCAGACTTTGGCCTCGCACGGGACATTAC
CACATCGACTACTATAAAAAGACAACCAACGGCCGACTGCCTGTGAAGTGGATGGCACCCGAGGCATTAT
TTGACCGGATCTACCCACCAGAGTGTGTGGTCTTTCGGGGTGTCTCTGTGGGAGATCTTCACTCT
GGGCGGCTCCCCATACCCCGGTGTGCCTGTGGAGGAACCTTTCAAGCTGCTGAAGGAGGGTCAACCGCATG
GACAAGCCAGTAACCTGCACCAACGAGCTGTACATGATGATGCGGGACTGCTGGCATGCAGTGCCCTCAC
AGAGACCCACCTTCAAGCAGCTGGTGAAGACCTGGACCGCATCGTGGCCTTGACCTCAACCCAGGAGTA
CCTGGACCTGTCCATGCCCTGGACCAGTACTCCCCAGCTTCCCGACACCCGGAGCTCTACGTGCTCC
TCAGGGGAGGATCCGTCTTCTCATGAGCCGCTGCCCGAGGAGCCCTGCCTGCCCCGACACCCAGCCC
AGCTTGCCAATGGCGGACTCAAACGCCGC

ACGCGTACGCGGCCGCTCGAG - GFP Tag - GTTTAA

Protein Sequence: >RG230468 representing NM_001174066
 Red=Cloning site Green=Tags(s)

```
MWSWKCLLFWAVLVTATLCTARPSPTLPEQDALPSEDDDDDDSSSEEKEDNTKPNRMPVAPYWTSP
KMEKKLHAVPAAKTVKFKCPSSGTPNPTLRWLKNGKEFKPDHRIGGYKVRATWSIIMDSVVP
SDKGNYSIVENEYGSINHTYQLDVVERSPHRPILQAGLPANKTVALGSNVEFMCKVYSDPQPHIQ
LWKHIEVNGSIGPDNLPYVQILKTAGVNTTDKEMEVLHLRNVSFEDAGEYTCLAGNSIGLSHHS
AWLTVLEALEERPAMTSPLYLEIIYCTGAFLISCMVGSVIVYKMKSGTKKSDFHSMQAVHKLAK
SIPLRRQVTVSADSSASMNSGVLLVRPSRLSSSGTPMLAGVSEYELPEDPRWELPRDRLVLGKPL
GEGCFGQVVLAEAIGLDKDKPNRVTKVAVKMLKSDATEKDLSDLISEMEMMKMIGKHKNIINLL
GACTQDGPLYVIVEYASKGNLREYLQARRPPGLEYCYNPSHNPEEQLSSKDLVSCAYQVARGME
YLASKKCIHRDLAARNVLVTEDNVMIADFLGARDIHHIDYKKTNGRLPVKWMapeALFDRIYTH
QSDVWSFGVLLWEIFTLGGSPYPGPVPEELFKLLKEGHRMDKPSNCTNELYMMMRDCWHAVP
SQRPFTKQLVEDLDRIVALTSNQEYLDLSMPLDQYSPSPFDTRSTCSGSDSVFSHEPLPEEP
CLPRHPAQLANGGLKRR
```

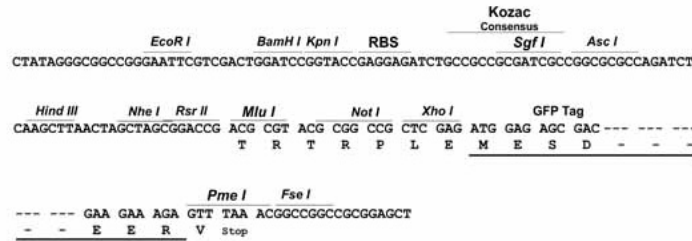
TRTRPLE - GFP Tag - V

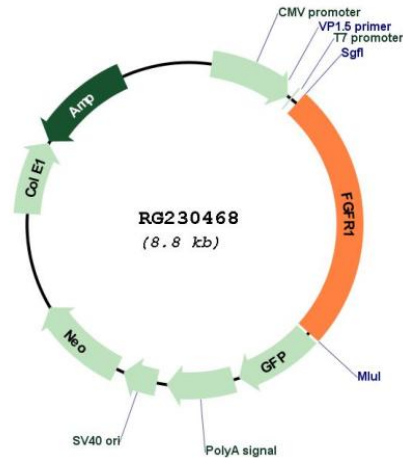
Restriction Sites:

SgfI-MluI

Cloning Scheme:

Cloning sites used for ORF Shutting:



Plasmid Map:


ACCN: NM_001174066

ORF Size: 2199 bp

OTI Disclaimer: The molecular sequence of this clone aligns with the gene accession number as a point of reference only. However, individual transcript sequences of the same gene can differ through naturally occurring variations (e.g. polymorphisms), each with its own valid existence. This clone is substantially in agreement with the reference, but a complete review of all prevailing variants is recommended prior to use. [More info](#)

OTI Annotation: This clone was engineered to express the complete ORF with an expression tag. Expression varies depending on the nature of the gene.

Components: The ORF clone is ion-exchange column purified and shipped in a 2D barcoded Matrix tube containing 10ug of transfection-ready, dried plasmid DNA (reconstitute with 100 ul of water).

Reconstitution Method:

1. Centrifuge at 5,000xg for 5min.
2. Carefully open the tube and add 100ul of sterile water to dissolve the DNA.
3. Close the tube and incubate for 10 minutes at room temperature.
4. Briefly vortex the tube and then do a quick spin (less than 5000xg) to concentrate the liquid at the bottom.
5. Store the suspended plasmid at -20°C. The DNA is stable for at least one year from date of shipping when stored at -20°C.

RefSeq: [NM_001174066.2](#)

RefSeq Size: 4954 bp

RefSeq ORF: 2202 bp

Locus ID: 2260

UniProt ID: [P11362](#)

| | |
|--------------------------|--|
| Cytogenetics: | 8p11.23 |
| Protein Families: | Druggable Genome, Protein Kinase, Transmembrane |
| Protein Pathways: | Adherens junction, MAPK signaling pathway, Melanoma, Pathways in cancer, Prostate cancer, Regulation of actin cytoskeleton |
| Gene Summary: | <p>The protein encoded by this gene is a member of the fibroblast growth factor receptor (FGFR) family, where amino acid sequence is highly conserved between members and throughout evolution. FGFR family members differ from one another in their ligand affinities and tissue distribution. A full-length representative protein consists of an extracellular region, composed of three immunoglobulin-like domains, a single hydrophobic membrane-spanning segment and a cytoplasmic tyrosine kinase domain. The extracellular portion of the protein interacts with fibroblast growth factors, setting in motion a cascade of downstream signals, ultimately influencing mitogenesis and differentiation. This particular family member binds both acidic and basic fibroblast growth factors and is involved in limb induction. Mutations in this gene have been associated with Pfeiffer syndrome, Jackson-Weiss syndrome, Antley-Bixler syndrome, osteoglophonic dysplasia, and autosomal dominant Kallmann syndrome 2. Chromosomal aberrations involving this gene are associated with stem cell myeloproliferative disorder and stem cell leukemia lymphoma syndrome. Alternatively spliced variants which encode different protein isoforms have been described; however, not all variants have been fully characterized. [provided by RefSeq, Jul 2008]</p> |