

## Product datasheet for **RG230463**

### **NOX5 (NM\_001184780) Human Tagged ORF Clone**

#### **Product data:**

Product Type:	Expression Plasmids
Product Name:	NOX5 (NM_001184780) Human Tagged ORF Clone
Tag:	TurboGFP
Symbol:	NOX5
Mammalian Cell Selection:	Neomycin
Vector:	pCMV6-AC-GFP (PS100010)
E. coli Selection:	Ampicillin (100 ug/mL)



[View online »](#)

ORF Nucleotide  
Sequence:

>RG230463 representing NM\_001184780  
Red=Cloning site Blue=ORF Green=Tags(s)

TTTTGTAATACGACTCACTATAGGGCGGCCGGAATTCGTCGACTGGATCCGGTACCGAGGAGATCTGCC  
GCCGCGATCGCC

ATGGCCTTCGTCGTGCCGGCTTATCCGACACCATGAGTGCCGAGGAGGATGCCAGTGGCTCCGGTGGG  
TGA CT CAGCAGTTTAAGACCATTGCAGGAGAAGATGGGGAGATCAGCCTGCAAGAATTCAAAGCAGCTCT  
GCATGTGAAAGAGTCCTTCTTTG CAGAGCGATTCTTTGCCCTATTTGACTCCGATAGAAGTGGCACCATC  
ACCCTCCAGGAGCTGCAGGAGGCACTGACCCTGCTCATCCATGGCAGCCCATGGACAACTCAAATTCC  
TCTTCCAGGTGTATGACATCGATGGCAGTGGCTCCATTGACCCGGATGAGCTGCGCACTGTGCTGCAGTC  
GTGTCTGCGGAGAGCGCCATCTCGCTGCCTGACGAGAAGCTGGACCAGCTGACGCTGGCGCTCTTCGAA  
TCGGCCGACGCGGACGGCAACGGGGCCATCACCTTCGAGGAGCTCCGGGACGAGCTGCAGCGCTTCCCCG  
GAGTCATGGAGAACCTGACCATCAGCGCTGCCACTGGCTGACGGCCCCCGCCCCGCCACGCCCGCG  
CCGGCCGCGCCAGCTGACCCGCGCTACTGGCACAACCACGCGAGCCAGCTGTTCTGCCTGGCCACCTAT  
GCAGGCCCTCCACGTGCTGCTCTTCGGGCTGGCGGCCAGCGCGCACCGGGACCTCGGCGCCAGCGTATGG  
TGGCAAGGGCTGCGGCCAGTGCCTCAACTTCGACTGCAGCTTATCGCGGTGCTGATGCTCAGACGCTG  
CCTCACCTGGCTGCGGGCCACGTGGCTGGCTCAAGTCCTACCACTGGACCAGAACATCCAGTTCCACCAG  
CTTATGGGCTACGTGGTAGTGGGGCTGTCCCTCGTGCACACCGTGGCTCACACTGTGAACTTTGACTCC  
AGGCTCAGGCGGAGGCCAGCCCTTCCAGTTCTGGGAGCTGTGCTCACCACGAGGCCTGGCATTGGCTG  
GGTACACGGTTCGGCCTCCCCGACAGGTGTCGCTCTGCTGCTGCTCCTCCTCATGTTTCTGCTCC  
AGTTCTGCATCCGAGGAGTGGCCACTTTGAGGTGTTCTATTGGACTCACCTGCCTACCTCCTCGTGT  
GGCTTCTGCATCTTTTATGGGCCAACTTCTGGAAGTGGCTGCTGGTGCCTGGAATCTGTTTTTCT  
GGAGAAGGCCATCGACTGGCAGTGTCCCGCATGGCAGCCGTGTGCATCATGGAAGTCAACCTCCTCCCC  
TCCAAGTCACTCATCTCCTCATCAAGCGGCCCTTTTTTTCACTATAGACCTGGTGACTACTGTATC  
TGAACATCCCCACCATTGCTCGCTATGAGTGGCACCCTTACCATCAGCAGTGTCTCTGAGCAGAAAGA  
CACTATCTGGCTGCACATTCGGTCCCAAGGCCAGTGGACAAACAGGCTGTATGAGTCCTTCAAGGCATCA  
GACCCACTGGGCCGTGGTTCTAAGAGGCTGTGAGGAGTGTGACAATGAGAAAGAGTCAAAGTCTGTTCA  
AGGGCTCTGAGATACTTTTGGAGAAACACAAATCTGTAACATCAAGTGTACATCGATGGGCTTATGG  
GACCCCAACCCGAGGATCTTTGCCTCTGAGCATGCCGTGCTCATCGGGCAGGCATCGGCATACCCCC  
TTTGCTTCCATTCTGCAGAGTATCATGTACAGGCACCAGAAAAGAAAGCATACTTGCCCCAGCTGCCAGC  
ACTCCTGGATCGAAGGTGTTCCAAGACAACATGAAGCTCCATAAGGTGGACTTTATCTGGATCAACAGAGA  
CCAGCGGTCTTTTCGAGTGGTTTGTGAGCCTGCTGACTAACTGGAGATGGACCAGGCCGAGGAGGCTCAA  
TACGGCCGCTTCTGGAGCTGCATATGTACATGACATCTGCACTGGGCAAGAATGACATGAAGGCCATTG  
GCCTGCAGATGGCCCTTGACCTCCTGGCCAACAAGGAGAAGAAAGACTCCATCACGGGGCTGCAGACGCG  
CACCCAGCCTGGGCGGCCTGACTGGAGCAAGGTGTTCCAGAAAGTGGCTGCTGAGAAGAAGGCAAGGTG  
CAGGTCTTCTTGTGGCTCCCCAGCTCTGGCCAAGGTGCTGAAGGGCCATTGTGAGAAGTTCGGCTTCA  
GATTTTTCCAAGAGAATTC

ACGCGTACGCGGCCGCTCGAG - GFP Tag - GTTTAA

**Protein Sequence:** >RG230463 representing NM\_001184780  
 Red=Cloning site Green=Tags(s)

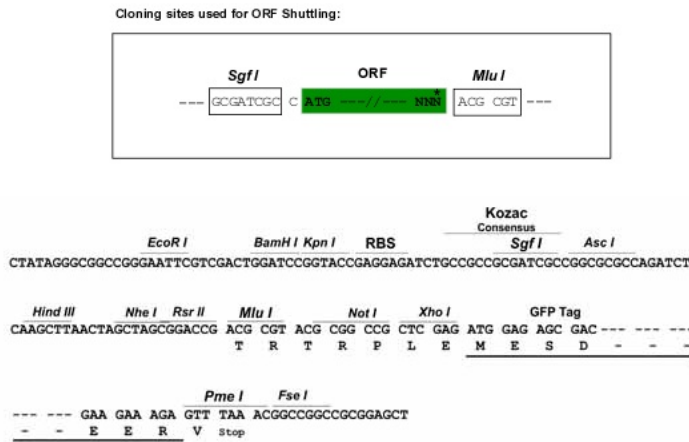
```

MAFVCAGLSDTMSAEEDARWLRWVTQQFKTIAGEDGEISLQEFKAALHVKESFFAERFFALFSDRSRGTI
TLQELQEAL TLLIHGSPMDKLFQVYDIDGSGSIDPDELRTVLQSCLRESAISLPDEKLDQLTLALFE
SADADGNAGAITFEELRDELQRFPGVMENLTISAHHLTAPAPRPRRRRQRLTRAYWHNHRSQLFCLATY
AGLHVLLFGLAASAHRLDGASVMVAKGCGQCLNFDCSFIAVLMRLRCLTWLRATWLAQVLPDQNIQFHQ
LMGYVVVGLSLVHTVAHTVNFVLQAQAEASPFQFWELLLTTRPGIGWVHGSASPTGVALLLLLLLMFICS
SSCIRRSGHFEVFWTHLSYLLVWLLLIFHGPNFWKWLVPVILFFLEKAIGLAVSRMAAVCIMEVNLLP
SKVTHLLIKRPPFFHYRPGDYLNIPTIARYEWHPTISSAPEQKDTIWLHIRSQGWNTNRYESFKAS
DPLGRGSKRLRSVTRMRKSQRSSKGSEILLEKHKFCNIKCYIDGPYGTPTRRIFASEHAVLIGAGIGITP
FASILQSIMYRHQKRKHTCPSCQHSWIEGVQDNMMLHKVDFIWINRDQRSFEWVSLTLKLEMDQAEAAQ
YGRFLELHMYMTSALGKNDMKAIGLQMALDLLANKEKKSITGLQTRTPQGRPDWSKVFQKVAEEKKGKV
QVFFCGSPALAKVLKGHCEKFGFRFFQENF
  
```

TRTRPLE - GFP Tag - V

**Restriction Sites:** SgfI-MluI

**Cloning Scheme:**

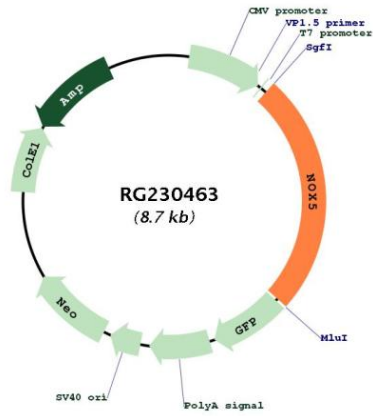


**ACCN:** NM\_001184780

**ORF Size:** 2190 bp

<b>OTI Disclaimer:</b>	<p>Due to the inherent nature of this plasmid, standard methods to replicate additional amounts of DNA in E. coli are highly likely to result in mutations and/or rearrangements. Therefore, OriGene does not guarantee the capability to replicate this plasmid DNA. Additional amounts of DNA can be purchased from OriGene with batch-specific, full-sequence verification at a reduced cost. Please contact our customer care team at <a href="mailto:custsupport@origene.com">custsupport@origene.com</a> or by calling 301.340.3188 option 3 for pricing and delivery.</p> <p>The molecular sequence of this clone aligns with the gene accession number as a point of reference only. However, individual transcript sequences of the same gene can differ through naturally occurring variations (e.g. polymorphisms), each with its own valid existence. This clone is substantially in agreement with the reference, but a complete review of all prevailing variants is recommended prior to use. <a href="#">More info</a></p>
<b>OTI Annotation:</b>	This clone was engineered to express the complete ORF with an expression tag. Expression varies depending on the nature of the gene.
<b>Components:</b>	The ORF clone is ion-exchange column purified and shipped in a 2D barcoded Matrix tube containing 10ug of transfection-ready, dried plasmid DNA (reconstitute with 100 ul of water).
<b>Reconstitution Method:</b>	<ol style="list-style-type: none"> <li>1. Centrifuge at 5,000xg for 5min.</li> <li>2. Carefully open the tube and add 100ul of sterile water to dissolve the DNA.</li> <li>3. Close the tube and incubate for 10 minutes at room temperature.</li> <li>4. Briefly vortex the tube and then do a quick spin (less than 5000xg) to concentrate the liquid at the bottom.</li> <li>5. Store the suspended plasmid at -20°C. The DNA is stable for at least one year from date of shipping when stored at -20°C.</li> </ol>
<b>RefSeq:</b>	<a href="#">NM_001184780.2</a>
<b>RefSeq Size:</b>	2852 bp
<b>RefSeq ORF:</b>	2193 bp
<b>Locus ID:</b>	79400
<b>UniProt ID:</b>	<a href="#">Q96PH1</a>
<b>Cytogenetics:</b>	15q23
<b>Protein Families:</b>	Ion Channels: Other, Transmembrane
<b>Gene Summary:</b>	This gene is predominantly expressed in the testis and lymphocyte-rich areas of spleen and lymph nodes. It encodes a calcium-dependen NADPH oxidase that generates superoxide, and functions as a calcium-dependent proton channel that may regulate redox-dependent processes in lymphocytes and spermatozoa. Alternatively spliced transcript variants encoding different isoforms have been described for this gene. [provided by RefSeq, Oct 2011]

Product images:



Circular map for RG230463