

## Product datasheet for **RG230458**

### Adducin 2 (ADD2) (NM\_001185054) Human Tagged ORF Clone

#### Product data:

Product Type:	Expression Plasmids
Product Name:	Adducin 2 (ADD2) (NM_001185054) Human Tagged ORF Clone
Tag:	TurboGFP
Symbol:	ADD2
Synonyms:	ADDB
Mammalian Cell Selection:	Neomycin
Vector:	pCMV6-AC-GFP (PS100010)
E. coli Selection:	Ampicillin (100 ug/mL)



[View online »](#)

**ORF Nucleotide  
Sequence:**

>RG230458 representing NM\_001185054  
 Red=Cloning site Blue=ORF Green=Tags(s)

TTTTGTAATACGACTCACTATAGGGCGGCCGGGAATTCGTCGACTGGATCCGGTACCGAGGAGATCTGCC  
 GCC**CGGATCGCC**

ATGAGCGAAGAGACGGTCCCCGAGGCTGCCTCGCCGCCGCCCCCGCAGGGGCAGCCTTACTTTGACCGCT  
 TCTCAGAGGACGACCCCGAGTACATGCGCCTTCGCAACCGGGCGGCGACCTGCGGCAGGACTTCAACCT  
 GATGGAGCAGAAGAAGCGCGTCACCATGATCCTGCAGAGTCCCTCTTTACGGGAGGAGCTGGAAGGCCTC  
 ATCCAGGAGCAGATGAAGAAGGGGAACAACTCCTCCAACATCTGGGCCCTGCGACAGATCGCGGACTTCA  
 TGGCCAGCACCTCCACGCAGTCTTCCGACATCTTCCATGAATGTCTCCATGATGACGCCTATCAATGA  
 CCTCCACACAGCTGACTCCCTGAACCTGGCCAAAGGGGAGCGGCTCATGCGGTGCAAGATCAGCAGTGTC  
 TACCGACTCCTGGACCTCTATGGCTGGGCCAGCTGAGTGACACCTATGTCACGTTGAGAGTCAGCAAGG  
 AGCAGGACCACTTCTGATCAGCCCTAAGGGAGTTTCTTGCAGTGAAGTACAGCGTCCAGCCTGATCAA  
 GGTGAACATTCTGGGAGAGGTGGTGGAGAAGGGCAGCAGCTGCTTCCAGTGGACACCACAGGCTTCTGT  
 CTGCACTCGGCCATCTATGCAGCGAGGCCCGACGTGCGCTGCATCATCCACCTGCACACACCGGCCACAG  
 CAGCGGTGTCGGCCATGAAGTGGGGCTCCTGCCTGTCTCCACAAATGCCTGCTGGTGGGGGACATGGC  
 CTATTATGACTTCAATGGGGAAATGGAGCAGGAAGCCGATCGGATCAACCTGCAGAAGTGCCCTTGGACCC  
 ACCTGCAAGATCCTGGTCTAAGAAACCATGGAGTGGTTGCTCTGGGTGACACGGTAGAGGAGGCATTTT  
 ACAAGATCTTCCACCTGCAGGCTGCATGTGAGATACAGGTGTGGCTCTGTCCAGTGCAGGGGGAGTGGA  
 GAACCTCATCCTCTGGAGCAGGAGAAGCACCGGCCCATGAGGTGGGCTCCGTGCAGTGGGCCGGGAGC  
 ACCTTTGGGCTATGCAGAAGAGTCGGCTGGGGGAGCATGAGTTTGAGGCCCTCATGAGGATGCTGGACA  
 GGTTGGGATCCAGCCACGGTACAGCCTTCTGTGTTGAGGAGGACGGTGCCTCCGGTGCCTCCCTGCGA  
 CAGCATGCCCAGAAGCAGCAGAAGGAGAAGACCCGCTGGCTCAATACGCCCAACACCTACCTGCGGGTCA  
 ATGTGGCCGATGAGGTCCAGAGGAGCATGGGCAGCCCCGACCCAAGACCACGTGGATGAAGGCTGACGA  
 GGTGGAGAAATCCAGCAGTGGCATGCCGATTGCGATCGAAAACCAACCAATTTGTGCCTCTCTATACT  
 GACCCCAAGGAGTACTGGAGATGAGGAACAAGATTCGAGAACAACCAAGCAAGATGTGAAGTCAAGCGG  
 GGCCTCAGTCCCAGTCTTGGCGAGCGTATTGCCGAGAAGAGCCGAAGCCCGTCTACAGAGAGCCAGCT  
 GATGTCCAAGGGAGACGAGGATACCAAAGACGATTGAGAGGAGACGGTGCCCAACCCCTTACGCCAACTC  
 ACTGACCAGGAGTTGGAGGAGTACAAGAAAGAGGTGGAGAGGAAGAACTAGAATTGATGGAGAGAAAG  
 AAAGTGCAGGAGAGCCTGGCTCACCTGCAAAGTCTGCACCTGCTTCTCCAGTGCAGAGCCAGCGAA  
 GGAGGCAGAGACAAGAGCCCTTGTAGTCTCCTTCCAAGTCTTGTAGAGGAAGGTAAGAAAGACAGAA  
 ACAAGCAAAGCCGCCACCACAGAGCCGAAACAACCCAGCCGGAAGGGTGGTGGTCAACGGGAGGGAGG  
 AGGAGCAGACGGCAGAGGAAATCCTCAGCAAAGGCCTGAGCCAGATGACCACCAAGTGTGACACGGATGT  
 TGATACCTCTAAGGACAAAACCGAGTCGGTCCAGCGGCCCATGTCCCAGAGGGCTCACCTTCCAAG  
 TCTCCCTCAAAGAAGAAAAGAAATCCGAACCCCTCCTTCTGAAAAGAGCAAAAAGGAGAAAG  
 TGGAGTCC

**ACGCGT**ACGCGGCCGCTCGAG – GFP Tag – GTTTAA

**Protein Sequence:** >RG230458 representing NM\_001185054  
 Red=Cloning site Green=Tags(s)

MSEETVPEAASPPPPQGQPYFDRFSEDDPEYMRLNRNRAADLRQDFNLMEQKRVTMILQSPSFREEEGL  
 IQEQMKGNNSSNIWALRQIADFMASHTSHAVFPTSSMNVSMMPINDLHTADSLNLAAGERLMRCKISSV  
 YRLLDLYGWAQLSDTYVTLRVSKEQDHFLLISPKGVSCSEVTASSLIKVNILGEVVEKGSSCFVDTTGFC  
 LHSAIYAARPDVRCIIHLHTPATAAVSAMKWGLLPVSHNALLVGDMAYYDFNGEMEQEADRINLQKCLGP  
 TCKILVLRNHGVVALGDTVVEAFYKIFHLQAACEIQVSALSSAGGVENLILLEQEKHRPHEVGSVQWAGS  
 TFGPMQKSRLGEHEFEALMRMLDNLGYRTGYTYRHPFVQEKTKHKSEVEIPATVTAFFVFEEDGAPVPALR  
 QHAQKQKQEKTRWLNTPNTYL RVNVADEVQRSMGSPRPKTTWMKADEVKSSSGMPIRIENPNQFVPLYT  
 DPQEVLEMRNKIREQNRQDVKSAGPQSLLASVIAEKSRSPSTESQLMSKGDEDTKDDSEETVPNPFSQL  
 TDQLEEEYKKEVERKKLELDGEEKETAPEEPGSPAKSAPASPVQSPAKEAETKSPLVSPSKSLEEGTKKTE  
 TSKAATPETTQPEGVVVNGREEEQTAEEILSKGLSQMTTSADTDVDTSKDKTESVTS GPMSPGSPSK  
 SPSKSKKKFRTPSFLKSKKKEKVES

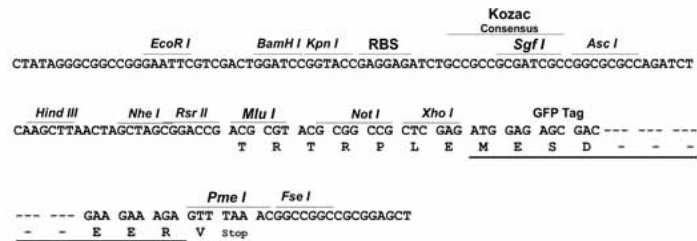
TRTRPLE - GFP Tag - V

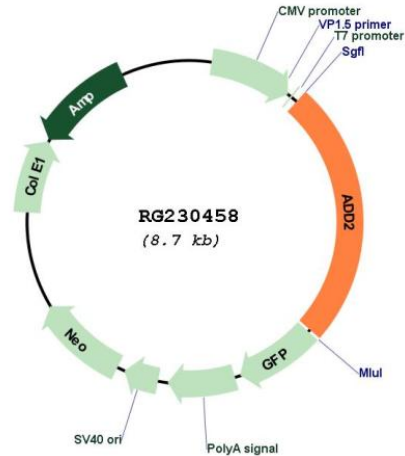
**Restriction Sites:**

SgfI-MluI

**Cloning Scheme:**

Cloning sites used for ORF Shutting:



**Plasmid Map:**


**ACCN:** NM\_001185054

**ORF Size:** 2178 bp

**OTI Disclaimer:** The molecular sequence of this clone aligns with the gene accession number as a point of reference only. However, individual transcript sequences of the same gene can differ through naturally occurring variations (e.g. polymorphisms), each with its own valid existence. This clone is substantially in agreement with the reference, but a complete review of all prevailing variants is recommended prior to use. [More info](#)

**OTI Annotation:** This clone was engineered to express the complete ORF with an expression tag. Expression varies depending on the nature of the gene.

**Components:** The ORF clone is ion-exchange column purified and shipped in a 2D barcoded Matrix tube containing 10ug of transfection-ready, dried plasmid DNA (reconstitute with 100 ul of water).

**Reconstitution Method:**

1. Centrifuge at 5,000xg for 5min.
2. Carefully open the tube and add 100ul of sterile water to dissolve the DNA.
3. Close the tube and incubate for 10 minutes at room temperature.
4. Briefly vortex the tube and then do a quick spin (less than 5000xg) to concentrate the liquid at the bottom.
5. Store the suspended plasmid at -20°C. The DNA is stable for at least one year from date of shipping when stored at -20°C.

**RefSeq:** [NM\\_001185054.1](#), [NP\\_001171983.1](#)

**RefSeq Size:** 3787 bp

**RefSeq ORF:** 2181 bp

**Locus ID:** 119

UniProt ID: [P35612](#)

Cytogenetics: 2p13.3

**Gene Summary:** Adducins are heteromeric proteins composed of different subunits referred to as adducin alpha, beta and gamma. The three subunits are encoded by distinct genes and belong to a family of membrane skeletal proteins involved in the assembly of spectrin-actin network in erythrocytes and at sites of cell-cell contact in epithelial tissues. While adducins alpha and gamma are ubiquitously expressed, the expression of adducin beta is restricted to brain and hematopoietic tissues. Adducin, originally purified from human erythrocytes, was found to be a heterodimer of adducins alpha and beta. Polymorphisms resulting in amino acid substitutions in these two subunits have been associated with the regulation of blood pressure in an animal model of hypertension. Heterodimers consisting of alpha and gamma subunits have also been described. Structurally, each subunit is comprised of two distinct domains. The amino-terminal region is protease resistant and globular in shape, while the carboxy-terminal region is protease sensitive. The latter contains multiple phosphorylation sites for protein kinase C, the binding site for calmodulin, and is required for association with spectrin and actin. Alternatively spliced transcript variants have been described. [provided by RefSeq, Jun 2010]