

## Product datasheet for **RG230437**

### **DREF (ZBED1) (NM\_001171135) Human Tagged ORF Clone**

#### **Product data:**

Product Type:	Expression Plasmids
Product Name:	DREF (ZBED1) (NM_001171135) Human Tagged ORF Clone
Tag:	TurboGFP
Symbol:	ZBED1
Synonyms:	ALTE; DREF; hDREF; TRAMP
Mammalian Cell Selection:	Neomycin
Vector:	pCMV6-AC-GFP (PS100010)
E. coli Selection:	Ampicillin (100 ug/mL)



[View online »](#)

ORF Nucleotide  
Sequence:

>RG230437 representing NM\_001171135  
Red=Cloning site Blue=ORF Green=Tags(s)

TTTTGTAATACGACTCACTATAGGGCGGCCGGAATTCGTCGACTGGATCCGGTACCGAGGAGATCTGCC  
GCCGCGATCGCC

ATGGAGAATAAAAGCCTGGAGAGCTCCCAGACAGACCTGAAGCTGGTGGCCACCCCGCGCCAAGAGCA  
AGGTGTGGAAGTATTTTCGGCTTCGACACCAACGCCGAGGGATGCATCCTGCAGTGAAGAAAATCTACTG  
CCGCATCTGCATGGCCCAGATCGCTACTCCGAAACACCTCCAACCTGTCTACCACCTGGAGAAGAAC  
CACCCCGAGGAATTCTGCGAGTTCGTAAGAGCAACACGGAGCAGATGCGTGAAGCCTTCGCCACCGCCT  
TCTCCAAGCTGAAGCCGAGTCGTCCCAGCAGCCCGGGCAGGACGCGCTGGCCGTCAAGGCCGGCCACGG  
CTACGACAGCAAGAAGCAGCAGGAGCTGACGGCCCGCTGCTGGGCCTCATCTGCGAGGGGCTGTACCCA  
GCCTCCATCGTGGACGAGCCACCTTCAAGGTGCTGCTGAAGACGGCCGACCCCGGTATGAGTGCCCA  
GCCGAAGTACATCTCTACCAAGGCCATCCCTGAGAAGTACGGGGCGTCCGGGAGGTGATCCTGAAGGA  
GCTGGCCGAGGCCACCTGGTGTGGCATCTCCACCGACATGTGGAGGAGTGAAGAATCAGAACCAGCCCTAC  
GTACGCTGGCCGCCACTTCTGGGCCTGGGCGCCCAACTGCCTGTCCATGGGCTCCCGCTGCCTGA  
AGACCTTCGAGGTGCCGAAGAGAACACGGCGGAGACCATCACGCGAGTCTCTATGAGGTCTTCATCGA  
GTGGGGCATCAGCGCCAAGGTCTTCGGGGCCACCACCAACTATGGCAAGGACATCGTGAAGGCGTCTCC  
CTGCTGGACGTCGAGTGACATGCCCTGCCTGGGCCACACCTTCAATGCCGGCATCCAGCAGGCCTTCC  
AGCTCCGAAGCTGGGGGCGTCTGTGCGCTGCCGAAACTGGTGGAGTACTTCCAGCAGTCTGCCGT  
GGCCATGTACATGCTCTATGAGAAGCAGAAGCAGCAGAAGTGGCCACTGCATGCTGGTGAACAACCGC  
GTCTCTGGTGGGGGAGCAGCTGGCCATGCTGCAGCCCTCAAGGAGCAGCAGTTCGTCATCGCCGGGG  
TCTTGGTGGAGGACAGCAACAACCACCACCTCATGCTGGAGGCCAGCGAGTGGCCACCATCGAGGGGCT  
GGTGGAGCTCCTGCAGCCCTTCAAGCAGGTGGCCGAGATGCTGTGCGCCTCCAGGTACCCCAACATCAGC  
ATGGTGAAGCCGCTGCTGCACATGCTCCTGAACACCACGCTCAACATCAAGGAGACCGACTCCAAGGAGC  
TCAGCATGGCCAAGGAGTTCATCGCCAAGGAGCTTCCAAGACCTACCAGGAGACGCCCGAGATCGACAT  
GTTTCTCAACGTGGCCACCTTCTGGACCCCGCTACAAGAGGCTGCCCTTCTCTCCGCTTCGAGCGG  
CAGCAGGTGGAGAATCGCGTGGTGAAGAGGCCAAGGGCCTGCTGGACAAGGTCAAAGACGGCGGTACC  
GGCCGGCTGAGGACAAGATCTTCCCGGTGCCGAGGAGCCTCCCGTCAAGAAGCTCATGCGGACATCCAC  
GCCGCCGCCAGCGTCATCAACAACATGCTGGCCGAGATCTTCTGCCAGACAGGCGGCTGGAGGAC  
CAGGAAGAGTGGCATGCCAGGTGGTGGAGGAGCTGAGCAACTCAAGTCCAGAAGGTGCTTGGCCTCA  
ACGAAGACCCCTCAAGTGGTGGTCAAGCCGCTGGCCCTTCTCCCTGCTGCCAAGGTGCTGCAGAA  
GTACTGGTGGTACGGCCACGCGCTGCCCCCTGAGCGTCTTCTCGGATCCGCCGCAACGTGGTGCAGC  
GCCAAGAGGAACCGGCTGGCTCCCGCGCAGTGGACGAGCAGGTGTTTCTGTATGAGAACGCCCGGAGTG  
GGCAGAGGCGGAACCCGAGGACCAGGACGAGGGGAGTGGGGCTGGACCAGGAGCAGGTGTTCTCCTT  
GGGGATGGCGTCAGCGGCGTTCCTTTGGCATTAGGGACAGCAGCTTCTCTG

ACGCGTACGCGGCCGCTCGAG – GFP Tag – GTTTAA

Protein Sequence: >RG230437 representing NM\_001171135  
 Red=Cloning site Green=Tags(s)

MENKSLESSQTDLKLVAHPRAKSKVWKYFGFDNAEGCILQWKKIYCRICMAQIAYSNGTNSLSYHLEKN  
 HPEEFCEVKSNTQMREAFATAFSLKPESQPGQDALAVKAGHGYDSKKQQLTA AVLGLICEGLYP  
 ASIVDEPTFKVLLKTADPRYELPSRKYISTKAIPEKYGAVREVILKELAEATWCGISTDMWRSENQNRAY  
 VTLAAHFLGLGAPNCLSMGSRCLKTFEVPEENTAEITITRVLVEYFIEWGISAKVFGATTNYGKDIVKACS  
 LLDVAVHMPCLGHTFNAGIQQAFQLPKLGALLSRCRKLVEYFQSAVAMYMLYEKQKQONVAHCMLVSNR  
 VSWWGSTLAMLQRLKEQQFVIAGVLVEDSNHHLMLEASAWATIEGLVELLQPFKQVAEMLSASRYPTIS  
 MVKPLLHMLLNTLNIKETDSKELSMAKEVIAKELSKTYQETPEIDMFLNVATFLDPYKRLPFLSAFER  
 QQVENRVVEEAKGLLDKVKDGGYRPAEDKIFPVPEPPVKLMRTSTPPPASVINMLAEIFCQTGGVED  
 QEEWHAQVVEELSNFKSQKVLGLNEDPLKWWSDRLALFPLLPKVLQKYWCVTATRVAPERLFGSAANVVS  
 AKRNRLAPAHVDEQVFLYENARSGAEAPEDQDEGEWGLDQEQVFSLDGVS GGGFFGIRDS SFL

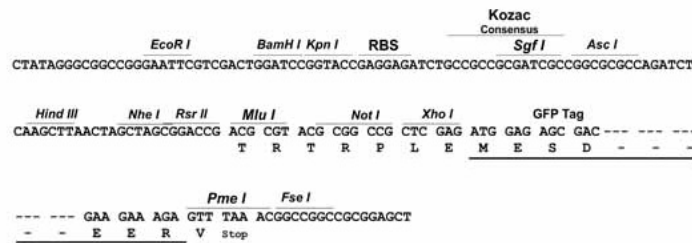
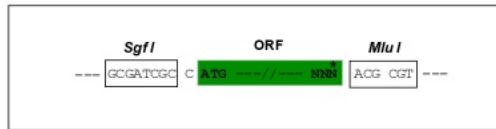
TRTRPLE - GFP Tag - V

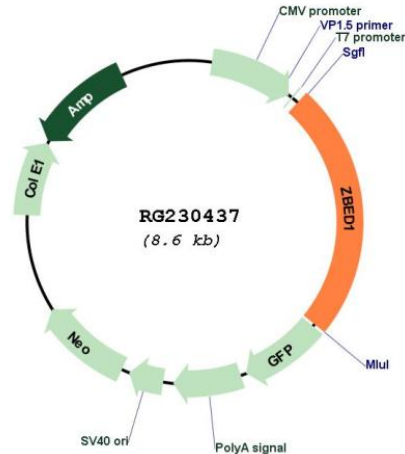
Restriction Sites:

Sgfl-Mlul

Cloning Scheme:

Cloning sites used for ORF Shuttling:



**Plasmid Map:**


**ACCN:** NM\_001171135

**ORF Size:** 2082 bp

**OTI Disclaimer:** The molecular sequence of this clone aligns with the gene accession number as a point of reference only. However, individual transcript sequences of the same gene can differ through naturally occurring variations (e.g. polymorphisms), each with its own valid existence. This clone is substantially in agreement with the reference, but a complete review of all prevailing variants is recommended prior to use. [More info](#)

**OTI Annotation:** This clone was engineered to express the complete ORF with an expression tag. Expression varies depending on the nature of the gene.

**Components:** The ORF clone is ion-exchange column purified and shipped in a 2D barcoded Matrix tube containing 10ug of transfection-ready, dried plasmid DNA (reconstitute with 100 ul of water).

**Reconstitution Method:**

1. Centrifuge at 5,000xg for 5min.
2. Carefully open the tube and add 100ul of sterile water to dissolve the DNA.
3. Close the tube and incubate for 10 minutes at room temperature.
4. Briefly vortex the tube and then do a quick spin (less than 5000xg) to concentrate the liquid at the bottom.
5. Store the suspended plasmid at -20°C. The DNA is stable for at least one year from date of shipping when stored at -20°C.

**RefSeq:** [NM\\_001171135.1](#), [NP\\_001164606.1](#)

**RefSeq Size:** 4606 bp

RefSeq ORF: 2085 bp

Locus ID: 9189

UniProt ID: [O96006](#)

Cytogenetics: X;Y

Protein Families: Druggable Genome

**Gene Summary:** This gene is located in the pseudoautosomal region 1 (PAR1) of X and Y chromosomes. It was earlier identified as a gene with similarity to Ac transposable elements, however, was found not to have transposase activity. Later studies show that this gene product is localized in the nucleus and functions as a transcription factor. It binds to DNA elements found in the promoter regions of several genes related to cell proliferation, such as histone H1, hence may have a role in regulating genes related to cell proliferation. Alternatively spliced transcript variants with different 5' untranslated region have been found for this gene. [provided by RefSeq, Jan 2010]