

Product datasheet for **RG230436**

ZNF185 (NM_001178107) Human Tagged ORF Clone

Product data:

Product Type:	Expression Plasmids
Product Name:	ZNF185 (NM_001178107) Human Tagged ORF Clone
Tag:	TurboGFP
Symbol:	ZNF185
Synonyms:	SCELL
Mammalian Cell Selection:	Neomycin
Vector:	pCMV6-AC-GFP (PS100010)
E. coli Selection:	Ampicillin (100 ug/mL)



[View online »](#)

ORF Nucleotide
Sequence:

>RG230436 representing NM_001178107
Red=Cloning site Blue=ORF Green=Tags(s)

TTTTGTAATACGACTCACTATAGGGCGGCCGGGAATTCGTCGACTGGATCCGGTACCGAGGAGATCTGCC
GCCGCGATCGCC

ATGAGTATCTCAGCTCTTGGAGGCCGACCAAAGGGAAGCCTCTGCCACCAGCGGAGGAGGAGCGCAATA
ACGTTCTCAAGCAGATGAAAGTGCGAACACGCTGAAGGGGGACAAGAGCTGGATTACCAAGCAGGATGA
ATCGGAGGGTCGCACCATAGAGCTGCCCTCAGGCCGAGTCGCGCCACATCCTTTTCATCAGCTGGGGAG
GTTCCGAAGCCTAGGCCTCCGAGCACAAGGGCTCCCACTGGCTACATCATCCGGGGAGTGTTCACCAAGC
CCATAGACAGCTTCCAGCCCCAGCAGCAGTCCCAAGGCCAACGGGACTCCAAAAGTGTGCCAG
TCTGGTGAGAACGCTAACGCTGGTCTCCCGCCCTCTCTCTGGCTACAAGATGACCACTGAGGAT
TACAAGAAGCTGGCACCCTACAATATCAGGCGCAGCTCTACATCAGGGGACACCGAGGAGGAGGAGG
AGGAGGTGGTGCATTCTCTCAGATGAACAGAAACGGAGGTGAGGCTGCAAGCGGTGTTCTGAGGAG
GACAGCTCCCGGAGCACTCTACGTCCTGTGAGCGCAAGAAGAGCACTGGTCTACCCAGGAGACA
CAGGCACCGTTTATCGCGAAGAGGGTGGAGGTGGTGAAGAGGACGGGCCCTCTGAGAAGAGCCAGGACC
CACCTGCTCTGGCAAGATCCCACTCTGGCTCAAACAGTGCAGGATGGAGGCAGGACCAAAGCGTCTCGGGC
AATTTGGATCGAGTGCCTGCCAAGTATGCCTAGCCCCGCTGGGAGCCAGGAGCTCAGGTCTTCCCAGGC
AACAAAGACAAGGAGGCCCTGCTCCAGAGAGCTCCAGAGGGACTTGGCTGGTGAAGGAGGCTTTCAGGG
CCCCAACACAGATGCTGCAAGGTCAAGTGCACAGTTGAGTGTGGCAATGTGGGATCCGGAGCCACGGG
CTCCCGCCTGAAGGCTTGGCTGCAGTAGACATCGGCTCCGAGAGAGGAAGGCTGTGTGCAGCTGCTAGC
TTTGCCTTTTCTGGAAGACCAGGATGGGCACAGTGCCTCACTCTCAGTCTGCAAGCCTAGACCAGCAG
CCATCAGCTCCAGTCCCACTTCACTCTCTGCTGTCCCTGCTGATAGGAAGAGCAACAGCAGCAGGCCCA
GGAGGATGCAAAGGCAGACCCAAAGGGGCCCTTGGCTGATTATGAGGGGAAGGATGTGGCCACCAGGGTC
GGAGAGGCTGGCAGGAGAGGCCTGGAGCTCCAAGAGGTGGCAAGGAGACCCAGCTGTACCCGCTCAGC
AACCTGCAGATCCAGCACCCAGAGCGGCAGAGCAGCCACAGCGGATCTGAGCAACTTGTGAGCAGAGA
GAGTTGTGGCAGCAGCGTGTGACTGATTTTGGGGGAAGGATGTGGCCACCAAGGTCGGAGAGGCCTGG
CAGGACAGGCCTGGAGCCCCAAGAGGTGGCAAGGAGACCCAGCTGTACCCACTCAGCAACTGCAGATC
CCAGTACCCAGAACAGCAGAACAGCCCCAGCGGATCTGAGCAATTCGTCAGACGAGAGAGCTGCACCAG
CAGGGTGAGGAGCCCTCGAGCTGCATGGTCACTGTTACTGTCACTGCCACATCTGAGCAGCCTCACATT
TATATCCAGCCCCGCAAGTGAATTGGACTCCAGCTCTACCACCAAAGGGATTCTTTCGTGAAGGAGT
ACGTGAATGCTAGTGAAGTGTCTTCTGGGAAGCCAGTATCTGCACGCTATAGCAACGTCAGCAGCATTGA
GGACTCATTCCGCATGGAGAAGAAGCCTCCATGTGGCAGCACTCCATACTCTGAGAGGACAACTGGAGGG
ATCTGTACTTACTGCAACCGTGAGATCCGAGACTGTCAAAGATTACCCTAGAACATCTTGGTATCTGCT
GCCATGAATATTGCTTTAAGTGTGGATTTGCAGTAAACCGATGGGCGATCTCCTGGATCAGATCTTCAT
TCACCGTGACACCATTCACTGTGGGAAATGCTATGAGAAGCTCTTC

ACGCGTACGCGGCCGCTCGAG - GFP Tag - GTTTAA

Protein Sequence: >RG230436 representing NM_001178107
 Red=Cloning site Green=Tags(s)

```

MSISALGGRTKGKPLPPGEEERNNVLKQMKVRTTLKGDKSWITKQDESEGRTEI LPSGRSRATSFSSAGE
VPKPRPPSTRAPTYIIRGVFTKPIDSSSQPQQQFPKANGTPKSAASLVRTANAGPPRPSSSGYKMTTED
YKKLAPYNIRRSSTSGDTEEEEEVEVPFSSDEQKRRSEAAAGVLRRTAPREHSYVLSAAKKSTGPTQET
QAPFIAKRVEVVEEDGPSEKSDPPALARSTPGSNSADGGRTKASRAIWIECLPSMPSPAGSQELRSSPG
NKDKEAPCSRELQRDLAGEEAFRAPNTDAARSSAQLSDGNVSGSATGSRPEGLAAVDIGSERGRLCAAAS
FASFLEDDQGHANSQSCKPRPAAISSATSVS AVPADRKSNSTAAQEDAKADPKGALADYEGKDVATRV
GEAWQERPGAPRGGQGDPAVPAQPADPSTPERQSSPSGSEQLVRRESCGSSVL TDFEGKDVATKVGAW
QDRPGAPRGGQGDPAVPTQQPADPSTPEQQNSPSGSEQFVRRESCTSRVRSPPSCMVTVTVTATSEPHI
YIPAPASELSSSTTKGILFVKEYVNAVSEVSSGKPV SARYSNVSSI EDSFAMEKKPPCGSTPY SERTTGG
ICTYCNREIRDCKITLEHLGICHEYCFKCGICSKPMGDLLDQIF IHRDTIHCGKCYEKL F
  
```

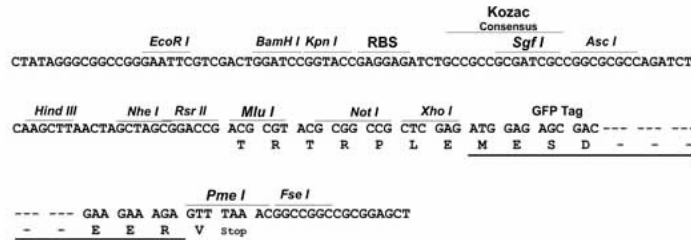
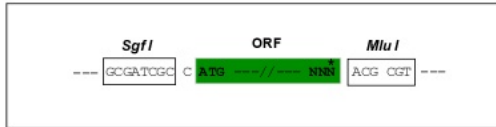
TRTRPLE - GFP Tag - V

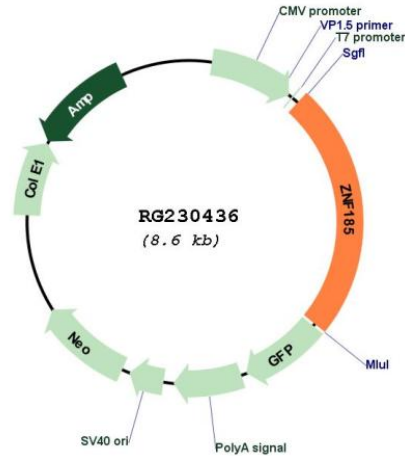
Restriction Sites:

Sgfl-MluI

Cloning Scheme:

Cloning sites used for ORF Shuttling:



Plasmid Map:


ACCN: NM_001178107

ORF Size: 2076 bp

OTI Disclaimer: The molecular sequence of this clone aligns with the gene accession number as a point of reference only. However, individual transcript sequences of the same gene can differ through naturally occurring variations (e.g. polymorphisms), each with its own valid existence. This clone is substantially in agreement with the reference, but a complete review of all prevailing variants is recommended prior to use. [More info](#)

OTI Annotation: This clone was engineered to express the complete ORF with an expression tag. Expression varies depending on the nature of the gene.

Components: The ORF clone is ion-exchange column purified and shipped in a 2D barcoded Matrix tube containing 10ug of transfection-ready, dried plasmid DNA (reconstitute with 100 ul of water).

Reconstitution Method:

1. Centrifuge at 5,000xg for 5min.
2. Carefully open the tube and add 100ul of sterile water to dissolve the DNA.
3. Close the tube and incubate for 10 minutes at room temperature.
4. Briefly vortex the tube and then do a quick spin (less than 5000xg) to concentrate the liquid at the bottom.
5. Store the suspended plasmid at -20°C. The DNA is stable for at least one year from date of shipping when stored at -20°C.

RefSeq: [NM_001178107.1](#), [NP_001171578.1](#)

RefSeq Size: 4353 bp

RefSeq ORF: 2079 bp

Locus ID: 7739

UniProt ID: [O15231](#)

Cytogenetics: Xq28

Gene Summary: Zinc-finger proteins bind nucleic acids and play important roles in various cellular functions, including cell proliferation, differentiation, and apoptosis. This gene encodes a LIM-domain zinc finger protein. The LIM domain is composed of two contiguous zinc finger domains, separated by a two-amino acid residue hydrophobic linker. The LIM domain mediates protein:protein interactions. Multiple alternatively spliced transcript variants encoding different isoforms have been identified.[provided by RefSeq, May 2010]