

Product datasheet for **RG230433**

HDX (NM_001177479) Human Tagged ORF Clone

Product data:

Product Type:	Expression Plasmids
Product Name:	HDX (NM_001177479) Human Tagged ORF Clone
Tag:	TurboGFP
Symbol:	HDX
Synonyms:	CXorf43; D030011N01Rik
Mammalian Cell Selection:	Neomycin
Vector:	pCMV6-AC-GFP (PS100010)
E. coli Selection:	Ampicillin (100 ug/mL)



[View online »](#)

ORF Nucleotide
Sequence:

>RG230433 representing NM_001177479
Red=Cloning site Blue=ORF Green=Tags(s)

TTTTGTAATACGACTCACTATAGGGCGGCCGGAATTCGTCGACTGGATCCGGTACCGAGGAGATCTGCC
GCC**CGCATCGCC**

ATGAATCTACGTTCTGTATTTACTGTAGAACAAACAAAGGATTTTACAGCGTTATTATGAAAATGGAATGA
CAAATCAAAGTAAAAATTGCTTTTACGCTCATATTACAGTGTGCACAGGAGACTAAGCTGGACTTCAGTGT
AGTCAGGACGTGGGTTGGCAATAAGAGAAGAAAGATGAGTAGTAAGAACTCTGAATCTGGAACAGCAACA
ACAGGAACCTCTTTGTCAGCTCCAGACATCACAGTCAGAAATGTGGTTAATATTGCTCGACCCTCAAGCC
AGCAGTCTTCTGGACATCTGCCAATAATGATGTCATTGTAAGTGGTATATACAGTCCAGCCAGTTCATC
AAGTAGGCAAGGAACAAACAAACATACAGACACACAAATTACAGAAGCACATAAAATCCCTATTCAGAAA
ACAGCCACTAAAAATGATACTGAGTTTCAGTTACACATTCCTGTCCAAAGACAAGTAGCACACTGTAAAA
ATGCTTCCCTACTCCTAGGTGAAAAACAATTATTTGTCAAGACAGACAAGTGTCTAAATGCTGGAAA
CTCAGTATTCAATCACGCAAAGAAAAACTATGGAACTCTTCAGTACAAGCTTCTGAAATGACAGTACCT
CAAAAGCCTTCTGTGTGCCACCGACCTTGTAAAAATTGAACAGTTGGGATTCAAAGGTATATAAGCCTG
AACACACAGGCCAGCATTACATAAATTATGTGGGCAAAAAGCCAACCTATTAGAGACCCCTTACTGTAGAAC
ACAAAACCTGGAAATCCGTGAAGTGTTTTCATTGGCAGTTAGCGATTACCCCCAGAGAATTCTGGGAGGA
AATGCCCCACAGAAGCCTAGCTCAGCAGAAGGAAATGTTTGTCCATTGCAATGGAGACTGGAGATGCTG
AGGATGAATATGCCAGAGAGGAAGAGCTGGCATCGATGAGAGCACAGATACCAAGCTATTCGAGATTTTA
TGAAAGTGGCAGTTCCCTTCGAGCTGAGAACAAAGTACAACCTTGCCCGGACCAGGAAGAAATATGCCA
AATTCACAAATGGTGAATATTAGAGATATGTCAGACAATGTACTGTATCAAAACAGAAACTACCATTTGA
CACCACGGACCTCATTACATACAGCATCTAGTACAATGTACAGTAATACCAATCCATTACGGAGTAATTT
TTCTCCTCATTTTGCATCATCAAACCAATTGAGATTATCACAAAACCAAAAACAATTACCAGATTTACGGA
AACCTTACTGTGCCTTGATTACAGGGTGTCTAGAAAAAGAGCACTACAGGACCGCACTCAGTTCAGTG
ACCGAGACTTAGCCACCCTTAAGAAGTATTGGGACAATGGCATGACCAGCCTGGGCTCTGTTTGTAGAGA
GAAAATTGAAGCTGTGGCAACTGAATTAATGTTGACTGTGAAATAGTTCGGACTTGATTGGGAATCGA
AGAAGGAAATATCGTTAATGGGGATTGAAGTTCACCTCCAAGAGGAGGCCCTGCTGATTTCTCTGAGC
AGCCTGAGTCTGGTTCTTTATCTGCACTCACACCAGGAGAGGAAGCTGGGCTGAAGTAGGAGAGGATAA
TGACAGAAATGATGAAGTATCCATCTGTTGTCTGAAGGAAGCTCTCAAGAAGAGCCCAATGAAGTTGTT
CCGAATGATGCAAGGGCTCATAAGGAAGAGGACCACCATGCAGTAACCACAGATAATGTGAAAATAGAAA
TTATTGATGATGAAGAAAGTACATGATAAGTAATTCTGAAGTAGAACAAGTAAACTCTTTCTTGATTA
TAAGAATGAAGAAGTCAAATTCATTGAAAATGAGCTCGAGATTCAAAAGCAAAAATACTTTAAACTTCAG
ACTTTTGTAGAACTTGATATTAGCAATGAAAGCTGATGATAAGGAACAACAGCAGGCACTGCTGTGAG
ATTTACCTCCTGAATTAGAGGAAATGGATTTCAATCATGCCTCACTGGAGCCTGATGATACCTCATTGAG
TGATCTTCTTTGTCAGAGAAAAATGTCTCAGAAAAGTTTG

ACGCGTACGCGGCCGCTCGAG - GFP Tag - GTTTAA

Protein Sequence: >RG230433 representing NM_001177479
 Red=Cloning site Green=Tags(s)

MNLRVFTVEQQRILQRYYENGMTNQSKNCFQLILQCAQETKLD FSVVRTWVGNKRRKMSSKNSESGTAT
 TGTSL SAPDITVRNVVNIARPSSQSSWTSANNDVIVTGIYSPASSSSRQGTNKHDTDTQITEAHKIPIQK
 TATKNDTEFQLHIPVQRQVAHCKNASLLLGEKTIILSRQTSVLNAGNSVFNHAKKNYGNSSVQASEMTPV
 QKPSVCHRPCKIEPVGIQRSYKPEHTGPALHNL CGQKPTIRDPYCRTQNLEIREVFLAVSDYPQRILGG
 NAPQKPSSAEGNCLSIAMETGDAEYAREEELASMRAQIPYSYRFYESGSSLRAENQSTTLPGPGRNMP
 NSQMVNIIRDMSDNVLYQNRNYHLTPRTSLHTASSTMYSNTNPLRSNFSPHFASSNQLRLSQNQNNYQISG
 NLTVPWITGCSRKRALQDRTQFSDRDLATLKKYWDNGMTSLG SVCREKIEAVATELNVDCEIVRTWIGNR
 RRKYRLMGIEVPPPRGGPADFSEQPESGLSALTPGEEAGPEVGEDNDRNDEVSICLSEGSSQEEPNEVV
 PNDARAHKEEDHHA VTTDNVKIEIIDDEESDMISNSEVEQVNSFLDYKNEEVKFIENELEIQKQYFKLQ
 TFVRSILAMKADDKEQQQALLSDLPPELEEMDFNHASLEPDDTSF SVSSLSEKNVSESL

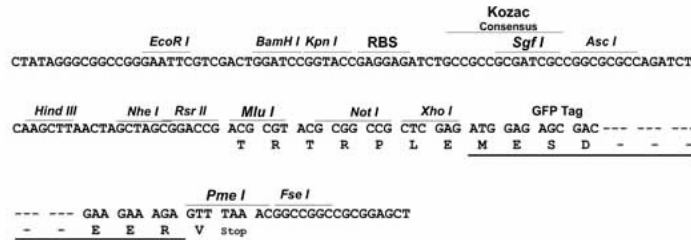
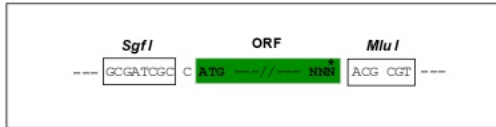
TRTRPLE - GFP Tag - V

Restriction Sites:

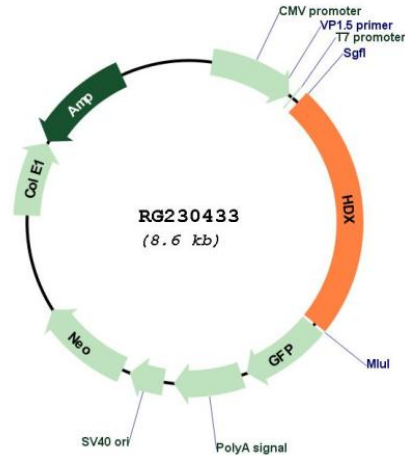
Sgfl-Mlul

Cloning Scheme:

Cloning sites used for ORF Shuttling:



Plasmid Map:



ACCN: NM_001177479

ORF Size: 2070 bp

OTI Disclaimer: The molecular sequence of this clone aligns with the gene accession number as a point of reference only. However, individual transcript sequences of the same gene can differ through naturally occurring variations (e.g. polymorphisms), each with its own valid existence. This clone is substantially in agreement with the reference, but a complete review of all prevailing variants is recommended prior to use. [More info](#)

OTI Annotation: This clone was engineered to express the complete ORF with an expression tag. Expression varies depending on the nature of the gene.

Components: The ORF clone is ion-exchange column purified and shipped in a 2D barcoded Matrix tube containing 10ug of transfection-ready, dried plasmid DNA (reconstitute with 100 ul of water).

Reconstitution Method:

1. Centrifuge at 5,000xg for 5min.
2. Carefully open the tube and add 100ul of sterile water to dissolve the DNA.
3. Close the tube and incubate for 10 minutes at room temperature.
4. Briefly vortex the tube and then do a quick spin (less than 5000xg) to concentrate the liquid at the bottom.
5. Store the suspended plasmid at -20°C. The DNA is stable for at least one year from date of shipping when stored at -20°C.

RefSeq: [NM_001177479.2](#)

RefSeq Size: 6335 bp

RefSeq ORF: 2073 bp
Locus ID: 139324
UniProt ID: [Q7Z353](#)
Cytogenetics: Xq21.1
Protein Families: Transcription Factors