

Product datasheet for **RG230431**

SLC34A2 (NM_001177999) Human Tagged ORF Clone

Product data:

Product Type:	Expression Plasmids
Product Name:	SLC34A2 (NM_001177999) Human Tagged ORF Clone
Tag:	TurboGFP
Symbol:	SLC34A2
Synonyms:	NAPI-3B; NAPI-IIb; NPTIIb; PULAM
Mammalian Cell Selection:	Neomycin
Vector:	pCMV6-AC-GFP (PS100010)
E. coli Selection:	Ampicillin (100 ug/mL)



[View online »](#)

ORF Nucleotide
Sequence:

>RG230431 representing NM_001177999
Red=Cloning site Blue=ORF Green=Tags(s)

TTTTGTAATACGACTCACTATAGGGCGGCCGGGAATTCGTCGACTGGATCCGGTACCGAGGAGATCTGCC
GCCGCGATCGCC

ATGGCTCCCTGGCTGAATTGGGAGATGCCAGCCCAACCCCGATAAGTACCTCGAAGGGGCCGAGGTC
AGCAGCCCACTGCCCTGATAAAAGCAAAGAGACCAACAAAAATAACACTGAGGCACCTGTAACCAAGAT
TGAACCTCTGCCGTCTACTCCACGGCTACACTGATAGATGAGCCCACTGAGGTGGATGACCCCTGGAAC
CTACCCACTCTTCAGGACTCGGGGATCAAGTGGTCAGAGAGAGACACCAAGGGAAGATTCTCTGTTTCT
TCCAAGGGATTGGGAGATTGATTTTACTTCTCGGATTTCTACTTTTTTCGTGTGCTCCCTGGATATTCT
TAGTAGCGCTTCCAGCTGGTTGGAGGAAAAATGGCAGGACAGTTCTTCAGCAACAGCTCTATTATGTCC
AACCTTTGTTGGGGCTGGTGATCGGGGTGCTGGTGACCGTCTTGGTGCAGAGCTCCAGCACCTCAACGT
CCATCGTTGTGAGCATGGTGTCTTTCATTGCTCACTGTTTCGGGCTGCCATCCCATTATCATGGGGC
CAACATTGGAACGTCAATCACCAACACTATTGTTGCGCTCATGCAGGTGGGAGATCGGAGTGAGTTCAGA
AGAGCTTTTGCAGGAGCCACTGTCCATGACTTCTCAACTGGCTGTCCGTGTTGGTGTCTTGGCCGTGG
AGGTGGCCACCCATTACCTCGAGATCATAACCCAGCTTATAGTGGAGAGCTTCCACTTCAAGAATGGAGA
AGATGCCCCAGATCTTCTGAAAGTCATCACTAAGCCCTTCACAAAGCTCATTGTCCAGCTGGATAAAAA
GTTATCAGCCAAATTGCAATGAACGATGAAAAAGCGAAAAACAAGAGTCTTGTCAAGATTTGGTGCAAAA
CTTTTACCAACAAGACCCAGATTAACGTCACCTGTTCCCTCGACTGCTAACTGCACCTCCCCTTCCCTCTG
TTGGACGGATGGCATCCAAAACCTGGACCATGAAGAATGTGACCTACAAGGAGAACATCGCCAAATGCCAG
CATATCTTTGTGAATTTCCACCTCCCGGATCTTGTGTGGGCACCATCTGTCTATACTCTCCCTGCTGG
TCCTCTGTGGTTGCCTGATCATGATTGTCAAGATCCTGGGCTCTGTGCTCAAGGGGCAGTCCGCACTGT
CATCAAGAAGACCATCAACACTGATTTCCCTTTCCCTTTGCATGGTTGACTGGCTACCTGGCCATCCTC
GTCGGGGCAGGCATGACCTTCATCGTACAGAGCAGCTCTGTGTTACGTCGGCCTTGACCCCTGATTG
GAATCGGCGTGATAACCATTTGAGAGGGCTTATCCACTCACGCTGGGCTCCAACATCGGCACCACCACCAC
CGCCATCCTGGCCGCTTAGCCAGCCCTGGCAATGCATTGAGGAGTTCACTCCAGATCGCCCTGTGCCAC
TTTTTCTTCAACATCTCCGGCATCTTGTGTGGTACCCGATCCCCTTCACTCGCTGCCATCCGCATGG
CCAAGGGGCTGGCAACATCTCTGCAAGTATCGCTGGTTCGCCGCTTCTACCTGATCATCTTCTTCTT
CCTGATCCGCTGACGGTGTGGCCTCTCGCTGGCCGGCTGGCGGTGCTGGTTGGTGTGGGGTCCC
GTCGTCTTTCATCATCTCTGGTACTGTGCTCCGACTCCTGCAGTCTCGCTGCCACGCGTCTGCGCA
AGAAACTCCAGAAGTGGAACTTCTGCCGCTGTGGATGCGCTCGTGAAGCCCTGGGATGCGCTCGTCTC
CAAGTTACCCGGCTGCTTCCAGATGCGCTGCTGTGCTGCTGCCGCTGTGCTGCCGCGGTGCTGCTTG
CTGTGTGGCTGCCCAAGTGTGCGCTGCAGCAAGTGTGCGAGGACTTGGAGGAGGCGCAGGAGGGGC
AGGATGTCCCTGTCAAGGCTCCTGAGACCTTTGATAACATAACCATAGCAGAGAGGCTCAGGGTGAGGT
CCCTGCCTCGGACTCAAAGACCGAATGCACGGCCTTG

AGCGGACCGACGCGTACGCGGCCGCTCGAG - GFP Tag - GTTTAA

Protein Sequence: >RG230431 representing NM_001177999
 Red=Cloning site Green=Tags(s)

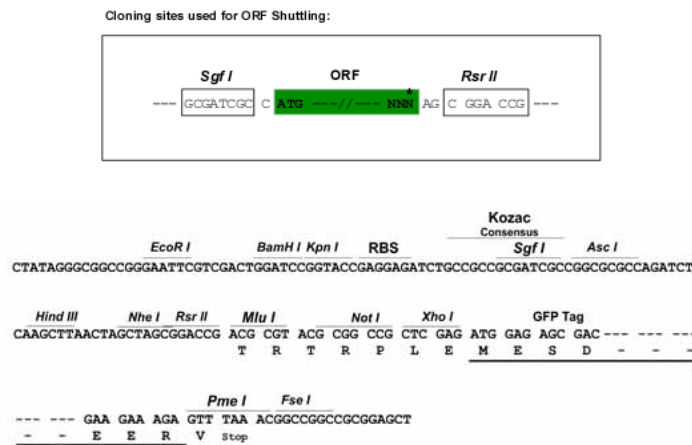
MAPWPELGDAQPNPKYLEGAAGQQPTAPDKSKETNKNNTEAPVTKIELLPSYSTATLIDEPTEVDDPWNLPTLQDSGIKWSERDTKKGILCFFQIGRILLGFLYFFVCSLDILSSAFQLVGGKMQGQFFSNSSIMSNPLLGLVIGLVTVLVQSSSTSTIVSMVSSSLLTVRAAPIIIMGANIGTSITNTIVALMQVDRSEFRRAFAGATVHDFFNWLSVLVLLPVEVATHYLEIITQLIVESFHFKNGEDAPDLLKVIITKPFKLIQQLDKKVISQIAMNDEKAKNLSLVKIWCKTFTNKQINVTVPSTANCTSPSLCWTGDIQNWTKMNVYKENIAKQCHIFVNFHLPDLAVGTILLILSLLVLCGLIMIVKILGSLVKGQVATVIKKTINTDFPFPAWLTGYLAIVGAGMTFIVQSSSVFTSALTPLIGIVITIERAYPLTLGNSIGTTTTAILAALASPGNALRSSLQIALCHFFFNISGILLWYPIPFTRLPIRMAKGLGNISAKYRWFVAVFYLIIFFFLIPLTVFGLSLAGWRVLVGVGVPVVFIIILVLCRLQLSRCPRVLPKQLQWNFLPLWMRSLKPWDVAVSKFTGCFQMRCRCCCRVCCRACCLCGCPKCCRCCKCEDLEEAQEQDVPVKAPETFDNITISREAQGEVPASDSKTECTAL

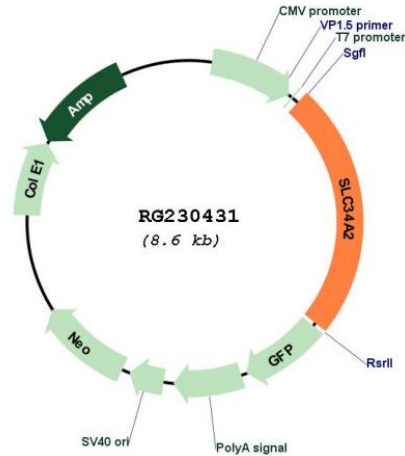
SGPTRRRLE - GFP Tag - V

Restriction Sites:

Sgfl-RsrII

Cloning Scheme:



Plasmid Map:


ACCN: NM_001177999

ORF Size: 2067 bp

OTI Disclaimer: The molecular sequence of this clone aligns with the gene accession number as a point of reference only. However, individual transcript sequences of the same gene can differ through naturally occurring variations (e.g. polymorphisms), each with its own valid existence. This clone is substantially in agreement with the reference, but a complete review of all prevailing variants is recommended prior to use. [More info](#)

OTI Annotation: This clone was engineered to express the complete ORF with an expression tag. Expression varies depending on the nature of the gene.

Components: The ORF clone is ion-exchange column purified and shipped in a 2D barcoded Matrix tube containing 10ug of transfection-ready, dried plasmid DNA (reconstitute with 100 ul of water).

Reconstitution Method:

1. Centrifuge at 5,000xg for 5min.
2. Carefully open the tube and add 100ul of sterile water to dissolve the DNA.
3. Close the tube and incubate for 10 minutes at room temperature.
4. Briefly vortex the tube and then do a quick spin (less than 5000xg) to concentrate the liquid at the bottom.
5. Store the suspended plasmid at -20°C. The DNA is stable for at least one year from date of shipping when stored at -20°C.

RefSeq: [NM_001177999.1](#), [NP_001171470.1](#)

RefSeq Size: 4187 bp

RefSeq ORF:	2070 bp
Locus ID:	10568
UniProt ID:	<u>O95436</u>
Cytogenetics:	4p15.2
Protein Families:	Transmembrane
Gene Summary:	<p>The protein encoded by this gene is a pH-sensitive sodium-dependent phosphate transporter. Phosphate uptake is increased at lower pH. Defects in this gene are a cause of pulmonary alveolar microlithiasis. Three transcript variants encoding two different isoforms have been found for this gene. [provided by RefSeq, May 2010]</p>