

Product datasheet for **RG230430**

SLC34A2 (NM_001177998) Human Tagged ORF Clone

Product data:

Product Type:	Expression Plasmids
Product Name:	SLC34A2 (NM_001177998) Human Tagged ORF Clone
Tag:	TurboGFP
Symbol:	SLC34A2
Synonyms:	NAPI-3B; NAPI-IIb; NPTIIb; PULAM
Mammalian Cell Selection:	Neomycin
Vector:	pCMV6-AC-GFP (PS100010)
E. coli Selection:	Ampicillin (100 ug/mL)



[View online »](#)

**ORF Nucleotide
Sequence:**

>RG230430 representing NM_001177998
 Red=Cloning site Blue=ORF Green=Tags(s)

TTTTGTAATACGACTCACTATAGGGCGGCCGGAATTCGTCGACTGGATCCGGTACCGAGGAGATCTGCC
 GCC**GCGATCGCC**

ATGGCTCCCTGGCTGAATTGGGAGATGCCAGCCCAACCCCGATAAGTACCTCGAAGGGGCCGAGGTC
 AGCAGCCCACTGCCCTGATAAAAGCAAAGAGACCAACAAAAATAACACTGAGGCACCTGTAACCAAGAT
 TGAACCTCTGCCGTCTACTCCACGGCTACACTGATAGATGAGCCCACTGAGGTGGATGACCCCTGGAAC
 CTACCCACTCTTCAGGACTCGGGGATCAAGTGGTCAGAGAGAGACACCAAGGGAAGATTCTCTGTTTCT
 TCCAAGGGATTGGGAGATTGATTTTACTTCTCGGATTTCTACTTTTTTCGTGTGCTCCCTGGATATTCT
 TAGTAGCGCTTCCAGCTGGTTGGAGGAAAAATGGCAGGACAGTCTTCAGCAACAGCTCTATTATGTCC
 AACCTTTGTTGGGGCTGGTGATCGGGGTGCTGGTGACCGTCTTGGTGCAGAGCTCCAGCACCTCAACGT
 CCATCGTTGTGAGCATGGTGTCTTTCATTGCTCACTGTTCCGGCTGCCATCCCATTATCATGGGGC
 CAACATTGGAACGTCAATCACCAACACTATTGTTGCGCTCATGCAGGTGGGAGATCGGAGTGAGTTCAGA
 AGAGCTTTTGCAGGAGCCACTGTCCATGACTTCTCAACTGGCTGTCCGTGTTGGTGTCTTGGCCGTGG
 AGGTGGCCACCCATTACCTCGAGATCATAACCCAGCTTATAGTGGAGAGCTTCCACTTCAAGAATGGAGA
 AGATGCCCCAGATCTTCTGAAAGTCATCACTAAGCCCTTCAAAAAGCTCATTGTCCAGCTGGATAAAAA
 GTTATCAGCCAAATTGCAATGAACGATGAAAAAGCGAAAAACAAGAGTCTTGTCAAGATTTGGTGCAAAA
 CTTTTACCAACAAGACCCAGATTAACGTCACCTGTTCCCTCGACTGCTAACTGCACCTCCCCTTCCCTCTG
 TTGGACGGATGGCATCCAAAACCTGGACCATGAAGAATGTGACCTACAAGGAGAACATCGCCAAATGCCAG
 CATATCTTTGTGAATTTCCACCTCCCGGATCTTGTGTGGGCACCATCTGTCTATACTCTCCCTGCTGG
 TCCTCTGTGGTTGCCTGATCATGATTGTCAAGATCCTGGGCTCTGTGCTCAAGGGGCAGTCCCCACTGT
 CATCAAGAAGACCATCAACACTGATTTCCCTTTCCCTTTGCATGGTTGACTGGCTACCTGGCCATCCTC
 GTCGGGGCAGGCATGACCTTCATCGTACAGAGCAGCTCTGTGTTACGTCGGCCTTGACCCCTGATTG
 GAATCGGCGTGATAACCATTTGAGAGGGCTTATCCACTCACGCTGGGCTCCAACATCGGCACCACCACCAC
 CGCCATCCTGGCCGCTTAGCCAGCCCTGGCAATGCATTGAGGAGTTCACCTCCAGATCGCCCTGTGCCAC
 TTTTTCTCAACATCTCCGGCATCTTGTGTGGTACCCGATCCCCTTCACTCGCTGCCATCCGCATGG
 CCAAGGGGCTGGCAACATCTCTGCAAGTATCGCTGGTTCGCCGCTTCTACCTGATCATCTTCTTCTT
 CCTGATCCGCTGACGGTGTGGCCTCTCGCTGGCCGGCTGGCGGTGCTGGTTGGTGTGGGGTCCC
 GTCGTCTTCATCATCATCTGGTACTGTGCTCCGACTCCTGCAGTCTCGCTGCCACGCGTCTGCCGA
 AGAAACTCCAGAAGTGGAACTTCTGCCGCTGTGGATGCGCTCGTGAAGCCCTGGGATGCGCTCGTCTC
 CAAGTTACCCGGCTGCTTCCAGATGCGCTGCTGTGCTGCTGCCGCTGTGCTGCCGCGGTGCTGCTTG
 CTGTGTGGCTGCCCAAGTGTGCGCTGCAGCAAGTGTGCGAGGACTTGGAGGAGCGCAGGAGGGGC
 AGGATGTCCCTGTCAAGGCTCCTGAGACCTTTGATAACATAACCATTAGCAGAGAGGCTCAGGGTGAGGT
 CCCTGCCTCGGACTCAAAGACCGAATGCACGGCCTTG

AG**CGGACCG**ACGCGTACGCGGCCGCTCGAG – GFP Tag – GTTTAA

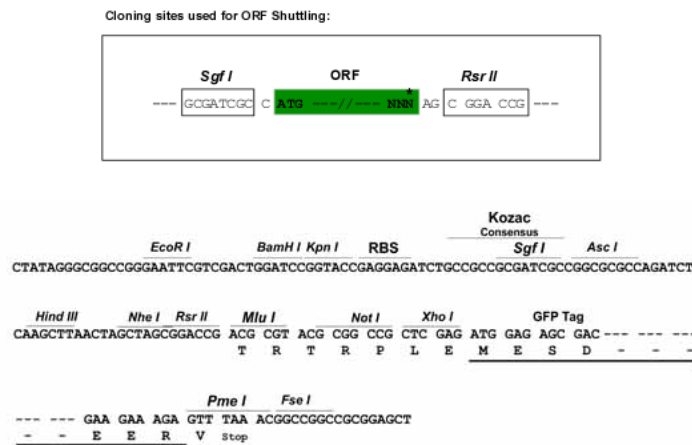
Protein Sequence: >RG230430 representing NM_001177998
 Red=Cloning site Green=Tags(s)

MAPWPELGDAQPNPKYLEGAAGQQPTAPDKSKETNKNNTEAPVTKIELLPSYSTATLIDEPTEVDDPWNLPTLQDSGIKWSERDTKGGKILCFFQIGRILLGFLYFFVCSLDILSSAFQLVGGKMQGQFFSNSSIMS
 NPLLGLVIGLVTVLVQSSSTSTIVSMVSSSLLTVRAAPIIIMGANIGTSITNTIVALMQVDRSEFR
 RAFAGATVHDFFNWLSVLVLLPVEVATHYLEIITQLIVESFHFKNGEDAPDLLKVIITKPFKLIVQLDKK
 VISQIAMNDEKAKNLSLVKIWCKTFTNKQINVTVPSTANCTSPSLCWTGDIQNWTKMNVYKENIAKCQ
 HIFVNFHLPDLAVGTILLILSLLVLCGLIMIVKILGSLVKGQVATVIKKTINTDFPPFAWLTGYLAAIL
 VGAGMTFIVQSSSVFTSALPLIGIVITIERAYPLTLGNSIGTTTTAILAALASPGNALRSSLQIALCH
 FFFNISGILLWYPIPFTRLPIRMAKGLGNISAKYRWFVAVFYLIIFFFLIPLTVFGLSLAGWRVLVGVGP
 VVFIIILVLCRLQLSRCPVLPKQLQWNFLPLWMRSLKPWDVAVSKFTGCFQMRCRCCCRVCCRACCL
 LCGCPKCCRCSCCEDLEEAQEQDVPVKAPETFDNITISREAQGEVPASDSKTECTAL

SGPTRRRLE - GFP Tag - V

Restriction Sites: SgfI-RsrII

Cloning Scheme:

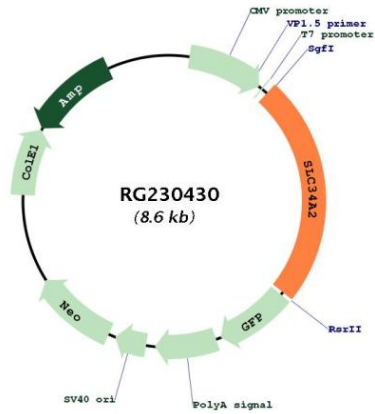


ACCN: NM_001177998

ORF Size: 2067 bp

OTI Disclaimer:	<p>Due to the inherent nature of this plasmid, standard methods to replicate additional amounts of DNA in E. coli are highly likely to result in mutations and/or rearrangements. Therefore, OriGene does not guarantee the capability to replicate this plasmid DNA. Additional amounts of DNA can be purchased from OriGene with batch-specific, full-sequence verification at a reduced cost. Please contact our customer care team at custsupport@origene.com or by calling 301.340.3188 option 3 for pricing and delivery.</p> <p>The molecular sequence of this clone aligns with the gene accession number as a point of reference only. However, individual transcript sequences of the same gene can differ through naturally occurring variations (e.g. polymorphisms), each with its own valid existence. This clone is substantially in agreement with the reference, but a complete review of all prevailing variants is recommended prior to use. More info</p>
OTI Annotation:	<p>This clone was engineered to express the complete ORF with an expression tag. Expression varies depending on the nature of the gene.</p>
Components:	<p>The ORF clone is ion-exchange column purified and shipped in a 2D barcoded Matrix tube containing 10ug of transfection-ready, dried plasmid DNA (reconstitute with 100 ul of water).</p>
Reconstitution Method:	<ol style="list-style-type: none">1. Centrifuge at 5,000xg for 5min.2. Carefully open the tube and add 100ul of sterile water to dissolve the DNA.3. Close the tube and incubate for 10 minutes at room temperature.4. Briefly vortex the tube and then do a quick spin (less than 5000xg) to concentrate the liquid at the bottom.5. Store the suspended plasmid at -20°C. The DNA is stable for at least one year from date of shipping when stored at -20°C.
RefSeq:	<p>NM_001177998.1, NP_001171469.1</p>
RefSeq Size:	<p>4164 bp</p>
RefSeq ORF:	<p>2070 bp</p>
Locus ID:	<p>10568</p>
UniProt ID:	<p>O95436</p>
Cytogenetics:	<p>4p15.2</p>
Protein Families:	<p>Transmembrane</p>
Gene Summary:	<p>The protein encoded by this gene is a pH-sensitive sodium-dependent phosphate transporter. Phosphate uptake is increased at lower pH. Defects in this gene are a cause of pulmonary alveolar microlithiasis. Three transcript variants encoding two different isoforms have been found for this gene. [provided by RefSeq, May 2010]</p>

Product images:



Circular map for RG230430