

Product datasheet for **RG230428**

EPB41L5 (NM_001184937) Human Tagged ORF Clone

Product data:

Product Type:	Expression Plasmids
Product Name:	EPB41L5 (NM_001184937) Human Tagged ORF Clone
Tag:	TurboGFP
Symbol:	EPB41L5
Synonyms:	BE37; LULU; LULU1; YMO1; YRT
Mammalian Cell Selection:	Neomycin
Vector:	pCMV6-AC-GFP (PS100010)
E. coli Selection:	Ampicillin (100 ug/mL)



[View online »](#)

ORF Nucleotide
Sequence:

>RG230428 representing NM_001184937
Red=Cloning site Blue=ORF Green=Tags(s)

TTTTGTAATACGACTCACTATAGGGCGGCCGGAATTCGTCGACTGGATCCGGTACCGAGGAGATCTGCC
GCCGCGATCGCC

ATGCTGAGTTTCTCCGTAGAACACTAGGGCGTCGGTCTATGCGTAAACATGCAGAGAAGGAACGACTCC
GAGAAGCACAACGCGCCGCACACATATTCCTGCAGCTGGAGATTCTAAGTCCATCATCACGTGTCGGGT
GTCCTTCTGGATGTTACTGATGTTAGTGTGGACTTGCCAAAAAAGCCAAAGGACAAGAGTTGTTTGT
CAGATTATGTACCACCTGGACCTGATTGAAAGCGACTATTTTGGTCTGAGATTTATGGATTACGACAAG
TAGCACATTGGTTGGATGGTACAAAAGCATCAAAAAGCAAGTAAAAATTGGTTCACCCTATTGTCTGCA
TCTTCGAGTTAAGTTTTATTCTCAGAACCAAATAACCTTCGTGAGGAGCTAACCCGGTATTTATTTGTT
CTTCAGTAAAACAAGATATTCTCAGTGGAAAATTAGACTGTCCCTTTGATACAGCAGTGAATGGCAG
CTTATAATCTGCAAGCTGAACCTGGTACTATGATCTTGCTGAGCATAGTCTGAACTTGCTCAGAGTT
CAGATTCGTGCCTATTCAGACTGAAGAGATGGAAGTGGCTATTTTGGAGAAATGGAAGGAATACAGAGGT
CAAACACCAGCACAGGCTGAAACCAATTATCTGAATAAAGCCAAATGGCTAGAAATGTATGGGGTTGATA
TGCATGTGGTCAAGGCTAGAGATGGGAATGACTATAGTTGGGACTAACCCAACAGGAGTCCCTGTTTT
TGAAGGAGATACCAAAATGGCTATTTTTTTGGCCGAAGATAACCAGATTGGATTTTAAAGAAGATAAA
TTAACCTTGGTGGTGTAGAAGATGATGATCAGGGCAAAGAACAGGAACATACATTTGTCTTTAGACTGG
ATCATCCAAAAGCATGCAAACTTTATGAAAATGTGCTGTGGAGCATCATGCTTTCTCCGCCTTCGAGG
CCCCGTCCAAAAGAGTTCTCATCGATCAGGATTTATTCGACTAGGATCACGATTTAGATATAGTGGGAAA
ACAGAGTATCAGACCACAAAACCAATAAAGCAAGAAGATCAACATCCTTTGAAAGAAGGCCAGCAAAC
GATATTTAGACGAACCTACAAATGAAAGCATGTGCTACAAAACCTGAAGAAGTGTGTTTACAATAA
TGTTTCGACCCAAAGTAATGGCTCCCAACAGGCTTGGGGGATGAGATCTGCTCTGCCTGTGAGTCCCTCC
ATTTCTCTGCTCCTGTGCCAGTGGAGATAGAGAATCTTCCACAGAGTCCCTGGAACAGACCAGCATGACA
GGAAATGCATTCTCTGAATATTGATTTGCTGAATAGCCAGACTTATTGGAAGCAACGATTGGTGTGATGT
AATTGGGGCATCTGACACTATGGAACATCCCAAGCACTGAATGACGTTAATGTAGCCACCAGGCTTCCG
GGATTAGGGGAACCTGAAGTTGAATATGAGACATTAAGACACCTCAGAGAAGCTCAAACAGCTTGAGA
TGGAGAACAGTCCCTTGTGCTCCCTCGATCCAACATCGATGTTAACATAAACAGCCAGGAGGAAGTGGT
GAAGTTGACTGAGAAATGCCTTAATAATGTCATTGAGAGCCAGGATTGAATGTCATGAGAGTTCCTCCT
GACTTCAAGAGTAACATTTTGAAGGCTCAAGTAGAAGCAGTGCATAAGGTTACAAAAGAAGATAGCTTAT
TAAGTCATAAAAAATGCCAATGTTTCAGGATGCTGCCACAAACAGTCTGTGTTAAATGAGAATAATGTGCC
CCTCCCAAGAGTCTCTTGAGACTCTGATGCTTATCACACCTGCCGACAGTGGTTCTGTCTAAAGGAA
GCTACAGATGAATTGGATGCCTTGTCTGATCTCTAACTGAGAATCTAATTGATCACACAGTTGCACCTC
AGGTGCTTCCACATCCATGATCACACCCCGTGGATTGTTCCGCTCTGGTCCCATTTTGGCAGAAGAAG
CTGCTCTGAAGCAGAAGTGTACTGACCAC

ACGCGTACGCGGCCGCTCGAG – GFP Tag – GTTTAA

Protein Sequence: >RG230428 representing NM_001184937
 Red=Cloning site Green=Tags(s)

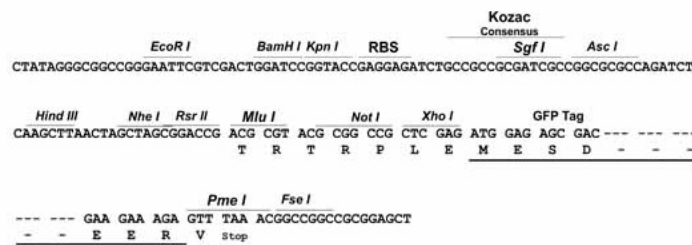
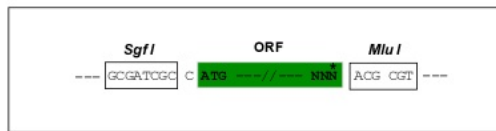
MLSFFRRTLGRSSMRKHAEKERLREAQRAATHIPAAGDSKSIITCRVSLLDGTDVSVLPPKAKGQELFD
 QIMYHLDLIESDYFGLRFMDSAQVAHWLDGTSIKKQVKIGSPYCLHLRVKFSSEPNLREELTRYLFV
 LQLKQDILSGKLDPCPFDTAVQLAAYNLQAEAGDYDLAEHSPELVSEFRFVPIQTEEMELAI FEKWKEYRG
 QTPAQAE TNYLNKAKWLEMYGVD MHVVKARDGNDYSLGLTPTGVLVFEGDTKIGLFFWPKITRLDFKKNK
 LTLVVVEDDDQGKEQEHTFVFRLDHPKACKHLWKCAVEHHAFFRLRGPVQKSSHRSGFIRLGSFRFYSKG
 TEYQTTKTNKARRSTSFERRPSKRYSRRTLQMKACATKPEELSVHNNVSTQSNQSQA WGMRSALPVSPS
 ISSAPVPEIENLPQSPGTDQHDKRCIPLNIDLLNSPDLEATIGDVI GASDTMETSQALNDVNVATRLP
 GLGEPEVEYETLKDTSEKLKQLEMENSPLLSPRSNIDVNINSQEEVVKL TEKLN NVIESPGLNVMRVPP
 DFKSNILKAQVEAVHKVTKEDSLLSHKNANVQDAATNSAVLNENNVP LPKESLETMLLITPADSGSVLKE
 ATDEL DALLASL TENLIDHTVAPQVSSTSMITPRWIVPLWSHFGRRSCEAEVFTDH

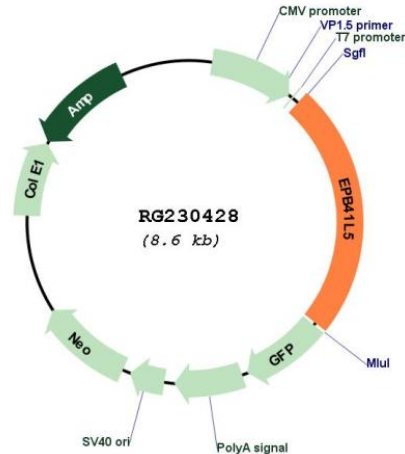
TRTRPLE - GFP Tag - V

Restriction Sites: SgfI-MluI

Cloning Scheme:

Cloning sites used for ORF Shuttling:



Plasmid Map:


ACCN: NM_001184937

ORF Size: 2061 bp

OTI Disclaimer: The molecular sequence of this clone aligns with the gene accession number as a point of reference only. However, individual transcript sequences of the same gene can differ through naturally occurring variations (e.g. polymorphisms), each with its own valid existence. This clone is substantially in agreement with the reference, but a complete review of all prevailing variants is recommended prior to use. [More info](#)

OTI Annotation: This clone was engineered to express the complete ORF with an expression tag. Expression varies depending on the nature of the gene.

Components: The ORF clone is ion-exchange column purified and shipped in a 2D barcoded Matrix tube containing 10ug of transfection-ready, dried plasmid DNA (reconstitute with 100 ul of water).

Reconstitution Method:

1. Centrifuge at 5,000xg for 5min.
2. Carefully open the tube and add 100ul of sterile water to dissolve the DNA.
3. Close the tube and incubate for 10 minutes at room temperature.
4. Briefly vortex the tube and then do a quick spin (less than 5000xg) to concentrate the liquid at the bottom.
5. Store the suspended plasmid at -20°C. The DNA is stable for at least one year from date of shipping when stored at -20°C.

RefSeq: [NM_001184937.2](#)

RefSeq Size: 6490 bp

RefSeq ORF: 2064 bp

Locus ID: 57669

UniProt ID: [Q9HCM4](#)

Cytogenetics: 2q14.2

Gene Summary: May contribute to the correct positioning of tight junctions during the establishment of polarity in epithelial cells.[UniProtKB/Swiss-Prot Function]