

Product datasheet for **RG230421**

TTC39B (NM_001168339) Human Tagged ORF Clone

Product data:

Product Type:	Expression Plasmids
Product Name:	TTC39B (NM_001168339) Human Tagged ORF Clone
Tag:	TurboGFP
Symbol:	TTC39B
Synonyms:	C9orf52
Mammalian Cell Selection:	Neomycin
Vector:	pCMV6-AC-GFP (PS100010)
E. coli Selection:	Ampicillin (100 ug/mL)



[View online »](#)

ORF Nucleotide
Sequence:

>RG230421 representing NM_001168339
Red=Cloning site Blue=ORF Green=Tags(s)

TTTTGTAATACGACTCACTATAGGGCGGCCGGGAATTCGTCGACTGGATCCGGTACCGAGGAGATCTGCC
GCC**CGCATCGCC**

ATGGATGTCTGTGCTGGCCTGCCGCTCCGGGGCGGGGAAATCGAGTAGCTGCACTCAGGCCCGCCCGA
GACCCGGAGGGAGCGCCGGGCCCTCCCCTTTTGCCTCCTTTGCCTGGGCTGAGCCAGAGCCGAGAGC
AGGAGTCGGCTCTGAGTTCCTGCTTGGTTTTGGGTGGCAGCAGCCAGAGGAGGAATATGGCGCTCTTA
GGCAGCCGAGCGGAGCTGGAAGCGGACGAGGACGTTTTCGAAGATGCCTTGAAACCATCTCAATATCTT
CTCACTCAGATATGGCAACAAGCAGCCTTCACTTTGCATCATGTGATACACAACAGGCGCCAGACAGCG
CGGAGCGTCTACTGTCAGCAGTTCATCATCAACCAAGGTGGATCTCAAGAGTGGCCTCGAAGAATGTGCT
GTGGCATTGAACTATTTCTAAGCAACAAATTTACAGACGCCTTAGAATTGCTTCGCCCTGGGCTAAGG
AGAGTATGTACCATGCCTGGGCTACAGTACCATTGTGGTGTGCAGGCTGTCTGACCTTCGAGCAACA
GGACATCCAGAACGGCATTCTGCCATGAAGGACGCTTTACAAACCTGCCAAAAGAAAAATACACAGTT
GTAGAATCTTTCTCAAGTCTTTCTAGAGGATCCCTGGAGCAACTGAGTGAAGAGGAAATGCATGCTG
AAATCTGTTATGCCGAGTGTCTCTACAGAAAGCTGCACTCACGTTTGTGCAAGGATGAAAATATGATCAA
CTTCATCAAAGGTGGACTCAAAATAGAACAAAGTTACCAAATATATAAAGAAATGTCTTTCTATCCTGCAT
GAAATTCAGAAGAACAACTTCAGCAGGAATCTTCTATGAGTTTGAAGGGGTGTCAAGCTTGGCAGTG
GGGCTTTAATTTGATGCTGTCCCTTTACCAGCAAGGATTATCAGACTACTAGAATTTATTGGATTTTC
TGGGAATAGGGAGTTGGGCTCCTGCAGTACGTGAAGGTGCTTCAGGAAGGAGCATGAGGTCTGCAGTG
TGCTGCTTAACCATCTTAGCTTTTACACTTACATCTCCCTAATACTTGGTACAGGAGAAGTGAATGTTG
CGAAGCAGAGCGTCTCCTGGCACCCCTCCTCCAGCAGTTTCAAATGGCTCACTCGTGTGTTTTATCA
TGCCCGAATAGAGTTGCTGAAAGGGAATCTTGAAGAGGCACAAGAAGATTTCAAAAATGCATTTAGTT
CAAGAAGAATGGAACAGTTTACCATCTCTGCTACTGGGAGCTAATGTGGATTAATGTTTTCAACAAA
ACTGGATGCAGGCATATTACTATTCAGATCTGCTTTGCAAAGAGAGTAAATGGTCCAAGGCAACTTATGT
GTTCTTGAAGCAGCAATTTTGGATGCTTCCAGAGGAGGATGTAGTAGCAACGAATGAGAATGTGGTA
ACTTTATTCAGACAGGTGGACAGCTTGAAGCAGAGAATTGCCGGGAAATCTATCCCTACTGAGAAGTTG
CTGTGAGGAAGGCTCGGCGTTACTCCGCTCCTTACCTGCACCTGTGAAGCTCATCTTACCTGCCCTGGA
AATGATGTATGTCTGGAATGGTTTTTCAATAGTGAGCAAAAAGAAAAGACCTTTCTGAAAATCTGTTAGTA
ACTGTTGAAAAGCTGAGGCAGCTTTACAAAGTCAAAATTTAACAGCTTCTCTGTGGATGATGAGTGCT
TAGTGAAGTACTTAAAGGATGTTGCCTCAAGAACTTACAGCGGCCCTTGAAGCTGAACTATGTTACAA
TCATGTTGTGAAAAGTAAAAGCTACTGAAGTATGACCACTACCTAGTCCGCTTCACTCTATTTGAATTG
GCATCTTTGTATAAAAAGCCAGGGGAAATTGACAAGGCCATAAAGTTCTAGAACTGCAAGGAACAACT
ACAAAGATTACTCCCTGGAGTCCAGACTACACTTCAGAATTCAGGCAGCTTTCACCTCTGGAGAAAACC
TTCCTCAGAT

ACGCGTACGCGGCCGCTCGAG – GFP Tag – GTTTAA

Protein Sequence: >RG230421 representing NM_001168339
 Red=Cloning site Green=Tags(s)

MDAVLACRLRGRGNRVAALRPRPRPGGSAGPSPFALLCAGLSPEPRAGVGSEFPWFLLGGSSQRRNMALL
 GSRAELEADEDVFEDALETISISSHSDMATSSSLHFASCDTQQAPRQRGASTVSSSSSTKVDLKSGLEECA
 VALNLFSLSNKFTDALELLRPWAKESMYHALGYSTIVVLQAVLTFEQDIONGISAMKDALQTCQKKKYTV
 VESFSSLLSRGSLEQLSEEMHAEICYAECLLQKAALTFVQDENMINFIKGGKIRTSYQIYKECLSILH
 EIQKNLQEQEFFYEFEGVKLGSGAFNMLSLLPARIIRLLEFIFGSGNRELGLLQLREGASGRSMRSAL
 CCLTILAFHTYISLILGTGEVNVAEAERLLAPFLQQFPNGSLVLFYHARIELLKGNLEEAQEVFQKCISV
 QEEWKQFHHLCYWELMWINVQQNMWQAYYSDLLCKESKWSKATYVFLKAAILSMLPEEDVVATNENVV
 TLFQVDSLKQRIAGKSIPTEKFAVRKARRYSASLPAPVKLILPALEMMYVWNGFSIVSKRKDLSENLLV
 TVEKAEAAALQSQNFNSFVDDDECLVKLLKGCLKNLQRPLQAELCYNHVVESEKLLKYDHYLVPFTLFEL
 ASLYKSQGEIDKAIKFLETARNNYKDYSLESRLHFRIQAALHLWRKPSSD

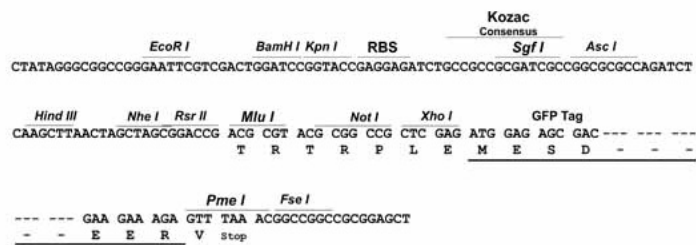
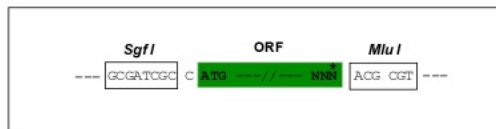
TRTRPLE - GFP Tag - V

Restriction Sites:

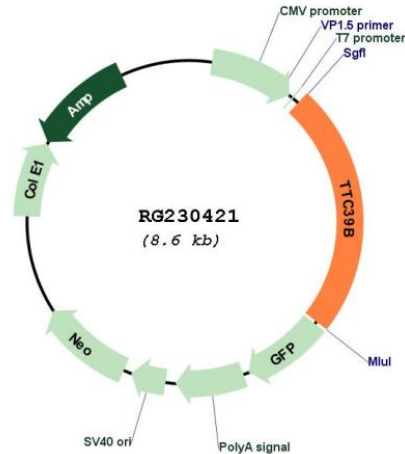
SgfI-MluI

Cloning Scheme:

Cloning sites used for ORF Shuttling:



Plasmid Map:



ACCN: NM_001168339

ORF Size: 2040 bp

OTI Disclaimer: The molecular sequence of this clone aligns with the gene accession number as a point of reference only. However, individual transcript sequences of the same gene can differ through naturally occurring variations (e.g. polymorphisms), each with its own valid existence. This clone is substantially in agreement with the reference, but a complete review of all prevailing variants is recommended prior to use. [More info](#)

OTI Annotation: This clone was engineered to express the complete ORF with an expression tag. Expression varies depending on the nature of the gene.

Components: The ORF clone is ion-exchange column purified and shipped in a 2D barcoded Matrix tube containing 10ug of transfection-ready, dried plasmid DNA (reconstitute with 100 ul of water).

Reconstitution Method:

1. Centrifuge at 5,000xg for 5min.
2. Carefully open the tube and add 100ul of sterile water to dissolve the DNA.
3. Close the tube and incubate for 10 minutes at room temperature.
4. Briefly vortex the tube and then do a quick spin (less than 5000xg) to concentrate the liquid at the bottom.
5. Store the suspended plasmid at -20°C. The DNA is stable for at least one year from date of shipping when stored at -20°C.

RefSeq: [NM_001168339.1](#), [NP_001161811.1](#)

RefSeq Size: 3270 bp

RefSeq ORF: 2043 bp
Locus ID: 158219
UniProt ID: Q5VTQ0
Cytogenetics: 9p22.3
Gene Summary: Regulates high density lipoprotein (HDL) cholesterol metabolism by promoting the ubiquitination and degradation of the oxysterols receptors LXR (NR1H2 and NR1H3).
[UniProtKB/Swiss-Prot Function]