

## Product datasheet for **RG230408**

### **MX1 (NM\_001178046) Human Tagged ORF Clone**

#### **Product data:**

Product Type:	Expression Plasmids
Product Name:	MX1 (NM_001178046) Human Tagged ORF Clone
Tag:	TurboGFP
Symbol:	MX1
Synonyms:	IFI-78K; IFI78; IncMX1-215; MX; MxA
Mammalian Cell Selection:	Neomycin
Vector:	pCMV6-AC-GFP (PS100010)
E. coli Selection:	Ampicillin (100 ug/mL)



[View online »](#)

ORF Nucleotide  
Sequence:

>RG230408 representing NM\_001178046  
Red=Cloning site Blue=ORF Green=Tags(s)

TTTTGTAATACGACTCACTATAGGGCGGCCGGGAATTCGTCGACTGGATCCGGTACCGAGGAGATCTGCC  
GCCGCGATCGCC

ATGTTTGTTCGGAAGTGGACATCGAAAAGCTGATCCAGCTGCTGCATCCACCCTCTATTACTGAATG  
GAGATGCTACTGTGGCCAGAAAAATCCAGGCTCGGTGGCTGAGAACAACCTGTGCAGCCAGTATGAGGA  
GAAGGTGCGCCCTGCATCGACCTCATTGACTCCCTGCGGGCTCTAGGTGTGGAGCAGGACTGGCCCTG  
CCAGCCATCGCCGTCATCGGGGACCAGAGCTCGGGCAAGAGCTCCGTGTTGGAGGCACTGTCAGGAGTTG  
CCCTTCCAGAGGCAGCGGGATCGTGACCAGATGCCCGCTGGTGTGAACTGAAGAAAATTGTGAACGA  
AGATAAGTGGAGAGGCAAGGTCAAGTACCAGGACTACGAGATTGAGATTCGGATGCTTCAGAGGTAGAA  
AAGGAAATTAATAAGGCCAGAATGCCATCGCCGGGAAGGAATGGGAATCAGTCATGAGCTAATCACCC  
TGGAGATCAGCTCCGAGATGTCCGGATCTGACTCTAATAGACCTTCTGGCATAACCAGAGTGGCTGT  
GGCAATCAGCTGCTGACATTGGGTATAAGATCAAGACTCATCAAGAAGTACATCCAGAGGCAGGAG  
ACAATCAGCCTGGTGGTGGTCCCAAGTAATGTGGACATCGCCACCACAGAGGCTCTCAGCATGGCCAGG  
AGGTGGACCCCGAGGGAGACAGGACCATCGAATCTTGACGAAGCCTGATCTGGTGGACAAGGAACTGA  
AGACAAGTGTGGACGTGGTGCAGAACCTCGTGTCCACCTGAAGAAGGTTACATGATTGTCAAGTGC  
CGGGGCCAGCAGGAGATCCAGGACCAGCTGAGCCTGTCCGAAGCCCTGCAGAGAGAGAAGATCTTCTTTG  
AGAACCACCCATATTTAGGGATCTGCTGGAGGAAGGAAAGGCCACGGTTCCTGCCTGGCAGAAAAACT  
TACCAGCGAGCTCATCACATATCTGTAATCTCTGCCCTGTTAGAAAATCAAATCAAGGAGACTCAC  
CAGAGAATAACAGAGGAGCTACAAAAGTATGGTGTGACATACCGGAAGACGAAAATGAAAAATGTTCT  
TCCTGATAGATAAAGTTAATGCCTTTAATCAGGACATCACTGCTCTCATGCAAGGAGAGGAAACTGTAGG  
GGAGGAAGACATTCGGCTGTTTACCAGACTCCGACACGAGTTCACAAAATGGAGTACAATAATTGAAAAC  
AATTTTCAAGAAGGCCATAAAATTTTGAGTAGAAAAATCCAGAAAATTTGAAAATCAGTATCGTGGTAGAG  
AGCTGCCAGGCTTTGTGAATTACAGGACATTTGAGACAATCGTGAACAGCAAATCAAGGCACTGGAAGA  
GCCGGCTGTGGATATGCTACACACCGTGACGGATATGGTCCGGCTTGCTTTCACAGATGTTTCGATAAAA  
AATTTTGAAGAGTTTTTTAACCTCCACAGAACCAGCAAGTCCAAAATGAAGACATTAGAGCAGAACAAG  
AGAGAGAAGGTGAGAAGCTGATCCGCCTCCACTCCAGATGGAACAGATTGTCTACTGCCAGGACCAGGT  
ATACAGGGGTGCATTGCAGAAGGTGAGAGAGAAGGAGCTGGAAGAAGAAAAGAAGAAGAAATCCTGGGAT  
TTTGGGGCTTTCCAGTCCAGCTCGCAACAGACTTTCCATGGAGGAGATCTTTCAGCACCTGATGGCCT  
ATCACCAGGAGGCCAGCAAGCGCATCTCCAGCCACATCCCTTTGATCATCCAGTTCTTCATGCTCCAGAC  
GTACGGCCAGCAGCTTCAGAAGGCCATGCTGCAGCTCCTGCAGGACAAGGACACCTACAGCTGGCTCCTG  
AAGGAGCGGAGCGACACCAGCGACAAGCGGAAGTTCCTGAAGGAGCGGCTTGACGGCTGACGCAGGCTC  
GGCGCCGGCTTGCCCAAGTTCCTCCGGT

ACGCGTACGCGGCCGCTCGAG - GFP Tag - GTTTAA

Protein Sequence: >RG230408 representing NM\_001178046  
 Red=Cloning site Green=Tags(s)

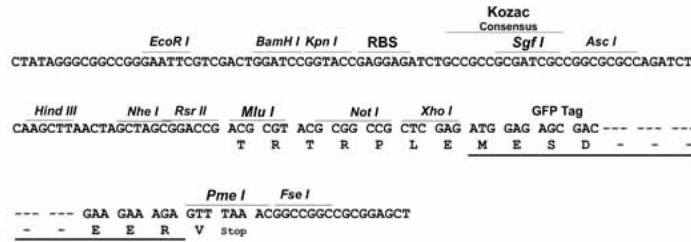
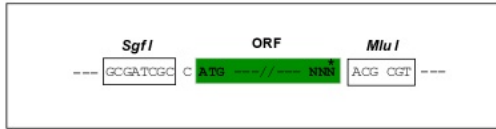
MVSEVDIAKADPAAASHPLLLNGDATVAQKNPGSVAENNLCSQYEEKVRPCIDLIDSLRALGVEQDLAL  
 PAIAVIGDQSSGKSSVLEALSGVALPRGSGIVTRCPLVLKLLKLVNEDKWRGKVSQDYIEISDASEVE  
 KEINKAQNAIAGEGMGISHELITLIEISSRDVPLTLIDLPGITRVAVGNQPADIGYKIKTLIKKYIQRQE  
 TISLVVVPNSVDIATTEAL SMAQEVDPEGDRITIGILT KPDLDVKGTEDKVVVDVVRNLVFHLKKGYMIVKC  
 RGQQEIQDQLSLSEALQREKIFFENHPYFRDLL EEGKATVPCLAEKLTSELITHICKSLPLENQIKETH  
 QRITEELQKYGV DIPEDENEKMFFLIDKVNAFNQDITALMQGEETVGEEDIRLFTRLRHEFHKWTIIEN  
 NFQEGHKILSRKIQKFENQYRGRELPGFVNYRTFETIVKQKIKALEEPAVDMLHTVDTMVRLAFTDVSIK  
 NFEFFFNLRHTAKSKIEDIRAEQEREKEKLRHLHFQMEQIVYCCDQVYRGALQKVREKELEEEKKKSWD  
 FGAFQSSSATDSSMEEIFQHLMAYHQEASKRISSHIPLIIQFFMLQTYGQQQLQKAMLQLLDKDTYSWLL  
 KERSDTSKRRKFLKERLARLTQARRRLAQFPG

TRTRPLE - GFP Tag - V

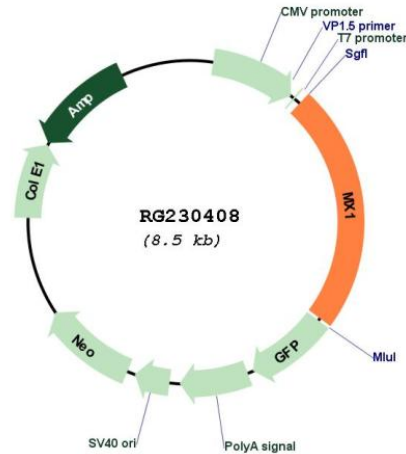
Restriction Sites: SgfI-MluI

Cloning Scheme:

Cloning sites used for ORF Shuttling:



## Plasmid Map:



ACCN: NM\_001178046

ORF Size: 1986 bp

**OTI Disclaimer:** The molecular sequence of this clone aligns with the gene accession number as a point of reference only. However, individual transcript sequences of the same gene can differ through naturally occurring variations (e.g. polymorphisms), each with its own valid existence. This clone is substantially in agreement with the reference, but a complete review of all prevailing variants is recommended prior to use. [More info](#)

**OTI Annotation:** This clone was engineered to express the complete ORF with an expression tag. Expression varies depending on the nature of the gene.

**Components:** The ORF clone is ion-exchange column purified and shipped in a 2D barcoded Matrix tube containing 10ug of transfection-ready, dried plasmid DNA (reconstitute with 100 ul of water).

**Reconstitution Method:**

1. Centrifuge at 5,000xg for 5min.
2. Carefully open the tube and add 100ul of sterile water to dissolve the DNA.
3. Close the tube and incubate for 10 minutes at room temperature.
4. Briefly vortex the tube and then do a quick spin (less than 5000xg) to concentrate the liquid at the bottom.
5. Store the suspended plasmid at -20°C. The DNA is stable for at least one year from date of shipping when stored at -20°C.

RefSeq: [NM\\_001178046.2](#)

RefSeq Size: 2683 bp

RefSeq ORF: 1989 bp

Locus ID: 4599

UniProt ID: [P20591](#)

Cytogenetics: 21q22.3

Protein Families: Druggable Genome

**Gene Summary:** This gene encodes a guanosine triphosphate (GTP)-metabolizing protein that participates in the cellular antiviral response. The encoded protein is induced by type I and type II interferons and antagonizes the replication process of several different RNA and DNA viruses. There is a related gene located adjacent to this gene on chromosome 21, and there are multiple pseudogenes located in a cluster on chromosome 4. Alternative splicing results in multiple transcript variants. [provided by RefSeq, Sep 2013]