

## Product datasheet for **RG230407**

### ZNF185 (NM\_001178109) Human Tagged ORF Clone

#### Product data:

Product Type:	Expression Plasmids
Product Name:	ZNF185 (NM_001178109) Human Tagged ORF Clone
Tag:	TurboGFP
Symbol:	ZNF185
Synonyms:	SCELL
Mammalian Cell Selection:	Neomycin
Vector:	pCMV6-AC-GFP (PS100010)
E. coli Selection:	Ampicillin (100 ug/mL)



[View online »](#)

ORF Nucleotide  
Sequence:

>RG230407 representing NM\_001178109  
Red=Cloning site Blue=ORF Green=Tags(s)

TTTTGTAATACGACTCACTATAGGGCGGCCGGGAATTCGTCGACTGGATCCGGTACCGAGGAGATCTGCC  
GCCGCGATCGCC

ATGAGTATCTCAGCTCTTGGAGGCCGACCAAAGGGAAGCCTCTGCCACCAGCGAGGAGGAGCGCAATA  
ACGTTCTCAAGCAGATGAAAGTGCGAACACGCTGAAGGGGGACAAGAGCTGGATTACCAAGCAGGATGA  
ATCGGAGGGTCGCACCATAGAGCTGCCCTCAGGCCGAGTCGCGCCACATCCTTTTCATCAGCTGGGGAG  
GTTCCGAAGCCTAGGCCTCCGAGACAAGGGCTCCCACTGGCTACATCATCCGGGGAGTGTTCACCAAGC  
CCATAGACAGCTTCCAGCCCCAGCAGCAGTCCCCAAGGCCAACGGGACTCCAAAAGTGCTGCCAG  
TCTGGTGAGAACGCTAACGCTGGTCTCCCGCCCTCTCTCTGGCTACAAGATGACCACTGAGGAT  
TACAAGAAGCTGGCACCTACAATATCAGGCGCAGCTCTACATCAGGGGACACCGAGGAGGAGGAGG  
AGGAGGTGGTGCCATTCTCTCAGATGAACAGAAACGGAGGTGAGGCTGCAAGCGGTGTTCTGAGGAG  
GACAGCTCCCGGGAGCACTCTACGCTCTGTGAGCGCAAGAAGAGCACTGGTCTACCCAGGAGACA  
CAGGCACCGTTTATCGCGAAGAGGGTGGAGGTGGTGAAGAGGACGGGCCCTCTGAGAAGAGCCAGGACC  
CACCTGCTCTGGCAAGATCCACTCTGGCTCAAACAGTGCAGGATGGAGGCAGGACCAAAGCGTCTCGGGC  
AATTTGGATCGAGTGCTGCCAAGTATGCCTAGCCCCGCTGGGAGCCAGGAGCTCAGGTCTTCCCAGGC  
AACAAAGACAAGGAGGCCCTGCTCCAGAGAGCTCCAGAGGGACTTGGCTGGTGAAGGAGGCTTTCAGGG  
CCCCAACACAGATGCTGCAAGGTCAAGTGCACAGTTGAGTGTGGCAATGTGGGATCCGGAGCCACGGG  
CTCCCGCCTGAAGGCTTGGCTGCAGTAGACATCGGCTCCGAGAGAGGAAGCTCCAGTCCACTTCAGTC  
TCTGCTGTCCCTGCTGATAGGAAGAGCAACAGCACAGCAGCCAGGAGGATGCAAAGGCAGACCCAAAGG  
GGCCTTGGCTGATTATGAGGGGAAGGATGTGGCCACCAGGGTCGGAGAGGCCTGGCAGGAGGCCTGG  
AGTCCAAGAGGTGGCCAAGGAGACCCAGCTGTACCCGCTCAGCAACCTGCAGATCCCAGCACCCAGAG  
CGGCAGAGCAGCCCCAGCGGATCTGAGCAACTTGTGAGACGAGAGAGTTGTGGCAGCAGCGTGTGACTG  
ATTTTGAGGGGAAGGATGTGGCCACCAAGGTCGGAGAGGCCTGGCAGGACAGGCCTGGAGCCCCAAGAGG  
TGGCCAAGGAGACCCAGCTGTACCCACTCAGCAACCTGCAGATCCAGTACCCAGAACAGCAGAACAGC  
CCCAGCGGATCTGAGCAATTCGTCAGACGAGAGAGCTGCACCAGCAGGGTGAAGGCCCCCTGAGCTGCA  
TGGTCACTGTTACTGTCCTGCACTGACATCTGAGCAGCCTCACATTTATATCCAGCCCCGCAAGTGAATT  
GGACTCCAGCTCTACCACCAAGGGATTCTTTCGTGAAGGAGTACGTGAATGCTAGTGAAGTGTCTTCT  
GGGAAGCCAGTATCTGCACGCTATAGCAACGTCAGCAGCATTGAGGACTCATTGCCATGGAGAAGAAGC  
CTCCATGTGGCAGCACTCCATACTCTGAGAGGACAACCTGGAGGGATCTGTACTTACTGCAACCGTGAGAT  
CCGAGACTGTCCAAAGATTACCTAGAACATCTTGGTATCTGCTGCCATGAATATTGCTTTAAGTGTGGG  
ATTTGAGTAAACCGATGGGCGATCTCCTGGATCAGATCTTCAATCACCGTGACACCATTCACTGTGGGA  
AATGCTATGAGAAGCTCTTC

ACGCGTACGCGGCCGCTCGAG - GFP Tag - GTTTAA

**Protein Sequence:** >RG230407 representing NM\_001178109  
 Red=Cloning site Green=Tags(s)

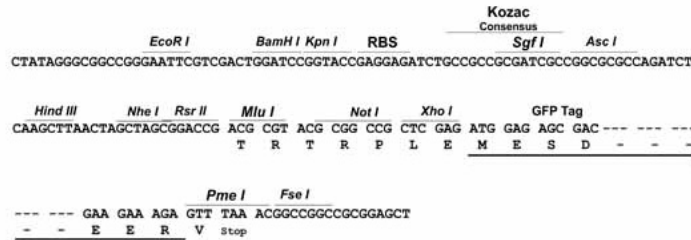
MSISALGGRTKGKPLPPGEEERNNVLKQMKVRTTLKGDKSWITKQDESEGRTEI LPSGRSRATSFSSAGE  
 VPKPRPPSTRAPTGYIIRGVFTKPIDSSSQPQQQFPKANGTPKSAASLVRTANAGPPRPSSSGYKMTTED  
 YKKLAPYNI RRSSTSGDTEEEEEEEVVPFSSDEQKRRSEAA SGVLRRTAPREHSYVLSA AKKSTGPTQET  
 QAPFIAKRVEVVEEDGPSEKSDPPALARSTPGSNSADGGRTKASRAIWIECLPSPMPSPAGSQELRSSPG  
 NKDKEAPCSRELQRDLAGEEAFRAPNTDAARSSAQLSDGNVSGS GATGSRPEGLAAVDIGSERGSSSATS  
 SAVPADRKSNSTAAQEDAKADPKGALADYEGKDVATR VGEAWQERP GAPRGGQGDPAVPAQQPADPSTPE  
 RQSSPSGSEQLVRRESCGSSVLDFEGKDVATKVGEAWQDRPGAPRGGQGDPAVPTQQPADPSTPEQQNS  
 PSGSEQFVRRESCTSRVRSPPSCMVTVTATSEQPHIYIPAPASELDSSTTKGILFVKEYVNA SEVSS  
 GKPVSARYSNVSSIEDSFAMEKKPPCGSTPY SERTTGGICTYCNREIRDCPKITLEHLGICCHEYCFKCG  
 ICSKPMGDLLDQIFIHRDTIHC GKCYEKL F

TRTRPLE - GFP Tag - V

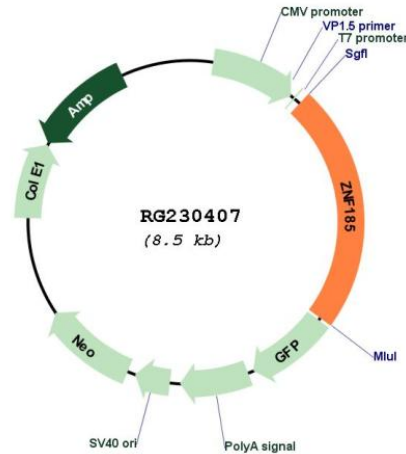
**Restriction Sites:** SgfI-MluI

**Cloning Scheme:**

Cloning sites used for ORF Shuttling:



## Plasmid Map:



ACCN: NM\_001178109

ORF Size: 1980 bp

OTI Disclaimer: The molecular sequence of this clone aligns with the gene accession number as a point of reference only. However, individual transcript sequences of the same gene can differ through naturally occurring variations (e.g. polymorphisms), each with its own valid existence. This clone is substantially in agreement with the reference, but a complete review of all prevailing variants is recommended prior to use. [More info](#)

OTI Annotation: This clone was engineered to express the complete ORF with an expression tag. Expression varies depending on the nature of the gene.

Components: The ORF clone is ion-exchange column purified and shipped in a 2D barcoded Matrix tube containing 10ug of transfection-ready, dried plasmid DNA (reconstitute with 100 ul of water).

Reconstitution Method:

1. Centrifuge at 5,000xg for 5min.
2. Carefully open the tube and add 100ul of sterile water to dissolve the DNA.
3. Close the tube and incubate for 10 minutes at room temperature.
4. Briefly vortex the tube and then do a quick spin (less than 5000xg) to concentrate the liquid at the bottom.
5. Store the suspended plasmid at -20°C. The DNA is stable for at least one year from date of shipping when stored at -20°C.

RefSeq: [NM\\_001178109.1](#), [NP\\_001171580.1](#)

RefSeq Size: 4257 bp

RefSeq ORF: 1983 bp

Locus ID: 7739

UniProt ID: [O15231](#)

Cytogenetics: Xq28

**Gene Summary:** Zinc-finger proteins bind nucleic acids and play important roles in various cellular functions, including cell proliferation, differentiation, and apoptosis. This gene encodes a LIM-domain zinc finger protein. The LIM domain is composed of two contiguous zinc finger domains, separated by a two-amino acid residue hydrophobic linker. The LIM domain mediates protein:protein interactions. Multiple alternatively spliced transcript variants encoding different isoforms have been identified.[provided by RefSeq, May 2010]