

## Product datasheet for **RG230406**

### CPXM (CPXM1) (NM\_001184699) Human Tagged ORF Clone

#### Product data:

Product Type:	Expression Plasmids
Product Name:	CPXM (CPXM1) (NM_001184699) Human Tagged ORF Clone
Tag:	TurboGFP
Symbol:	CPXM1
Synonyms:	CPX1; CPXM
Mammalian Cell Selection:	Neomycin
Vector:	pCMV6-AC-GFP (PS100010)
E. coli Selection:	Ampicillin (100 ug/mL)



[View online »](#)

ORF Nucleotide  
Sequence:

>RG230406 representing NM\_001184699  
Red=Cloning site Blue=ORF Green=Tags(s)

TTTTGTAATACGACTCACTATAGGGCGGCCGGGAATTCGTCGACTGGATCCGGTACCGAGGAGATCTGCC  
GCCGCGATCGCC

ATGTGGGGGCTCCTGCTCGCCCTGGCCGCTTCGCGCCGGCCGTCGGCCCGGCTCTGGGGCGCCAGGA  
ACTCGGTGCTGGGCTCGCGCAGCCGGGACCACCAAGGTCCCAGGCTCGACCCCGCCCTGCATAGCAG  
CCCGGCACAGCCCGCGGAGACAGCTAACGGGACCTCAGAACAGCATGTCCGGATTTCAGTCAATCAAG  
AAGAAAAAGTCAATTATGAAGAAGCGGAAGAAGCTAACTCTAACTCGCCCCACCCCACTGGTGACTGCCG  
GGCCCTTGTGACCCCACTCCAGCAGGGACCCTCGACCCGCTGAGAAACAAGAAACAGGCTGTCTCTC  
TTTGGTCTGGAGTCCCTGCGAGTTTCAGATAGCCGGCTTGAGGCATCCAGCAGCCAGTCTTTGGTCTT  
GGACCACACCGAGGACGGCTCAACATTCAGTCAGGCTGGAGGACGGCGATCTATATGATGGAGCCTGGT  
GTGCTGAGGAGCAGGACCCGATCCATGGTTTCAGGTGGACGCTGGGCACCCACCCGCTCTCGGGTGT  
TATCACACAGGGCAGGAAGTCTGTCTGGAGGTATGACTGGGTACATCATACAAGTCCAGTTCAGCAAT  
GACAGTCGGACCTGGTGGGAAGTAGGAACCACAGCAGTGGGATGGACGCAAGTATTTCTGCCAATTCAG  
ACCCAGAACTCCAGTGCTGAACCTCTGCCGGAGCCCAAGTGGCCCGCTTCATTTCGCCTGCTGCCCA  
GACCTGGCTCCAGGGAGGCGCGCTTGCCTCCGGGCAGAGATCCTGGCCTGCCAGTCTCAGACCCCAAT  
GACCTATTCCTTGAGGCCCTGCGTCCGGATCCTCTGACCCTCTAGACTTTCAGCATCACAATTACAAGG  
CCATGAGGAAGCTGATGAAGCAGGTACAAGAGCAATGCCCAACATCACCCGCATCTACAGCATTGGGAA  
GAGCTACCAGGGCCTGAAGCTGTATGTGATGGAATGTCGGACAAGCCTGGGGAGCATGAGCTGGGGGAG  
CCTGAGGTGCGCTACGTGGCTGGCATGCATGGGAACGAGGCCCTGGGGCGGGAGTTGCTTCTGCTCCTGA  
TGCAGTTCCTGTGCCATGAGTTCTGCGAGGGAACCCACGGGTGACCCGGCTGCTCTCTGAGATGCGCAT  
TCACCTGCTGCCCTCCATGAACCTGATGGCTATGAGATCGCCTACCACCGGGTTTCAGAGCTGGTGGGC  
TGGGCCGAGGGCCGCTGGAACAACCAGAGCATCGATCTTAACCATAATTTTGTGACCTCAACACACCAC  
TGTGGGAAGCACAGGACGATGGGAAGGTGCCCCACATCGTCCCCAACCATCACCTGCCATTGCCACTTA  
CTACACCTGCCCAATGCCACCGTGGCTCCTGAAACGCGGGCAGTAATCAAGTGGATGAAGCGGATCCCC  
TTTGTGCTAAGTGCCAACTCCACGGGGCATGAATGACTTCAGTACCTACACACCAACTGCTTTGAGG  
TCACTGTGGAGCTGTCTGTGACAAGTTCCTCACGAGAATGAATTGCCCCAGGAGTGGGAGAACAACAA  
AGACGCCCTCCTACCTACCTGGAGCAGGTGCGCATGGGCATTGCAGGAGTGGTGGGACAGGACACG  
GAGCTTGGGATTGCTGACGCTGTCAATTGCCGTGGATGGGATTAACCATGACGTGACCACGGCGTGGGGCG  
GGGATTATTGGCGTCTGCTGACCCAGGGGACTACATGGTACTGCCAGTCCCGAGGGCTACCATTCAAT  
GACACGGAAGTGTGGGTACCTTTGAAGAGGGCCCTTCCCCTGCAATTTCTGTGCTCACCAAGACTCCC  
AAACAGAGGCTGCGCGAGCTGCTGGCAGCTGGGGCCAAGGTGCCCCCGACCTTCGACGGCGCTGGAGC  
GGCTAAGGGGACAGAAGGAT

ACGCGTACGCGGCCGCTCGAG – GFP Tag – GTTTAA

Protein Sequence: >RG230406 representing NM\_001184699  
 Red=Cloning site Green=Tags(s)

MWGLLLALAAFAPAVGPALGAPRNSVLGLAQPGETTKVPGSTPALHSSPAQPPAETANGTSEQHVIRVIK  
 KKKVIMKKRKKL TLTRPTPLVTAGPLVTPTAGTLDPAEKQETGCPPLGLESRLVSDSRLEASSSQSFG  
 GPHRGRLNIQSGLEDGLYDGAWCAEEQDADPWFQVDAGHPTRFSGVITQGRNSVWRYDWVTSYKVF  
 SNDSRTWWGSRNHSSGMDAVFPANSDPETPVLNLLPEPQVARFIRLLPQTLWQGGAPCLRAEILACP  
 VSDPNDLFLEAPASGSDPLDFQHNYKAMRKLKQVQEQCPNITRIYSIGKSYQGLKLYMEMSDKPG  
 HELGPEVRYVAGMHGNEALGRELLLLMQFLCHEFLRGNPRVTRLLSEMRIHLLPSMNPDGYEIA  
 YHRGSELVGVAEGRWNNQSIDLNHNFADLNTPLWEAQDDGKVPHIVPNHHLPLPTYTLPNATVAP  
 ETRAVIKWMKRIPFVLSANLHGGMDFSYLHTNCFEVTVELSCDKFPHENELPQEWENKDAL  
 LTYLEQVRMGIAGVVRDKDT ELGIADAVIAVDGINHDVTTAWGGDYWRLLTPGDYMTASA  
 EGYHSVTRNCRVTFEEGPFPCNFVLTKT  
 KQRLRELLAAGAKVPPDLRRRLERLRGQKD

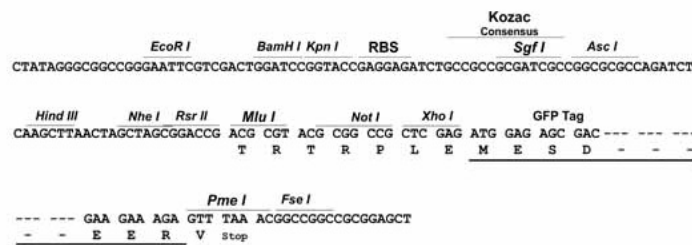
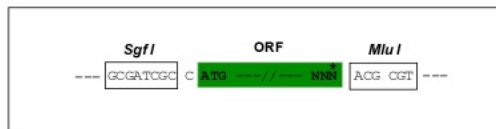
TRTRPLE - GFP Tag - V

Restriction Sites:

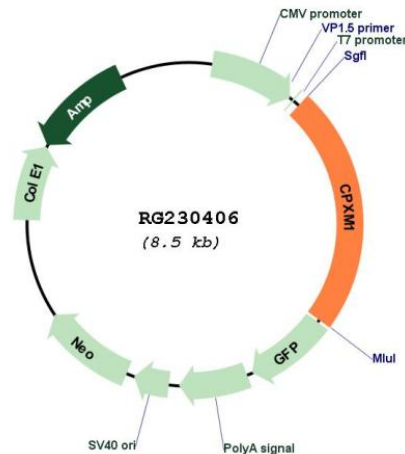
SgfI-MluI

Cloning Scheme:

Cloning sites used for ORF Shuttling:



## Plasmid Map:



ACCN: NM\_001184699

ORF Size: 1980 bp

OTI Disclaimer: The molecular sequence of this clone aligns with the gene accession number as a point of reference only. However, individual transcript sequences of the same gene can differ through naturally occurring variations (e.g. polymorphisms), each with its own valid existence. This clone is substantially in agreement with the reference, but a complete review of all prevailing variants is recommended prior to use. [More info](#)

OTI Annotation: This clone was engineered to express the complete ORF with an expression tag. Expression varies depending on the nature of the gene.

Components: The ORF clone is ion-exchange column purified and shipped in a 2D barcoded Matrix tube containing 10ug of transfection-ready, dried plasmid DNA (reconstitute with 100 ul of water).

Reconstitution Method:

1. Centrifuge at 5,000xg for 5min.
2. Carefully open the tube and add 100ul of sterile water to dissolve the DNA.
3. Close the tube and incubate for 10 minutes at room temperature.
4. Briefly vortex the tube and then do a quick spin (less than 5000xg) to concentrate the liquid at the bottom.
5. Store the suspended plasmid at -20°C. The DNA is stable for at least one year from date of shipping when stored at -20°C.

RefSeq: [NM\\_001184699.2](#)

RefSeq Size: 2187 bp

RefSeq ORF: 1983 bp

Locus ID: 56265

UniProt ID: [Q96SM3](#)

Cytogenetics: 20p13

Protein Families: Druggable Genome, Protease, Secreted Protein

Gene Summary: This gene likely encodes a member of the carboxypeptidase family of proteins. Cloning of a comparable locus in mouse indicates that the encoded protein contains a discoidin domain and a carboxypeptidase domain, but the protein appears to lack residues necessary for carboxypeptidase activity.[provided by RefSeq, May 2010]