

Product datasheet for **RG230405**

ZNF540 (NM_001172225) Human Tagged ORF Clone

Product data:

Product Type:	Expression Plasmids
Product Name:	ZNF540 (NM_001172225) Human Tagged ORF Clone
Tag:	TurboGFP
Symbol:	ZNF540
Synonyms:	Nbla10512
Mammalian Cell Selection:	Neomycin
Vector:	pCMV6-AC-GFP (PS100010)
E. coli Selection:	Ampicillin (100 ug/mL)



[View online »](#)

ORF Nucleotide Sequence:

>RG230405 representing NM_001172225
 Red=Cloning site Blue=ORF Green=Tags(s)

TTTTGTAATACGACTCACTATAGGGCGGCCGGAATTCGTCGACTGGATCCGGTACCGAGGAGATCTGCC
 GCC**CGGATCGCC**

ATGGCCCATGCATTGGTGACGTTACGGGATGTGGCTATAGACTTCTCTCAGAAGGAATGGGAGTGCCTGG
 AACTACCCAGAGGAAATTGTACAGAGATGTGATGTTGGAGAATTATAATAACTTGGTCTCACTGGGATA
 TTCTGGCTCAAAGCCAGATGTGATTACCTTACTGGAGCAAGGAAAGAGCCCTGCGTGGTGGCGAGGGAT
 GTGACAGGAAGACAGTGCCTCGTTTGTATCCAGGCATAAGACCAAGAAATTATCTTCAGAAAAGGACA
 TTCATGAAATCAGTTTATCCAAAGAGAGTATAATAGAAAAAGTAAACTCTTCGCTGAAAGGATCCAT
 TTTTAGAAATGAGTGGCAGAACAAAAGTGAGTTTGAGGGTCAACAGGGACTTAAAGAAAGATCTATCAGT
 CAAAAGAAAATCGTCTCTAAAAAATGTCAACTGATAGAAAACGTCCTCTTTTACTCTGAATCAGAGAA
 TTCACAATAGTGAGAAAAGCTGTGACTCACACTGGTTCAACATGGGAAAATAGATTCTGATGTGAAACA
 TGATTGTAAGAAATGTGGGAGTACTTTTAAATAATGTCTATCAGCTTACTCTCCATCAGAAAATTCATACT
 GGTGAAAATCCTGTAATGTGAGAAAATGTGGGAAAGTTTTTAGTCATAGCTATCAACTACTCTGCATC
 AGAGATTTCACTGGTGAAGAACCTATGAATGTCAAGAATGTGGGAAGACCTTACTCTTTACCCACA
 ACTTAATCGCATCAGAAAATTCACACTGGTAAAAACCTATATGTGTAAGAAATGTGATAAGGGTTTT
 TTAGTAGATTAGAACTTACTCAACATAAAGAATTCATACTGGTAAGAAATCTTATGAATGTAAGAAAT
 GTGGAAAAGTTTTCACTTATTTTCTACTTTAAAGAACATGAGAGAATTCATACAGGTAAGAAACCTA
 TGAATGTAAGGAGTGTGGGAAAGCTTTTAGTGTATGCGGACAACCTACCCGTCATCAGAAAATTCATACT
 GGTGTAACCCCTACGAATGTAAGGAATGTGGAAAGACCTTTAGACTTAGTTTTTACCTTACTGAACACA
 GAAGAACTCATGCAGGTAAAGAACCTTATGAATGTAAGGAGTGTGGGAAATCATTAAATGTGCGTGGACA
 GCTTAATCGGCATAAAACAATCCATACTGGTATAAAACCTTTTGCATGTAAAGGTGTGAGAAGGCTTTT
 AGTTATAGTGGTGACCTCAGAGTACATTCTAGAATTCATACTGGAGAGAAACCATATGAATGTAAGGAAT
 GCGGAAAAGCCTTTATGCTTCGTTACGTCCTTACTGAACATCAGAGACTTCATACTGGTGTGAAGCCCTA
 CGAATGTAAGGAATGTGGGAAGACCTTTGAGTTCGTTCTCAAATTAGTCTACATAAGAAAATTCATACT
 GATGTGAAGCCCTACAAATGTGTACGATGTGGGAAGACCTTTAGATTTGGTTTCTACCTTACTGAACACC
 AGAGAATTCACACTGGTAAAAGCCCTATAAATGTAAGAAATGTGGAAAGCCTTTATTCGTAGAGGGAA
 TCTTAAAGAACATCTGAAAATTCATTCTGGTTTAAACCCCTACTGACTGTAAGAAATGTGGGAAGTCTTT
 AGTCGGCGTGGCAGTTCCTGAAATCAGAAAATTCATACGGGTGTAACCATACAAATGTAAGAAAT
 GTGGGAAGGCCTTTAGTCGTAGTGTAGACCTTAGAATACATCAAAGAATTCATACTGGTGAAGAACCTA
 TGAGTGTAAACAATGTGGGAAGGCCTTTAGACTTAATTCACACCTTACTGAACATCAGAGAATTCACACT
 GGTGAGAAACCTATGAGTGTAAAGGTATGTAGAAAGGCCTTTAGACAATATTCACATCTTTATCAACATC
 AGAAAACCTATAATGTAATT

ACGCGTACGCGGCCGCTCGAG – GFP Tag – GTTTAA

Protein Sequence: >RG230405 representing NM_001172225
 Red=Cloning site Green=Tags(s)

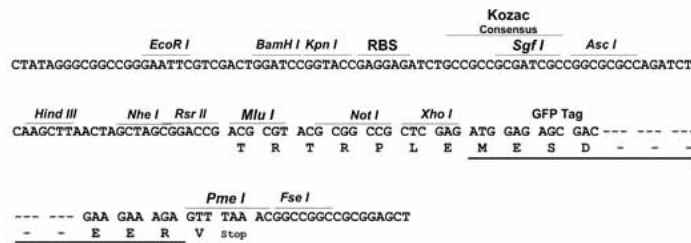
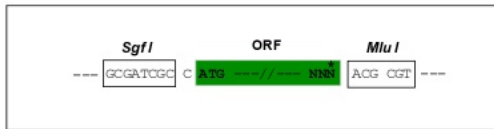
MAHALVTRFDVAIDFSQKEWECLDTTQRKLYRDVMLENYNNLVSLGYSGSKPDVITLLEQGKEPCVVARD
 VTGRQCPGLLSRHKTKKLSSEKDIHEISLSKESIIEKSKTLRLKGSIFRNEWQNKSEFEGQQGLKERSIS
 QKKIVSKKMSTDRKRPSFTLNQRIHNSEKSCDShLVQHGKIDSDVKHDCKEKGSTFNNVYQLTLHQKIHT
 GEKSCKCEKCGKVF SHSYQLTLHQRFHTEKPYECQECGKTFTLYPQLNRHQKIHTGKKPYMCKKCDKGF
 FSRLLELTQHKRIHTGKKSYECKEKGKVFQIFFYFKEHERIHTGKKPYECKEKGAFSVCGQLTRHQKIHT
 GVKPYECKEKGKTFRLSFYLTEHRRTHAGKKPYECKEKGKSFNVRGQLNRHKTIHTGIKPFACKVCEKAF
 SYGDLRVHSRIHTGKPYECKEKGAFMLRSVLTEHQR LHTEGKPYECKEKGKTFRVRQSISLHKKIHT
 DVKPYKVCRCGKTFRFGFYLTEHQR IHTGKPYKCKEKGAFIRRGNLKEHLKIHSGLKPYDCKEKGKSF
 SRRGQFTEHQKIHTGVKPYKCKEKGAFSRSVDLRIHQRIHTGKPYECKQCGKAFRLNSHLTEHQR IHT
 GEKPYECKVCRKAFRQYSHLYQHQT HNVI

TRTRPLE - GFP Tag - V

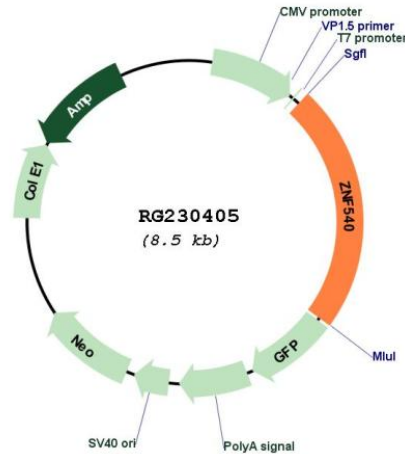
Restriction Sites: SgfI-MluI

Cloning Scheme:

Cloning sites used for ORF Shuttling:



Plasmid Map:



ACCN: NM_001172225

ORF Size: 1980 bp

OTI Disclaimer: The molecular sequence of this clone aligns with the gene accession number as a point of reference only. However, individual transcript sequences of the same gene can differ through naturally occurring variations (e.g. polymorphisms), each with its own valid existence. This clone is substantially in agreement with the reference, but a complete review of all prevailing variants is recommended prior to use. [More info](#)

OTI Annotation: This clone was engineered to express the complete ORF with an expression tag. Expression varies depending on the nature of the gene.

Components: The ORF clone is ion-exchange column purified and shipped in a 2D barcoded Matrix tube containing 10ug of transfection-ready, dried plasmid DNA (reconstitute with 100 ul of water).

Reconstitution Method:

1. Centrifuge at 5,000xg for 5min.
2. Carefully open the tube and add 100ul of sterile water to dissolve the DNA.
3. Close the tube and incubate for 10 minutes at room temperature.
4. Briefly vortex the tube and then do a quick spin (less than 5000xg) to concentrate the liquid at the bottom.
5. Store the suspended plasmid at -20°C. The DNA is stable for at least one year from date of shipping when stored at -20°C.

RefSeq: [NM_001172225.3](#)

RefSeq Size: 3237 bp
RefSeq ORF: 1983 bp
Locus ID: 163255
UniProt ID: [Q8NDQ6](#)
Cytogenetics: 19q13.12
Protein Families: Transcription Factors
Gene Summary: May act as a transcriptional repressor.[UniProtKB/Swiss-Prot Function]