

Product datasheet for **RG230393**

IGSF10 (NM_001178145) Human Tagged ORF Clone

Product data:

Product Type:	Expression Plasmids
Product Name:	IGSF10 (NM_001178145) Human Tagged ORF Clone
Tag:	TurboGFP
Symbol:	IGSF10
Synonyms:	CMF608
Mammalian Cell Selection:	Neomycin
Vector:	pCMV6-AC-GFP (PS100010)
E. coli Selection:	Ampicillin (100 ug/mL)



[View online »](#)

ORF Nucleotide Sequence:

>RG230393 representing NM_001178145
 Red=Cloning site Blue=ORF Green=Tags(s)

TTTTGTAATACGACTCACTATAGGGCGGCCGGAATTCGTCGACTGGATCCGGTACCGAGGAGATCTGCC
 GCC**GCGATCGCC**

ATGGTGGAAAGCGTAAGGCTTGAGAACCAGCCCTGTGACCTAAGAGTGGGCAGCTGGATCCACGTCTACC
 CTAATGGATCCCTGTTTATTGGATCAGTAACAGAAAAAGACAGTGGTGTCTACTTGTGTGGCAAGAAA
 CAAAATGGGGATGATCTGATACTGATGCATGTTAGCCTAAGACTGAAACCTGCCAAAATTGACCACAAG
 CAGTATTTTAGAAAGCAAGTGCTCCATGGGAAAGATTTCCAAGTAGATTGCAAAGCTTCCGGCTCCCCAG
 TGCCAGAGATATCTTGGAGTTTGCCTGATGGAACCATGATCAACAATGCAATGCAAGCCGATGACAGTGG
 CCACAGGACTAGGAGATATACCTTTTTCAACAATGGAACTTTATACTTCAACAAAGTTGGGGTAGCGGAG
 GAAGGAGATTACTTGTATGCCAGAACACCCTAGGAAAGATGAAATGAAGGTCCACTTAACAGTTA
 TAACAGCTGCTCCCGGATAAAGCAGAGTAACAAAACCAACAAGAGAATCAAAGCTGGAGACACAGCTGT
 CCTTGACTGTGAGGTCACTGGGGATCCCAAACCAAAAATATTTTGGTTGCTGCCTCCAATGACATGATT
 TCCTTCTCCATTGATAGGTACACATTTTCATGCCAATGGGTCTTTGACCATCAACAAAGTAAACTGCCTG
 ATTCTGGAGAGTACGTATGTGTAGCCCGAAATCCCAAGTGGGGATGACACCAAAATGTACAAACTGGATG
 GGTCTCTAAACCTCCATTAATCAATGGTCTGTATACAAACAGAAGTGTATTAAAGCCACAGCTGTGAGA
 CATTCCAAAAACACTTTGACTGCAGAGCTGAAGGGACACCATCTCCTGAAGTCATGTGGATCATGCCAG
 ACAATATTTTCTCACAGCCCCATACTATGGAAGCAGAATCACAGTCCATAAAAAATGAACTTGGAAAT
 TAGGAATGTGAGGCTTTCAGATTCAGCCGACTTTATCTGTGTGGCCGAAATGAAGGTGGAGAGAGCGTG
 TTGGTAGTACAGTTAGAAGTACTGGAAATGCTGAGAAGACCGACATTTAGAAATCCATTTAATGAAAAA
 TAGTTGCCAGCTGGGAAAGTCCACAGCATTGAATTGCTCTGTTGATGGTAACCCACCACCTGAAATAAT
 CTGGATTTTACCAAATGGCACACGATTTTCCAATGGACCACAAAGTTATCAGTATCTGATAGCAAGCAAT
 GTTCTTTTATCATTTCTAAAACAACCTCGGAGGATGCAGGAAAAATATCGCTGTGAGCTAGGAATAAAG
 TTGGCTATATTGAGAAATTAGTCATATTAGAAATTGGCCAGAAGCCAGTATTCTTACCTATGCACCAGG
 GACAGTAAAAGGCATCAGTGGAGAATCTCTACTGCATTGTGTGTCTGATGGAATCCCTAAGCCAAAT
 ATCAAATGGACTATGCCAAGTGGTTATGTAGTAGACAGGCCTCAAATTAATGGGAAATACATATTGCATG
 ACAATGGCACCTTAGTCATTAAGAAGCAACAGCTTATGACAGAGGAACTATATCTGTAAGGCTCAAAA
 TAGTGTGGTCTACACTGATTACTGTTCCAGTAATGATTGTAGCCTACCCTCCCGAATTACAAATCGT
 CCACCCAGGAGTATTGTACCAGGACAGGGGCAGCCTTTCAGCTCCACTGTGTGGCCTTGGGAGTCCCA
 AGCCAGAAATCACATGGGAGATGCCTGACCACTCCCTTCTCTCAACGGCAAGTAAAGAGAGGACACATGG
 AAGTGAGCAGTTCACCTACAAGGTACCCTAGTCATTCAGAATCCCAAACCTCCGATTCTGGGATATAC
 AAATGCACAGCAAAGAACCCACTTGGTAGTGATTATGCAGCAACGTATATTCAAGTAATC

ACGCGTACGCGGCCGCTCGAG - GFP Tag - GTTTAA

Protein Sequence:

>RG230393 representing NM_001178145
 Red=Cloning site Green=Tags(s)

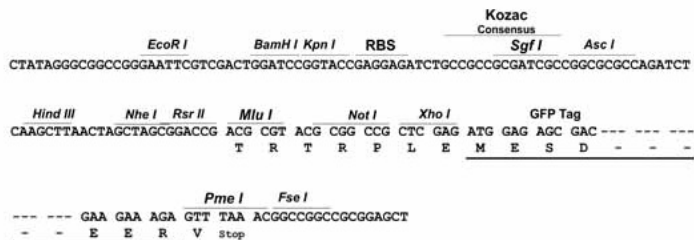
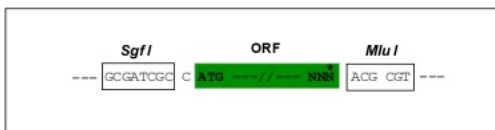
MVESVRLNQPCDLRVGSIHVYPNGSLFIGSVTEKDSGVYLCVARNKMGDDLILMHVSLRLKPAKIDHK
 QYFRKQVLHGKDFQVDCKASGSPVPEISWSLPDGTMINNAMQADDSGHRTRRYTLFNNGLTYFNKVGVAE
 EGDYTCYAQNTLKGDEMKVHLTVITAAPRIRQSNKTNKRIKAGDTAVLDCEVTGDPKPKIFWLLPSNDMI
 SFSIDRYTFHANGSLTINKVKLLDSGEYVCVARNPSGDDTKMYKLDVVSPPPLINGLYTNRTVIKATAVR
 HSKKHFDCAEGTPSPEVMWIMPDIIFLTAPYYGSRITVHKNGTLEIRNVRLSDSADFCVARNEGGEV
 LVVQLEVLEMLRRPTFRNPFNEKIVAQLGKSTALNCSVDGNPPPEIWIWLPNGTRFSNGPQSYQYLIASN
 GSFIIISKTTREDAGKYRCAARNKVGVIKLVILEIGQKPVILTYAPGTVKGISGESLSLHCVSDGIPKPN
 IKWTMPSGYVVDPRQINGKYILHDNGTLVIKEATAYDRGNYICKAQNSVGHTLITVPMIVAYPPRITNR
 PPRSIVTRTGAAFQLHCVLGVKPEITWEMPDHLLSTASKERTHGEQLHLQGLTVIQNPQTSDSGIY
 KCTAKNPLGSDYAATYIQVI

TRTRPLE - GFP Tag - V

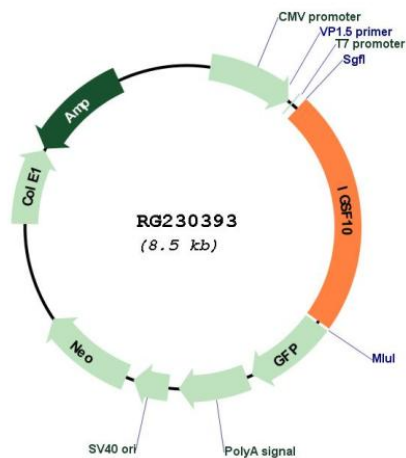
Restriction Sites: SgfI-MluI

Cloning Scheme:

Cloning sites used for ORF Shutting:



Plasmid Map:



ACCN: NM_001178145

ORF Size: 1950 bp

OTI Disclaimer:	The molecular sequence of this clone aligns with the gene accession number as a point of reference only. However, individual transcript sequences of the same gene can differ through naturally occurring variations (e.g. polymorphisms), each with its own valid existence. This clone is substantially in agreement with the reference, but a complete review of all prevailing variants is recommended prior to use. More info
OTI Annotation:	This clone was engineered to express the complete ORF with an expression tag. Expression varies depending on the nature of the gene.
Components:	The ORF clone is ion-exchange column purified and shipped in a 2D barcoded Matrix tube containing 10ug of transfection-ready, dried plasmid DNA (reconstitute with 100 ul of water).
Reconstitution Method:	<ol style="list-style-type: none">1. Centrifuge at 5,000xg for 5min.2. Carefully open the tube and add 100ul of sterile water to dissolve the DNA.3. Close the tube and incubate for 10 minutes at room temperature.4. Briefly vortex the tube and then do a quick spin (less than 5000xg) to concentrate the liquid at the bottom.5. Store the suspended plasmid at -20°C. The DNA is stable for at least one year from date of shipping when stored at -20°C.
RefSeq:	NM_001178145.2
RefSeq Size:	2824 bp
RefSeq ORF:	1809 bp
Locus ID:	285313
UniProt ID:	Q6WRI0
Cytogenetics:	3q25.1
Protein Families:	Druggable Genome, Transmembrane
Gene Summary:	Involved in the control of early migration of neurons expressing gonadotropin-releasing hormone (GNRH neurons) (By similarity). May be involved in the maintenance of osteochondroprogenitor cells pool (By similarity).[UniProtKB/Swiss-Prot Function]