

Product datasheet for **RG230391**

KLHL13 (NM_001168300) Human Tagged ORF Clone

Product data:

Product Type:	Expression Plasmids
Product Name:	KLHL13 (NM_001168300) Human Tagged ORF Clone
Tag:	TurboGFP
Symbol:	KLHL13
Synonyms:	BKLHD2
Mammalian Cell Selection:	Neomycin
Vector:	pCMV6-AC-GFP (PS100010)
E. coli Selection:	Ampicillin (100 ug/mL)



[View online »](#)

ORF Nucleotide Sequence:

>RG230391 representing NM_001168300
 Red=Cloning site Blue=ORF Green=Tags(s)

TTTTGTAATACGACTCACTATAGGGCGGCCGGAATTCGTCGACTGGATCCGGTACCGAGGAGATCTGCC
 GCC**CGGATCGCC**

ATGCTGAGGTTTATATCCCATTTGTATTGTTGCAGCTCAAAGAAGATTGTTTCAGAGGATGACAAGTGTA
 TTCTGAGTAGATCTCTCGTGAAGAGGAAGACCAACACATGAAATTGTCCCTGGAGGCAGCGAAATGGG
 CCTCTCATCCCATTTGCAGTCTTCCAAGCAGGACCTACACGCATCTTTACCAGCAATACCCACAGTTCT
 GTGGTGTACAGGGCTTTGACCAGCTTCGACTGAAGGATTGCTTTGTGATGTGACCCTGATGCCAGGTG
 ACACAGATGATGCTTTCCCTGTGCATAGAGTCATGATGGCATCTGCTAGTGATTACTTCAAGGCTATGTT
 CACAGGTGGAATGAAAGAACAAGATTTAATGTGCATTAACCTTCATGGTGTGAGCAAAGTCGGTCTAAGG
 AAAATTATTGATTTCACTTATACTGCAAAGCTTTCTCTAATATGGACAACCTTCAAGACACGCTGGAAG
 CTGCCAGTTTCTACAGATTCTGCCAGTTTGGACTTCTGTAAAGTGTCTCATATCTGGGGTCACTTT
 AGACAACGTGTTGAAGTTGGACGGATTGCCAACCTACAATCTAACCGAAGTGGATAAATACGTTAAC
 AGTTTCGTCTGAAGAATTTTCCCTGCATTGCTGAGCACAGGGGAGTTCTTGAAACTCCCTTTTGAGCGTC
 TTGCCTTCGTGCTTTCCAGTAATAGCCTTAAGCACTGACTGAACTTGAGCTCTTAAGGCTACCTGTCG
 TTGGCTTCGCCTGGAAGAGCCTCGGATGGACTTTGCTGCAAAATTAATGAAGAACATACGATTTCCACTG
 ATGACACCACAGGAGCTCATTAAATACGTGCAAACGGTGGATTTTCATGAGAACTGACAATACTTGTGTGA
 ATTTGCTTTTGAAGCCAGCAATTACCAAAATGATGCCATATATGCAGCCAGTTATGCAGTCAGACAGGAC
 TGCCATTAGGTCTGACACCCTCACTTGGTTACTAGGAGGAGTGTGAGGCAGCAGCTGGTTGTGAGT
 AAGGAATTGCCATGATGATGAAAAGGCCATGAGTGGAAATCGTTAGCCCCATGGATGCCCAAGGT
 ACCAGCATGGCATCGCCGTCATTGGAAATTTTCTCTATGTGTTGGCGGACAGAGTAATTATGATACAAA
 AGGAAAAACGGCAGTTGATACAGTCTTACAGATTTGATCCTCGATACAATAAATGGATGCAAGTTGCATCT
 TTAATGAAAAGCGCACCTTCTCCACCTAAGTGCCTCAAAGGATATCTGTATGCAGTTGGTGGCGAA
 ATGCAGCAGGTGAACTGCCACAGTAGAATGTTACAATCCAAGAACAATGAATGGACCTATGTTGCCAA
 AATGAGTGAGCCCACTATGGCCATGCTGGAAGTGTGATGGAGGAGTGTATATTTACAGGAGGAATT
 ACTCATGATACTTTCAAAGGAGCTCATGTGCTTTGACCCTGATACTGACAAATGGATCCAGAAGGCGC
 CAATGACCACTGTCAGAGGTCTGCATTGCATGTGTACAGTGGGAGAAAGGCTCTATGTCATTGGTGGCAA
 TCACTTCAGAGGAACAAGTATTATGATGATGTCCTAAGCTGTGAATACTATTACCTATCCTTGACCAG
 TGGACCCCAATTGCTGCCATGTTAAGAGGGCAGAGTGTGTTGGGGTCTGCTCTCGAAAAATAAATCT
 ATGTGGTTGGGGGATTTCTTGAATAATCGTTGTATGGTAGAGATAGTGCAGAAATATGATCCAGATAA
 AGATGAATGGCATAAGGTTTTGATCTGCCAGAATCCCTTGGTGGCATTGCTGCTGCACACTCACAGTT
 TTTCCACCAGAAGAAACCACACCATCACCTTCTAGAGAGTCCCCTCTTTCTGCACCT

ACGCGTACGCGGCCGCTCGAG – GFP Tag – GTTTAA

Protein Sequence:

>RG230391 representing NM_001168300
 Red=Cloning site Green=Tags(s)

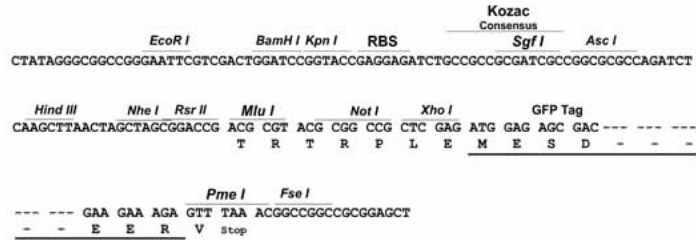
MLRFISHLYCCSSKEDCSDDKCILSRSLVEEDQHMKLSLGGSEMGLSSHLQSSKAGPTRIFTSNTHSS
 VVLQGFQDLRLEGLLCDVTLMPGDTDDAFVHRVMMASASDYFKAMFTGGMKEQDLMCIKLHGVSKVGLR
 KIIDFIYAKLSLNMNDLQDTLEAASFLQILPVLDFCKVFLISGVTLDNCVEVGRIANTYNLTEVDKYVN
 SFVLKNFPALLSTGEFLKLPFERLAFVLSNSLKHCTELELFKATCRWLRLEEPRMDFAAKLMKNIRFPL
 MTPQELINYVQTVDFMRDNTCVNLLLEASNYQMPPYMQPVMQSDRTAIRSDTTHLVTLGGVLRQQLVVS
 KELRMYDEKAHEWKS LAPMDAPRYQHGI AVIGNFLYVVGQSNYDTKGTAVDTVFRFDPRYNKWMQVAS
 LNEKRFFHLSALKGYLYAVGGRNAAGELPTVECYNPRTNEWYVAKMSEPHYGHAGTVYGGVMISSGGI
 THDTFQKELMCFDPDQKWIQKAPMTTVRGLHMCCTVGERLYVIGGNHFRGTSYDDVLSCEYYSPILDQ
 WTPIAAMLRGQSDVGVAVFENKIYVVGYSWNNRCMVEIVQKYDPKDEWHKVFDPESLGGIRACTLTV
 FPPEETTPSPSRESPLSAP

TRTRPLE – GFP Tag – V

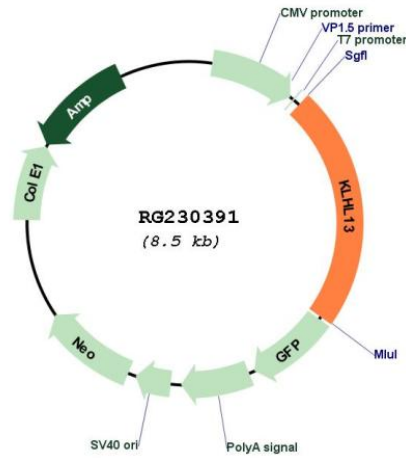
Restriction Sites: SgfI-MluI

Cloning Scheme:

Cloning sites used for ORF Shutting:



Plasmid Map:



ACCN: NM_001168300

ORF Size: 1947 bp

OTI Disclaimer:	The molecular sequence of this clone aligns with the gene accession number as a point of reference only. However, individual transcript sequences of the same gene can differ through naturally occurring variations (e.g. polymorphisms), each with its own valid existence. This clone is substantially in agreement with the reference, but a complete review of all prevailing variants is recommended prior to use. More info
OTI Annotation:	This clone was engineered to express the complete ORF with an expression tag. Expression varies depending on the nature of the gene.
Components:	The ORF clone is ion-exchange column purified and shipped in a 2D barcoded Matrix tube containing 10ug of transfection-ready, dried plasmid DNA (reconstitute with 100 ul of water).
Reconstitution Method:	<ol style="list-style-type: none">1. Centrifuge at 5,000xg for 5min.2. Carefully open the tube and add 100ul of sterile water to dissolve the DNA.3. Close the tube and incubate for 10 minutes at room temperature.4. Briefly vortex the tube and then do a quick spin (less than 5000xg) to concentrate the liquid at the bottom.5. Store the suspended plasmid at -20°C. The DNA is stable for at least one year from date of shipping when stored at -20°C.
RefSeq:	NM_001168300.1 , NP_001161772.1
RefSeq Size:	3471 bp
RefSeq ORF:	1950 bp
Locus ID:	90293
UniProt ID:	Q9P2N7
Cytogenetics:	Xq24
Protein Pathways:	Ubiquitin mediated proteolysis
Gene Summary:	This gene encodes a BTB and kelch domain containing protein and belongs to the kelch repeat domain containing superfamily of proteins. The encoded protein functions as an adaptor protein that complexes with Cullin 3 and other proteins to form the Cullin 3-based E3 ubiquitin-protein ligase complex. This complex is necessary for proper chromosome segregation and completion of cytokinesis. Alternate splicing results in multiple transcript variants. [provided by RefSeq, Mar 2010]