

Product datasheet for **RG230385**

XPNPEP1 (NM_001167604) Human Tagged ORF Clone

Product data:

| | |
|---------------------------|---|
| Product Type: | Expression Plasmids |
| Product Name: | XPNPEP1 (NM_001167604) Human Tagged ORF Clone |
| Tag: | TurboGFP |
| Symbol: | XPNPEP1 |
| Synonyms: | APP1; SAMP; XPNPEP; XPNPEPL; XPNPEPL1 |
| Mammalian Cell Selection: | Neomycin |
| Vector: | pCMV6-AC-GFP (PS100010) |
| E. coli Selection: | Ampicillin (100 ug/mL) |



[View online »](#)

ORF Nucleotide Sequence:

>RG230385 representing NM_001167604
 Red=Cloning site Blue=ORF Green=Tags(s)

TTTTGTAATACGACTCACTATAGGGCGGCCGGAATTCGTCGACTGGATCCGGTACCGAGGAGATCTGCC
 GCC**CGGATCGCC**

ATGGCAGCCTCCAGAAAGCCACCGCGAGTAAGGGTGAATCACCAGGATTTCAACTGAGAAATTTAAGAA
 TAATTGAACCTAACGAGGTGACACACTCAGGAGACACAGGTGTGGAAACAGACGGCAGAATGCCTCCAAA
 GGTGACTTCAGAGCTGCTTCGGCAGCTGAGACAAGCCATGAGGAACTCTGAGTATGTGACCGAACCGATC
 CAGGCCTACATCATCCCATCGGGAGATGCTCATCAGAGTGAGTATATTGCTCCATGTGACTGTGCGCGGG
 CTTTTGTCTCTGGATTGATGGCTCTGCGGGCACAGCCATCATCACAGAAGAGCATGCAGCCATGTGGAC
 TGACGGGCGCTACTTTCTCCAGGCTGCCAAGCAAATGGACAGCAACTGGACACTTATGAAGATGGTCTG
 AAGGACACACCAACTCAGGAAGACTGGTGGTGTGAGTGTGCTTCTGAAGGATCCAGGGTTGGTGTGGACC
 CCTTGATCATTCTACAGATTATTGGAAGAAAATGGCCAAAGTTCTGAGAAGTCCCGGCCATCACCTCAT
 TCCTGTCAAGGAGAACCTCGTTGACAAAATCTGGACAGACCGTCTGAGCGCCCTTGCAAGCCTCTCCTC
 AACTGGCCTGGATTACACAGGCATCTCTGGAAGGACAAGGTTGCAGACCTTCGGTTGAAAATGGCTG
 AGAGGAACGTCATGTGGTTTGTGGTCACTGCCTTGGATGAGATTGCGTGGCTATTTAATCTCCGAGGATC
 AGATGTGGAGACAATCCAGTATTTTTCTCCTACGCAATCATAGGACTAGAGACGATCATGCTTTCATT
 GATGGTGACCGCATAGACGCCCCAGTGTGAAGGAGCACCTGCTTCTTGACTTGGGTCTGGAAGCCGAAT
 ACAGGATCCAGGTGCATCCCTACAAGTCCATCCTGAGCGAGCTCAAGGCCTGTGTGCTGACCTCTCCCC
 AAGGGAGAAGGTGTGGGTGAGTACAAGCCAGCTATGCTGTGAGCGAGACCATCCCCAAGGACCACCGC
 TGCTGTATGCCTTACACCCCATCTGCATCGCCAAAGCTGTGAAGAATTCAGTGAGTCAAGGATGAGG
 GGCGGGCTCACATTAAGATGCTGTTGCTCTCTGTGAACCTTTAACTGGCTGGAGAAAGAGGTTCCCAA
 AGGTGGTGTGACAGAGATCTCAGCTGCTGACAAAAGCTGAGGAGTTTCGACAGGCAACAGGCAGACTTGTG
 GACCTGAGCTTCCCAACAATTTCCAGTACGGGACCCAACGGCGCCATCATTCACTACGCGGATGGACCA
 CAGATGTGACGCGGACAATGCATTTTGGGACCCCTACAGCCTACGAGAAGGAATGCTTACATATGTCT
 CAAGGGCCACATAGCTGTGAGTGACGCCGTTTTCCCGACTGGAACCAAAGGTACCTTCTTGACTCCTTT
 GCCCGTTCAGCTTTATGGGATTCAGGCCTAGATTACTTGCACGGGACTGGACATGGTGTGGGTCTTTTT
 TGAATGTCCATGAGGGTCTTGCAGCATCAGTTACAAAACATTCTCTGATGAGCCCTGGAGGCAGGCAT
 GATTGTCACTGATGAGCCCGGTACTATGAAGATGGGGCTTTTGAATTCGATTGAGAATGTTGCTCT
 GTGGTTCTGTGAAGACCAAGTATAATTTAATAACCGGGGAAGCCTGACCTTTGAACTCTAACATTGG
 TTCCAATTCAGACCAAAATGATAGATGTGGATTCTTACAGACAAGAGTGCAGCTGGCTCAACAATTA
 CCACCTGACCTGCAGGGATGTGATTGGGAAGGAATTGCAGAAACAGGGCCGCCAGGAAGCTCTCAGTGG
 CTCATCAGAGAGACGCAACCCATCTCCAACAGCAT

ACGCGTACGCGGGCCGCTCGAG - GFP Tag - GTTTAA

Protein Sequence:

>RG230385 representing NM_001167604
 Red=Cloning site Green=Tags(s)

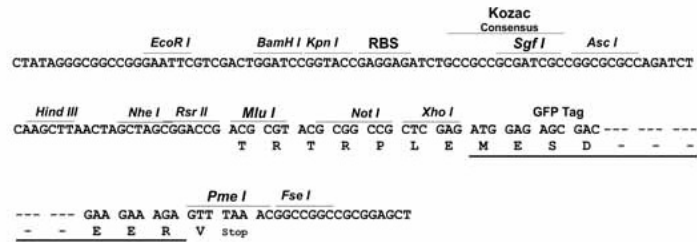
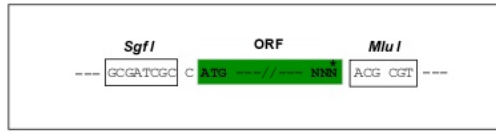
MAASRKPPRRVNVHQDFQLRNLRIIEPNEVTHSGDTGVE TDGRMPPKVTSELLRQLRQAMRNSEYVTEPI
 QAYIIPSGDAHQSEYIAPDCRRAFVSGFDGSAGTAIIIEEHAAMWTDGRYFLQAAKQMDSNWTLMKMGL
 KDTPTQEDWLVS LPEGSRVGV DPLIIP TDYWKMAKVLRSAGHHLIPVKENLVDKIWTDRPERPCKPLL
 TLGLDYTGISWKDKVADLRLKMAERNVMWFVVTALDEIAWLFNLRGSDVEHNPVFFSYAIIIGLETIMLFI
 DGDRIDAPSVKEHLLLDLGLAEYRIQVHPYK SILSELKALCADLSPREKVVWSDKASYAVSETIPKDRH
 CCMPYTPICIAKAVKNSAESEGMRRAHIKDAVALCELFNWLEKEVPKGGVTEISAADKAEEFRRQQADFV
 DLSFPTIISSTGPNGAIHYADGTTDVTRTMHFGTPTAYEKECFYV LKGHIAVSAAVFPTGTGKHL LDSF
 ARSALWDSGLDYLHGTGHVGSFLNVHEGPCGISYKTF SDEPLEAGMIVTDEPGYEDGAFGIRIENVVL
 VVPVKTKYNFNRGSLTFEPLTLVPIQTKMIDVDSLTDKECDWLN NYHLTCRDVIGKELQKQGRQEAL EW
 LIRETQPI SKQH

TRTRPLE - GFP Tag - V

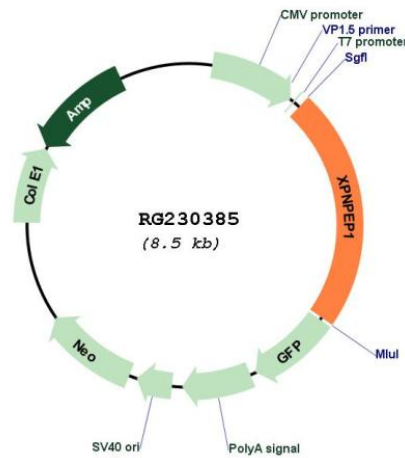
Restriction Sites: SgfI-MluI

Cloning Scheme:

Cloning sites used for ORF Shuttling:



Plasmid Map:



ACCN: NM_001167604

ORF Size: 1926 bp

| | |
|-------------------------------|---|
| OTI Disclaimer: | The molecular sequence of this clone aligns with the gene accession number as a point of reference only. However, individual transcript sequences of the same gene can differ through naturally occurring variations (e.g. polymorphisms), each with its own valid existence. This clone is substantially in agreement with the reference, but a complete review of all prevailing variants is recommended prior to use. More info |
| OTI Annotation: | This clone was engineered to express the complete ORF with an expression tag. Expression varies depending on the nature of the gene. |
| Components: | The ORF clone is ion-exchange column purified and shipped in a 2D barcoded Matrix tube containing 10ug of transfection-ready, dried plasmid DNA (reconstitute with 100 ul of water). |
| Reconstitution Method: | <ol style="list-style-type: none">1. Centrifuge at 5,000xg for 5min.2. Carefully open the tube and add 100ul of sterile water to dissolve the DNA.3. Close the tube and incubate for 10 minutes at room temperature.4. Briefly vortex the tube and then do a quick spin (less than 5000xg) to concentrate the liquid at the bottom.5. Store the suspended plasmid at -20°C. The DNA is stable for at least one year from date of shipping when stored at -20°C. |
| RefSeq: | NM_001167604.1 , NP_001161076.1 |
| RefSeq Size: | 2485 bp |
| RefSeq ORF: | 1929 bp |
| Locus ID: | 7511 |
| UniProt ID: | Q9NQW7 |
| Cytogenetics: | 10q25.1 |
| Protein Families: | Druggable Genome, Protease |
| Gene Summary: | This gene encodes the cytosolic form of a metalloaminopeptidase that catalyzes the cleavage of the N-terminal amino acid adjacent to a proline residue. The gene product may play a role in degradation and maturation of tachykinins, neuropeptides, and peptide hormones. Alternative splicing results in multiple transcript variants.[provided by RefSeq, Nov 2009] |