

Product datasheet for **RG230383**

ZNF182 (NM_001178099) Human Tagged ORF Clone

Product data:

Product Type:	Expression Plasmids
Product Name:	ZNF182 (NM_001178099) Human Tagged ORF Clone
Tag:	TurboGFP
Symbol:	ZNF182
Synonyms:	HHZ150; KOX14; Zfp182; ZNF21
Mammalian Cell Selection:	Neomycin
Vector:	pCMV6-AC-GFP (PS100010)
E. coli Selection:	Ampicillin (100 ug/mL)



[View online »](#)

ORF Nucleotide
Sequence:

>RG230383 ORF sequence, codon optimized.
Due to the complexity of NM_001178099, the ORF clone is codon optimized for mammalian Expression.
The nucleotide sequence differs from the reference sequence, yet the amino acid sequence remains identical.

Red=Cloning site Blue=ORF Green=Tags(s)

TTTTGTAATACGACTCACTATAGGGCGGCCGGAATTCGTCGACTGGATCCGGTACCGAGGAGATCTGCC
GCCGCGATCGCC

ATGACCCCGCCTCTGCCTCCGGCGAGGATTCTGGCTCCTTTTATAGCTGGCAAAGGCCAAAGCGGGAGC
AGGGACTTGTACTTTTCGAGGATGTTGCGGTCGATTTCACTCAGGAGGAGTGGCAGTACCTGAACCCCCC
CCAGAGAACTCTTTATAGGGATGTGATGCTTGAGACATACTCCAATCTGGTCTTTGTAGGACAGCAGGTC
ACCAAGCCGAACCTGATCCTTAAATTGGAAGTGGAGGAGTGCCCGCCGAGGGTAAAATTCCTTTTGGG
ACTTTCCAGAAGTTTGCCAAGTGGACGAGCAGATTGAGAGACAGCACAGGACGATCAGGACAAGTGCTCT
CCTGATGCAGGTCGGATTCTCAGACAAAAAACAATCATCACGAAGAGCGCACGCGACTGTCACGAATTT
GGAAACATTCTGCACCTGAGTACCAACCTGGTCGCATCCATCCAGCGGCCGACAAGCATGAATCCTTTG
GGAATAATATGGTTGACAATTTGGACCTCTTTCCAGGTCAAGTGCAGAAAAACAATATGACAACGGGTG
CGCAAGCTGTTCTTCCATACGGAGTATGAGAAGCAACCCGGGGATGAAGCCTTATGGTTACAAGGAG
TGTGAAAAGGGATTGAGGCGGAAGAAGGGGCTCTCACTGCACCAGAGAATTAAGAACGGCGAAAAACCAT
TTGAGTGTACCGCTTCCGCAAAAACTTTCTCTAAGAAAAGTCATCTGATAGTGCCTGGAGAACTCACAC
CGGAGAAAAACCGTTCCGCTGCACCGAGTGTGGCAAGGCGTTCTCTCAGAAATCCCAGTTGATCATACAT
CTCCGCACCCATACCGGCGAACGCCCTTTCGAATGTCCGAGTGCGGTAAGGCTTTCCGCGAGAAATCCA
CTGTCATCATTATTATCGGACACATACCGCGAGAAACCATATGAATGTAAACGAATGTGAAAAGGCCTT
TACACAGAAAAGTAATCTCATCGTGCACCAAGACCCACACTGGGGAAAAAACTTACGAGTGTACGAAA
TGTGGGGAGTCATTTATTCAGAAGCTCGACTTGATTATACATCATAGTACTCACACTGGGAAAAAGCCGC
ACGAGTGAATGAATGTAAGAAAACCTTCAGCGATAAATCAACTCTGATCATTATCAGCGGACACACAC
CGGCGAGAAGCCACACAAGTGCACAGAATGCGGCAAGAGCTTTAACGAAAAAAGTACACTGATTGTTTAT
CAAAGAACACACACCGGAGAAAAACCTATGAGTGTGACGTGTGCGGAAAAACATTCACACAGAAGTCCA
ATCTTGGCGTGCATCAGAGGACACATAGCGGCGAGAAACCTTTTGAATGTAAAGTGTGAAAAGGCCTT
TAGCCAGAAGAGCTATCTTATGCTCCATCAGCGCGCCACACGGGTGAGAAACCATACGAGTGAATGAA
TGTGAGAAAAGCTTTTAGTCAGAAGAGCTACTTGATCATTATCAGAGAACGCATACAGAAGAGAAGCCAT
ACAAGTGAACGAGTGTGGTAAGGCTTTTCAGAGAGAAGAGCAAATTTATCCATCAGCGAATTCACAC
AGGGGAGAAAACCTATGAATGCCAGTCTGTTGGAAAAGCATTTTCACAGAAATCTCAGCTTATTATTCAC
CAGAGAACCCATACAGGCGAGAAACCATATGCCTGTACAGAATGCGGCAAGGCTTCCGCGAGAAGTCCA
CGTTCACCGTACACCAGAGAACTCATACAGGCGAAAAACCTATAAATGCACCGAATGCGGGAAGGCTTT
TACACAGAAGTCAAACCTCATAGTGCACCAAGGACGCATGCCGGAAGAAGGCGCACGGCGGGGACAT
ACCCGAAAAGAGTAAGTTCATGGCTCAC

ACGCGTACGCGGCCGCTCGAG - GFP Tag - GTTTAA

Protein Sequence: >RG230383 representing NM_001178099
 Red=Cloning site Green=Tags(s)

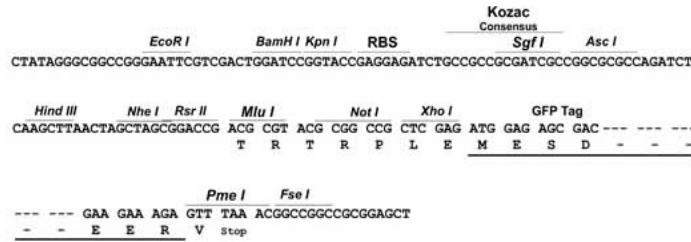
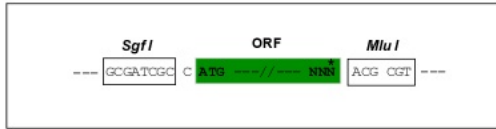
MTPASASGEDSGSFYSWQKAKREQGLVTFEDVAVDFTQEEWQYLNPPQRTLRYRDVMLETYSNLVFGQQV
 TKPNLILKLEVEECAPEGKIPFWNFPEVCQVDEQIERQHDDQDKCLLMQVGFSDKKTIIITKSARDCHEF
 GNILHLSTNLVASIQRPDKHESFGNNMVDNLDLFSRSSAENKYDNGCAKLFHTEYEKTNPGMKPYGYKE
 CGKGLRRKKGLSLHQRIKNGEKPFECTACRKTFSKSHLIVHWRHTHTGEKPFGCTECGKAFSQKSLIIH
 LRTHHTGERPFECPECGKAFREKSTVIIHYRHTHTGEKPYECNECGKAFSTQKSNLIVHQKTHHTGEKTYE
 CGESFIQKLDLIIHSTHTGKPKHECNECKTFSKSTLIIHQRTHTGEKPHKCTECGKSFNEKSTLIVH
 QRTHHTGEKPYECDVCGKTFSTQKSNLGVHQRTHSGEKPFECNECEKAFSQKSYLMLHQRGHTGEKPYECNE
 CEKAFSQKSYLIIHQRTHTTEKPYKNECGKAFREKSKLIIHQRIHTGEKPYECPVCWKAFSQKSLIIH
 QRTHHTGEKPYACTECGKAFREKSTFTVHQRTHTGEKPYKTECGKAFSTQKSNLIVHQRTHAGKKAHGRGH
 TRKSKFMAH

TRTRPLE - GFP Tag - V

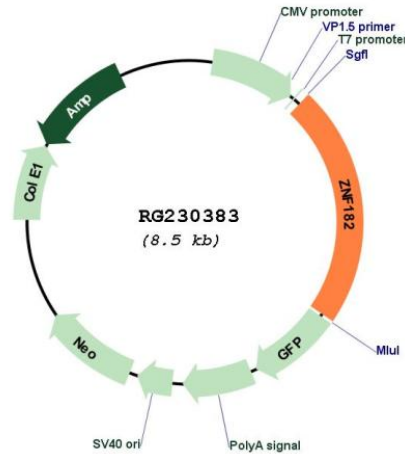
Restriction Sites: SgfI-MluI

Cloning Scheme:

Cloning sites used for ORF Shuttling:



Plasmid Map:



ACCN: NM_001178099

ORF Size: 1917 bp

OTI Disclaimer: The molecular sequence of this clone aligns with the gene accession number as a point of reference only. However, individual transcript sequences of the same gene can differ through naturally occurring variations (e.g. polymorphisms), each with its own valid existence. This clone is substantially in agreement with the reference, but a complete review of all prevailing variants is recommended prior to use. [More info](#)

OTI Annotation: This clone was engineered to express the complete ORF with an expression tag. Expression varies depending on the nature of the gene.

Components: The ORF clone is ion-exchange column purified and shipped in a 2D barcoded Matrix tube containing 10ug of transfection-ready, dried plasmid DNA (reconstitute with 100 ul of water).

Reconstitution Method:

1. Centrifuge at 5,000xg for 5min.
2. Carefully open the tube and add 100ul of sterile water to dissolve the DNA.
3. Close the tube and incubate for 10 minutes at room temperature.
4. Briefly vortex the tube and then do a quick spin (less than 5000xg) to concentrate the liquid at the bottom.
5. Store the suspended plasmid at -20°C. The DNA is stable for at least one year from date of shipping when stored at -20°C.

RefSeq: [NM_001178099.1](#), [NP_001171570.1](#)

RefSeq Size: 3669 bp

RefSeq ORF: 1920 bp

Locus ID: 7569

UniProt ID: [P17025](#)

Cytogenetics: Xp11.23

Gene Summary: Zinc-finger proteins bind nucleic acids and play important roles in various cellular functions, including cell proliferation, differentiation, and apoptosis. This gene encodes a zinc finger protein, and belongs to the krueppel C2H2-type zinc-finger protein family. It may be involved in transcriptional regulation. Multiple alternatively spliced transcript variants encoding different isoforms have been identified. [provided by RefSeq, May 2010]