

Product datasheet for **RG230371**

HDX (NM_001177478) Human Tagged ORF Clone

Product data:

Product Type:	Expression Plasmids
Product Name:	HDX (NM_001177478) Human Tagged ORF Clone
Tag:	TurboGFP
Symbol:	HDX
Synonyms:	CXorf43; D030011N01Rik
Mammalian Cell Selection:	Neomycin
Vector:	pCMV6-AC-GFP (PS100010)
E. coli Selection:	Ampicillin (100 ug/mL)



[View online »](#)

ORF Nucleotide Sequence:

>RG230371 representing NM_001177478
 Red=Cloning site Blue=ORF Green=Tags(s)

TTTTGTAATACGACTCACTATAGGGCGGCCGGAATTCGTCGACTGGATCCGGTACCGAGGAGATCTGCC
 GCC**CGGATCGCC**

ATGAATCTACGTTCTGTATTTACTGTAGAACAAACAAAGGATTTTACAGCGTTATTATGAAAATGGAATGA
 CAAATCAAAGTAAAAATTGCTTTTACGCTCATATTACAGTGTGCACAGGAGACTAAGCTGGACTTCAGTGT
 AGTCAGGACGTGGGTTGGCAATAAGAGAAGAAAGATGAGTAGTAAGAACTCTGAATCTGGAACAGCAACA
 ACAGGAACCTCTTTGTCAGCTCCAGACATCACAGTCAGAAATGTGGTTAATTGCTCGACCCTCAAGCC
 AGCAGTCTTCTGGACATCTGCCAATAATGATGTCATTGTAACCTGGTATATACAGTCCAGCCAGTTCATC
 AAGTAGGCAAGGAACAAACAAACATACAGACACACAAATTACAGAAGCACATAAAATCCCTATTCAGAAA
 ACAGCCACTAAAAATGATACTGAGTTTCAGTTACACATTCCTGTCCAAAGACAAGTAGCACACTGTAAAA
 ATGCTTCCCTACTCCTAGGTGAAAAACAATTATTTGTCAAGACAGACAAGTGTCTAAATGCTGGAAA
 CTCAGTATTCAATCACGCAAAGAAAAACTATGGAACTCTTCAGTACAAGCTTCTGAAATGACAGTACCT
 CAAAAGCCTTCTGTGTGCCACCGACCTTGTAAAATTGAACCAGTTGGGATTCAAAGGTATATAAGCCTG
 AACACACAGGCCAGCATTACATAAATTATGTGGGCAAAAAGCCAACCTATTAGAGACCCCTTACTGTAGAAC
 ACAAACCTTGAAATCCGTGAAGTGTTTTCATTGGCAGTTAGCGATTACCCCCAGAGAATTCTGGGAGGA
 AATGCCCCACAGAAGCCTAGCTCAGCAGAAGGAAATTGTTTGTCCATTGCAATGGAGACTGGAGATGCTG
 AGGATGAATATGCCAGAGAGGAAGAGCTGGCATCGATGAGAGCACAGATACCAAGCTATTCGAGATTTTA
 TGAAAGTGGCAGTTCCCTTCGAGCTGAGAACAAAGTACAACCTTGCCCGGACCAGGAAGAAATATGCCA
 AATTCACAAATGGTGAATATTAGAGATATGTCAGACAATGTACTGTATCAAAACAGAAACTACCATTTGA
 CACCACGGACCTCATTACATACAGCATCTAGTACAATGTACAGTAATACCAATCCATTACGGAGTAATTT
 TTCTCCTCATTTTGCATCATCAAACCAATTGAGATTATCACAAAACCAAAAACAATTACCAGATTTACGGA
 AACCTTACTGTGCCTTGATTACAGGGTGTCTAGAAAAAGAGCACTACAGGACCGCACTCAGTTCAGTG
 ACCGAGACTTAGCCACCCTTAAGAAGTATTGGGACAATGGCATGACCAGCCTGGGCTCTGTTTGTAGAGA
 GAAAATTGAAGCTGTGGCAACTGAATTAATGTTGACTGTGAAATAGTTCGGACTTGATTGGGAATCGA
 AGAAGGAAATATCGTTAATGGGGATTGAAGTTCACCTCCAAGAGGAGGCCCTGCTGATTTCTCTGAGC
 AGCCTGAGTCTGGTTCTTTATCTGCACTCACACCAGGAGAGGAAGCTGGGCTGAAGTAGGAGAGGATAA
 TGACAGAAATGATGAAGTATCCATCTGTTGTCTGAAGGAAGCTCTCAAGAAGAGCCCAATGAAGTTGTT
 CCGAATGATGCAAGGGCTCATAAGGAAGAGGACCACCATGCAGTAACCACAGATAATGTGAAAATAGAAA
 TTATTGATGATGAAGAAAGTACATGATAAGTAATTCTGAAGTAGAACAAGTAAACTCTTTCTTGATTA
 TAAGAATGAAGAAGTCAAATTCATTGAAAATGAGCTCGAGATTCAAAAAGCAAAAATACTTTAAACTTCAG
 ACTTTTGTAGAACTTGATATTAGCAATGAAAGCTGATGATAAGGAACAACAGCAGGCACTGCTGTGAG
 ATTTACCTCCTGAATTAGAGGAAATGGATTTCAATCATGCCTCACTGGAGCCTGATGATACCTCATTGAG
 TGTATCTTCTTTGTCAGAGAAAAATGTCTCAGAAAAGTTTG

ACGCGTACGCGGCCGCTCGAG - GFP Tag - GTTTAA

Protein Sequence: >RG230371 representing NM_001177478
 Red=Cloning site Green=Tags(s)

MNLRVFTVEQQRILQRYYENGMTNQSKNCFQLILQCAQETKLD FSVVRTWVGNKRRKMSSKNSESGTAT
 TGTSL SAPDITVRNVVNIARPSSQQSSWTSANNDVIVTGIYSPASSSSRQGTNKHTDTQITEAHKIPIQK
 TATKNDTEFQLHIPVQRQVAHCKNASLLLGKTIILSRQTSVLNAGNSVFNHAKKNYGNSSVQASEMTPV
 QKPSVCHRPCKIEPVGIQRSYKPEHTGPALHNLCGQKPTIRDPYCRTQNLEIREVFLAVSDYPQRILGG
 NAPQKPSSAEGNCLSIAMETGDAEYAREEELASMRAQIPYSYRFYESGSSLRAENQSTTLPGPGRNMP
 NSQMVNIRDMSDNVLYQNRNYHLTPRTSLHTASSTMYSNTNPLRSNFSPHFASSNQLRLSQNQNNYQISG
 NLTVPWITGCSRKRALQDRTOFSDRDLATLKKYWDNGMTSLG SVCREKIEAVATELNVDCEIVRTWIGNR
 RRKYRLMGIEVPPPRGGPADFSEQPESGLSALTPGEEAGPEVGEDNDRNDEVSICLSEGSSQEEPNEVV
 PNDARAHKEEDHHA VTTDNVKIEIIDDEESDMISNSEVEQVNSFLDYKNEEVKFIENELEIQKQYFKLQ
 TFVRSILAMKADDKEQQQALLSDLPPELEEMDFNHASLEPDDTSFSVSSLSEKNVSESL

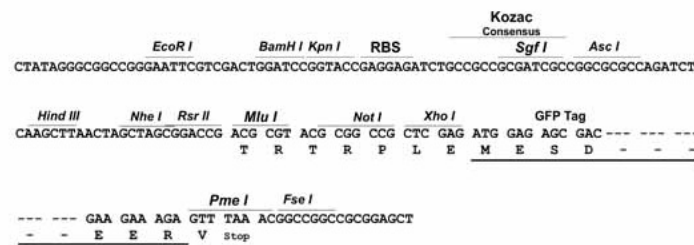
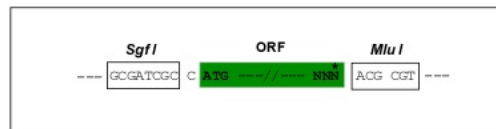
TRTRPLE - GFP Tag - V

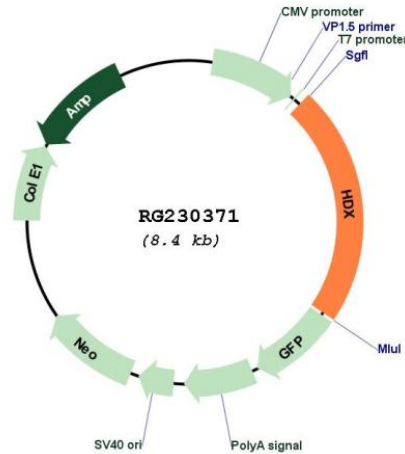
Restriction Sites:

SgfI-MluI

Cloning Scheme:

Cloning sites used for ORF Shuttling:



Plasmid Map:


ACCN: NM_001177478

ORF Size: 2073 bp

OTI Disclaimer: The molecular sequence of this clone aligns with the gene accession number as a point of reference only. However, individual transcript sequences of the same gene can differ through naturally occurring variations (e.g. polymorphisms), each with its own valid existence. This clone is substantially in agreement with the reference, but a complete review of all prevailing variants is recommended prior to use. [More info](#)

OTI Annotation: This clone was engineered to express the complete ORF with an expression tag. Expression varies depending on the nature of the gene.

Components: The ORF clone is ion-exchange column purified and shipped in a 2D barcoded Matrix tube containing 10ug of transfection-ready, dried plasmid DNA (reconstitute with 100 ul of water).

Reconstitution Method:

1. Centrifuge at 5,000xg for 5min.
2. Carefully open the tube and add 100ul of sterile water to dissolve the DNA.
3. Close the tube and incubate for 10 minutes at room temperature.
4. Briefly vortex the tube and then do a quick spin (less than 5000xg) to concentrate the liquid at the bottom.
5. Store the suspended plasmid at -20°C. The DNA is stable for at least one year from date of shipping when stored at -20°C.

RefSeq: [NM_001177478.1](#), [NP_001170949.1](#)

RefSeq Size: 6188 bp

RefSeq ORF: 1899 bp
Locus ID: 139324
UniProt ID: [Q7Z353](#)
Cytogenetics: Xq21.1
Protein Families: Transcription Factors