

Product datasheet for **RG230365**

ZNF555 (NM_001172775) Human Tagged ORF Clone

Product data:

Product Type:	Expression Plasmids
Product Name:	ZNF555 (NM_001172775) Human Tagged ORF Clone
Tag:	TurboGFP
Symbol:	ZNF555
Mammalian Cell Selection:	Neomycin
Vector:	pCMV6-AC-GFP (PS100010)
E. coli Selection:	Ampicillin (100 ug/mL)



[View online »](#)

ORF Nucleotide Sequence:

>RG230365 representing NM_001172775
 Red=Cloning site Blue=ORF Green=Tags(s)

TTTTGTAATACGACTCACTATAGGGCGGCCGGAATTCGTCGACTGGATCCGGTACCGAGGAGATCTGCC
 GCC**CGCATCGCC**

ATGGACTCAGTGGTCTTTGAGGATGTGGCTGTGGACTTACCCTGGAGGAGTGGCTTTGCTGGATTCTG
 CTCAGAGGGACCTCTACAGAGATGTGATGCTGGAGACCTTTCAGAACCTGGCCTCAGTAGATGATGAAAC
 TCAATTTAAGGCCAGTGGTCTAGTTTCTCAGCAGGATATTTATGGAGAGAAAATACCCAAGGAATCTAAA
 ATAGCCACGTTACCAGAAATGTTTCTGGGCCTCTGTTTTAGGAAAAATTTGGGACAGTCTTAGCATCG
 AAGATCAAACCACAAACCAGGGGAGAAATCTCAGAAATCATGGTTGGAGAGACTCTGTAAAGTAAATGA
 TCAATGTGGAGAAGCCCTCAGCCAGATTCCACATCTTAATCTGTACAAGAAAATTCACCTGGAGTAAAA
 CAGTATGAATACAACACGTACGGAAAAGTCTTCATGCATCGCCGCACATCCCTCAAGAGTCCCATCACAG
 TTCACACTGGACACAAACCATATCAGTCCAGGAATGTGGGCAGGCCCTACAGTTGTCTTACACCTAAG
 AATGCATGTGAGAACCACAATGGAGAGAGACCCTATGTGTGTAATTTATGTGGGAAAACCTTTCCTCGT
 ACTTCCCTCCCTCAATCGGCATGTAAAGGATTCACACTGCTGAGAAAACCTACGAATGTAAGCAATGTGGGA
 AAGCCTTTATTGACTTCTCAAGTCTTACTAGTCATCTCAGAAGTACACCCGGAGAGAAGCCATATAAGTG
 TAAGGAATGTGGGAAAGCTTTCAGTTATTCCTCAACGTTTCGAAGACACACAATAACACACACTGGCGAG
 AAGCCATATAAATGTAAGGAATGTGCGGAAGCCTTTAGTTATTCCTCAACTTTTCGAAGACATATGATTT
 CACACACTGGAGAGAAGCCACATAAATGTAAGAATGTGGGGAGGCCCTCAGTTATTTCTCGGCTTTTCG
 AAGACACATGATAACACACACTGGAGAGAAACCCTACGAATGCAAACAATGTGGGAAAACCTTCATTTAT
 CTCCAGTCTTTTCGAAGACATGAAAGGATTCACACTGGAGAGAAACCCTACGAATGCAAACAGTGTGGGA
 AGACTTCATTTATCCCCAGTCCCTTTCGAAGACATGAAAGGACTCATGGTGGAGAGAAACCCTATGAATG
 CAACCAAGTGGGAAAGCATTTCAGTCCACCCTCCCTCTTTCGAGGACACATGAGGGTGCACACTGGAGAG
 AAACCCTATGAGTGCAAGCAATGTGGGAAAACCTTCAATTGGCCCATATCTTTACGAAAACATATGAGAA
 CACATACTAGAGAGAAACCCTATGAATGTAAGCAGTGTGGGAAAGCCTTCAGCTTGTCTGCTTGTCTTCG
 AGAACATGTGAGAATGCACCCTGAAGACAAATCCTATGAATGCAAGCTATGTGGGAAAGCTTTCATTG
 CACATATCCTTACAAAACATATGAGAAGACATACCGCAGAGAAACTCTATAAATGCAAGCAGTGTGGGA
 AAGCTTTCAGTTGGCCTGAACTTTTGAACAACATGTGAGAACGCACACTGTAGAGAAGCCCTATGAATG
 TAAGGAATGTGGGAAAGTCTTCAAATGGCCATCATCTTTACCAATACATATGAGACTGCACACTGGAGAG
 AAACCTTATCAATGTAAGCATTGTGGGAAAGCATTCAATTGTTCTCATCCTTAAGCGACATGTGAGAA
 TACACACTACAGAAAACAGTATAAGTGTAAATGTAGGACATCCTCCTGCAAATGAATTCATGTGCAGTGC
 TTCAGAAAAGTCACACCAGGAGAGATCTGATCAAAGTTGTAATATGGTGTTCCTTTA

ACGCGTACGCGGCCGCTCGAG – GFP Tag – GTTTAA

Protein Sequence:

>RG230365 representing NM_001172775
 Red=Cloning site Green=Tags(s)

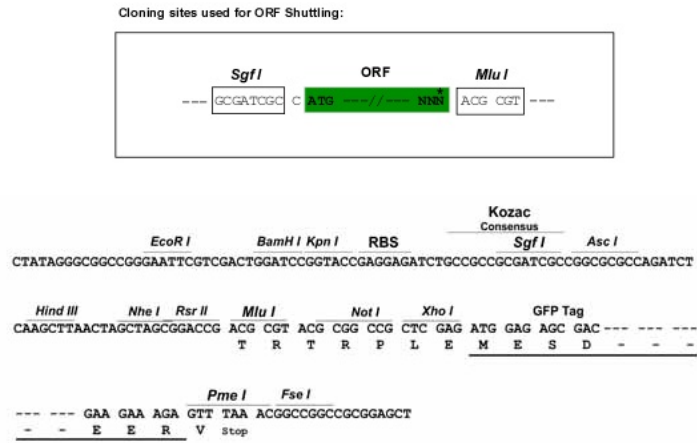
MDSVVFEDVAVDFLEEWALLDSAQRDLYRDVMLETFQNLASVDDDETQFKASGSVSQQDIYGEKIPKESK
 IATFTRNVSWASVLGKIWDSLSEEDQTTNQGRNLRNHGLERLCESENDQCGEALSQIPHLNLYKKIPPGVK
 QYEYNTYQKVFMRRTSLKSPITVHTGHKPYQCQECQAYSCRSHLRMHVTRHNGERPYYCKLCKGTFPR
 TSSLNRHVRHTAEKTYECKQCGKAFIDFSSLTSHLRSHTEKPYKCKEKGKAFYSYSSTFRRHITHTGE
 KPYKCKEAEAFYSYSSTFRRHISHTGEKPHKCKEAGEAFYSYSAFRRHITHTGEKPYECKQCGKTFIY
 LQSFRRHERIHTGEKPYECKQCGKTFIYQSFRRHERTHGGEKPYECNQCCKAFSHPSSFRGHMRVHTGE
 KPYECKQCGKTFNWPISLRKHMRHTHTREKPYECKQCGKAFSLSACFREHVRMHPEDKSYECKLCKGAFYC
 HISLQKHMRRHTAEKLYCKQCGKAFSWPELLQQHVTRHTVEKPYECKEKGKVFKWPSLPIHMLRHTGE
 KPYQCKHCGKAFNCSSSLRRHVRHTTEKQYKCNVGHPPANEFMCSASEKSHQERDLIKVNVNMLPL

TRTRPLE – GFP Tag – V

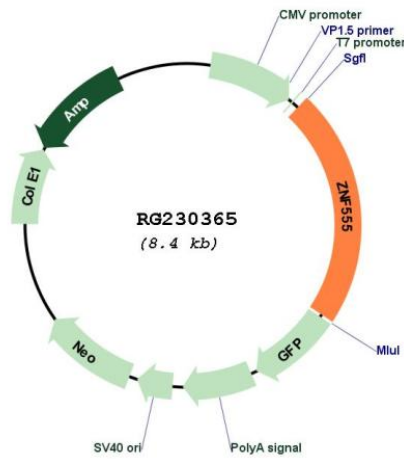
Restriction Sites:

Sgfl-MluI

Cloning Scheme:



Plasmid Map:



ACCN: NM_001172775

ORF Size: 1881 bp

OTI Disclaimer:	The molecular sequence of this clone aligns with the gene accession number as a point of reference only. However, individual transcript sequences of the same gene can differ through naturally occurring variations (e.g. polymorphisms), each with its own valid existence. This clone is substantially in agreement with the reference, but a complete review of all prevailing variants is recommended prior to use. More info
OTI Annotation:	This clone was engineered to express the complete ORF with an expression tag. Expression varies depending on the nature of the gene.
Components:	The ORF clone is ion-exchange column purified and shipped in a 2D barcoded Matrix tube containing 10ug of transfection-ready, dried plasmid DNA (reconstitute with 100 ul of water).
Reconstitution Method:	<ol style="list-style-type: none">1. Centrifuge at 5,000xg for 5min.2. Carefully open the tube and add 100ul of sterile water to dissolve the DNA.3. Close the tube and incubate for 10 minutes at room temperature.4. Briefly vortex the tube and then do a quick spin (less than 5000xg) to concentrate the liquid at the bottom.5. Store the suspended plasmid at -20°C. The DNA is stable for at least one year from date of shipping when stored at -20°C.
RefSeq:	NM_001172775.2
RefSeq Size:	8544 bp
RefSeq ORF:	1884 bp
Locus ID:	148254
UniProt ID:	Q8NEP9
Cytogenetics:	19p13.3
Protein Families:	Transcription Factors
Gene Summary:	May be involved in transcriptional regulation.[UniProtKB/Swiss-Prot Function]