

Product datasheet for **RG230327**

SCMH1 (NM_001172221) Human Tagged ORF Clone

Product data:

Product Type:	Expression Plasmids
Product Name:	SCMH1 (NM_001172221) Human Tagged ORF Clone
Tag:	TurboGFP
Symbol:	SCMH1
Synonyms:	Scml3
Mammalian Cell Selection:	Neomycin
Vector:	pCMV6-AC-GFP (PS100010)
E. coli Selection:	Ampicillin (100 ug/mL)



[View online »](#)

ORF Nucleotide Sequence:

>RG230327 representing NM_001172221
 Red=Cloning site Blue=ORF Green=Tags(s)

TTTTGTAATACGACTCACTATAGGGCGGCCGGAATTCGTCGACTGGATCCGGTACCGAGGAGATCTGCC
 GCC**CGGATCGCC**

ATGAAATTGGAAGCACAGGACCCAGAACACCACATCCACCTGTATTGCCACAGTAGTTGGACTGACAG
 GTGCCCGCTTCGCCTGCGCCTTGATGGGAGCGACAACAAAAATGACTTCTGGCGGCTGGTTGACTCAGC
 TGAAATCCAGCCTATTGGAACTGTGAAAAGAATGGGGTATGCTACAGCCACCTCTGGATTTCCGGCTG
 AATGCGTCTTCTGGCCCATGTTCTTTTGAAGACGCTAAATGGAGCAGAGATGGCTCCCATCAGGATTT
 TCCACAAGGAGCCACCATCGCCTCCCACAACCTCTTCAAATGGGAATGAAGCTAGAAGCTGTGGACAG
 GAAGAACCCTCATTTATTTGCCAGCCACTATTGGGGAGGTTCCGGGCTCAGAGGTGCTTGTCACTTTT
 GATGGGTGGCGAGGGCCTTTGACTACTGGTCCGCTTCGACTCCCGAGACATCTCCCTGTGGGCTGGT
 GTTCTTGACTGGAGACAACCTGCAGCCTCCTGGCACAAAGTTGTATTCAAAGAATCCCTATCTCTGC
 CTCGATGTGAATACTGAGAAGCCAGCATCCACAGCAGCACAAAAGTGTCTTGAACATCAACCAGGG
 CAGAGGGGGCGTAAACCAGGAAAGAAGCGGGGCCGACACCCAAGACCCTAATTTCCCATCCCATCTCTG
 CCCCATCCAAGACAGCTGAACCTTTGAAATTTCCAAAGAAGAGAGGTCCCAAACCTGGCAGCAAGAGGAA
 ACCTCGGACTTTGCTGAACCCACCACCTGCCTCACCAACAACCAGCACTCCTGAACCGGATACCAGCACT
 GTACCCAGGATGCTGCCACCATCCCCAGCTCAGCCATGCAGGCCCAACAGTTTGTATCTACTTGAACA
 AGAATGGCAGCACAGGCCCACTTAGATAAGAAGAAGGTCCAGCAACTCCCTGACCATTTTGGACCAGC
 CCGTGCCTCTGTGGTGTGCAGCAGGCTGTCCAGGCCTGTATCGACTGTGCTTATCACCAGAAAACCGTC
 TTCAGTTCCTCAAGCAAGGCCATGGTGGTGAGGTTATCTCAGCCGTGTTTGACCGGGAACAGCATACCC
 TCAACCTCCCAGCAGTCAACAGCATCACCTACGTCCTCCGTTCTCGAGAAAAGTGTCCACAACCTTCG
 TAGTGACAATCTGTTTGGCAACCAGCCCTTACACAGACTCACTTGTCACTCACTGCCATAGAGTACAGC
 CACAGCCACGACAGGTACCTACCAGGTGAAACCTTTGCTCTGGGAATAGTCTGGCCCGCTCCTTGAAC
 CACACTCAGACTCAATGGACTCTGCCTCAAATCCCACCAACCTTGTGAGCACTCCCAAAGGCACCGGCC
 CTTGCTTTCATCTGTGGCCTCCACCAAGCACTGCCTCAGCTGTGCGCAGGCTATGCTCCAGGGGAGTG
 TAAAAGGATCAAATGAAAGAAGGGATATGGAATCATTTTGGAACTAAATCGTTCCCAAGGGTCCGACC
 GATACCTGGAGAGCCCGATGCCTCTCGACTGAGTGGCCGGGACCCCTCCTCATGGACAGTCGAGGATGT
 GATGCAGTTTGTCCGGGAAGCTGATCCTCAGCTGGACCCACGCTGACCTGTTTCGAAACACGAGATC
 GATGGCAAGGCCCTGCTGCTGCTGCGCAGTGACATGATGATGAAGTACATGGGCCTGAAGCTGGGCCTG
 CACTCAAGCTCTCTACCACATTGACCGGCTGAAGCAGGCAAGTTC

ACGCGTACGCGGCCGCTCGAG – GFP Tag – GTTTAA

Protein Sequence:

>RG230327 representing NM_001172221
 Red=Cloning site Green=Tags(s)

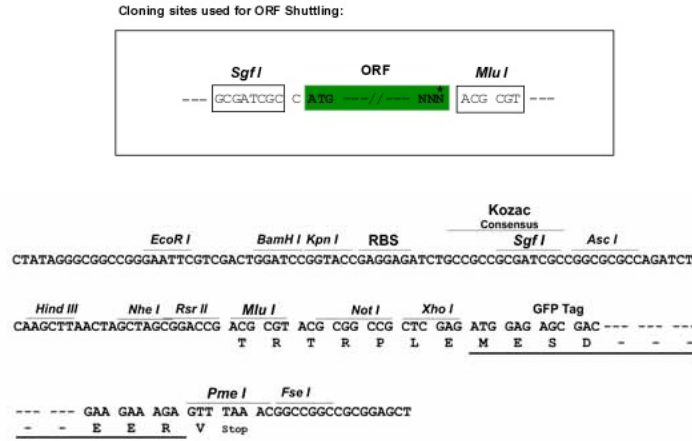
MKLEAQDPRNTTSTCIATVVGLTGARLRLRLDGSNDKNDFWRLVDSAEIQPIGNCEKNGGMLQPPLGFRL
 NASSWPMFLKTLNGAEMAPIRIFHKEPPSPSHNFFKMGMKLEAVDRKNPHFICPATIGEVRGSEVLVTF
 DGWRGAFDYWCRFDSRDIFPVGWCSLTGDNLQPPGKVVIPKNYPASDVNTEKPSIHSSTKTVLEHQPG
 QRGRKPGKKRGRTPKTLISHPISAPSKTAEPLKFPKRGPKPGSKRKPRTLLNPPASPTTSTPEPDTST
 VPQDAATIPSSAMQAPTVCIIYLNKNGSTGPHLDKKKVQQLPDHFGPARASVVLQQAVQACIDCAYHQKTV
 FSFLKQGHGGEVISAVIDREQHTLNLPVNSITYVLRFLKLNLRSDNLFNGQPFTQTHLSLTAIEYS
 HSHDRYLPGETFVLGNSLARSLEPHSDSMDASNPNTLVSTSQRHRPLLSSCGLPPSTASAVRRLLCSRGV
 LKGSNERDMESFWKLNRSFGSDRYLESRDASRLSGRDPSSWTVEDVMQFVREADPQLGPHADLFRKHEI
 DGKALLLLRSDMMMKYMLKLGPAKLKLSYHIDRLKQKGF

TRTRPLE – GFP Tag – V

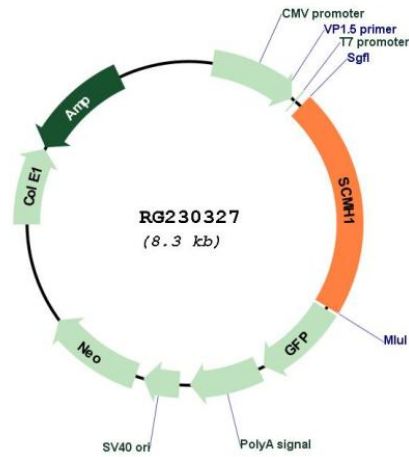
Restriction Sites:

SgfI-MluI

Cloning Scheme:



Plasmid Map:



ACCN: NM_001172221

ORF Size: 1800 bp

OTI Disclaimer:	The molecular sequence of this clone aligns with the gene accession number as a point of reference only. However, individual transcript sequences of the same gene can differ through naturally occurring variations (e.g. polymorphisms), each with its own valid existence. This clone is substantially in agreement with the reference, but a complete review of all prevailing variants is recommended prior to use. More info
OTI Annotation:	This clone was engineered to express the complete ORF with an expression tag. Expression varies depending on the nature of the gene.
Components:	The ORF clone is ion-exchange column purified and shipped in a 2D barcoded Matrix tube containing 10ug of transfection-ready, dried plasmid DNA (reconstitute with 100 ul of water).
Reconstitution Method:	<ol style="list-style-type: none">1. Centrifuge at 5,000xg for 5min.2. Carefully open the tube and add 100ul of sterile water to dissolve the DNA.3. Close the tube and incubate for 10 minutes at room temperature.4. Briefly vortex the tube and then do a quick spin (less than 5000xg) to concentrate the liquid at the bottom.5. Store the suspended plasmid at -20°C. The DNA is stable for at least one year from date of shipping when stored at -20°C.
RefSeq:	NM_001172221.1 , NP_001165692.1
RefSeq Size:	3245 bp
RefSeq ORF:	1800 bp
Locus ID:	22955
UniProt ID:	Q96GD3
Cytogenetics:	1p34.2
Protein Families:	Transcription Factors
Gene Summary:	Associates with Polycomb group (PcG) multiprotein complexes; the complex class is required to maintain the transcriptionally repressive state of some genes.[UniProtKB/Swiss-Prot Function]