

Product datasheet for **RG230324**

nephronectin (NPNT) (NM_001184691) Human Tagged ORF Clone

Product data:

Product Type:	Expression Plasmids
Product Name:	nephronectin (NPNT) (NM_001184691) Human Tagged ORF Clone
Tag:	TurboGFP
Symbol:	NPNT
Synonyms:	EGFL6L; POEM
Mammalian Cell Selection:	Neomycin
Vector:	pCMV6-AC-GFP (PS100010)
E. coli Selection:	Ampicillin (100 ug/mL)



[View online »](#)

ORF Nucleotide Sequence:

>RG230324 representing NM_001184691
 Red=Cloning site Blue=ORF Green=Tags(s)

TTTTGTAATACGACTCACTATAGGGCGGCCGGGAATTCGTCGACTGGATCCGGTACCGAGGAGATCTGCC
 GCC**CGGATCGCC**

ATGGATTTTCTCCTGGCGCTGGTGTATCCTCGCTCTACCTGCAGGGCGGCCGGAGTTTCGACGGGA
 GGTGGCCAGGCAAATAGTGTATCGATTGGCCTATGTCGTTATGGTGGGAGGATTGACTGCTGCTGGG
 CTGGGCTCGCCAGTCTTGGGGACAGTGTGAGCCTGTGTGCCAACCACGATGCAAACATGGTGAATGTATC
 GGGCAAACAAGTGAAGTGTATCCTGGTTATGCTGGAAAACTGTAATCAAGACGAGCACATCCAG
 CTCCTCTTGACCAAGGCAGTGAACAGCCTCTTTTCCAACCCCTGGATCACCAAGCCACAAGTTTGCCTTC
 AAGGGATCAATGAGTGTGGCCTGAAGCCCCGGCCCTGAAGCACAGGTGCATGAACACTTACGGCAGC
 TACAAGTCTACTGTCTCAACGGATATATGCTCATGCCGGATGGTTCTGCTCAAGTGCCTGACCTGCT
 CCATGGCAAACCTGTCAGTATGGCTGTGATGTTGTTAAAGGACAAATACGGTGCCAGTGCCATCCCTGG
 CCTGCAGCTGGCTCCTGATGGGAGGACCTGTGTAGATGTTGATGAATGTGCTACAGGAAGAGCCTCTGC
 CCTAGATTTAGGCAATGTGTCAACACTTTTGGGAGCTACATCTGCAAGTGCATAAAGGCTTCGATCTCA
 TGTATATTGGAGGCAAATATCAATGTCATGACATAGACGAATGCTCACTTGGTCAGTATCAGTGCAGCAG
 CTTTGCTCGATGTTATAACATACGTGGGTCTACAAGTGCAAATGTAAAGAAGGATACCGGGTGTGGA
 CTGACTTGTGTATATCCCAAAGTTATGATTGAACCTTCAGGTCCAATTCATGTACCAAAGGGAAATG
 GTACCATTTTAAAGGGTGACACAGGAAATAATAATTGGATTCTGATGTTGGAAGTACTTGGTGGCTCC
 GAAGACACCATATATTCCTCCTATCATTACCAACAGGCCACTTCTAAGCCAACAACAAGACCTACACCA
 AAGCCAACCAATTCTACTCCACCACCACCACCCTGCCAACAGAGCTCAGAACACCTCTACCAC
 CTACAACCCAGAAAGGCCAACCCGGACTGACAATAAGCACCAGCTGCCAGTACACCTCCAGGAGG
 GATTACAGTTGACAACAGGGTACAGACAGACCCTCAGAAACCCAGAGGAGATGTGTTCAATCCACGGCAA
 CCTTCAAATGACTTGTGTTGAAATATTTGAAATAGAAAGAGGAGTCAAGTGCAGACGATGAAGCAAAGGATG
 ATCCAGGTGTTCTGGTACACAGTTGTAATTTGACCATGGACTTTGTGGATGGATCAGGGAGAAAGACAA
 TGACTTGCAGTGGGAACCAATCAGGGACCCAGCAGGTGGACAATATCTGACAGTGTGGCAGCCAAAGCC
 CCAGGGGGAAAAGCTGCACGCTTGGTGTACTCTCGCCGCCTCATGCATTAGGGGACCTGTGCCTGT
 CATTACGGCACAAGGTGACGGGGCTGCACTCTGGCACACTCCAGGTGTTTGTGAGAAAACACGGTGCCCA
 CGGAGCAGCCCTGTGGGAAGAAATGGTGGCCATGGCTGGAGGCAAACACAGATCACCTTCCGAGGGGCT
 GACATCAAGAGCGTCGTCTTCAAAGGTGAAAAAGGCGTGGTCACTGGGGAGATTGGATTAGATGATG
 TGAGCTTGAAAAAGGCCACTGCTCTGAAGAACGC

ACGCGTACGCGGCCGCTCGAG – GFP Tag – GTTTAA

Protein Sequence:

>RG230324 representing NM_001184691
 Red=Cloning site Green=Tags(s)

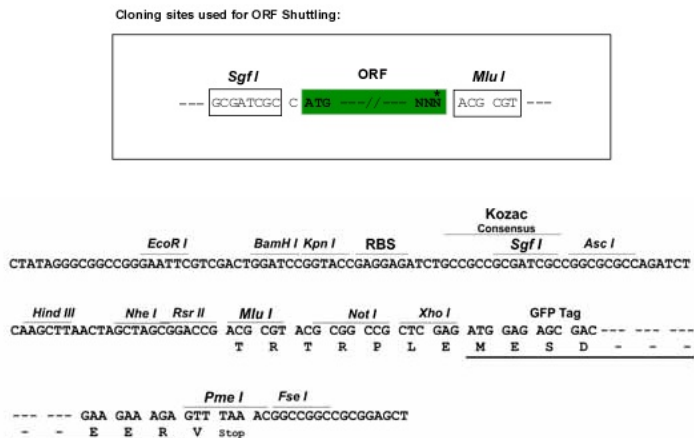
MDFLLALVLVSSLYLQAAAEFDGRWPRQIVSSIGLCRYGGRIDCCWGWARQSWGQCQPVCQPRCKHGEIC
 GPNKCKCHPGYAGKTCNQDEHIPAPLDQGEQPLFQPLDHQATSLPSRDLNECGLKPRPCKHRCMNTYGS
 YKCYCLNGYMLMPDGSCSSALTCSMANCQYGCDVVKGQIRCQCPSPGLQLAPDGRTDVDDECATGRASC
 PRFRQCVNTFGSYICKCHKGFDLMIYIGGKYQCHDIDECSLGQYQCSSFARCYNIRGSYKCKKEGYQGDG
 LTCVYIPKVMIEPSGPIHVPKNGTILKGDGNNWIPDVGSTWPPKTPYIPPIITNRPTSKPTTRPTP
 KPTPIPTPPPPPLPTLRTPLPPTTTPERTTGLTTIAPAASTPPGGITVDNRVQTDQKPRGDVFI
 PRQPSNDLFEIFEIERGVSADDEAKDDPGVLVHSCNFDHGLCGWIREKDNDLHWEPIRDPAGGQYLTVSAKA
 PGGAARLVLPGLRMLHSGDLCLSFHRKVTGLHSGTLQVVRKHGAHGAALWGRNGGHGWRQTQITLRGA
 DIKSVVFKGKRRGHTGEIGLDDVSLKKGHCSEER

TRTRPLE – GFP Tag – V

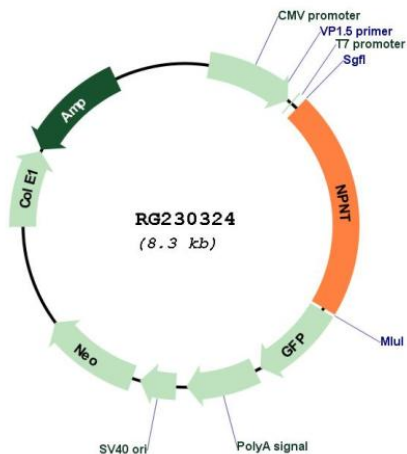
Restriction Sites:

Sgfl-MluI

Cloning Scheme:



Plasmid Map:



ACCN: NM_001184691

ORF Size: 1785 bp

OTI Disclaimer:	The molecular sequence of this clone aligns with the gene accession number as a point of reference only. However, individual transcript sequences of the same gene can differ through naturally occurring variations (e.g. polymorphisms), each with its own valid existence. This clone is substantially in agreement with the reference, but a complete review of all prevailing variants is recommended prior to use. More info
OTI Annotation:	This clone was engineered to express the complete ORF with an expression tag. Expression varies depending on the nature of the gene.
Components:	The ORF clone is ion-exchange column purified and shipped in a 2D barcoded Matrix tube containing 10ug of transfection-ready, dried plasmid DNA (reconstitute with 100 ul of water).
Reconstitution Method:	<ol style="list-style-type: none">1. Centrifuge at 5,000xg for 5min.2. Carefully open the tube and add 100ul of sterile water to dissolve the DNA.3. Close the tube and incubate for 10 minutes at room temperature.4. Briefly vortex the tube and then do a quick spin (less than 5000xg) to concentrate the liquid at the bottom.5. Store the suspended plasmid at -20°C. The DNA is stable for at least one year from date of shipping when stored at -20°C.
RefSeq:	NM_001184691.2
RefSeq Size:	4682 bp
RefSeq ORF:	1788 bp
Locus ID:	255743
UniProt ID:	Q6UXI9
Cytogenetics:	4q24
Protein Families:	Druggable Genome
Gene Summary:	Functional ligand of integrin alpha-8/beta-1 in kidney development. Regulates the expression of GDNF with integrin alpha-8/beta-1 which is essential for kidney development. May also play a role in the development and function of various tissues, regulating cell adhesion, spreading and survival through the binding of several integrins (By similarity).[UniProtKB/Swiss-Prot Function]