

Product datasheet for **RG230321**

Dynein intermediate chain 2 (DNAI2) (NM_001172810) Human Tagged ORF Clone

Product data:

Product Type:	Expression Plasmids
Product Name:	Dynein intermediate chain 2 (DNAI2) (NM_001172810) Human Tagged ORF Clone
Tag:	TurboGFP
Symbol:	DNAI2
Synonyms:	CILD9; DIC2
Mammalian Cell Selection:	Neomycin
Vector:	pCMV6-AC-GFP (PS100010)
E. coli Selection:	Ampicillin (100 ug/mL)



[View online »](#)

ORF Nucleotide Sequence:

>RG230321 representing NM_001172810
 Red=Cloning site Blue=ORF Green=Tags(s)

TTTTGTAATACGACTCACTATAGGGCGGCCGGAATTCGTCGACTGGATCCGGTACCGAGGAGATCTGCC
 GCC**CGGATCGCC**

ATGGAGATTGTGTACGTGTACGTCAAGAAGCGCAGCGAGTTCGGGAAGCAGTGCAATTTCTCGGACCGCC
 AGGCCGAGCTGAACATCGACATCATGCCAACCCCTGAGCTGGCCGAGCAGTTCGTGGAGCGGAACCCAGT
 GGACACGGGCATCCAGTCTCGATCAGCATGTCGGAACACGAGGCCAACTCAGAGCGTTTGAGATGGAG
 ACCCGGGGAGTTAACCATGTCGAGGGGGCTGGCCAAAGGACGTGAACCCCTGGAGCTGGAGCAGACCA
 TCCGTTTCCGGAAGAAAGTGGAGAAAGATGAGAACTACGTTAACGCCATCATGCAGCTCGGCTCTATCAT
 GGAGCACTGCATCAAGCAGAACAATGCCATTGACATCTATGAAGAGTATTTCAATGACGAGGAGGCCATG
 GAAGTGTGGAGGAGGCCCTTCAGCTAAAACCATCAATGTGTTTCAGGGACCCCAAGAAATCAAGAGGG
 CTGCCACACACCTCTCCTGGCACCCGATGGCAACAGGAAGTTGGCAGTGCATACTCCTGCTTGGATTT
 TCAGCGGGCACCTGTGGGCATGAGCAGCGATTACATCTGGGACCTGGAAAACCCCAACAGCCTGAA
 CTTGCTCTGAAGCCATCGTCTCCACTCGTGACGTTGGAGTTCAACCCCAAGATCCCACGTAATCCTGG
 GTGGCTGTACAATGGACAGATAGCCTGCTGGGACACCCGAAAGGGCAGCCTGGTGGCGGAGCTATCCAC
 CATTGAGTCCAGCCACCGAGACCCTGTGTATGGCACCATCTGGCTGCAGTCGAAGACGGGCACCGAGTGC
 TTCTCAGCTTCCACGGATGGGCAGGTATGTGGTGGGACATCCGAAAGATGAGCGAGCCCACTGAAGTTG
 TGATCTTGGACATCACCAAGAAGAACAGTTGGAAAATGCCTTGGGGGCCATCTCCCTGGAGTTCGAATC
 TACTTTGCCACCAAGTTCATGGTGGGGACCGAGCAGGGCATCGTCATCTCCTGCAACCGCAAGGCCAAG
 ACGTCAGCTGAAAAGATTGTGTGCACCTTCCCGGGCCATCATGGCCCATCTACGCCCTCCAGAGAAACC
 CCTTCTACCCGAAGAATTCTGACGGTTGGCGACTGGACAGCCCGCATTTGGTCTGAAGACAGCCGGGA
 ATCGTCCATCATGTGGACCAAGTACCACATGGCTTACCTCACTGATGCTGCCTGGAGCCCGTGAGGCCG
 ACCGTTTTCTTTACCACAGGATGGACGGAACCCCTGGATATCTGGGACTTCATGTTTCGAGCAGTGCATC
 CCACCCTCAGCTTGAAGGACAATGGGTGTCTCATCGCCTGCGGCTCCCAGCTGGGGACAACCACCCTGCT
 GGAGGTCTCGCCTGGGCTCTCTACCCTCCAGGGAATGAGAAGAAGTAGCCTCTTCCATGTTTGGAGCGT
 GAGACCCGGCGAGAGAAGATCCTGGAGGCCAGGCACCGGAGATGCGGCTGAAGGAGAAGGGTAAGCGG
 AGGGCAGGGATGAGGAGCAGACCGATGAGGAGCTGGCCGTAGACCTGGAGGCGTGGTCAGCAAGGCCGA
 GGAGGAGTCTTCGACATCATCTTCGAGAGCTGAAGAAGAAGGAGGCAGACGCCATAAAGCTGACGCCA
 GTCCCTCAGCAACCAAGTCCAGAAGAAGACCAGGTGGTGGAGGAGGGAGGAAGCAGCGGGGAAGAAG
 GGGATGAAGAAGTGAAGAAGACTTAGCC

ACGCGTACGCGGCCGCTCGAG – GFP Tag – GTTTAA

Protein Sequence:

>RG230321 representing NM_001172810
 Red=Cloning site Green=Tags(s)

MEIVYVYVKRSEFGKQCNFSDRQELNIDIMPNELAEQFVERNPVDTGIQCSISMSEHEANSERFEME
 TRGVNHVEGGWPKDVNPLELEQTIRFRKKVEKDENVYVNAIMQLGSIMEHCIKQNNAIIDYEEYFNDEEAM
 EVMEEDPSAKTINVFRDPQEIKAATHLSWHPDGNRKLAVAYSCLDFQRAPVGMSSDSYIWDLENPNKPE
 LALKPSSPLVTLEFPKDSHVLLGGCYNGQIACWDTRKGSVAELSTIESSHRDPVYGTIWLQSKTGTEC
 FSASTDGQVMWDIRKMSEPTVVILDIKKEQLENALGAISLEFESTLPTKFMVGTQQGIVISCNRKAK
 TSAEKIVCTFPGHHGPIYALQRNPFYKPNFLTVGDWTARIWSEDSRESSIMWTKYHMAYL TDAAWSVPRP
 TVFFTTTRMDGTLDIWDFMFEQCDPTLSLKDNGCLIACGSQLGTTTLLEVSPGLSTLQRNEKNVASSMFER
 ETRREKILEARHREMLKKEGKAEGRDEEQTDEELAVDLEALVSKAEFFDIIFAELKKKEADAIKLTP
 VPQQPSPEEDQVVEEGEEAAGEEGDEEVEEDLA

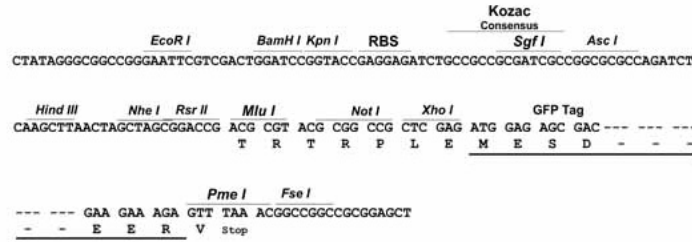
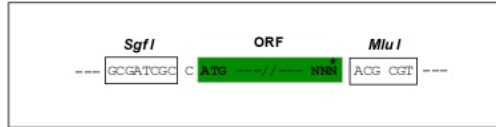
TRTRPLE – GFP Tag – V

Restriction Sites:

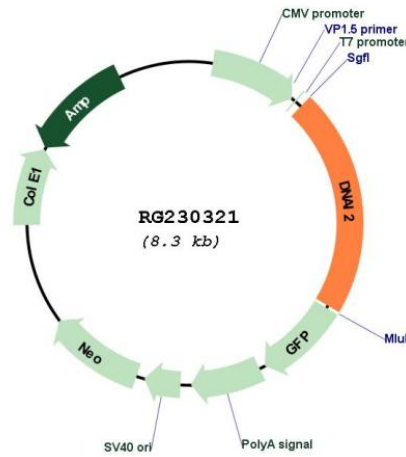
SgfI-MluI

Cloning Scheme:

Cloning sites used for ORF Shutting:



Plasmid Map:



ACCN: NM_001172810

ORF Size: 1779 bp

OTI Disclaimer:	The molecular sequence of this clone aligns with the gene accession number as a point of reference only. However, individual transcript sequences of the same gene can differ through naturally occurring variations (e.g. polymorphisms), each with its own valid existence. This clone is substantially in agreement with the reference, but a complete review of all prevailing variants is recommended prior to use. More info
OTI Annotation:	This clone was engineered to express the complete ORF with an expression tag. Expression varies depending on the nature of the gene.
Components:	The ORF clone is ion-exchange column purified and shipped in a 2D barcoded Matrix tube containing 10ug of transfection-ready, dried plasmid DNA (reconstitute with 100 ul of water).
Reconstitution Method:	<ol style="list-style-type: none">1. Centrifuge at 5,000xg for 5min.2. Carefully open the tube and add 100ul of sterile water to dissolve the DNA.3. Close the tube and incubate for 10 minutes at room temperature.4. Briefly vortex the tube and then do a quick spin (less than 5000xg) to concentrate the liquid at the bottom.5. Store the suspended plasmid at -20°C. The DNA is stable for at least one year from date of shipping when stored at -20°C.
RefSeq:	NM_001172810.3
RefSeq Size:	2255 bp
RefSeq ORF:	1782 bp
Locus ID:	64446
UniProt ID:	Q9GZS0
Cytogenetics:	17q25.1
Protein Pathways:	Huntington's disease
Gene Summary:	The protein encoded by this gene belongs to the dynein intermediate chain family, and is part of the dynein complex of respiratory cilia and sperm flagella. Mutations in this gene are associated with primary ciliary dyskinesia type 9. Alternatively spliced transcript variants encoding different isoforms have been noted for this gene. [provided by RefSeq, Mar 2010]